

Product datasheet for **RG239227**

SLC26A7 (NM_001282356) Human Tagged ORF Clone

Product data:

Product Type:	Expression Plasmids
Product Name:	SLC26A7 (NM_001282356) Human Tagged ORF Clone
Tag:	TurboGFP
Symbol:	SLC26A7
Synonyms:	SUT2
Mammalian Cell Selection:	Neomycin
Vector:	pCMV6-AC-GFP (PS100010)
E. coli Selection:	Ampicillin (100 ug/mL)



[View online »](#)

ORF Nucleotide
Sequence:

>RG239227 representing NM_001282356.
Blue=ORF Red=Cloning site Green=Tag(s)

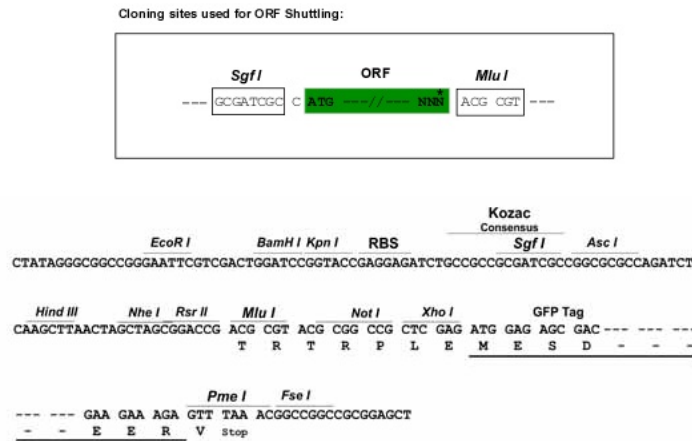
```
GCTCGTTTAGTGAACCGTCAGAATTTTGTAAACGACTCACTATAGGGCGGCCGGGAATTCGTGCGACTG
GATCCGGTACCGAGGAGATCTGCCGCCACGATCGCC
ATGACAGGAGCAAAGAGGAAAAAGAAAAGCATGCTTTGGAGCAAGATGCATACCCCCAGTGTGAAGAC
ATTATACAGTGGTGTAGAAGGCGACTGCCCATTTTGGATTGGCACCACATTACAATCTGAAAGAAAAC
TTGCTTCCAGACACTGTGTCTGGGATAATGTTGGCAGTTCAACAGGTGACCCAAGGATTGGCCTTTGCT
GTTCTCTCATCTGTGCACCCAGTGTGTTGTTTATATGGGTCTCTGTTTCTGCCATAATTTATGCCATA
TTTGAATGGGACATCATGTTGCCACAGGCACCTTGCCTTGACATCCTTAATATCAGCCAACGCCGTG
GAACGGATTGTCCCTCAGAACATGCAGAATCTCACCACACAGAGTAACACAAGCGTGCTGGGCTTATCC
GACTTTGAAATGCAAAGGATCCACGTTGCTGCAGCAGTTTCTTCTTGGGAGGTGTGATTAGGTTGGCC
ATGTTTGTGCTGCAACTGGGAGTCCACATTTGTGGTACAGAGCCTGTGATCAGCGCAATGACAAC
GGGGCTGCCACCCATGTGGTACTTCAAGTCAAAATATCTCTTGGGAATGAAAATGCCATATATATCC
GGACCCTTGGATTCTTTTATATTTATGCATATGTTTTGAAAACATCAAGTCTGTGCGACTGGAAGCA
TTGCTTTTATCCTTGCTGAGCATTGTGGTCTTGTCTTGTAAAGAGCTGAATGAACAGTTTAAAGG
AAAATTAAGTTGTTCTTCTGTAGATTTAGTTTTGATTATTGCTGCATCATTTGCTTGTATTGCACC
AATATGAAAAACACATATGGATTAGAAGTAGTTGGTCAATTCCACAAGGAATCCCTCACCTAGAGCT
CCCCCGATGAACATCCTCTCTGCGGTGATCACTGAAGCTTTCGGAGTGGCACTTGTAGGCTATGTGGCC
TCACTGGCTCTTGCTCAAGGATCTGCCAAAAAATCAAATATCAATTGATGACAACCAGGAATTTTGG
GCCATGGCCTCAGCAATATAGTTTCTTCAATTTTCTTCTGCATACCAAGTGTGCTGCCATGGGAAGG
ACGGCTGGCCTGTACAGCACAGGAGCGAAGACACAGGTGGCTTGTCTAATATCTTGCATTTTCGTCCTT
ATAGTCATCTATGCAATAGGACCTTTGCTTACTGGCTGCCATGTGTGTCCTTGAAGCATTATTGTT
GTGGGACTGAAGGAATGCTAATACAGTTCGAGATTTAAAAAATATTGGAATGTGGATAAAATCGAT
TGGGAATATGGGTCAATACATATGATTTACAATATGCTTTGCTGCCAATGTGGGACTGCTGTTTGGT
GTTGTTTGTACCATAGCTATAGTATAGGACGCTTCCCAAGAGCAATGACTGTAAGTATAAAAAATATG
AAAGAAATGGAATTTAAAGTGAAGACAGAAATGGACAGTGAACCCCTGCAGCAGGTGAAAATTTATCTCA
ATAAACAACCCGCTTGTCTTCTGAATGCAAAAAAATTTATACTGATTTAATGAACATGATCCAAAAG
GAAAATGCCTGTAATCAGCCACTTGATGATATCAGCAAGTGTGAACAAAACACATTGCTTAATCCCTA
TCCAATGGCAACTGCAATGAAGAAGCTTACAGTCTGCCCTAATGAGAAGTGTATTTAATCCTGGAT
TGCAGTGGATTTACCTTTTTGACTATTCTGGAGTCTCCATGCTTGTGAGGTTTACATGGACTGTAAA
GGCAGGAGTGTGGATGTATTGTTAGCCATTGTACAGCTTCTTGATAAAAGCAATGACGTATTATGGA
AACCTAGACTCAGAGAAACCAATTTTTTTGAATCGGTATCTGCTGCAATAAGTCATATCCATTCAAAT
AAGAATTTGAGCAAACACTCAGTGACCACAGTGAAGTC
ACGCGTACGCGGCCGCTCGAG - GFP Tag - GTTTAAAC
```

Protein Sequence: >Peptide sequence encoded by RG239227
 Blue=ORF Red=Cloning site Green=Tag(s)

MTGAKRKKKSM LWSKMHTPQCEDI IQWCRRLPILDWAPHYNLKENLLPDTVSGIMLAVQQVTQGLAFA
 VLSSVHPVFL YGSLFPAIIYAIFGMGHHVATGTFALTSLISANAVERIVPQNMQLTTQNSFVLGSL
 DFEMQRIHVAAAVSFLGGVIQVAMFVLQLGSATFVVTEPVISAMTTGAATHVVTSQVKYLLGMKMPYIS
 GPLGFFYIYAYVFENIKSVRLEALLLSLLSIVLVLVKELNEQFKRKIKVVLVLDLVLIIAASFACYCT
 NMENTYGLEVVGHIPQGI PSRAPPMNILSAVITEAFGVALVGYVASLALAQGSAKKFKYSIDDNQEFL
 AHGLSNIYSSFFFCIPSAAMGRTAGLYSTGAKTQVACLISCFVLIYIYAI GPLLYWLPVCVLAIIIV
 VGLKGLIQFRDLKKYWNVDKIDWGIWVSTYVFTICFAANVGLLFGVVCTIAIVIGRFPRAMTVSIKMN
 KEMEFVKVTEMDSETLQVVKIISINNPLVFLNAKKFYTDLMNMIQKENACNQPLDDISKCEQNTLLNSL
 SNGNCNEEASQSCPNEKCYLILDCSGTFFDYSGVSMLEVVYMDCKGRSDVDLLAHCTASLIKAMTYGG
 NLDSEKPIFFESVSAASHIHSNKNLSKLSHDHSEV
 TRTRPLEMESDEGLPAMEIECRITGTLNGVEFELVGGEGTPEQGRMTNKMKSTKGALTFSPYLLSHV
 MGYGFYHFGTYP SGYENPFLHAINNGGYTNTRIEKYEDGGVLHVSFSYRYEAGRVIGDFKVMGTGFPE
 SVIFTDKIIRS NATVEHLHPMGDNDLDGSFTRTFLRDGGYSSVVD SHMHFKSAIHP SILQNGGPMFA
 FRRVEEDHSNTELGIVEYQHAFKTPDADAGEERV

Restriction Sites: SgfI-MluI

Cloning Scheme:



ACCN: NM_001282356

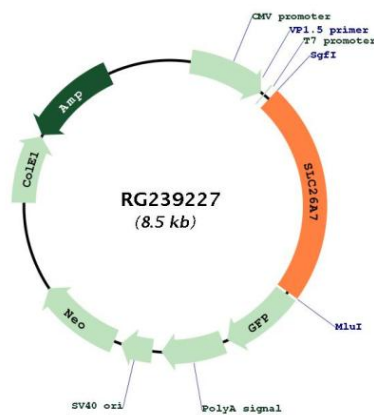
ORF Size: 1968 bp

OTI Disclaimer: The molecular sequence of this clone aligns with the gene accession number as a point of reference only. However, individual transcript sequences of the same gene can differ through naturally occurring variations (e.g. polymorphisms), each with its own valid existence. This clone is substantially in agreement with the reference, but a complete review of all prevailing variants is recommended prior to use. [More info](#)

OTI Annotation: This clone was engineered to express the complete ORF with an expression tag. Expression varies depending on the nature of the gene.

Components:	The ORF clone is ion-exchange column purified and shipped in a 2D barcoded Matrix tube containing 10ug of transfection-ready, dried plasmid DNA (reconstitute with 100 ul of water).
RefSeq:	NM_001282356.2
RefSeq Size:	5335 bp
RefSeq ORF:	1971 bp
Locus ID:	115111
UniProt ID:	Q8TE54
Cytogenetics:	8q21.3
Protein Families:	Transmembrane
MW:	72.2 kDa
Gene Summary:	This gene is one member of a family of sulfate/anion transporter genes. Family members are well conserved in gene structure and protein length yet have markedly different tissue expression patterns. This gene has abundant and specific expression in the kidney. Alternatively spliced transcript variants that encode different isoforms have been described. [provided by RefSeq, Aug 2013]

Product images:



Circular map for RG239227