

## Product datasheet for **RG239225**

### CLPTM1 (NM\_001282175) Human Tagged ORF Clone

#### Product data:

Product Type:	Expression Plasmids
Product Name:	CLPTM1 (NM_001282175) Human Tagged ORF Clone
Tag:	TurboGFP
Symbol:	CLPTM1
Mammalian Cell Selection:	Neomycin
Vector:	pCMV6-AC-GFP (PS100010)
E. coli Selection:	Ampicillin (100 ug/mL)



[View online »](#)

**ORF Nucleotide Sequence:**

>RG239225 representing NM\_001282175.  
 Blue=ORF Red=Cloning site Green=Tag(s)

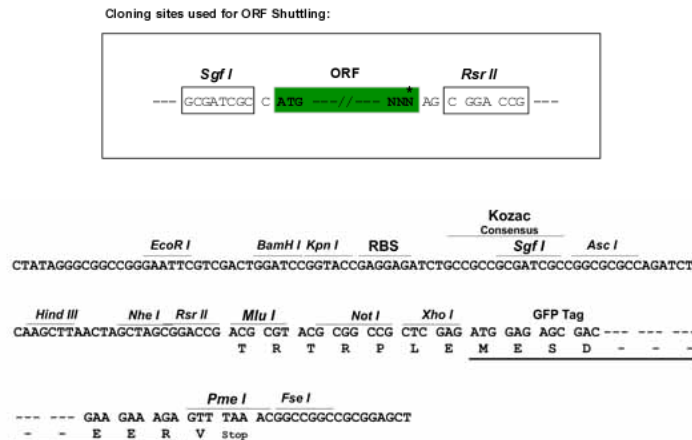
```
GCTCGTTTAGTGAACCGTCAGAATTTTGTAAACGACTCACTATAGGGCGGCCGGGAATTCGTGACTG
GATCCGGTACCGAGGAGATCTGCCGCCGCGATCGCC
ATGTCCCGAAAGGCTCATATAACCGAAAAGGTGACCAGCAATGGCAGCATCGGGAGGGACCCGCCAGCG
GAGACCCAGCCTCAGAACCACCGGCCAGCCGCGCACCCAATGCCTGGCAGGTTCATCAAAGGTGTGCTG
TTTAGGATCTTCATCATCTGGGCCATCAGCAGTTGGTTCCGCCGAGGGCCGGCCCTCAGGACCAGGCG
GGCCCCGAGGAGCTCCACGCGTCGCCAGCCGCAACCTGTTCCCAAAGACACTTAAATGAACCTGCAT
GTGTACATCTCAGAGCACGAGCACTTTACAGACTTCAACGCCACGTCGGCACTCTTCTGGGAACAGCAC
GATCTTGTGTATGGGCACTGGACTAGCGGCGAGAACTCAGACGGCTGCTACGAGCACTTTGCTGAGCTC
GATATCCACAGAGCGTCCAGCAGAACGGCTCCATCTACATCCACGTTTACTTCACCAAGAGTGGCTTC
CACCCAGACCCCGCAGAAGGCCCTGTACCGCCGGCTTGCCACAGTCCACATGTCCGGATGATCAAC
AAATAAAGCGCAGACGATTTAGAAAACCAAGAACCTGCTGACAGGAGAGACAGAAGCGGACCCAGAA
ATGATCAAGAGGGCTGAGGACTATGGGCCTGTGGAGGTGATCTCCATTGGCACCCCAACATCACCATC
AACATCGTGGACGACCACACGCGGTGGGTGAAGGGCAGTGTGCCCCCTCCCTGGATCAATATGTGAAG
TTCGACGCCGTGAGCGGTGACTACTATCCCATCATCTACTTCAATGACTACTGGAACCTGCAGAAGGAC
TACTACCCCATCAACGAGAGCCTGGCCAGCCTGCCGCTCCGCTCTCTTCTGCCACTCTCGCTTTGG
CGCTGGCAGCTCTATGCTGCCAGAGCACAAGTCGCCCTGGAACCTCCTGGGTGATGAGTTGTACGAG
CAGTCAGATGAGGAGCAGGACTCGGTGAAGGTGGCCCTGCTGGAGACCAACCCCTACCTGCTGGCGCTC
ACCATCATCGTGTCTATCGTTCACAGTGTCTTCGAGTTCCTGGCCTTCAAGAATGATATCCAGTTCTGG
AACAGCCGGCAGTCCCTGGAGGGCCTGTCCGTGCGCTCCGTCTTCTTCGGCGTTTTCCAGTCATTCTGTG
GTCCTCCTCTACATCCTGGACAACGAGACCAACTTCGTGGTCCAGTCCAGTCCAGTCTTCATTGGGGTCCCTC
ATCGACCTCTGGAAGATACCAAGGTATGGACGTCCGGCTGGACCGAGAGCACAGGGTGGCAGGAATC
TTCGCCCGCTATCCTTCAAGGACAAGTCCACGTATATCGAGTCTCGACCAAAGTGATGATGATG
GCATTCGGTACCTGTCTGGATCCTCTTCCCGCTCCTGGGCTGCTATGCCGTCTACAGTCTTCTGTAC
CTGGAGCACAAGGGCTGGTACTCCTGGGTGCTCAGCATGCTCTACGGCTTCTGCTGACCTTCGGCTTC
ATCACCATGACGCCCCAGCTCTTCATCAACTACAAGTCAAGTCTGTGGCCACCTTCCCTGGCGCATG
CTCACCTACAAGGCCCTCAACACATTCATCGACGACCTGTTGCGCTTTGTCATCAAGATGCCCGTTATG
TACCGGATCGGCTGCCTGCGGGACGATGTGGTTTTCTTCATCTACCTTACCAACGGTGGATCTACCGC
GTCGACCCACCCGAGTCAACGAGTTTGGCATGAGTGGAGAAGACCCACAGCTGCCGCCCCGTGGCC
GAGGTTCCACAGCAGCAGGGGCCCTCACGCCACACCTGCACCCACCAGCACCAGCCAGGGAG
GAGGCCTCCACGTCCCTGCCACCAAGCCACCCAGGGGCCAGCTCTGCCAGCGAGCCCAAGGAAGCC
CCTCAAAGCCAGCAGAGGACAAGAAAAGGAT
AGGCGACCGACGCGTACGCGGCCGCTCGAG - GFP Tag - GTTAAAC
```

**Protein Sequence:** >Peptide sequence encoded by RG239225  
 Blue=ORF Red=Cloning site Green=Tag(s)

```
MSRKAHITEKVTSNQSIGRDPPEAETQPQNPPAQPAPNAWQVIKGVLFRIIWAISSWFRGPAPQDQA
GPGGAPRVASRNLFKDTLMLNHVYI SEHEHFTDFNATSALFWEQHDLVYGDWTSNGNSDGCYEHAEL
DIPQSVQQNGSIYIHVYFTKSGFHPDPRQKALYRRLATVHMSRMINKYKRRRFQKTKNLLTGETEADPE
MIKRAEDYGPVEVISHWHPNITINIVDDHTPWVKGSPVPPLDQYVKFDAVSGDYPIIYFNQYWNLQKD
YYPINESLASLPLRVSFPLSLWRWQLYAAQSTKSPWNFLGDELYEQSDEEQDSVKVALLETNPYLLAL
TIIIVSVHSVFEFLAFKNDIQFWNSRQSLLEGLSVRSVFFGVFQSFVLLYILDNETNFVQVSVFIVGL
IDLWKITKVMQDRLDREHRVAGIFPRLSFKDKSTYIESSTKYVDDMAFRYLSWILFLLGCVAVYSLLY
LEHKGWYSWVLSMLYGFLLTFGITMTPQLFINYKLSVAHLPWRMLTYKALNTFIDDLFAFVIKMPVM
YRIGCLRDDVVFYIYLQRWIYRVDPTRVNEFGMSGEDPTAAAPVAEVPTAAGALTPTPAPTTTTATRE
EASTSLPTKPTQGASSASEPQEAPPKPAEDKKKD
SGPTRRTRPLEMESDESGLPAMEIECRITGTLNGVEFELVGGGEGTPEQGRMTNKMSTKGALTFSPYLL
SHVMGYGFYHFGTYPSTYENPFLHAINNGGYTNTRIEKYEDGGVLLHVSFSYRYEAGRVIQDFKVMGTGF
PEDSVIFTDKIIRSNATVEHLHPMGDNDLDGSFTRTFLRDGGYSSVVDSHMHFKSAIHPSILQNGGP
MFAFRRVEEDHSNTELGIVEYQHAFKTPDADAGEERV
```

**Restriction Sites:** SgfI-RsrII

**Cloning Scheme:**



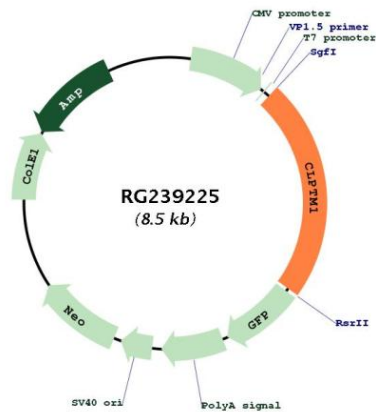
**ACCN:** NM\_001282175

**ORF Size:** 1965 bp

**OTI Disclaimer:** The molecular sequence of this clone aligns with the gene accession number as a point of reference only. However, individual transcript sequences of the same gene can differ through naturally occurring variations (e.g. polymorphisms), each with its own valid existence. This clone is substantially in agreement with the reference, but a complete review of all prevailing variants is recommended prior to use. [More info](#)

**OTI Annotation:** This clone was engineered to express the complete ORF with an expression tag. Expression varies depending on the nature of the gene.

<b>Components:</b>	The ORF clone is ion-exchange column purified and shipped in a 2D barcoded Matrix tube containing 10ug of transfection-ready, dried plasmid DNA (reconstitute with 100 ul of water).
<b>RefSeq:</b>	<a href="#">NM_001282175.1</a> , <a href="#">NP_001269104.1</a>
<b>RefSeq Size:</b>	2498 bp
<b>RefSeq ORF:</b>	1968 bp
<b>Locus ID:</b>	1209
<b>UniProt ID:</b>	<a href="#">O96005</a>
<b>Cytogenetics:</b>	19q13.32
<b>Protein Families:</b>	Transmembrane
<b>MW:</b>	75.6 kDa
<b>Gene Summary:</b>	May play a role in T-cell development.[UniProtKB/Swiss-Prot Function]

**Product images:**


Circular map for RG239225