

Product datasheet for **RG239220**

ZNF133 (NM_001282999) Human Tagged ORF Clone

Product data:

Product Type:	Expression Plasmids
Product Name:	ZNF133 (NM_001282999) Human Tagged ORF Clone
Tag:	TurboGFP
Symbol:	ZNF133
Synonyms:	pHZ-13; pHZ-66; ZNF150
Mammalian Cell Selection:	Neomycin
Vector:	pCMV6-AC-GFP (PS100010)
E. coli Selection:	Ampicillin (100 ug/mL)



[View online »](#)

ORF Nucleotide
Sequence:

>RG239220 representing NM_001282999.
Blue=ORF Red=Cloning site Green=Tag(s)

```
GCTCGTTTAGTGAACCGTCAGAATTTTGTAAACGACTCACTATAGGGCGGCCGGGAATTCGTGCGACTG
GATCCGGTACCGAGGAGATCTGCCGCCACGATCGCC
ATGGCATTACAGGATGTGGCTGTGGATTTCACCCAGGATGAGTGGAGGCTGCTGAGCCCTGCTCAAAGG
ACTCTGTACAGAGAGGTGATGCTGGAGAACTACAGCAACCTGGTCTCACTGGGAATTTCAATTTCTAAA
CCAGAACTCATCACCCAGCTGGAGCAAGGAAAGAGACCTGGAGAGAGGAAAAAATGTTACCCGGCA
ACCTGTCCAGCAGATCCAGAGCCAGAGCTCTACCTCGATCCTTTCTGCCCTCCGGGTTTCTCCAGTCAG
AAATTCCCCATGCAGCATGTGCTGTGTAATCATCCCCCTGGATCTTACATGCTTGTGTGCAGAAGGT
AACATCCAGCCTGGGATCCGGGCCAGGGACCAGGAGAAGCAGCAACAAGCCTCTGAGGGGAGACCC
TGGAGTGATCAAGCAGAAGTCTGAGGGAGAAGGTGCCATGCCTTTGTTTGAAGAACCAAGAAAAGG
ACTCTGGGAGCCTTCTCCAGGCCACCCAGAGGCAGCCAGTCAGCTCTCGGAACGGCCTCAGAGGGGTG
GAGTTAGAAGCCAGCCAGCTCAGACAGGAACCTGAGGAAACAGACAAATTGTTGAAGAGGATAGAA
GTCTTAGGATTTGGAACAGTCAACTGTGGAGAGTGTGGACTGAGCTTCAGCAAGATGACAAACCTGCTC
AGTCACCAGCGGATACACTCAGGGGAGAAGCCCTACGTGTGTGGGTATGTGAGAAGGGCTTCAGCCTA
AAGAAGAGCCTCGCCAGACACCAGAAGGCACACTCGGGGGAGAAGCCAATTGTGTGCAGGGAGTGTGGA
CGAGGCTTTAACCGAAGTCAACGCTAATCATACACGAACGGACACACTCCGGTGAGAAACCTTACATG
TGCAGTGAGTGTGGCGAGGCTTCAGCCAGAAGTCAAACCTCATCATACACCAGAGGACACACTCAGGG
GAAAAGCCTTACGTGTGCCGGGAATGTGGCAAAGGCTTCAGCCAGAAGTCAGCTGTGCTGAGACACCAG
AGGACACACTTGGAGGAGAAGACCATCGTGTGCAGTGACTGTGGCCTGGGCTTCAGCGACAGGTCAAAC
CTCATCTCCACCAGAGGACGCACTCTGGGGAGAAGCCCTACGCCTGCAAGGAGTGTGGCGATGCTTC
AGGCAGAGGACCACCCTTGTCAACCACCAGAGGACACACTCAAAGGAGAAGCCCTATGTGTGCGGGGTG
TGTGGGCACAGCTTCAGCCAGAATTCAACCCTCATCTCTCACAGGCGGACACACTGGGGAGAAGCCG
TATGTTTGTGGGTGTGTGGCGAGGCTTTAGTCTCAAGTCACACCTCAACAGACACCAGAACATACAC
TCAGGAGAGAAGCCATTGTGTGCAAGGACTGTGGCCGGGCTTCAGCCAGCAATCCAACCTCATCAGA
CACCAGAGGACGCACTCAGGCGAGAAGCCATGGTGTGTGGGAGTGCAGGCGAGGCTTCAGCCAGAAG
TCAAACCTTGTGACACCAGAGGACGCACTCAGGGGAGAGGCCGTATGTGTGCCGAGAGTGCAGGCGA
GGCTTTAGCCACCAGGCCGTCTCATCAGGCACAAGCGGAAGCACTCGAGGGAGAAGCCCTACATGTGC
AGGCAGTGTGACTGGGCTTTGGCAATAAGTCAGCTTAATTACACACAAGCGGGCTCACTCGGAAGAG
AAGCCTTGTGTGTGCAGAGAGTGTGCCAAGGCTTTCTCCAAAAGTCACACCTCACCTTACATCAAATG
ACACATACGGGGAGAAGCCATATGTGTGCAAGACGTGTGGGCGGGCTTCAGCCTCAAGTCTCACCTC
AGCAGACACAGGAAGACCACGTCTGTCCACCACAGACTGCCAGTGCAGCCGACCCTGAGCCGTGTGCA
GGGCAACCTTCGGATTCCTTATACTCTCTC
ACGCGTACGCGGCCGCTCGAG - GFP Tag - GTTTAAAC
```

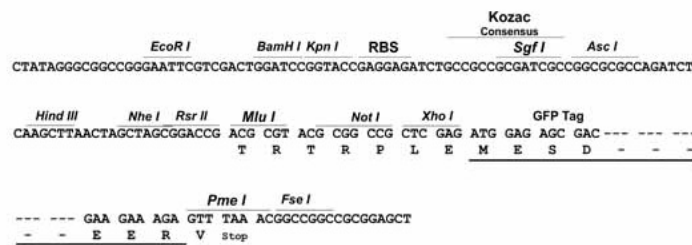
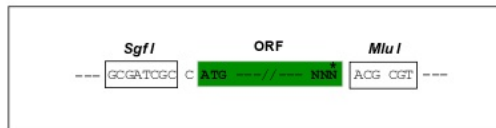
Protein Sequence: >Peptide sequence encoded by RG239220
 Blue=ORF Red=Cloning site Green=Tag(s)

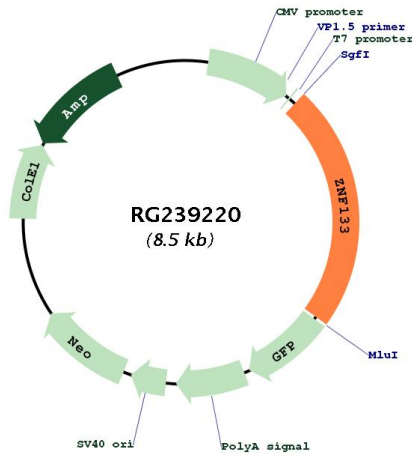
MAFRDVAVDFTQDEWRLLSPAQRTL YREVML ENYSNLVSLGISFSKPELITQLEQKETWREEKKCSPA
 TCPADPEPELYLDPFCPPGFSQKFPMQHVL CNHPPWIF TCLCAEGNIQPGDPGPDQEQQASEGRP
 WSDQAE GPEGEGAMPLFGRTKKRTL GAF SRPPQRPVSSRNL RGVLEASPAQTGNPEETDKLLKRIE
 VLGFGTVNCGEGLSFSKMTNLLSHQRIHSGEKPYVCGVCEKGFSLKSLARHQKAHSGEKPIVCRECG
 RGFNRKSTLI IHERTHSGEKPYMCSECGRGSQKSNLIIHQRT HSGEKPYVCRECGKGF SQKSAVVRHQ
 RTHLEEKTI VCSDCGLGFSDRSNLISHQRTHSGEKPYACKECGRCFRQRTTLVNHQRTHSKEKPYVCGV
 CGHSFSQNSTLISHRRHTGKPYVCGVCGRGS LKSHLNRHQNIHSGEKPIVCKDCGRGSQKSNLIR
 HQRT HSGEKPMVCGEGRGSQKSNLVAHQRT HSGERPYVCRECGRGS HQAGLIRHKRHSREKPYMC
 RQCGLGFGNKSALITHKRAHSEEKPCVCRECGQGLQKSHLTLHQMTHTGKPYVCKTCGRGS LKSHL
 SRHRKTT SVHRLPVQDPPEPCAGQPSDSL YSL
 TRTRPLEMESDESGLPAMEIECRITGTLNGVEFELVGGEGTPEQGRMTNKMKSTKGALTFSPYLLSHV
 MGYGFYHFGTYP SGYENPFLHAINNGGYNTRIEKYEDGGVLHVSFSYRYEAGRVI GDFKVMGTGFPEP
 SVIFTDKIIRS NATVEHLHPMGDNDLDGSFTRTFSLRDGGYSSVVD SHMHFKSAIHPSILQNGGPMFA
 FRRVEEDHSNTELGIVEYQHAFKTPDADAGEERV

Restriction Sites: SgfI-MluI

Cloning Scheme:

Cloning sites used for ORF Shuttling:



Plasmid Map:


ACCN:	NM_001282999
ORF Size:	1962 bp
OTI Disclaimer:	The molecular sequence of this clone aligns with the gene accession number as a point of reference only. However, individual transcript sequences of the same gene can differ through naturally occurring variations (e.g. polymorphisms), each with its own valid existence. This clone is substantially in agreement with the reference, but a complete review of all prevailing variants is recommended prior to use. More info
OTI Annotation:	This clone was engineered to express the complete ORF with an expression tag. Expression varies depending on the nature of the gene.
Components:	The ORF clone is ion-exchange column purified and shipped in a 2D barcoded Matrix tube containing 10ug of transfection-ready, dried plasmid DNA (reconstitute with 100 ul of water).
RefSeq:	NM_001282999.2
RefSeq Size:	2503 bp
RefSeq ORF:	1965 bp
Locus ID:	7692
UniProt ID:	P52736
Cytogenetics:	20p11.23
Protein Families:	Transcription Factors

MW: 73.9 kDa

Gene Summary: May be involved in transcriptional regulation as a repressor.[UniProtKB/Swiss-Prot Function]