

Product datasheet for **RG239217**

GLB1L (NM_001286423) Human Tagged ORF Clone

Product data:

Product Type:	Expression Plasmids
Product Name:	GLB1L (NM_001286423) Human Tagged ORF Clone
Tag:	TurboGFP
Symbol:	GLB1L
Mammalian Cell Selection:	Neomycin
Vector:	pCMV6-AC-GFP (PS100010)
E. coli Selection:	Ampicillin (100 ug/mL)



[View online »](#)

ORF Nucleotide
Sequence:

>RG239217 representing NM_001286423.
Blue=ORF Red=Cloning site Green=Tag(s)

```
GCTCGTTTAGTGAACCGTCAGAATTTTGTAAACGACTCACTATAGGGCGGCCGGGAATTCGTGACTG
GATCCGGTACCGAGGAGATCTGCCGCCACGATCGCC
ATGGCTCCCAAGAAGCTGTCTGCCTTCGTTCCCTGCTGCCGCTCAGCCTGACGCTACTGCTGCC
CAGGCAGACACTCGGTCGTTTCGTAGTGGATAGGGGTCATGACCGTTTCTCCTAGACGGGCCCGTTT
CGCTATGTGTCTGGCAGCCTGCACTACTTTCGGGTACCGCGGTGCTTTGGGCCGACCGGCTTTTGAAG
ATGCGATGGAGCGGCCTCAACGCCATACAGTTTTATGTGCCCTGAACTACCACGAGCCACAGCCTGGG
GTCTATAACTTTAATGGCAGCCGGACCTCATTGCCTTCTGAATGAGGCAGCTCTAGCGAACCTGTTG
GTCATACTGAGACCAGGACCTTACATCTGTGCAGAGTGGGAGATGGGGGTCTCCCATCTGTTGCTT
CGAAAACCTGAAATTCATCTAAGAACCTCAGATCCAGACTTCTTGCCGAGTGGACTCCTGTTCAAG
GTCTTGCTGCCAAGATATCCATGGCTTTATCACAATGGGGGCAACATCATTAGCATTAGGTGGAG
AATGAATATGGTAGCTACAGAGCCTGTGACTTCAGCTACATGAGGCACTGGCTGGGCTCTCCGTGCA
CTGCTAGGAGAAAAGATCTTGCTCTTACCACAGATGGGCTGAAGGACTCAAGTGTGGCTCCCTCCGG
GGACTCTATACCACTGTAGATTTTGGCCAGCTGACAACATGACCAAAATCTTTACCCTGCTTCGGAAG
TATGAACCCCATGGGCCATTGGTAACTCTGAGTACTACACAGGCTGGCTGGATTACTGGGGCCAGAAT
CACTCCACACGGTCTGTGTCAGCTGTAACCAAAGGACTAGAGAACATGCTCAAGTTGGGAGCCAGTGTG
AACATGTACATGTTCCATGGAGGTACCAACTTTGGATATTGGAATGGTGGCGATAAGAAGGGACGCTTC
CTTCCGATTACTACCAGCTATGACTATGATGCACCTATATCTGAAGCAGGGGACCCACACCTAAGCTT
TTTGCTCTTCGAGATGTCATCAGCAAGTCCAGGAAGTTCCTTTGGGACCTTACCTCCCCGAGCCCC
AAGATGATGCTTGGACCTGTGACTCTGCACCTGGTTGGCATTACTGGCTTTCCTAGACTTGCTTTGC
CCCCGTGGGCCCATTCATTCAATCTTGCCAATGACCTTTGAGGCTGTCAAGCAGGACCATTGGCTTCATG
TTGTACCGAACCTATATGACCCATACCATTTTTGAGCCAACACCATTCTGGGTGCCAAATAATGGAGTC
CATGACCGTGCCTATGTGATGGTGGATGGGGTGTCCAGGGTGTGTGGAGCGAAATATGAGAGACAAA
CTATTTTTGACGGGGAACTGGGGTCCAAACTGGATATCTTGGTGGAGAACATGGGGAGGCTCAGCTTT
GGGTCTAACAGCAGTACTTCAAGGGCCTGTTGAAGCCACCAATTCTGGGGCAAACAATCCTTACCAG
TGGATGATGTTCCCTCTGAAAATTGATAACCTTGTGAAGTGGTGGTTCCCTCCAGTTGCCAAAATGG
CCATATCCTCAAGCTCCTTCTGGCCCCACATTCTACTCCAAAACATTTCCAATTTTAGGCTCAGTTGGG
GACACATTTCTATATCTACCTGGATGGACCAAGGGCCAAGTCTGGATCAATGGGTTAACTTGGGCCGG
TACTGGACAAAGCAGGGGCCACAACAGACCCTCTACGTGCCAAGATTCTGCTGTTTCTAGGGGAGCC
CTCAACAAAATTACATTGCTGGAAGTAGAAGATGTACCTCTCCAGCCCCAAGTCCAATTTTTGGATAAG
CCTATCCTCAATAGCACTAGTACTTTGCACAGGACACATATCAATTCCTTTTCCAGCTGATACACTGAGT
GCCTCTGAACCAATGGAGTTAAGTGGGCAC
ACGCGTACGCGGCCGCTCGAG - GFP Tag - GTTAAAC
```

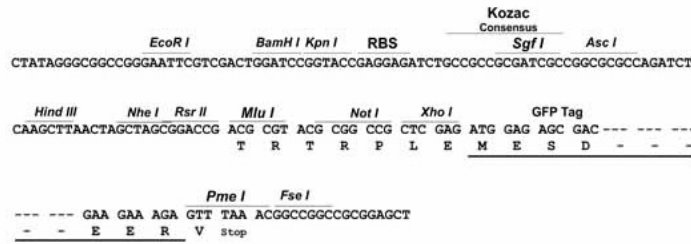
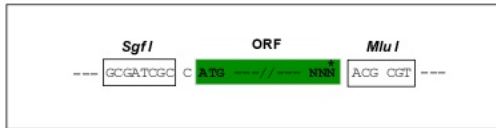
Protein Sequence: >Peptide sequence encoded by RG239217
 Blue=ORF Red=Cloning site Green=Tag(s)

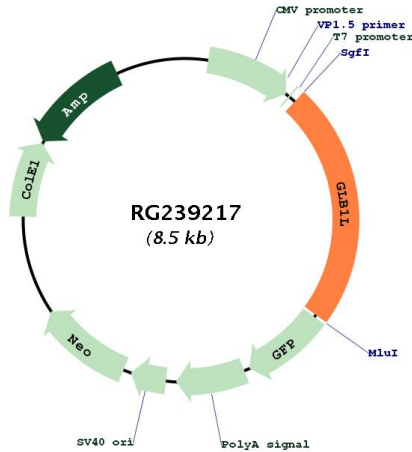
MAPKKLSCLRSLLLPLSLTLLLQADTRSFVDRGHDRFLLDGAPFRYVSGSLHYFRVPRVLWADRLLK
 MRWSGLNAIQFYVPWNYHEPQPGVYNFNGSRDLIAFLNEAALANLLVILRPGPYICAEWEMGGLPSWLL
 RKPEIHLRTSDPDFLAAVDSWFKVLLPKIYPWL YHNGGNIISIQVENEYGSYRACDFSYMRHLAGLFRA
 LLGEKILLFTTDGPEGLKCGSLRGLYTTVDFGPADNMTKIFTLRKYEPHGPLVNSEYYTGWLDYWGQN
 HSTRSVSAVTKLENMLKLGASVNMFMFHGGTNFGYWNGADKKGRFLPITTSYDYDAPISEAGDTPKL
 FALRDVISKFQEVPLGPLPPSPKMMLGPVTLHLVGHLLAFLDLLCPRGPIHSILPMTFEAVKQDHGFM
 LYRTYMTHTIFEPTPFWVPNNGVHDRAVYVMDGVFQGVVERNMRDKLFLTGKLGSKLDILVENMGRLSF
 GSNSSDFKGLLKPPILGQITILTQWMMFPLKIDNLVKKWFPLQLPKWPYPQAPSGPTFYSKTFPILGSVG
 DTFLYLPGWTKGQVWINGFNLGRYWTQGPQQTLYVPRFLLFPRGALNKITLLEEDVPLQPQVQLDK
 PILNSTSTLHRTHINSLADTLSASEPMELSGH
TRTRPLEMESDESGLPAMEIECRITGTLNGVEFELVGGEGTPEQGRMTNKMKSTKGALTFSPYLLSHV
 MGYGFYHFGTYPSTYENPFLHAINNGGYTNTRIEKYEDGGVLHVSFSYRYEAGRVIGDFKVMGTGFPED
 SVIFTDKIIRSNAATVEHLHPMGDNDLDGSFTRTFSLRDGGYSSVVDSHMHFKSAIHPISILQNGGPMFA
 FRRVEEDHSNTELGIVEYQHAFKTPDADAGEERV

Restriction Sites: SgfI-MluI

Cloning Scheme:

Cloning sites used for ORF Shuttling:



Plasmid Map:


ACCN: NM_001286423

ORF Size: 1962 bp

OTI Disclaimer: The molecular sequence of this clone aligns with the gene accession number as a point of reference only. However, individual transcript sequences of the same gene can differ through naturally occurring variations (e.g. polymorphisms), each with its own valid existence. This clone is substantially in agreement with the reference, but a complete review of all prevailing variants is recommended prior to use. [More info](#)

OTI Annotation: This clone was engineered to express the complete ORF with an expression tag. Expression varies depending on the nature of the gene.

Components: The ORF clone is ion-exchange column purified and shipped in a 2D barcoded Matrix tube containing 10ug of transfection-ready, dried plasmid DNA (reconstitute with 100 ul of water).

RefSeq: [NM_001286423.2](#)

RefSeq Size: 2710 bp

RefSeq ORF: 1965 bp

Locus ID: 79411

UniProt ID: [Q6UWU2](#)

Cytogenetics: 2q35

MW: 74.2 kDa

Gene Summary: Probable glycosyl hydrolase.[UniProtKB/Swiss-Prot Function]