

Product datasheet for **RG239212**

SLC44A1 (NM_001286730) Human Tagged ORF Clone

Product data:

Product Type:	Expression Plasmids
Product Name:	SLC44A1 (NM_001286730) Human Tagged ORF Clone
Tag:	TurboGFP
Symbol:	SLC44A1
Synonyms:	CD92; CDW92; CHTL1; CONATOC; CTL1
Mammalian Cell Selection:	Neomycin
Vector:	pCMV6-AC-GFP (PS100010)
E. coli Selection:	Ampicillin (100 ug/mL)



[View online »](#)

ORF Nucleotide
Sequence:

>RG239212 representing NM_001286730.
Blue=ORF Red=Cloning site Green=Tag(s)

```
GCTCGTTTAGTGAACCGTCAGAATTTTGTAAACGACTCACTATAGGGCGGCCGGGAATTCGTGACTG
GATCCGGTACCGAGGAGATCTGCCGCCACGATCGCC
ATGGGCTGCTGCAGCTCCGCCTCCTCCGCCGCGCAGAGCTCCAAACGAGAATGGAAGCCGCTGGAGGAC
CGTAGCTGCACAGACATACCATGGCTGCTGCTCTTCATCCTCTTCTGCATTGGGATGGGATTTATTTGT
GGCTTTTCAATAGCAACAGGTGCAGCAGCAAGACTAGTGTGAGGATACGACAGCTATGGAATATCTGT
GGGCAGAAAAATACAAAGTTGGAAGCAATACAAACAGTGGCATGGACCACCCAGCGGAAGTATGTA
TTCTTTTTGGATCCATGCAACCTGGACTTGATAAACCGGAAGATTAAGTCTGTAGCACTGTGTAGCA
GCGTGTCCAAGGCAAGAAGTAACTCTGAGTGTGTTGAGAAGTTGACAGAGATAAATGGTTCAGCC
CTATGTAGCTACAACCTAAAGCCTTCTGAATACACTACATCTCCAAAATCTTCTGTTCTCTGCCAAA
CTACCAGTTCAGCGAGTGCACCTATTCCATTCTCCATCGTGTGCTCCTGTGAACATTCCTGCTAT
GCCAAGTTTGAGAGGCCCTGATCACCTTTGTCAGTGACAATAGTGTCTTACACAGGCTGATTAGTGA
GTAATGACCAGCAAGAAATTATATTGGGACTTTGCTTGTATCACTAGTCTATCCATGATTTTGTAG
GTGATAATCAGGTATATCAAGAGTACTTGTGTGGATCTTAACGATTCTGGTCATACTCCGTTCACTT
GGAGGCACAGGTGACTATGGTGGCTGTATGCAAAGCAAAGAAGTCTCCCAAAGAACTGTTACTCCT
GAGCAGCTTCAGATAGCTGAAGACAATCTTCGGGCCCTCCTCATTATGCCATTTAGCTACAGTGTTC
ACAGTGATCTTATTCCTGATAATGTTGGTTATGCGCAAACGTGTTGCTCTTACCATCGCCTTGTCCAC
GTAGCTGGCAAGGTCTTCATTCACTTGGCACTGCTAGTCTTCCAACCTTCTGGACTTTCTTTGCTCTT
GTCTTGTTTGGGTGACTGGATCATGACACTTCTTTTCTTGGCACTACCGGCAGTCTGTTGAGAAAT
GAGCAAGGCTTTGTGGAGTTCAAATTTCTGGCCTCTGCAGTACATGTGGTGGTACCATGTGGTGGC
CTGATTTGGATCAGTGAATTTATTCTAGCATGTCAGCAGATGACAGTGGCAGGAGCTGTGGTAAACATAC
TATTTTACTAGGGATAAAAGGAATTTGCCATTTACACCTATTTTGGCATCAGTAAATCGCCTTATTCGT
TACCACCTAGGTACGGTGGCAAAGGATCTTTCATTATCACATTAGTCAAATTCGCGAATGATCCTT
ATGTATATTCACAGTCAAGCTCAAAGGAAAGGAAAATGCTTGTGCACGATGTGTGCTGAAATCTTGCAAT
TGTTGCCCTTGGTGTCTTGAAGTGCCTAAATATTTAAATCAGAATGCATACACAGCCACAGCTATC
AACAGCACCAACTTCTGCACCTCAGCAAAGGATGCCTTTGTCATTCTGGTGGAGAATGCTTGGCAGTG
GCTACCATCAACACAGTAGGAGATTTTATGTTATTCCTTGGCAAGGTGCTGATAGTCTGCAGCACAGGT
TTAGCTGGGATTATGCTGCTCACTACCAGCAGGACTACACAGTATGGGTGCTGCCTCTGATCATCGTC
TGCTCTTTGCTTTCCTAGTCGCTCATTGCTTCTGCTATTTATGAAATGGTAGTGGATGTATTATTC
TTGTGTTTTGCCATTGATACAAAATACAATGATGGGAGCCCTGGCAGAGAATTCTATATGGATAAAGTG
CTGATGGAGTTTGTGAAAACAGTAGGAAAGCAATGAAAGAAGCTGGTAAGGGAGGCGTCTGCTGATTCC
AGAGAGCTAAAGCCGATGATTAAG
ACCGGTACGCGGCCGCTCGAG - GFP Tag - GTTAAAC
```

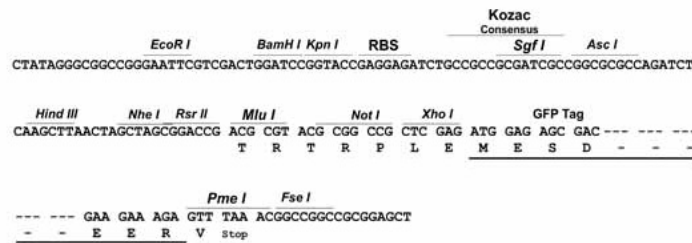
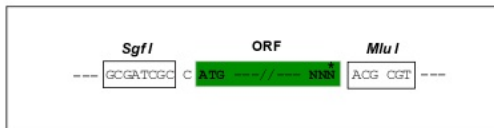
Protein Sequence: >Peptide sequence encoded by RG239212
 Blue=ORF Red=Cloning site Green=Tag(s)

MGCCSSASSAAQSSKREWKPLEDRSCTDIPWLLLFILFCIGMGFICGFSIATGAAARLVSGYDSYGNIC
 GQKNTKLEAIPNSGMDHTQRKYVFFLDPCNLDL INRRIKSVALCVAACPRQELKTLSDVQKFAEINGSA
 LCSYNLKPSEYTTSPKSSVLCPLPVPASAPIPFHRCAPVNI SCYAKFAEALITFVSDNSVLHRLISG
 VMTSKEIILGLCLLSVLMSILMVIIRYISRVLVWILTILVILGSLGGTGVLWVLYAKQRRSPKETVTP
 EQLQIAEDNLRALLIYATVATVFTVILFLIMLVMRKRVALTIALFHVAGKVF IHLPLLVFQPFWTF
 VLFWVYIMTLLFLGTTGSPVQNEQGFVEFKISGPLQYMWYHVVGLIWI SEFILACQMTVAGAVVTY
 YFTRDKRNLPTPILASVNLIRYHLGTVAKGSFIITLVKIPRMILMYIHSQKKGKENCARCVLKSCI
 CCLWCLEKCLNYLNQAYTATAINSTNFCTSAKDAFVILVENALRVATINTVGD FMLFLGKVLIVCSTG
 LAGIMLLNYQQDYTVWVLP LIIVCLFAFLVAHCFLSIYEMVVDVLF LCF AIDTKYNDGSPGREFYMDKV
 LMEFVENS RKAMKEAGKGGVADSRELKPMIK
TRTRPLEME SDE SGLPAMEIECRITGTLNGVEFELVGGEGTPEQGRMTNKMKSTKGALTFSPYLLSHV
 MGYGFYHFGTYP SGYENPFLHAINNGGYNTRIEKYEDGGVLHVSFSYRYEAGRVIGDFKVMGTGFPE
 SVIFTDKIIRSNATVEHLHPMGDNDLDGSFTRTFLRDGGYSSVVD SHMHFKSAIHPSILQNGGPMFA
 FRRVEEDHSNTELGIVEYQHAFKTPDADAGEERV

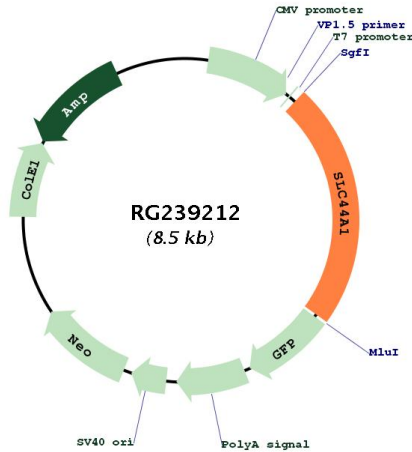
Restriction Sites: SgfI-MluI

Cloning Scheme:

Cloning sites used for ORF Shuttling:



Plasmid Map:



ACCN:	NM_001286730
ORF Size:	1956 bp
OTI Disclaimer:	The molecular sequence of this clone aligns with the gene accession number as a point of reference only. However, individual transcript sequences of the same gene can differ through naturally occurring variations (e.g. polymorphisms), each with its own valid existence. This clone is substantially in agreement with the reference, but a complete review of all prevailing variants is recommended prior to use. More info
OTI Annotation:	This clone was engineered to express the complete ORF with an expression tag. Expression varies depending on the nature of the gene.
Components:	The ORF clone is ion-exchange column purified and shipped in a 2D barcoded Matrix tube containing 10ug of transfection-ready, dried plasmid DNA (reconstitute with 100 ul of water).
RefSeq:	NM_001286730.2
RefSeq Size:	9650 bp
RefSeq ORF:	1959 bp
Locus ID:	23446
UniProt ID:	Q8WWI5
Cytogenetics:	9q31.1-q31.2
Protein Families:	Transmembrane

MW: 73.5 kDa

Gene Summary: Choline transporter. May be involved in membrane synthesis and myelin production.
[UniProtKB/Swiss-Prot Function]