

Product datasheet for **RG239209**

TLE4 (NM_001282760) Human Tagged ORF Clone

Product data:

| | |
|---------------------------|---|
| Product Type: | Expression Plasmids |
| Product Name: | TLE4 (NM_001282760) Human Tagged ORF Clone |
| Tag: | TurboGFP |
| Symbol: | TLE4 |
| Synonyms: | BCE-1; BCE1; E(spl); E(spl); ESG; ESG4; Grg-4; GRG4 |
| Mammalian Cell Selection: | Neomycin |
| Vector: | pCMV6-AC-GFP (PS100010) |
| E. coli Selection: | Ampicillin (100 ug/mL) |



[View online »](#)

ORF Nucleotide
Sequence:

>RG239209 representing NM_001282760.
Blue=ORF Red=Cloning site Green=Tag(s)

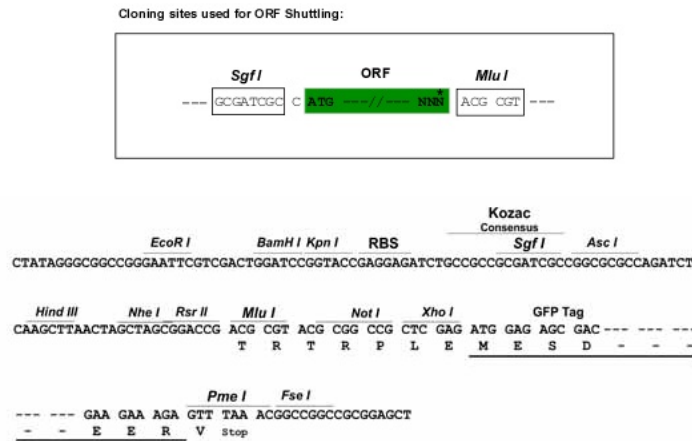
```
GCTCGTTTAGTGAACCGTCAGAATTTTGTAAACGACTCACTATAGGGCGGCCGGGAATTCGTGACTG
GATCCGGTACCGAGGAGATCTGCCGCCACGATCGCC
ATGGCAGAAGTGAACGCCATCATTGGGCAACAACCTCCAGGCCAGCATTATCACATGGACATGGTCTC
CCCGTACCTCTGACTCCACACCCTTCAGGGCTCCAGCCCCCTGCCATTCCACCCATCGGTAGCAGTGCC
GGGCTTCTGGCCCTCTCCAGTGCTCTAGGAGGTCAGTCCCATCTTCCAATTAAGATGAGAAGAAGCAC
CATGACAATGATACCAAAGAGACAGAGACTCCATCAAGAGCTCTTCAGTATCCCCATCAGCCAGTTTC
CGAGGTGCTGAGAAGCACAGAACTCCGCAGACTACTCCTCAGAGAGCAAAAAGCAGAAAAGTGAAGAA
AAGGAAATTCAGCTCGTTATGACAGCGATGGTGAGAAAAGTGTGACAACCTGGTGGTTGACGTTTCC
AATGAGGATCCATCTTCCCCTCGAGGGAGCCAGCACATTCCCCCAGAGAGAATGGCCTAGACAAGACA
CGCCTGCTCAAGAAAGATGCCCGATTAGTCCAGCCTCTATTGCATCTTCCAGCAGTACTCCCTCTCC
AAATCAAAGAAGTTCAGCTTAATGAAAAATCTACTACTCCCGTCTCAAAGTCCAATACCCCTACTCCA
CGAAGTGTGCGCCACCCAGGCAGTAACTCTACTCCCGATTGAGGCCTGTACCTGGAAGAACACCA
GGAGTTGACCCCTTGGCCCTCAAGCCTAAGGACCCCAATGGCAGTACCTTGTCCATATCCAACCTCATT
GGGATTGTGCCCATGCTGGAATGAACGGAGAGCTGACCAGCCCCGGAGCGGCCACGCTGGGCTCCAC
AACATCTCCCCTCAGATGAGCGCAGCTGCTGCCGCCGCCGCTGCTGCTGCCTATGGGAGATACCA
GTGGTGGGATTTGATCCACACCATCACATGCGTGTGCCAGCAATACCTCCAAACCTGACAGGCATTCCA
GGAGGAAAACAGCATACTCCTTCCATGTTAGCGCAGATGGTCAGATGCAGCCTGTCCCTTTTCCACCC
GACGCCCTCATCGGACCTGGAATCCCCCGCATGCTCGCCAGATCAACACCCTCAACCACGGGGAGGTG
GTGTGCGCGGTGACCATCAGCAACCCACGAGACACGTGTACACGGGTGGGAAGGGCTGCGTCAAGGTC
TGGGACATCAGCCACCCAGGCAATAAGAGTCTGTCTCCAGCTCGACTGTCTGAACAGGGATAACTAC
ATCCGTTTCTGCAGATTGCTCCCTGATGGTGCACCCTAATTGTTGGAGGGGAAGCCAGTACTTTGTCC
ATTTGGGACCTGGCGGCTCCAACCCACGCATCAAGGCAGAGCTGACATCCTCGGCCCCCGCTGCTAT
GCCCTGGCCATCAGCCCCGATTCCAAGGTCTGCTTCTCATGCTGCAGCGACGGCAACATCGCTGTGTGG
GATCTGCACAACAGACCTTGGTGAAGCAATCCAGGGCCACACAGATGGAGCCAGCTGTATTGACATT
TCTAATGATGGCACAAGCTCTGGACAGGTGGTTTGGACAACACGGTCAGGTCTGGGACCTGCGCGAG
GGGCGGCAGCTGCAGCAGCAGACTTCACCTCCAGATCTTTTCTCTGGGCTACTGCCAACTGGAGAG
TGGCTTGCAGTGGGGATGGAGAACAGCAATGTGGAAGTTTGCATGTACCAAGCCAGACAAATACCAA
CTACATCTTCATGAGAGCTGTGTGCTGTGCTCAAGTTTGGCCATTGTGGCAAATGGTTTGAAGCACT
GGAAAGGACAACCTTCTGAATGCCTGGAGAACACCTTATGGGGCCAGTATATTCCAGTCCAAGAATCC
TCATCGGTGCTTAGCTGTGACATCTCCGTGGACGACAAATACATTGCTACTGGCTCTGGGGATAAGAAG
GCCACAGTTTATGAAGTTATTTAT
ACGCGTACGCGGCCGCTCGAG - GFP Tag - GTTTAAAC
```

Protein Sequence: >Peptide sequence encoded by RG239209
 Blue=ORF Red=Cloning site Green=Tag(s)

MAELNAIIGQQLQAQHL SHGHGLPVPL TPHP SGLQPPAIPP IGS SAGLLALSSALGGQSHLP IKDEKKH
 HDNDHQDRDRIKSSSVSPSASF RGA EKH RNSADYSSSEK KQKTEEKEIAARYSDGEKSDDNLVVDVS
 NEDPSSPRGSPAHS PRENL DKTRLLK KDAPISPA SIASSSTPSKSKELSLNEKSTTPVSKSNTPTP
 RTDAPTPGSNSTPGLRPVPGKPPGVDPLASSLRTPMAVPCPYPTPF GIVPHAGMNGELTPGAAYAGLH
 NISPQMSAAAAAAAAAAYGRSPVVGDFPHHMRVPAIPP NLTGIPGGKPAYSFHVSADGMQPVFPFP
 DALIGPGIPRHARQINTLNHGEV VCAVTISNPTRHVYTGKGKCVKVDI SHPGNKSPVSQLDCLNRDNY
 IRSCRLLPDGRTLIVGGEASTLSIWDLAAPT PRIKAELTSSAPACYALAI SPDSKVCFSCCSDGNI AVW
 DLHNQTLVR FQGH TDGASCIDISNDGTLWTGGLDNTVRSWDLREGRQLQ QHDFTSQIFSLGYCPTGE
 WLA VGMENSNVEVLHVTKPKYQLHLHESC VLSLKF AHC GKWFVSTGKDNLLNAWRTPYGASIFQSKES
 SSVLSCDISVDDKYIVTGS GDKKATVYEV IY
 TRTRPLEMESDE SGLPAMEIECRITGTLNGVEFELVGGGEGTPEQGRMTNKMKSTKGALTFSPYLLSHV
 MGYGFYHFGTYP SGYENPFLHAINNGGYNTRIEKYEDGGVLHVSFSYRYEAGRVIGDFKVMGTGFPE D
 SVIFTDKIIRS NATVEHLHPMGDNDLDGSFTRTFLRDGGYSSVVD SHMHFKSAIHP SILQNGGPMFA
 FRRVEEDHSNTELGIVEYQHAFKTPDADAGEERV

Restriction Sites: SgfI-MluI

Cloning Scheme:



ACCN: NM_001282760

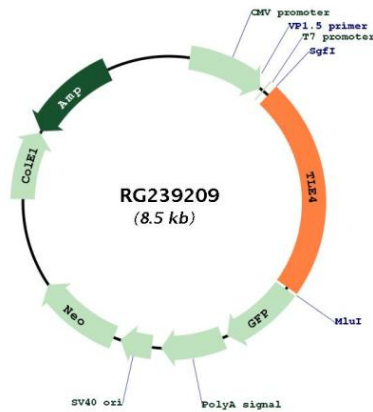
ORF Size: 1956 bp

OTI Disclaimer: The molecular sequence of this clone aligns with the gene accession number as a point of reference only. However, individual transcript sequences of the same gene can differ through naturally occurring variations (e.g. polymorphisms), each with its own valid existence. This clone is substantially in agreement with the reference, but a complete review of all prevailing variants is recommended prior to use. [More info](#)

OTI Annotation: This clone was engineered to express the complete ORF with an expression tag. Expression varies depending on the nature of the gene.

| | |
|--------------------------|---|
| Components: | The ORF clone is ion-exchange column purified and shipped in a 2D barcoded Matrix tube containing 10ug of transfection-ready, dried plasmid DNA (reconstitute with 100 ul of water). |
| RefSeq: | <u>NM_001282760.1, NP_001269689.1</u> |
| RefSeq Size: | 5173 bp |
| RefSeq ORF: | 1959 bp |
| Locus ID: | 7091 |
| Cytogenetics: | 9q21.31 |
| Protein Families: | Transcription Factors |
| MW: | 69.9 kDa |
| Gene Summary: | Transcriptional corepressor that binds to a number of transcription factors. Inhibits the transcriptional activation mediated by PAX5, and by CTNNB1 and TCF family members in Wnt signaling. The effects of full-length TLE family members may be modulated by association with dominant-negative AES. Essential for the transcriptional repressor activity of SIX3 during retina and lens development and for SIX3 transcriptional auto-repression (By similarity). [UniProtKB/Swiss-Prot Function] |

Product images:



Circular map for RG239209