

## Product datasheet for **RG239208**

### **ANKLE1 (NM\_001278444) Human Tagged ORF Clone**

#### **Product data:**

Product Type:	Expression Plasmids
Product Name:	ANKLE1 (NM_001278444) Human Tagged ORF Clone
Tag:	TurboGFP
Symbol:	ANKLE1
Synonyms:	ANKRD41; LEM3; LEMD6
Mammalian Cell Selection:	Neomycin
Vector:	pCMV6-AC-GFP (PS100010)
E. coli Selection:	Ampicillin (100 ug/mL)



[View online »](#)

**ORF Nucleotide Sequence:**

>RG239208 representing NM\_001278444.  
 Blue=ORF Red=Cloning site Green=Tag(s)

```

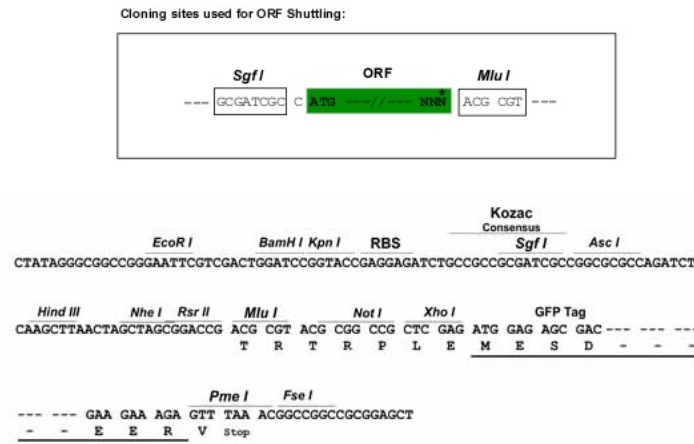
GCTCGTTTAGTGAACCGTCAGAATTTTGTAAACGACTCACTATAGGGCGGCCGGGAATTCGTGACTG
GATCCGGTACCGAGGAGATCTGCCGCCACGATCGCC
ATGTGGACCCCGTTCGGCGCGGGGACGCTGGCTGGAAACCCTGCTCGGCCCTGGAGAGGGGCCCCCC
GAGCCGAGGGGAGGAGCGGCGCATGCCACAAGCCCCCGGGGAAGTAGGAAATCGACCGACCAGGCG
GTGCGCTTCGGACCCAGCCAGGGCATGTGCTCGGAGGCCCGCTGGCTCGCAGGTTGCGGGATGCGCTG
CGGAGGAGGAGCCGTGGGCAGTAGAGGAGCTGCTGCGCTGCGGCGCGGACCCTAATTTGGTGTAGAG
GACGGCGCAGCGGCTGTGCACTTGGCGGCCGAGCCCGCACCCGCGCGGCTGCGTTGCTCGGGGCC
CTACTGCGCAAGCGGGGACCCCAACGCTCGATCTGTCGAGGCACTGACGCCGCTGCATGTGGCCGCC
GCGTGGGGCTGCCCGCGGCTGGAGCTGCTGCTGAGCCAAGGAGCGGACCCGCGCTGCGCGACCAG
GACGGACTCCGGCCGCTGGACCTGGCCCTGCAGCAGGGACACCTGGAGTGCAGCGGAGTCTGCAGGAT
CTCGACACGCGGACCAGGACCCGACCCGGATCGGGGACAGACTCAGGAGCCCGAGCCTGCACCTGGC
ACCCAGGCCCTCTTGGACCTACCGATGAGACGCTGGACTCCATAGCACTCCAAAAGCAGCCATGCAGA
GGTGACAACAGGGACATTGGCTTGGAGGCTGACCCAGGACCCCGAGCCTCCCTGTTCCCTTGAAGT
GTGGACAAACATGGGAGCTCGGCGTCCCTCCAGGGCACTGGGATTACAGCTCAGACGCCTCTTTCGTC
ACAGCGTTGAGGTCTCTGGAGCTGAGGACCCAGCCTCGGACACTCCCCCTGGGCTGGGTATTGCCA
CCGACCAGGCAGGGACTTCTGCATGTTGTCCATGCCAACCAGAGGGTACCTAGGTCTCAGGGCACGGAG
GCAGAAGTGAATGCCGCTGTCAGGCCCTGACTCTGACCCACCAAAATGCTGCTGGCTTCCAGTCTCC
CCTTCTCCATGCCTCTCCTGGACAGGAGTCCAGCTCATAGCCCCCACGGACACCAACCCTGGAGCT
TCTGACTGCCACTGCCTGTGGGAGCACCAGACATCCATTGATAGTGACATGGCCACGCTCTGGCTGACA
GAGGATGAGGCAAGCTCTACAGGTGGCAGGGAACCTGTCGGCCCTTGGCGGACCTGCCAGTCTCCACT
GTGTCTGACTTGGAGTTGCTGAAGGACTCCGAGCACTTGGCCAGAGTTTTTCAGGGCACAGCCTAGAA
CTGGCTGCAGCCCTGCGGACGGCTGTATTCCAGATGTCCAGGCAGATGAAGACGCGCTGGCCAGCAG
TTTGAGCAGCCAGATCCTGCCAGGAGGTGGCGGGAGGGGTGCTGAAGTCTAGCTTACCTATCTGCTG
CTGGACCCAGGGAGACTCAGGACCTGCCAGCCGAGCCTTCTACTGACCCAGCTGAGCGCCTCAG
ACTTTCATCCGTGCCATCTTCTACGTGGGCAAAGGACGAGGGCCCGCCATATGTCCACCTCTGGGAG
GCCCTTGGTCACCATGGGCGGTCAAGAAAACAGGGATCCAGACGCTCACCAACCAGAAGCAAGGGCACT
GCTATGGAGTGGTGGCAGGCTGGCCACCTGCTCGTCGCCGCGCTTGGGGTGCACCTGCTGCACCGTG
CCCTCCTTGTCTTCTGGCTGAAGGCGAGCGACAGCTTATCCCCAGGACATCCAGGCCCGGGGCTGAG
TGCTGGGGAGTTGGCCATCCAGCCTGGGAGAAATGTTTGAATGTTCCAGCTGCCCATGCTGACAGCA
GCCCCATCTCTGTTTCAAGGGGTGTGTGTGTGTGTGTGTGTGTGTGTGTGTGTGTGTGTGTGTGTG
ACCGGTACGCGGCCGCTCGAG - GFP Tag - GTTAAAC
  
```

**Protein Sequence:** >Peptide sequence encoded by RG239208  
 Blue=ORF Red=Cloning site Green=Tag(s)

MWTPVRRGAAWLGTLLGPGEPPPEPRGGAHAHKPPAGSRKSTDQAVRFGPSQGMCEARLARLRDAL  
 REEEPWAVEELLRCGADPNLVLEDGAAAVHLAAGARHPRGLRCLGALLRQGGDPNARSVEALTPLHVAA  
 AWGCRRLLELLSQGADPALRDQDLRPLDLALQQGHLECARVLQDLDRTRTRTRIGAETQEPEPAPG  
 TPGLSGPTDETLDSIALQKQPCRGDNRDIGLEADPGPPSLVPLETVDKHGSSASPPGHWDYSSDASV  
 TAVEVSGAEDPASDTPPWAGSLPPTRQGLLHVHVNQRVPRSQGTAEELNARLQALTLTPNAAGFQSS  
 PSSMPLLDLRSPAHSPPRTPTPGASDCHCLWEHQTSIDSDMATLWLTEDEASSTGGREPVGCRHLPVST  
 VSDLELLKGLRALGPEFSGHSLELAAALRTGCIPDVQADEDALAQFEQDPARRWREGVYKSSFTYLL  
 LDPRETQDLPARAFSLTPAERLQTFIRAIFYVKGTRARPYVHLWEALGHHGRSRKQGSRRSPTRSKGT  
 AMEWWQAGHLLVAGAWGCTCCTVPSLSSWLKASDSFIPRTSRPGAECWGVGHPAWGEMFECSSCPMLTA  
 API SGFRRGVCVCVCVCVCVCVCLCVCVCV  
**TRTRPLEMESDEGLPAMEIECRITGTLNGVEFELVGGEGTPEQGRMTNKMSTKGALTFSPYLLSHV**  
 MGYGFYHFGTYPSTYENPFLHAINNGYTNTRIEKYEDGGVLHVSFSYRYEAGRVIGDFKVMGTGFPED  
 SVIFTDKIIRSNAIVEHLHPMGDNDLDGSFTRTFSLRDGGYSSVVDSHMHFKSAIHP SILQNGGPMFA  
 FRRVEEDHSNTELGIVEYQHAFKTPDADAGEERV

**Restriction Sites:** SgfI-MluI

**Cloning Scheme:**



**ACCN:** NM\_001278444

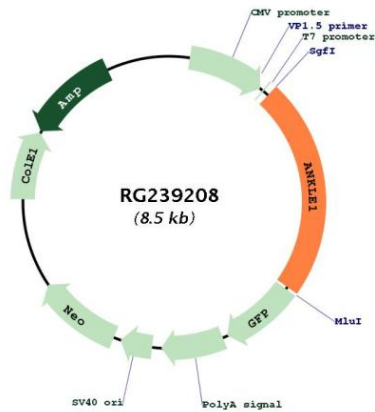
**ORF Size:** 1953 bp

**OTI Disclaimer:** The molecular sequence of this clone aligns with the gene accession number as a point of reference only. However, individual transcript sequences of the same gene can differ through naturally occurring variations (e.g. polymorphisms), each with its own valid existence. This clone is substantially in agreement with the reference, but a complete review of all prevailing variants is recommended prior to use. [More info](#)

**OTI Annotation:** This clone was engineered to express the complete ORF with an expression tag. Expression varies depending on the nature of the gene.

<b>Components:</b>	The ORF clone is ion-exchange column purified and shipped in a 2D barcoded Matrix tube containing 10ug of transfection-ready, dried plasmid DNA (reconstitute with 100 ul of water).
<b>RefSeq:</b>	<u>NM_001278444.1, NP_001265373.1</u>
<b>RefSeq Size:</b>	3001 bp
<b>RefSeq ORF:</b>	1794 bp
<b>Locus ID:</b>	126549
<b>Cytogenetics:</b>	19p13.11
<b>MW:</b>	70.2 kDa
<b>Gene Summary:</b>	Endonuclease that probably plays a role in the DNA damage response and DNA repair. [UniProtKB/Swiss-Prot Function]

**Product images:**



Circular map for RG239208