

Product datasheet for **RG239207**

FAM120A (NM_001286723) Human Tagged ORF Clone

Product data:

Product Type:	Expression Plasmids
Product Name:	FAM120A (NM_001286723) Human Tagged ORF Clone
Tag:	TurboGFP
Symbol:	FAM120A
Synonyms:	C9orf10; HBVPTPAP; OSSA
Mammalian Cell Selection:	Neomycin
Vector:	pCMV6-AC-GFP (PS100010)
E. coli Selection:	Ampicillin (100 ug/mL)



[View online »](#)

ORF Nucleotide Sequence:

>RG239207 representing NM_001286723.
 Blue=ORF Red=Cloning site Green=Tag(s)

```
GCTCGTTTAGTGAACCGTCAGAATTTTGTAAACGACTCACTATAGGGCGGCCGGGAATTCGTGACTG
GATCCGGTACCGAGGAGATCTGCCGCCACGATCGCC
ATGGGCGTGCAGGGCTTCAGGACTACATCGAGAAGCACTGCCCGAGCGCCGTGGTGCCGGTGGAGCTG
CAGAAGCTGGCCCGGGCAGCCTGGTGGCGGGCGGCAGCGCCCCCGCAGACCCCGCTGCGCCTG
CTGGTGGACGCCGACAACCTGCCTGCACCCGCTCTACGGCGGCTTCTACACCGACTGGGTACAGCGCGGC
CAGTGGAAACCACATGCTTGGCTACCTGGCGGCGCTGGCCAAGGCCTGCTTCGGCGGCAACATCGAGCTC
TTCGTCTTCTTCAACGGCGCGCTCGAGAAGGCCGGCTGCACGAGTGGTCAAGCGGCAGGGCAACGAG
CGCCAGACGGCACAGCAGATCGTCAGCCATGTCCAGAACAAGGGCACCCCGCCGCAAAGGTCTGGTTC
CTGCCGCCGTGTCATGGCCACTGCATCCGCTGGCGCTCATCCGCTTCCACGTCAAGGTTGCACAG
AGCATTGAGGATCACCATCAGGAAGTATTGGTTTCTGCAGAGAGAATGGTTTCCATGGCTTGGTTGCG
TATGACTCTGATTATGCACTGTGCAACATCCCCTACTATTTCAAGTCCCATGCCCTAAAAGTGAAGCCG
AACGGGAAAAGTCTCACCACAAGCAATATCTGATGCATGAAGTTGCCAAGCAACTGGACCTGAATCCA
AATCGTTTTCTATTTTTGCTGCTCTTAGGAAATCACATTCTGCCTGATGAAGATCTGGCTTCCCTT
CACTGGAGTTTACTTGGTCCAGAACATCCACTAGCCTCACTAAAGTCCGGGCCACCAGCTGGTCTTG
CCACCTTGCAGCTAGTGATCAAAGCCGTTGCTGACTATGTACGCAACATTACAGGACACCTGACTTG
GATGCCATAGCTAAAGATGTTTTCCAGCATTACAGTCTAGAACAGATGACAAAGTTATTCGATTTAAG
AGAGCAATTGGATATTATTCAGCGACTAGTAAGCCTATGTCATTTCCATCCACCACATTACTTAGCAGCC
AGACCCGGTCCGTTTGAATGCCTGGGATGGTGGCCCGCATGTTCTCCTCAGATGCTCAACATTCCG
CAGACCTCTCTGCAAGCAAAGCCCGTGGCCCCACAGGTGCCAGCCAGGGGGCGCCCCGGGCCAGGGT
CCATACCCGTACAGCCTCTCTGAGCCAGCACCTCTCACTTTGGACACGAGCGGGAAGAATCTGACGGAG
CAGAACAGCTACAGCAACATTCTCACGAAGGAAGCACACGCCGCTGTATGAGCGGTCTCGCCATC
AACCCGGCCAGAGCGGAGCCCAACACGTGGATTCCGCTACTTCCCTGGCTCTTCTACATCGTCA
TCTTCCGACAACGACGAGGGCAGCGGAGGGGCGACAAACCATATCAGCGGGAACAAGATTGGCTGGGAG
AAGACGGGAAGCCACTCAGAGCCTCAGGCACGAGGAGACCCAGGAGACCAAAACAAGGCAGAAGGCTCG
TCCACTGCCTCTCAGGAAGCCAACTAGCCGAAGGCAAGGGAAGCCAGATGGGCACTGTCCAGCCAATC
CCGTGCCTCCTGTCGATGCCACCAGGAACCACATGGACATCACACACCTCCCCTGCCCCCGTCGCA
CCTGAGGTGCTGAGAGTGGCCGAGCACAGGCACAAGAAGGGGCTGATGTACCCCTACATCTTCCATGTC
CTGACGAAGGGTAAAATCAAATTTGCTGTTTCTATTGAAGATGAAGCCAACAAGGACCTGCCTCCGGCC
GCTCTGCTCTATAGGCCAGTTCTGTCAGTATGTTTACGGAGTCTGTTTAGTTTGGCAGAAAGCAGAAAG
AAAAGTGAAGACTTGCTTTTAGAAAGAACAGACTTCCACCAGAATGTATGTACTGTAACATCCATTG
TTTGTCTTCTCGGTACCTCG
ACGCGTACGCGGCCGCTCGAG - GFP Tag - GTTTAAAC
```

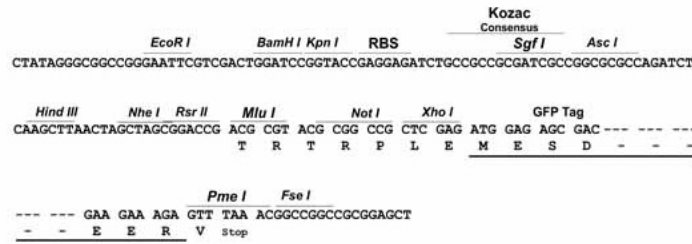
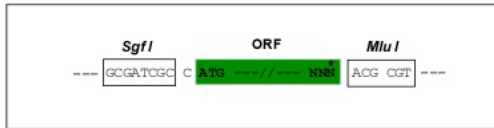
Protein Sequence: >Peptide sequence encoded by RG239207
 Blue=ORF Red=Cloning site Green=Tag(s)

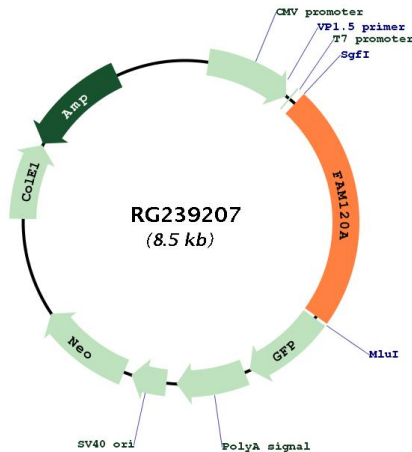
MGVQGFQDYIEKHCPASVVPVELQKLARGSLVGGGRQRPPTPLRLLVDADNCLHRLYGGFYTDWVSGG
 QWNHMLGYLAALAKACFGGNIELFVFFNGALEKARLHEWVKRQGNERQTAQQIVSHVQNKGTPPPKVWF
 LPPVCMACHCIRLALIRFHVKVAQSIEDHHQEVIGFCRENGFHGLVAYDSYALCNIPYYFSAHALKLSR
 NGKSLTTSQYLMHEVAKQLDLNPNRFPIFAALLGNHILPDEDLASFHWSLLGPEHPLASLKVRAHQQLVL
 PPCDVVIAKAVADYVRNIQDTSDLDAIAKDVVFQHSQSRDQKIVIRFKRAIGYYSATSKPMSFHPPHYLAA
 RPGPFGMPGMVPPHVPQMLNIPQTSLQAKPVAPQVPSGGAPGQGPYPYSLSEPAPLTLDTSGKNLTE
 QNSYSNIPHEGKHTPLYERSSPINPAQSGSPNHVDSAYFPGSSTSSSSDNDESGGATNHSIGNKIGWE
 KTGSHSEPPQARGDPGDQTKAEGSSTASSGSQLAEGKGSQMGTVQPIPCLLSMPTRNHMDITPPLPPVA
 PEVLRVAEHRHKKGLMYPYIFHVLTKGEIKIAVSIEDEANKDLPPAALLYRQVRYVYGVLFSLAESRK
 KTERLAFRKNRLLPECMYCNNPLFVFLGTS
 TRTRPLEMESDESGLPAMEIECRITGTLNGVEFELVGGEGTPEQGRMTNKMKSTKGALTFSPYLLSHV
 MGYGFYHFGTYPSTYENPFLHAINNGGYNTRIEKYEDGGVLHVSFSYRYEAGRVIGDFKVMGTGFPED
 SVIFTDKIIRSNTAVEHLHPMGDNDLDGSFTRTSLRDGGYSSVVDSHMHFKSAIHPSILQNGGPMFA
 FRRVEEDHSNTELGIVEYQHAFKTPDADAGEERV

Restriction Sites: SgfI-MluI

Cloning Scheme:

Cloning sites used for ORF Shuttling:



Plasmid Map:


ACCN:	NM_001286723
ORF Size:	1953 bp
OTI Disclaimer:	The molecular sequence of this clone aligns with the gene accession number as a point of reference only. However, individual transcript sequences of the same gene can differ through naturally occurring variations (e.g. polymorphisms), each with its own valid existence. This clone is substantially in agreement with the reference, but a complete review of all prevailing variants is recommended prior to use. More info
OTI Annotation:	This clone was engineered to express the complete ORF with an expression tag. Expression varies depending on the nature of the gene.
Components:	The ORF clone is ion-exchange column purified and shipped in a 2D barcoded Matrix tube containing 10ug of transfection-ready, dried plasmid DNA (reconstitute with 100 ul of water).
RefSeq:	NM_001286723.1 , NP_001273652.1
RefSeq Size:	2418 bp
RefSeq ORF:	1956 bp
Locus ID:	23196
UniProt ID:	Q9NZB2
Cytogenetics:	9q22.31
MW:	72 kDa

Gene Summary:

May participate in mRNA transport in the cytoplasm (By similarity). Critical component of the oxidative stress-induced survival signaling. Activates src family kinases and acts as a scaffolding protein enabling src family kinases to phosphorylate and activate PI3-kinase. Binds RNA and promotes the secretion of IGF-II. May play a pivotal role in the progression of scirrhou-type gastric cancer by supporting cancer cell survival in environments with various oxidative stresses.[UniProtKB/Swiss-Prot Function]