

Product datasheet for **RG239206**

SLC26A6 (NM_001281733) Human Tagged ORF Clone

Product data:

Product Type:	Expression Plasmids
Product Name:	SLC26A6 (NM_001281733) Human Tagged ORF Clone
Tag:	TurboGFP
Symbol:	SLC26A6
Mammalian Cell Selection:	Neomycin
Vector:	pCMV6-AC-GFP (PS100010)
E. coli Selection:	Ampicillin (100 ug/mL)



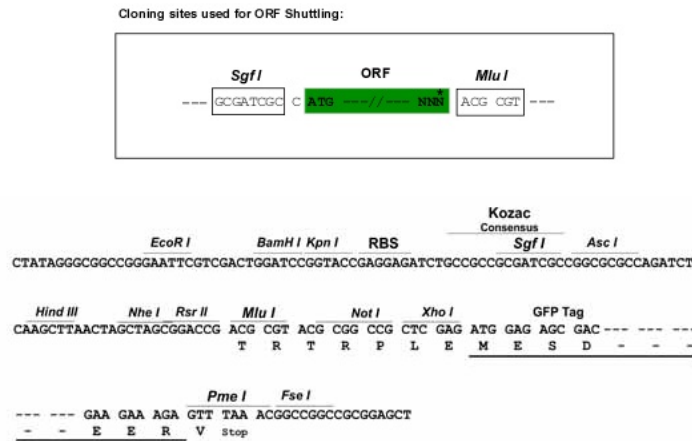
[View online »](#)

Protein Sequence: >Peptide sequence encoded by RG239206
 Blue=ORF Red=Cloning site Green=Tag(s)

MGLADASGPRDQTQALLSATQAMDLRRRDYHMERPLLNQEHLEELGRWGSAPRTHQWRTWLQCSRARAYA
 LLLQHLVVLVWLPYPRVDWLLGDLLSGLSVAIMQLPQGLAYALLAGLPPVFGLYSSFYFVFIYFLFGT
 SRHISVLEVCWKLPQSKVGTVVTAAVAGVVLVVKLLNDKLLQQQLPMPVIGELLTLIGATGISYGMGL
 KHRFEVDVVGNIPAGLPPVPAPNTQLFSKLVGSAFTIAVVGFAIAISLGIKIFALRHGYRVDNQELVAL
 GLSNLIGGIFQCFPVSCMSRSLVQESTGNSQVAGAISSLFILLIIVKLGELFHDLPKAVLAAIIIVN
 LKGLRQLSDMRSLWKANRADLLIWLVTFTATILLNLDLGLVVAVIFSLLLVVVVRTQMPHYSVLGGQVPD
 TDIYRDVAEYSEAKEVRGVKVFRRSATVYFANAEFYSDALKQRCGVDFLISQKKLLKKQEQLKQ
 LQKEEKLKQAAAPKASVSINVTSLQEDMRSNNVEDCKMMVSSGDKMEDATANGQEDSKAPDGLKKA
 LGLPQPDFHSLILDGALSFVDTVCLKSLKNIFHDFREIEVEVYMAACHSPVVSQLEAGHFFDASITKK
 HLFASVHDAVTFALQHPRPVPDPSVSVTRL
 TRTRPLEMESDESGLPAMEIECRITGTLNGVEFELVGGEGTPEQGRMTNKMKSTKGALTFSPYLLSHV
 MGYGFYHFGTYPSTYENPFLHAINNGGYNTRIEKYEDGGVLHVSFSYRYEAGRVIGDFKVMGTGFPED
 SVIFTDKIIRSNAIVEHLHPMGDNDLDGSFTRTFLRDGGYSSVVDSHMHFKSAIHPISILQNGGPMFA
 FRRVEEDHSNTELGIVEYQHAFKTPDADAGEERV

Restriction Sites: SgfI-MluI

Cloning Scheme:



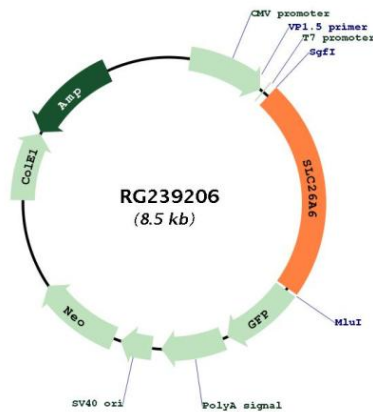
ACCN: NM_001281733

ORF Size: 1953 bp

OTI Disclaimer: The molecular sequence of this clone aligns with the gene accession number as a point of reference only. However, individual transcript sequences of the same gene can differ through naturally occurring variations (e.g. polymorphisms), each with its own valid existence. This clone is substantially in agreement with the reference, but a complete review of all prevailing variants is recommended prior to use. [More info](#)

OTI Annotation: This clone was engineered to express the complete ORF with an expression tag. Expression varies depending on the nature of the gene.

Components:	The ORF clone is ion-exchange column purified and shipped in a 2D barcoded Matrix tube containing 10ug of transfection-ready, dried plasmid DNA (reconstitute with 100 ul of water).
RefSeq:	<u>NM_001281733.2</u>
RefSeq Size:	2338 bp
RefSeq ORF:	1956 bp
Locus ID:	65010
UniProt ID:	<u>Q9BXS9</u>
Cytogenetics:	3p21.31
Protein Families:	Transmembrane
MW:	72 kDa
Gene Summary:	This gene belongs to the solute carrier 26 family, whose members encode anion transporter proteins. This particular family member encodes a protein involved in transporting chloride, oxalate, sulfate and bicarbonate. Alternatively spliced transcript variants encoding distinct isoforms have been described. [provided by RefSeq, Aug 2013]

Product images:


Circular map for RG239206