

Product datasheet for **RG239203**

ITGB6 (NM_001282390) Human Tagged ORF Clone

Product data:

Product Type:	Expression Plasmids
Product Name:	ITGB6 (NM_001282390) Human Tagged ORF Clone
Tag:	TurboGFP
Symbol:	ITGB6
Synonyms:	A11H
Mammalian Cell Selection:	Neomycin
Vector:	pCMV6-AC-GFP (PS100010)
E. coli Selection:	Ampicillin (100 ug/mL)



[View online »](#)

ORF Nucleotide
Sequence:

>RG239203 representing NM_001282390.
Blue=ORF Red=Cloning site Green=Tag(s)

```
GCTCGTTAGTGAACCGTCAGAATTTTGTAAACGACTCACTATAGGGCGGCCGGGAATTCGTGACTG
GATCCGGTACCGAGGAGATCTGCCGCCACGATCGCC
ATGGACCTCTCCGCCTCCATGGATGACGACCTCAACACAATAAAGGAGCTGGGCTCCCGGCTTCCAAA
GAGATGTCTAAATTAACCAGCACTTTAGACTGGGCTTCGGATCTTTTGTGGAAAAACCTGTATCCCCT
TTTGTGAAAAACAACACCAGAAGAAATTGCCAACCTTGCAGTAGTATTCCATACTTCTGTTTACCTACA
TTTGGATTCAAGCACATTTTGCCATTGACAAATGATGCTGAAAGATTCAATGAAATTGTGAAGAATCAG
AAAATTTCTGCTAATATTGACACACCCGAAGGTGGATTTGATGCAATTATGCAAGCTGCTGTGTGAAG
GAAAAAATTTGGCTGGCGGAATGACTCCCTCCACCTCCTGGTCTTTGTGAGTGATGCTGATTCTCATTTT
GGAATGGACAGCAAACTAGCAGGCATCGTATTCTAATGACGGGCTCTGCTCACTTGACAGCAAGAAT
GAATACTCCATGTCAACTGTCTTGAATATCCAACAATTGGACAACCTATTGATAAACTGGTACAAAAC
AACGTGTTATTGATCTTCGCTGTAAACCAAGAACAAGTTCATTTATATGAGAATTACGCAAACTTATT
CCTGGAGCTACAGTAGGCTACTTCAGAAGGACTCCGGAACATTCTCCAGCTGATCATCTCAGCTTAT
GAAGAACTGCGGTCTGAGGTGGAAGTATTAGGAGACACTGAAGGACTCAACTTGTCAATTTACA
GCCATCTGTAACAACGGTACCCTCTTCCAACACCAAAAAGAAATGCTCTCATGAAAGTGGGAGACACA
GCTTCCTTCAGCGTGACTGTGAATATCCCACACTGCGAGAGAAGAAGCAGGCACATTATCATAAAGCCT
GTGGGGCTGGGGGATGCCCTGGAATTACTTGTGAGCCAGAAATGCAACTGCGACTGTGAGAAAGAAGTG
GAAGTGAACAGCTCCAAATGTCACCACGGGAACGGCTCTTCCAGTGTGGGGTGTGTGCCTGCCACCT
GGCCACATGGGGCCTCGCTGTGAGTGTGGCGAGGACATGCTGAGCACAGATTCTGCAAGGAGGCCCA
GATCATCCCTCCTGCAGCGGAAGGGGTGACTGCTACTGTGGCAGTGTATCTGCCACTTGTCTCCCTAT
GGAAACATTTATGGGCCTTATTGCCAGTGTGACAATTTCTCCTGCGTGAGACACAAGGGTGTCTGTC
GGAGGTAACGGCGACTGTGACTGTGGTGAATGTGTGTGAGGAGCGGCTGGACTGGCGAGTACTGCAAC
TGACCACCAGCACGGACTCCTGCGTCTCTGAAGATGGAGTGTCTGAGCGGGCGGGGACTGTGTT
TGTGGCAAGTGTGTTGCACAAACCTGGAGCCTCAGGACCAACCTGTGAACGATGCTCTACCTGTGGT
GACCCCTGTAACCTAAACGGAGCTGCATTGAGTGCCACCTGTCAGCAGCTGGCCAAGCCCGAGAAGAA
TGTGTGGACAAGTGAACTAGCTGGTGCACCATCAGTGAAGAAGAAGATTTCTCAAAGGATGTTTCT
GTTTCTGCTCTGCAAGGAGAAAATGAATGTCTTATTACATTCCTAATAACTACAGATAATGAGGGG
AAAACCATCATTACAGCATCAATGAAAAAGATTGTCCGAAGCCTCCAAACATTTCCATGATCATGTTA
GGGGTTTCCCTGGCTATTCTTCTCATCGGGTTGTCTACTGTGCATCTGGAAGCTACTGGTGTCAATTT
CATGATCGTAAAGAAGTTGCCAAATTTGAAGCAGAACGATCAAAAAGCCAAGTGGCAAACGGGAACCAAT
CCTCTACAGAGGATCCACAAGTACTTTAAAAATGTACTTATAAACACAGGGAAAAACAAGGTA
GACCTTCCACAGATTGC
ACGCGTACGCGGCCGCTCGAG - GFP Tag - GTTTAAAC
```

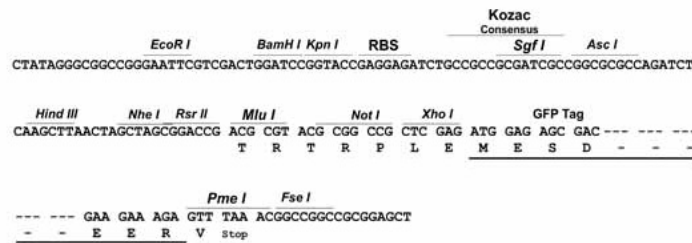
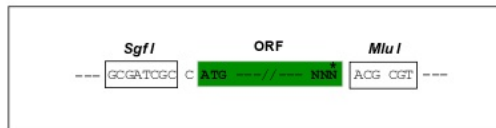
Protein Sequence: >Peptide sequence encoded by RG239203
 Blue=ORF Red=Cloning site Green=Tag(s)

MDLSASMDDDLNTIKELGSRLSKEMSKLTSNFRLGFGSFVEKPVSPFVKTTPEEIANPCSSIPYFCLPT
 FGFKHILPLTNDIAERFNEIVKNQKISANIDTPEGGFDAIMQAAVCKEKGWRNDSLHLLVFSVDADSHF
 GMSKLAGIVIPNDGLCHLDSKNEYSMSTVLEYPTIGQLIDKLQNNVLLIFAVTQEQVHLYENYAKLI
 PGATVGLLQKDSGNILQLIISAYEELRSEVELEVLGDTEGLNLSFTAICNNGTLFQHKKCSHMKVGD
 ASFSVTVNI PHCERRSRHII IKPVGLDALELLV SPECNDCQKEVEVNSKCHHGNSFQCGVACHP
 GHMGRPRCEGEDMLSTDSCKEAPDHPSCSGRGDCYCGQCICHLSPYGNIYGPYCQDNFSCVRHKGLLC
 GGNGDCDCGECVCRSGWTGEYCNTTSTDSCVSEGDVLCVSGRGDCVCGKCVCTNPGASGPTCERCPTCG
 DPCNSKRSCIECHLSAAGQAREECVDKCKLAGATISEEEDFSKDGVSVCSLQGENECLITFLITDNEG
 KTIHSINEKDCPKPPNIPMIMLGVSLAILLIGVLLLCIWKLLVSFHDRKEVAKFEAERSKAKWQTGN
 PLYRGSTSTFKNVTYKHREKQKVDLSTDC
 TRTRPLEMESDEGLPAMEIECRITGTLNGVEFELVGGEGTPEQGRMTNKMSTKGALTFSPYLLSHV
 MGYGFYHFGTYPSTYENPFLHAINNGGYTNTRIEKYEDGGVLHVSFSYRYEAGRVIGDFKVMGTGFPED
 SVIFTDKIIRS NATVEHLHPMGDNDLDGSFTRTFLRDGGYYSSVVD SHMHFKSAIHP SILQNGGPMFA
 FRRVEEDHSNTELGIVEYQHAFKTPDADAGEERV

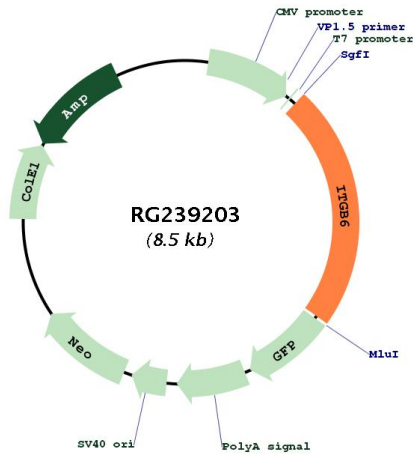
Restriction Sites: SgfI-MluI

Cloning Scheme:

Cloning sites used for ORF Shuttling:



Plasmid Map:



ACCN:	NM_001282390
ORF Size:	1950 bp
OTI Disclaimer:	The molecular sequence of this clone aligns with the gene accession number as a point of reference only. However, individual transcript sequences of the same gene can differ through naturally occurring variations (e.g. polymorphisms), each with its own valid existence. This clone is substantially in agreement with the reference, but a complete review of all prevailing variants is recommended prior to use. More info
OTI Annotation:	This clone was engineered to express the complete ORF with an expression tag. Expression varies depending on the nature of the gene.
Components:	The ORF clone is ion-exchange column purified and shipped in a 2D barcoded Matrix tube containing 10ug of transfection-ready, dried plasmid DNA (reconstitute with 100 ul of water).
RefSeq:	NM_001282390.2
RefSeq Size:	4440 bp
RefSeq ORF:	1953 bp
Locus ID:	3694
Cytogenetics:	2q24.2
Protein Families:	Druggable Genome, Transmembrane

Protein Pathways:	Arrhythmogenic right ventricular cardiomyopathy (ARVC), Dilated cardiomyopathy, ECM-receptor interaction, Focal adhesion, Hypertrophic cardiomyopathy (HCM), Regulation of actin cytoskeleton
MW:	71.3 kDa
Gene Summary:	This gene encodes a protein that is a member of the integrin superfamily. Members of this family are adhesion receptors that function in signaling from the extracellular matrix to the cell. Integrins are heterodimeric integral membrane proteins composed of an alpha chain and a beta chain. The encoded protein forms a dimer with an alpha v chain and this heterodimer can bind to ligands like fibronectin and transforming growth factor beta 1. Alternate splicing results in multiple transcript variants. [provided by RefSeq, Sep 2013]