

## Product datasheet for **RG239201**

### **MIRO1 (RHOT1) (NM\_001288754) Human Tagged ORF Clone**

#### **Product data:**

Product Type:	Expression Plasmids
Product Name:	MIRO1 (RHOT1) (NM_001288754) Human Tagged ORF Clone
Tag:	TurboGFP
Symbol:	MIRO1
Synonyms:	ARHT1; MIRO-1; MIRO1
Mammalian Cell Selection:	Neomycin
Vector:	pCMV6-AC-GFP (PS100010)
E. coli Selection:	Ampicillin (100 ug/mL)



[View online »](#)

**ORF Nucleotide Sequence:**

>RG239201 representing NM\_001288754.  
 Blue=ORF Red=Cloning site Green=Tag(s)

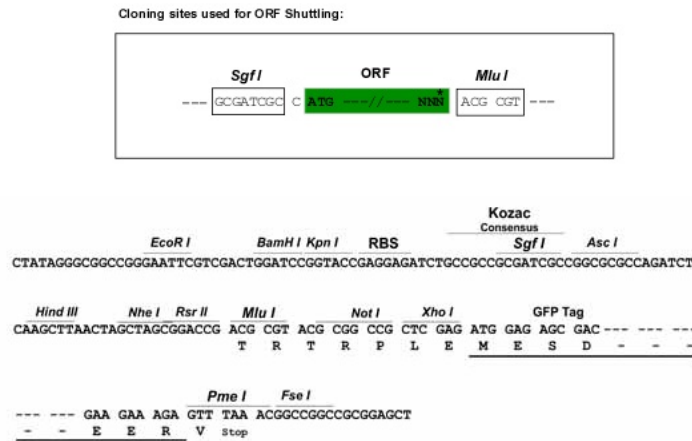
```
GCTCGTTTAGTGAACCGTCAGAATTTTGTAAATACGACTCACTATAGGGCGGCCGGGAATTCGTGACTG
GATCCGGTACCGAGGAGATCTGCCGCCACGATCGCC
ATGAAGAAAGACGTGCGGATCCTGCTGGTGGGAGAACCCTAGAGTTGGGAAGACATCACTGATTATGTCT
CTGGTCAGTGAAGAATTCACAGAGAGGTTCTCCCGGGCAGAAGAAATCACCATTCCAGCTGATGTC
ACCCAGAGAGAGTTCCACACACATTGTAGATTACTCAGAAGCAGAACAGAGTGATGAACAACATTCAT
CAAGAAATATCTCAGGCTAATGTCATCTGTATAGTGTATGCCGTTAACAACAAGCATTCTATTGATAAG
GTAACAAGTCGATGGATTCTCTCATAAATGAAAGAACAGACAAAGACAGCAGGCTGCCTTTAATATTG
GTTGGGAACAAATCTGATCTGGTGAATATAGTAGTATGGAGACCATCCTTCTATTATGAACCAGTAT
ACAGAAATAGAAACCTGTGTGGAGTGTTCAGCGAAAAACCTGAAGAACATATCAGAGCTCTTTTATTAC
GCACAGAAAGCTGTTCTTCATCTACAGGGCCCTGACTGCCAGAGGAGAAGGAGATGAAACCAGCT
TGTATAAAAGCCCTTACTCGTATATTTAAAATATCTGATCAAGATAATGATGGTACTCTCAATGATGCT
GAACTCAACTTCTTTCAGAGGATTTGTTTCAACTCCATTAGCTCCTCAAGCTCTGGAGGATGTCAAG
AATGTAGTCAGAAAACATATAAGTGATGGTGTGGCTGACAGTGGGTTGACCCTGAAAGGTTTTCTCTTT
TTACACACACTTTTTATCCAGAGAGGGAGACACGAAACTACTTGGACTGTGCTTCGACGATTTGGTTAT
GATGATGACCTGGATTTGACACCTGAATATTTGTTCCCCCTGCTGAAAATACCTCCTGATTGCACTACT
GAATTAATCATCATGCATATTTATTTCTCAAAGCACCTTTGACAAGCATGATTTGGATAGAGACTGT
GCTTTGTCACCTGATGAGCTTAAAGATTTTAAAGTTTTCCCTTACATACCTTGGGGGCCAGATGTG
AATAACACAGTTTGTACCAATGAAAGAGGCTGGATAACCTACCAGGATTCCTTTCCAGTGGACGCTC
ACGACTTATTTAGATGTACAGCGGTGCCTGGAATATTTGGGCTATCTAGGCTATTCATATTGACTGAG
CAAGAGTCTCAAGCTTCAGCTGTTACAGTGACAAGAGATAAAAAGATAGACCTGCAGAAAAACAACT
CAAAGAAATGTGTTCCAGATGTAATGTAATTGGAGTGAAAAACTGTGGAAAAGTGGAGTTCTTCAGGCT
CTTCTTGAAGAAACTTAATGAGGCAGAAGAAAATTCGTGAAGATCATAAATCCTACTATGCGATTAAC
ACTGTTTATGTATATGGACAAGAGAAAATACTTGTGTTGCATGATATCTCAGAATCGGAATTTCTAACT
GAAGCTGAAATCATTTGTGATGTTGATGCCTGGTATATGATGTCAGCAATCCCAAATCCTTTGAATAC
TGTGCCAGGATTTTAAAGCAACTTTATGGACAGCAGAATACCTTGCTTAATCGTAGCTGCAAAGTCA
GACCTGCATGAAGTTAAACAAGAATACAGTATTTACCTACTGATTTCTGCAGGAAACACAAAATGCCT
CCACCACAAGCCTTCACTTGCAATACTGCTGATGCCCCCAGTAAGGATATCTTTGTTAAATTGACAACA
ATGGCCATGTATCCAGAGGATCATTACAGAGACAGACTCTCCCGAGACATGGGCCACACTGATAGAATA
GAGAATTTGAGAAAAATCTGGGTCTTTCTAAAAACTGCTTGCACGTGACACAAGCTGACCTCAAGAGC
TCCACGTTTTGGCTTCGAGCAAGTTTTGGTGTACTGTTTTTGCAGTTTTGGGCTTTGCTATGTACAAA
GCATTATTGAAACAGCGA
ACGCGTACGCGGCCGCTCGAG - GFP Tag - GTTTAAAC
```

**Protein Sequence:** >Peptide sequence encoded by RG239201  
 Blue=ORF Red=Cloning site Green=Tag(s)

MKKDVRILLVGEPRVGKTSLIMSLVSEEFPEEVPRAEEITIPADVTPERVPTHIVDYSEAEQSDEQLH  
 QEISQANVICIVYAVNNKHSIDKVTSRWIPLINERTDKDSRLPLILVGNKSDLVEYSSMETILPIMNQY  
 TEIETCVCESAKNLKNISELFFYYAQKAVLHPTGPLYCPEEKEMKPACIKALTRIFKISDQDNDGTLNDA  
 ELNFFQRICFNTPLAPQALEDDVKNVVRKHISDGVADSGLTLKGFLLHTLFIQRGRHETTWTVLRFRFGY  
 DDDLDTPEYLFPLLKIPPDCTTELNHHAYLFLQSTFDKHDLDRCALSPDELKDLFKVFPYIPWGPDV  
 NNTVCTNERGWITYQGFLSQWTLTTYLDVQRCLYLGYLGYLSILTEQESQASAVTVTRDKKIDLQKKQT  
 QRNVFRCNVIGVKNCGKSGVLQALLGRNLMRQKKIREDHKSYYAINTVYVYGQEKYLLLDHDISESEFLT  
 EAEIICDVVCLYDVSNPKSFEYCARIKQHFMSRIPCLIVAASDLHEVKQEYSISPTDFCRKHKMP  
 PPQAFCTNTADAPSKDIFVKLTMMAMPEDHYDRRLSRDMGHTDRIENLRKIWVFLKTALHVTQADLKS  
 STFWLRASFGATVFAVLGFAMYKALLKQR  
 TRTRPLEMESDESGLPAMEIECRITGTLNGVEFELVGGEGTPEQGRMTNKMKSTKGALTFSPYLLSHV  
 MGYGFYHFGTYPSGYENPFLHAINNGGYTNTRIEKYEDGGVLHVSFSYRYEAGRVIGDFKVMGTGFPED  
 SVIFTDKIIRSNAIVEHLHPMGDNDLDGSFTRTFSLRDGGYSSVVDSHMHFKSAIHPISILQNGGPMFA  
 FRRVEEDHSNTELGIVEYQHAFKTPDADAGEERV

**Restriction Sites:** SgfI-MluI

**Cloning Scheme:**



**ACCN:** NM\_001288754

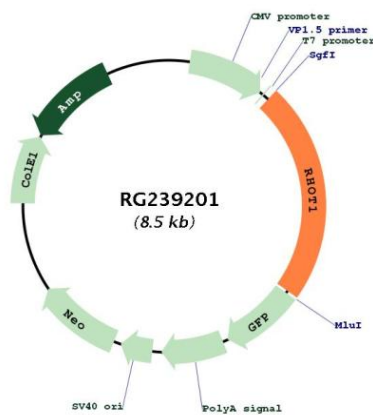
**ORF Size:** 1950 bp

**OTI Disclaimer:** The molecular sequence of this clone aligns with the gene accession number as a point of reference only. However, individual transcript sequences of the same gene can differ through naturally occurring variations (e.g. polymorphisms), each with its own valid existence. This clone is substantially in agreement with the reference, but a complete review of all prevailing variants is recommended prior to use. [More info](#)

**OTI Annotation:** This clone was engineered to express the complete ORF with an expression tag. Expression varies depending on the nature of the gene.

<b>Components:</b>	The ORF clone is ion-exchange column purified and shipped in a 2D barcoded Matrix tube containing 10ug of transfection-ready, dried plasmid DNA (reconstitute with 100 ul of water).
<b>RefSeq:</b>	<a href="#">NM_001288754.1</a> , <a href="#">NP_001275683.1</a>
<b>RefSeq Size:</b>	3236 bp
<b>RefSeq ORF:</b>	1953 bp
<b>Locus ID:</b>	55288
<b>UniProt ID:</b>	<a href="#">Q8IXI2</a>
<b>Cytogenetics:</b>	17q11.2
<b>Protein Families:</b>	Transmembrane
<b>MW:</b>	75.2 kDa
<b>Gene Summary:</b>	Mitochondrial GTPase involved in mitochondrial trafficking. Probably involved in control of anterograde transport of mitochondria and their subcellular distribution.[UniProtKB/Swiss-Prot Function]

### Product images:



Circular map for RG239201