

## Product datasheet for **RG239197**

### **ZNF202 (NM\_001301780) Human Tagged ORF Clone**

#### **Product data:**

Product Type:	Expression Plasmids
Product Name:	ZNF202 (NM_001301780) Human Tagged ORF Clone
Tag:	TurboGFP
Symbol:	ZNF202
Synonyms:	ZKSCAN10; ZSCAN42
Mammalian Cell Selection:	Neomycin
Vector:	pCMV6-AC-GFP (PS100010)
E. coli Selection:	Ampicillin (100 ug/mL)



[View online »](#)

**ORF Nucleotide  
Sequence:**

>RG239197 representing NM\_001301780.  
 Blue=ORF Red=Cloning site Green=Tag(s)

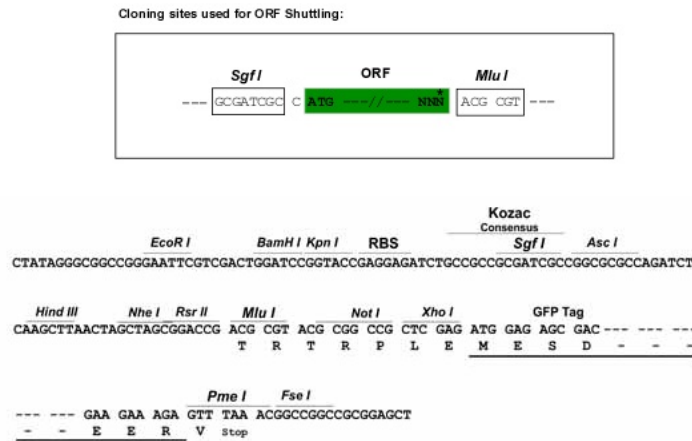
```
GCTCGTTTAGTGAACCGTCAGAATTTTGTAAACGACTCACTATAGGGCGGCCGGGAATTCGTGACTG
GATCCGGTACCGAGGAGATCTGCCGCCACGATCGCC
ATGGCTACAGCCGTGGAACAGAGGACCAGGATCTTTGGGAAGAAGAGGGAATTCTGATGGTGAACTG
GAAGATGATTTACCTGTCCGCCAGAGCTGTCTTACAGAGGGATGACCCGGTGTGGAACCTCCCAC
CAGAACTCCGACGCTTCCGCTACCAGGAGGCAGCAAGCCCTAGAGAAGCTCTCATCAGACTCCGAGAA
CTTTGTCAACAGTGGCTGAGACCAGAGAGCGGACAAAGGAGCAGATCCTAGAGCTGCTTGTGCTGGAA
CAATTTCTTACCCTCCTACCTGGAGAACTACAGAGCTGGGTGCGGGGCCAACGGCCAGAAAGTGGCGAG
GAGGCAGTGACGCTGGTGGAGGGTTTGCAGAAACAACCCAGGAGACCAAGCGGTGGGTGACTGTCCAT
GTTACGGCCAGGAAGTCTGTGAGAGGAGACGGTGCATTTAGGAGCGGAGCCTGAGTCACTAATGAG
CTGCAGGATCCTGTGCAAAGCTCGACCCCGAGCAGTCTCCTGAGGAAACCACACAGAGCCAGATCTG
GGGCACCGGCAGAGCAGCGTCCACACCAGGAAGAGGAGCTCCAGACCCTGCAGGAGAGCGAGGTCCA
GTCCCGAGGACCCAGACCTTCTGCAGAGAGGAGCTCTGGAGACTCAGAGATGGTTGCTCTTCTACT
GCTCTGTACAGGACTGGTAACGTTCAAGGATGTGGCCGTATGCTTTCCAGGACCAGTGGAGTGAT
CTGGACCAACACAGAAAGAGTTCTATGGAGAATATGTCTTGAAGAAGACTGTGGAATTGTTGTCTCT
CTGTCAATTTCAAATCCCCAGACCTGATGAGATCTCCAGGTTAGAGAGGAAGAGCCTTGGGTCCCAGAT
ATCCAAGAGCCTCAGGAGACTCAAGAGCCAGAAATCCTGAGTTTTACCTACACAGGAGATAGGAGTAAA
GATGAGGAAGAGTGTCTGGAGCAGGAAGATCTGAGTTTGGAGGATATACACAGGCCTGTTTTGGGAGAA
CCAGAAATTCACCAGACTCCAGATTGGGAAATAGTCTTTGAGGACAATCCAGGTAGACTTAATGAAAGA
AGATTTGGTACTAATATTTCTCAAGTGAATAGTTTTGTGAACCTTCGGGAAACTACACCCGTCACCCC
CTGTTAGGGAGGCATCATGACTGTTCTGTGTGGAAAGAGCTTCACTTGTAACTCCACCTTGTTAGA
CACCTGAGGACTCACACAGGAGAGAAACCCTATAAATGTATGGAATGTGGAAAAAGTTACACACGAAGC
TCACATCTTGCCAGGCACCAAAAGGTTACAAGATGAACGCGCCTTACAAATATCCCTAAACCGGAAG
AATTTGGAAGAGACCTCCCTGTGACACAGGCTGAGAGAATCCATCAGTGGAGAAACCCTATAGATGT
GATGATTGCGAAAGCACTTCCGCTGGACTTCAGACCTTGTGAGACATCAGAGGACACATACTGGAGAA
AAACCCTTCTTTGACTATTTGTGGCAAAAGCTTCAGCCAGAAATCTGTGTTAAACAACACACCAAAGA
ATCCACCTGGGAGGCAAAACCCTACTTGTGTGGAGAGTGTGGTGGAGACTTCAGTGAACACAGGCGGTAC
CTGGCGCACCGGAAGACGCACGCTGCTGAGGAACTCTACCTCTGCAGCGAGTGGGGCGCTGCTTACC
CACAGCGCAGCGTTCGCCAAGCACTTGAAGGACACGCCTCAGTGAAGCCCTGCCGATGCAACGAATGT
GGGAAGAGCTTCAGTCGACAGGACCACCTCGTCAGGCATCAGAGAACACACACTGGGGAGAAACCATTC
ACGTGCCCTACCTGTGAAAAAGCTTCAGCAGAGGATATCACTTAATTAGGCATCAGAGGACCCACTCA
GAAAAGACCTCC
ACGCGTACGCGGCCGCTCGAG – GFP Tag – GTTTAAAC
```

**Protein Sequence:** >Peptide sequence encoded by RG239197  
 Blue=ORF Red=Cloning site Green=Tag(s)

MATAVEPEDQDLWEEEGILMVKLEDDFTCRPESVLQRDDPVLETSHQNFRRFRYQEASPREALIRLRE  
 LCHQWLRPERRTKEQILELLVLEQFLTVPGLQSWVRGQRPESGEEAVTLVEGLQKQPRRPRRWVTVH  
 VHGEVLSSETVHLGAPEPSPNELQDPVQSSTPEQSPEETTQSPDLGAPAEQRPHQEEELQTLQESEVP  
 VPEDPDLPAERSSGDSEMVALLTALSQGLVTFKDVAVCFSQDQWSDLPTQKEFYGEYVLEEDCGIVVS  
 LSFPIPRPDEISQVREEEPWVPDIQEPQETQEPEILSFYTGDRSKDEEECLEQEDLSLEDIHRPVLGE  
 PEIHQTPDWEIVFEDNPGRLNERRFGTNI SQVNSFVNLRETTPVHPLLGRHHDCSVCGKSFTCNHSLVR  
 HLRHTHGEKPYKMECGKSYTRSSHLARHQVHKMNAPYKYLNRKNLEETSPVTQAERTPSVEKPYRC  
 DDCGKHFRTWSDLVRHQRTHTGEKPFCTICGKSFSQKSVLTTHQRIHLGGKPYLCEGCGEDFSEHRRY  
 LAHRKTHAAEELYLCECGRCFTHSAFAKHLRGHASVRCRCNECGKSFRRDHLVRHQRTHTGEKPF  
 TCPTCGKSF SRGYHLIRHQRTHTSEKTS  
 TRTRPLEMESDESGLPAMEIECRITGTLNGVEFELVGGGEGTPEQGRMTNKMSTKGALTFSPYLLSHV  
 MGYGFYHFGTYPGYPNPFLLHAINNGGYTNTRIEKYEDGGVLHVSFSYRYEAGRVIGDFKVMGTGFPED  
 SVIFTDKIIRS NATVEHLHPMGDNDLDGSFTRTFLRDGGYYSSVVD SHMHFKSAIHP SILQNGGPMFA  
 FRRVEEDHSNTELGIVEYQHAFKTPDADAGEERV

**Restriction Sites:** SgfI-MluI

**Cloning Scheme:**



**ACCN:** NM\_001301780

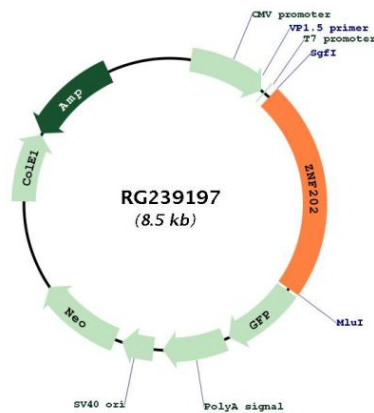
**ORF Size:** 1944 bp

**OTI Disclaimer:** The molecular sequence of this clone aligns with the gene accession number as a point of reference only. However, individual transcript sequences of the same gene can differ through naturally occurring variations (e.g. polymorphisms), each with its own valid existence. This clone is substantially in agreement with the reference, but a complete review of all prevailing variants is recommended prior to use. [More info](#)

**OTI Annotation:** This clone was engineered to express the complete ORF with an expression tag. Expression varies depending on the nature of the gene.

<b>Components:</b>	The ORF clone is ion-exchange column purified and shipped in a 2D barcoded Matrix tube containing 10ug of transfection-ready, dried plasmid DNA (reconstitute with 100 ul of water).
<b>RefSeq:</b>	<a href="#">NM_001301780.1</a> , <a href="#">NP_001288709.1</a>
<b>RefSeq Size:</b>	4249 bp
<b>RefSeq ORF:</b>	1947 bp
<b>Locus ID:</b>	7753
<b>UniProt ID:</b>	<a href="#">O95125</a>
<b>Cytogenetics:</b>	11q24.1
<b>Protein Families:</b>	Transcription Factors
<b>MW:</b>	74.7 kDa
<b>Gene Summary:</b>	Transcriptional repressor that binds to elements found predominantly in genes that participate in lipid metabolism. Among its targets are structural components of lipoprotein particles (apolipoproteins AIV, CIII, and E), enzymes involved in lipid processing (lipoprotein lipase, lecithin cholesteryl ester transferase), transporters involved in lipid homeostasis (ABCA1, ABCG1), and several genes involved in processes related to energy metabolism and vascular disease.[UniProtKB/Swiss-Prot Function]

**Product images:**



Circular map for RG239197