

Product datasheet for **RG239190**

EYA4 (NM_001301013) Human Tagged ORF Clone

Product data:

Product Type:	Expression Plasmids
Product Name:	EYA4 (NM_001301013) Human Tagged ORF Clone
Tag:	TurboGFP
Symbol:	EYA4
Synonyms:	CMD1J; DFNA10
Mammalian Cell Selection:	Neomycin
Vector:	pCMV6-AC-GFP (PS100010)
E. coli Selection:	Ampicillin (100 ug/mL)



[View online »](#)

ORF Nucleotide
Sequence:

>RG239190 representing NM_001301013.
Blue=ORF Red=Cloning site Green=Tag(s)

```
GCTCGTTTAGTGAACCGTCAGAATTTTGTAAACGACTCACTATAGGGCGGCCGGGAATTCGTGACTG
GATCCGGTACCGAGGAGATCTGCCGCCACGATCGCC
ATGGAAGACTCCAGGATTTAAATGAACAATCAGTAAAGAAAACGTGCACAGAATCAGATGTTTCACAA
TCTCAGAATCCAGGTCTATGGAATGCAGGACCTAGCAAGTCCCTACTCTTGTGGAGGTGGTGAT
ACTCCAGGTAGCTCCAACTGGAAAAATCTAATCTCAGCAGCACATCAGTTACTACAAATGGGACAGGA
GGGAAAAACATGACTGTTTTAAACACAGCAGACTGGTTGCTGAGTTGCAACACCCCTCTCTGCAACA
ATGTCTCTTCTGCAGTCAAAACAGAGCCCTTGAACAGCAGTGAACCACAGCCACGACTGGAGATGGA
GCGCTTGACACTTTACTGGGTGAGTAATTACAAGTAGTGGCTACAGCCCAGATCAGCACATCAGTAT
TCCCCACAGCTGTATCCTTCCAAGCCCTATCCACACATTTCTTCTACACCAGCAGCTCAAACAATGTCT
GCCTATGCAGGCCAGACTCAGTATTCGGGGATGCAGCAGCCAGCCGTCTACACAGCCTACTCACAGACA
GGACAGCCCTACAGCTTGCCACTTACGATTTGGGTGTGATGTTGCCAGCCATCAAGACAGAGAGTGGA
CTTTCCAAACTCAGTCCCATTACAGAGTGGCTGCCTCAGTTACAGCCCAGGGTCTCTACCCACAG
CCAGGCCAGACACTTATTCTTACCAAATGCCAGGTTCTAGTTTTGCACCATCATCTACTATTTATGCA
AATAATTCAGTTTCCAATTCAACGAATTTCAAGTGGTTCACAACAGGATTATCCATCCTATACAGCCTTT
GGCCAAAACAGTATGCACAGTATTATTAGCATCAACGTATGGAGCGTATATGACATCGAATAACACA
GCCGATGGCACACCCTCTTCAACCTCTACTTATCAGTTGCAGGAATCTCTCCAGGACTGACTAACCAA
CCAGGTACAGATCTTCAACCAGGAGAGTTCGATACCATGCAGAGTCCCTCCACACCCATCAAAGATCTT
GATGAGAGAACCCTGTAGGAGTTCGGGTCAAAGTCCAGAGGAAGAGGCCGGAAAAATAATCCCTCCCCG
CCTCCTGATAGTGACCTGGAGCGTGTGTTTGTCTGGGATTTGGATGAAACCATCATTGTTTTTCACTCA
CTGCTCACCGGGTCTTATGCACAGAAGTATGGCAAGGATCCCCCATGGCTGTAACCCTTGACTCCGC
ATGGAAGAAATGATTTTTAATCTTGCTGATACTCATTGTTTTTAAATGATTTAGAGGAGTGTGATCAA
GTTTATATAGATGATGTTTCTCTGATGATAATGGGCAGGACTTAAGTACCTACAGTTTTGCAACTGAT
GGCTTCCATGCAGCTGCAAGTAGTGCAAACCTTTGTTTGCCAACAGGTGTAAGAGGAGGGGTTGACTGG
ATGAGGAAGTTGGCTTTTCGTTACAGAAGAGTAAAGAATTATATAACACCTACAAGAACAACGTTGGA
GGACTCCTTGCCCTGCCAAGAGGGATGCCTGGCTACAGTTAAGGGCAGAGATTGAAGGTCTGACAGAT
TCCTGGCTAACAAATGCACTTAAGTCTTATCAATTATTAGCACTAGGAGTAAGTGCATAAATGTCTTG
GTAACGACAACACTCACTGATCCCAGCACTTGCAGAGTCTACTCTATAGTTTAGGAGGTGCTTTCCCC
ATTGAGAAATTTACAGTCAACTAAAATAGGAAAAGAAAGTTGCTTTGAACGAATAATGCAAAGGTTT
GGCAGAAAAGTAGTGTATGTTGTAATTGGGGATGGTGTAGAAGAAGAACAGGCAGCAAAAAGCACAAAC
ATGCCCTTCTGGAGGATATCCAGTCACTCAGACCTCCTGGCTCTCCACCAAGCACTGGAATTAGAGTAT
TTG
ACGCGTACGCGGCCGCTCGAG - GFP Tag - GTTTAAAC
```

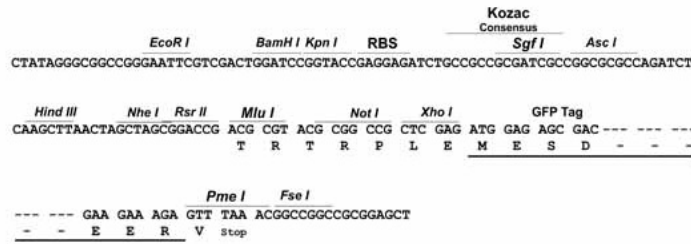
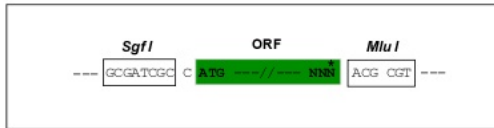
Protein Sequence: >Peptide sequence encoded by RG239190
 Blue=ORF Red=Cloning site Green=Tag(s)

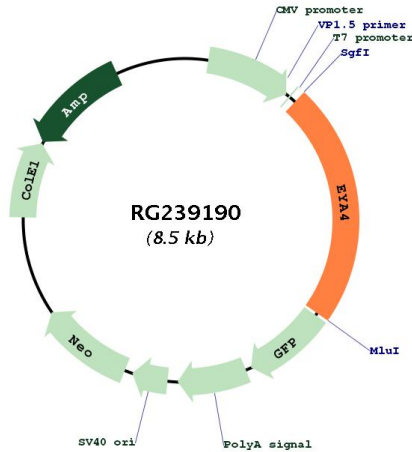
MEDSQDLNEQSVKKTCTESDVSQSQNSRSMEMQDLASPHLTVGGGDTPGSSKLEKSNLSSTSVTTNGTG
 GENMTVLNTADWLLSCNTPSSATMSLLAVKTEPLNSSETTATTGDGALDFTGVSITSSGYSPRSAHQY
 SPQLYPSKYPHILSTPAAQTMAYAGQTQYSGMQQPAVYTAYSQTGQPYSLPTYDLGVMLPAIKTESG
 LSQTQSPLQSGCLSYSPGFSTPQPGQTPYSYQMPGSSFAPSSTIYANNSVSNSTNFGSGSQDYPSYTA
 GQNYAQYYSASTYGAYMTSNNTADGTPSSTSTYQLQESLPGLTNQPGTDLHPGEFDTMQSPSTPIKDL
 DERTCRSSGSKSRGRKNNPSPPPDSDLERVFVWDLDETIIVFHSLLTGSYAQKYGKDPMAVTLGLR
 MEEMIFNLADTHLFFNDLEECDQVHIDDVSSDDNGQDLSTYSFATDGFHAAASSANLCLPTGVRGGVDW
 MRKLAFRYRRVKELNNTYKNNVGGLLGPAKRDAWLQLRAEIEGLTDSWLTNALKSLSIISTRNINVL
 VTTTQLIPALAKVLLYSLGGAFPIENIYSATKIGKESCFERIMQRFGRKVVVVVIGDGVVEEQAAKHHN
 MPFWRISSHDLLALHQALELEYL
 TRTRPLEMESDEGLPAMEIECRITGTLNGVEFELVGGEGTPEQGRMTNKMSTKGALTFSPYLLSHV
 MGYGFYHFGTYPSTYENPFLHAINNGGYNTRIEKYEDGGVLHVSFSYRYEAGRVIGDFKVMGTGFPED
 SVIFTDKIIRSNTAVEHLHPMGDNDLDGSFTRTFLRDGGYSSVVDSHMHFKSAIHPSILQNGGPMFA
 FRRVEEDHSNTELGIVEYQHAFKTPDADAGEERV

Restriction Sites: SgfI-MluI

Cloning Scheme:

Cloning sites used for ORF Shuttling:



Plasmid Map:


ACCN:	NM_001301013
ORF Size:	1935 bp
OTI Disclaimer:	The molecular sequence of this clone aligns with the gene accession number as a point of reference only. However, individual transcript sequences of the same gene can differ through naturally occurring variations (e.g. polymorphisms), each with its own valid existence. This clone is substantially in agreement with the reference, but a complete review of all prevailing variants is recommended prior to use. More info
OTI Annotation:	This clone was engineered to express the complete ORF with an expression tag. Expression varies depending on the nature of the gene.
Components:	The ORF clone is ion-exchange column purified and shipped in a 2D barcoded Matrix tube containing 10ug of transfection-ready, dried plasmid DNA (reconstitute with 100 ul of water).
RefSeq:	NM_001301013.1 , NP_001287942.1
RefSeq Size:	5573 bp
RefSeq ORF:	1938 bp
Locus ID:	2070
UniProt ID:	O95677
Cytogenetics:	6q23.2
Protein Families:	Druggable Genome, Phosphatase, Transcription Factors

MW: 70.6 kDa

Gene Summary: This gene encodes a member of the eyes absent (EYA) family of proteins. The encoded protein may act as a transcriptional activator through its protein phosphatase activity, and it may be important for eye development, and for continued function of the mature organ of Corti. Mutations in this gene are associated with postlingual, progressive, autosomal dominant hearing loss at the deafness, autosomal dominant non-syndromic sensorineural 10 locus. The encoded protein is also a putative oncogene that mediates DNA repair, apoptosis, and innate immunity following DNA damage, cellular damage, and viral attack. Defects in this gene are also associated with dilated cardiomyopathy 1J. Alternative splicing results in multiple transcript variants encoding distinct isoforms. [provided by RefSeq, Jul 2014]