

Product datasheet for **RG239189**

PDE4 (PDE4B) (NM_001297440) Human Tagged ORF Clone

Product data:

Product Type:	Expression Plasmids
Product Name:	PDE4 (PDE4B) (NM_001297440) Human Tagged ORF Clone
Tag:	TurboGFP
Symbol:	PDE4B
Synonyms:	DPDE4; PDEIVB
Mammalian Cell Selection:	Neomycin
Vector:	pCMV6-AC-GFP (PS100010)
E. coli Selection:	Ampicillin (100 ug/mL)



[View online »](#)

ORF Nucleotide Sequence:

>RG239189 representing NM_001297440.
 Blue=ORF Red=Cloning site Green=Tag(s)

```
GCTCGTTAGTGAACCGTCAGAATTTTGTAAACGACTCACTATAGGGCGGCCGGGAATTCGTGACTG
GATCCGGTACCGAGGAGATCTGCCGCCCGGATCGCC
ATGATCTTTGATGTGGAAAATGGCCCTCCCGAGTCCGAGTCCACTGGATCCCCAGGCCAGCTCTTCC
GCTGGGCTGGTACTTCACGCCACCTTTCTGGGCACAGCCAGCGCAGAGAGTCATTCTCTACAGATCA
GACAGCGACTATGACTTGTCAACAAAGGCGATGTCGAGAAACTCTTCTTCCAAGCGAGCAACACGGC
GATGACTTGATTGTAACCTTTTGGCCAGTCTTGGCAGCTTGCAGAGTGTGAGAAACAACCTTCACT
ATACTGACAAACCTTCATGGTACATCTAACAAGAGGTCCCGAGTCTAGTCAGCCTCTGTCTCCAGA
GTCAACCCACAAGAAGAATCTTATCAAAAATTAGCAATGGAAACGCTGGAGGAATTAGACTGGTGTTTA
GACCAGCTAGAGACCATACAGACCTACCGGTCTGTCACTGAGATGGCTTCTAACAAGTTCAAAGAATG
CTGAACCCGGGAGCTGACACACCTCTCAGAGATGAGCCGATCAGGGAACCGGTGTCTGAATACATTTCA
AATACTTTCTTAGACAAGCAGAATGATGTGGAGATCCCATCTCTACCCAGAAAGACAGGGAGAAAAAG
AAAAAGCAGCAGCTCATGACCCAGATAAGTGGAGTGAAGAAATTAATGCATAGTTCAAGCCTAAACAAT
ACAAGCATCTCACGCTTTGGAGTCAACACTGAAAATGAAGATCACCTGGCCAAGGAGCTGGAAGACCTG
AACAAATGGGGTCTTAACATCTTAATGTGGCTGGATATTCTCACAATAGACCCCTAACATGCATCATG
TATGCTATATTCCAGGAAAGAGACCTCCTAAAGACATTCAGAATCTCATCTGACACATTTATAACCTAC
ATGATGACTTTAGAAGACCATTACCATTCTGACGTGGCATATCACAACAGCCTGCACGCTGCTGATGTA
GCCAGTCGACCCATGTTCTCCTTTCTACACCAGCATTAGACGCTGTCTTACAGATTTGGAGATCCTG
GCTGCCATTTTTCAGCTGCCATCCATGACGTTGATCATCCTGGAGTCTCCAATCAGTTTCTCATCAAC
ACAAATTGAGAACTTCTTTGATGATAATGATGAATCTGTGTTGGAAAATCATCACCTTCTGTGGGT
TTCAAATGCTGCAAGAAGAACAACACTGTGACATCTTCAATGAATCTCACAAGAAGCAGCGTCGACACTC
AGGAAGATGGTTATTGACATGGTGTGACCAACTGATATGTCTAAACATATGAGCCTGCTGGCAGACCTG
AAGACAATGGTAGAAAACGAAGAAAGTTACAAGTTCAGGCGTTCTTCTCCTAGACAACATATACCGATCGC
ATTCAGGTCCTTCGCAACATGGTACACTGTGCAGACCTGAGCAACCCACCAAGTCTTGGAAATGTAT
CGGCAATGGACAGACCGCATCATGGAGGAATTTTCCAGCAGGGAGACAAAGAGCGGGAGAGGGGAATG
GAAATTAGCCCAATGTGTGATAAACACACAGCTTCTGTGGAAAAATCCCAGGTTGGTTTCATCGACTAC
ATTGTCCATCCATTGTTGGGAGACATGGGCAGATTTGGTACAGCCTGATGCTCAGGACATTCTCGATACC
TTAGAAGATAACAGGAAGTGGTATCAGAGCATGATACCTCAAAGTCCCTACCACCCTGGACGAGCAG
AACAGGGACTGCCAGGTCTGATGGAGAAGTTTCAGTTTGAAGTACTCTCGATGAGGAAGATTCTGAA
GGACCTGAGAAGGAGGGAGAGGGACACAGCTATTTCCAGCAGCACAAAGACGCTTTGTGTATTGATCCA
GAAAACAGAGATTCCTGGGAGAGACTGACATAGACATTGCAACAGAAGCAAGTCCCCCGTGGATACA
ACGCGTACGCGGCCGCTCGAG - GFP Tag - GTTTAAAC
```

Protein Sequence:

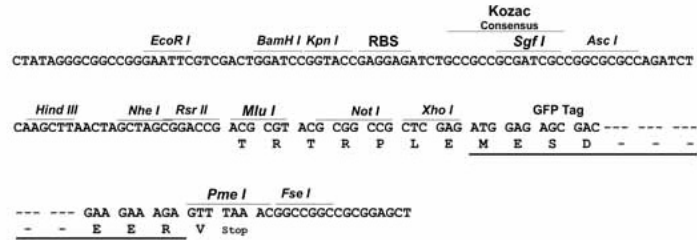
>Peptide sequence encoded by RG239189
 Blue=ORF Red=Cloning site Green=Tag(s)

```
MIFDVENGSPGRSPLDPQASSAGLVLHATFPGHSQRRESFLYRSDSDYDLSPKAMSRNSSLPSEQHG
DDLIVTPFAQVLASLRSVRNFTILTNLHGTSNKRSPAASQPPVSRVNPQEESYQKLAMETLEELDWCL
DQLETIQTYRSVSEMASNFKRMLNRELTHLSEMSRSGNQVSEYISNTFLDKQNDVEIPSPTQKDREKK
KKQQLMTQISGVKMLMHSSLNNTSISRFVNTENEDHLAKELEDLNKWLNI FNVAGYSHNRPLTCIM
YAIFQERDLLKTRISSDTFITYMMTLEDHYHSDVAYHNSLHAADVAQSTHVLLSTPALDAVFTDLEIL
AAIFAAAIHDVDHPGVSNQFLINTNSELALMYNDESVLENHHLAVGFKLLQEEHCDIFMNLTKKQRQTL
RKMVIDMVLATDMSKHMSLLADLKTMTVETKKVTS SSVLLLDNYTDRIQVLRNRMVHCADLSNPTKSLELY
RQWTDRI MEEFFQQGDKERERGMEISPMCDKHTASVEKSQVGFIDYIVHPLWETWADLVQPDADQILDIT
LEDNRNWWYQSMIPQSPSPPLDEQNRDCQLMEKFQFELTLDEEDSEGPEKEGEGHSYFSSTKTL CVIDP
ENRDSLGETDIDIATEDKSPVDT
TRTRPLEMESDESGLPAMEIECRITGTLNGVEFELVGGGEGTPEQGRMTNKMSTKGALTFSPYLLSHV
MGYGFYHFGTYPSGYENPFLHAINNGGYNTRIEKYEDGGVLHVSFSYRYEAGRVIGDFKVMGTGFPED
SVIFTDKIIRSNATVEHLHPMGDNDLDGSFTRTFLRDGGYSSVVD SHMHFKAISHPSILQNGGPMFA
FRRVEEDHSNTELGIVEYQHAFKTPDADAGEERV
```

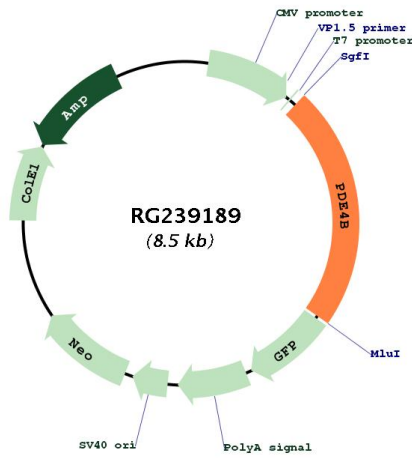
Restriction Sites: SgfI-MluI

Cloning Scheme:

Cloning sites used for ORF Shutting:



Plasmid Map:



ACCN: NM_001297440

ORF Size: 1932 bp

OTI Disclaimer:	The molecular sequence of this clone aligns with the gene accession number as a point of reference only. However, individual transcript sequences of the same gene can differ through naturally occurring variations (e.g. polymorphisms), each with its own valid existence. This clone is substantially in agreement with the reference, but a complete review of all prevailing variants is recommended prior to use. More info
OTI Annotation:	This clone was engineered to express the complete ORF with an expression tag. Expression varies depending on the nature of the gene.
Components:	The ORF clone is ion-exchange column purified and shipped in a 2D barcoded Matrix tube containing 10ug of transfection-ready, dried plasmid DNA (reconstitute with 100 ul of water).
RefSeq:	NM_001297440.1 , NP_001284369.1
RefSeq Size:	4070 bp
RefSeq ORF:	1935 bp
Locus ID:	5142
UniProt ID:	Q07343
Cytogenetics:	1p31.3
Protein Families:	Druggable Genome
Protein Pathways:	Progesterone-mediated oocyte maturation, Purine metabolism
MW:	73.7 kDa
Gene Summary:	This gene is a member of the type IV, cyclic AMP (cAMP)-specific, cyclic nucleotide phosphodiesterase (PDE) family. The encoded protein regulates the cellular concentrations of cyclic nucleotides and thereby play a role in signal transduction. Altered activity of this protein has been associated with schizophrenia and bipolar affective disorder. Alternative splicing and the use of alternative promoters results in multiple transcript variants encoding different isoforms. [provided by RefSeq, Jul 2014]