

Product datasheet for **RG239187**

Znf206 (ZSCAN10) (NM_001282416) Human Tagged ORF Clone

Product data:

Product Type:	Expression Plasmids
Product Name:	Znf206 (ZSCAN10) (NM_001282416) Human Tagged ORF Clone
Tag:	TurboGFP
Symbol:	Znf206
Synonyms:	ZFP206; ZNF206
Mammalian Cell Selection:	Neomycin
Vector:	pCMV6-AC-GFP (PS100010)
E. coli Selection:	Ampicillin (100 ug/mL)



[View online »](#)

ORF Nucleotide Sequence:

>RG239187 representing NM_001282416.
 Blue=ORF Red=Cloning site Green=Tag(s)

```
GCTCGTTAGTGAACCGTCAGAATTTTGTAAACGACTCACTATAGGGCGGCCGGGAATTCGTGCACTG
GATCCGGTACCGAGGAGATCTGCCGCCCGGATCGCC
ATGCTTCCAGTATCAGGAGGACATGGGGCACGGGCGTCCCTGAGCCGGCTCCGGGAGCTCTGCGGCCA
CTGGCTGCGGCCGGCTCTGCACACCAAGAAACAGATCCTGGAGCTGCTGGTGTGCTGGAGCAGTTCTTGAG
TGTGCTGCCTCCGCACCTCCTGGGCCCGCTGCAGGGGCAGCCGCTCAGGGATGGGGAGGAGGTGGTGT
GCTGCTCGAGGGCATCCACCGGGAGCCAGCCACGCGGGGCGCTGGTCCCCAGGGCCCCCACCATGG
CCAGAGGAGAGTTCCCGAGATCAGGAGCTGGCGGCTGTGCTGGAGTGCCTGACCTTTGAGGATGTGCCA
GAGAATAAGGCGTGGCTGCACACCCCCGGGATTCGGAAGCAGAACCCAGACAAGGAGGAATTTAAA
CAAGAAGAGCCCAAAGGGGCTGCCTGGCCCACTCCCATCTTAGCAGAGTCCAGGCAGATAGTCTGGG
GTGCCGGGAGAGCCTTGCGCCAGTCTGCTCGGACGGGGCGCTGCGGCTAGCGGCCCTGGTGAAGTGGG
TCCCTTCTTGGCAGCAGTGAATTTTGGAGGTCAAAGTGGCTGAGGGCGTCCCCGAGCCCAATCCGGAG
TTGCAGTTCATCTGCGCGGACTGCGGGGTGAGCTTCCCGCAGCTGTCTCGCTGAAGGCGCACACGCTG
CGCTCGACCCCGCTGGGCGCTCCTTCCCTGTGCCTTTGCTGCGGGAAGAGCTTCGGCCGAGCTCCATT
CTCAAGCTGCACATGCGCACTCACACGGACGAGCGGCCGACGCCTGCCACCTGTGCGGCCACCGCTTC
CGCCAGAGCTCGCACCTGAGCAAGCACCTGCTGACCCACTCCTCCGAACCCGCTTCTGTGCGCAGAG
TGCGGCCGCGGCTTCCAGCGCCGCGCCAGCCTTGTGACGACCTGCTGGCGCACGCCAGGACCAGAAG
CCGCCCTGCGCTCCTGAGAGTAAGGCCGAAGCGCCGCACTGACCGATGTCTGTGCTCCCACTGCGGC
CAGAGCTTCCAGCGCCGCTCCAGCCTCAAGCGCCACCTGCGGATCCACGCCAGGGACAAGGACCAGCCGG
TCCTCCGAAGGCTCCGGCAGCCGCGCCGGGACTCCGACCGGAGGCCCTTCGTGTGCAGCGACTCGGC
AAGGCCCTCCGGGCAGCGAGCCTTGGTGGCCACCGAGGGTGACACGGGCGAGCCCTTCTCC
TGCCAGGCTTGGCGCCGAGCTTACGCGAGAGCTCGCAGCTGGTACGCCACCAACGGGTGCACACGGGC
GAGAAGCCCTACGCCTGTCCGAGTGGCGGAAGCGCTTTGTGCGCCGGCCAGCCTTGCCCGCCACCTG
CTGACCCACGGTGGCCCTCGGCCACCAGTGCACCCAGTGGGGAAGAGTTTCGGCCAGACCCAGGAT
CTGGCCCGCCACCAGCGCAGCCACACGGGCGAGAAGCCCTGCCGCTGCAGCGAGTGGGTGAGGGCTTC
AGCCAGAGCGCCACCTGGCGCGCCACCAGCGCATCCACACAGGGGAGAAGCCCCAGCCTGCGACACC
TGCGGCCACCGTTTCCGCAATAGCTCCAACCTGGCCCGCCATCGCCGAGCCACACGGGCGAGCGGCC
TACAGCTGTGAGCGTGGGTGCGAGCTTCCGGCGCAACGCGCATCTGCGGCGGCACCTGGTACCCAT
GCGGAGCCCGGCAGGAGCAGGCCGAGCCCCGAGGAGTGGTGGAGTGGGGAAGAGCTTCAGCCGC
AGCTGCAATCTGCTGCGACACCTGCTGGTGCACACGGGCCAGGCCCTACTCCTGCACGAGTGTGGC
CGCAGCTTCAGCCGCAACTCCCACCTGTGCGCCACCTGCGCACCCACGCCCCGAGACGCTGTAC
ACGCGTACGCGGCCGCTCGAG - GFP Tag - GTTTAAAC
```

Protein Sequence:

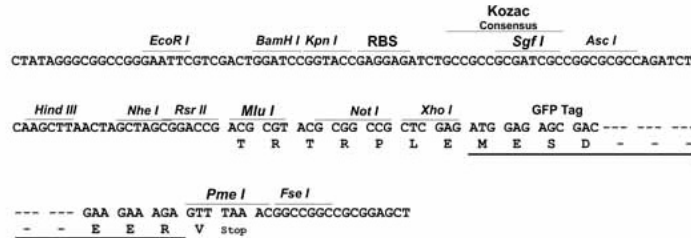
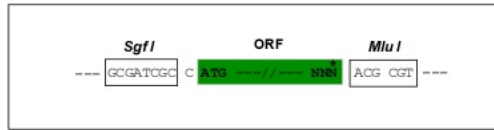
>Peptide sequence encoded by RG239187
 Blue=ORF Red=Cloning site Green=Tag(s)

```
MLPVSGHGATGVPEPAPGALRPLAAAGSAHQETDPAAGAGAVPECAASAPPGPPAGAAAQGWGGGA
AARGHPPGAQPRGAAGPQGPSWPPESSRDQELAAVLECLTFEDVPENKAWPAHPLGFGRTPDKEEFK
QECPKGAAWPTPILAESQADSPGVGPECAQSLGRGAAASGPGEDGSLLSSEILEVKVAEGVPEPNPE
LQFICADCGVFPQLSRLKAHQLRSHPAGRSFLCLCGKSFGRSSILKLMRTHTDERPHACHLCGHRF
RQSSHL SKHLL THSSEPAFLCAECGRGFQRRASLVQHLLAHAQDQKPPCAPEKAEAPPLTDVLCSHCG
QSFQRRSSLKRHLRIHARDKDRSSESGSRRRSDRRPFVCSDCGKAFRRSEHLVAHRRVHTGERPFS
CQACGRSFTQSSQLVSHQRVHTGEKPYACPCGKRFVRRASLARHLLTHGGPRPHCTQCGKSFGQTQD
LARHQRSHTEKPCRCSECGEGFSQSAHLARHQRHTGEKPHACDTCGHRFRNSSNLARHRRSHTGERP
YSCQTCGRSFRNAHLRRLATHAEPGQEAPEPQECVCGKSF SRSCNLLRHLVHTGARPYSCTQCG
RSFSRNSHLLRHLRTHARETLY
TRTRPLEMESDESGLPAMEIECRITGTLNGVEFELVGGEGTPEQGRMTNKMSTKGALTFSPYLLSHV
MGYGFYHFGTYPSGYENPFLHAINNGGYNTRIEKYEDGGVLHVSFSYRYEAGRVIGDFKVMGTGFPED
SVIFTDKIIRSNATVEHLHPMGDNDLDGSFTRTFSLRDGGYSSVVDSSHMFKSAIHPSILQNGGPMFA
FRRVEEDHSNTELGIVEYQHAFKTPDADAGEERV
```

Restriction Sites: SgfI-MluI

Cloning Scheme:

Cloning sites used for ORF Shutting:



ACCN: NM_001282416

ORF Size: 1929 bp

OTI Disclaimer: The molecular sequence of this clone aligns with the gene accession number as a point of reference only. However, individual transcript sequences of the same gene can differ through naturally occurring variations (e.g. polymorphisms), each with its own valid existence. This clone is substantially in agreement with the reference, but a complete review of all prevailing variants is recommended prior to use. [More info](#)

OTI Annotation: This clone was engineered to express the complete ORF with an expression tag. Expression varies depending on the nature of the gene.

Components: The ORF clone is ion-exchange column purified and shipped in a 2D barcoded Matrix tube containing 10ug of transfection-ready, dried plasmid DNA (reconstitute with 100 ul of water).

RefSeq: [NM_001282416.2](#)

RefSeq Size: 2476 bp

RefSeq ORF: 1932 bp

Locus ID: 84891

UniProt ID: [Q96SZ4](#)

Cytogenetics: 16p13.3

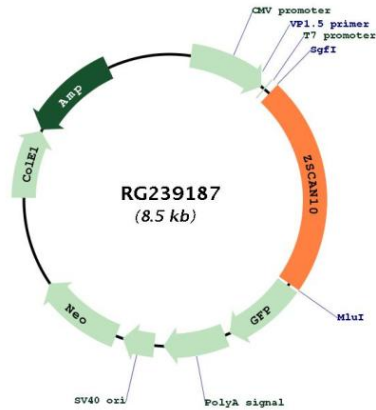
Protein Families: ES Cell Differentiation/IPS, Transcription Factors

MW: 70.1 kDa

Gene Summary:

Embryonic stem (ES) cell-specific transcription factor required to maintain ES cell pluripotency. Can both activate and /or repress expression of target genes, depending on the context. Specifically binds the 5'-[GA]CGCNGCG[CT]-3' DNA consensus sequence. Regulates expression of POU5F1/OCT4, ZSCAN4 and ALYREF/THOC4.[UniProtKB/Swiss-Prot Function]

Product images:



Circular map for RG239187