

## Product datasheet for **RG239182**

### **ZNF343 (NM\_001282497) Human Tagged ORF Clone**

#### **Product data:**

Product Type:	Expression Plasmids
Product Name:	ZNF343 (NM_001282497) Human Tagged ORF Clone
Tag:	TurboGFP
Symbol:	ZNF343
Synonyms:	dj734P14.5
Mammalian Cell Selection:	Neomycin
Vector:	pCMV6-AC-GFP (PS100010)
E. coli Selection:	Ampicillin (100 ug/mL)



[View online »](#)

**ORF Nucleotide Sequence:**

>RG239182 representing NM\_001282497.  
 Blue=ORF Red=Cloning site Green=Tag(s)

```
GCTCGTTAGTGAACCGTCAGAATTTTGTAAACGACTCACTATAGGGCGGCCGGGAATTCGTGACTG
GATCCGGTACCGAGGAGATCTGCCGCCCGGATCGCC
ATGATGTTGCCTTATCCTTCAGCACTGGGAGATCAATACTGGGAAGAGATTTTGCTTCAAAGAATGGG
GAAAATGTAGAGACTATGAAGAAATTGACCCAAAATCATAAAGCGAAAGGCTTGCTTCTAATGATACT
GACTGCCCCAGAAAAGGAGGGAAAGGCCAAAATAGTGGTACCAGTTACATTCAGGGATGTGACTGTG
ATCTTCACAGAAGCAGAATGGAAGAGACTGAGTCCAGAGCAGAGGAATCTATACAAAAGAAGTGATGCTG
GAGAATTACAGGAATCTTCTCTCATTGGATGGAGTTTCGCTCTTGTGCCCAGGCTAGAGTGCAATCGT
GCAATCTCGGCTCACCACAACCTTTGCCTCCCGGGTTCAAGCAATTCTCCTGCCACAGCCTCTCGAGTA
GTTGGGATTACAGCAGAACCAAAGCCAGAAATCTACACTTGTTCCTCCTGCCTTCTGCCTTCTCCTGT
CAGCAGTTCCTCAGTCAACATGTACTTCAGATCTTCTGGGCTTATGTGCAGAAAATCACTTCCATCCA
GGGAATTCAGCCAGGGCATTGGAAACAGCAGGGGCAGCAGTATCCCATGTAAGCTGTTGGTTTGAA
AATGCAGAAGGTCAGGAGAGAGGAGGTGGCTCAAACCCTGGTCTGCAAGGACAGAGGAGAGAGAAAACC
TCAAGGGCATTCCCAGCCCACTCAAAGACAGTCAGCAAGTCTAGAAAAGGCAACATGGTGGTAGAA
ACAGAGCCAGCTCAGCCCAAAGACCAAACCTGTGCAGCTAGACAAAGGCTTGAAGGAATTAGAAAACC
TTGAGATTTGGAGCAATCAACTGTAGAGAGTATGAACCGGACCATAACCTGGAATCAAACCTTTATTACA
AACCCGAGGACCTCTTAGGGAAGAAGCCCTACATTTGCAGTGATTGTGGGCGAAGCTTTAAAGATAGA
TCAACCCTCATCAGACACCATCGTATACACTCGATGGAGAAGCCTTATGTGTGCAGTGAGTGCAGGCGA
GGTTTTAGCCAGAAGTCCAACCTCAGCAGACACCAGAGAACACATTCAGAAGAGAAGCCTTATTTGTGC
AGGGAGTGTGGCAAAGCTTTAGAAGTAAGTCCATCCTCAATAGACATCAGTGGACTCAGCAGAGGAG
AAGCCCTATGTTTGCAGCGAGTGTGGCGAGGCTTTAGCGAGAAGTCATCCTTATCAGACACAGAGG
ACACTCAGGAGTGAAGCCCTATGTGTGCTGGAGTGTGGACGAAGCTTTTGTGATAAGTCAACCCCTC
AGAAAACACCAGAGGATACACTCAGGGGAGAAGCCTTATGTTTGCAGGGAGTGTGGGCGAGGCTTTAGC
CAGAACTCAGATCTCATCAAACACCAGAGGACACACTTGGATGAGAAGCCTTATGTTTGCAGGGAGTGT
GGGCGAGGCTTTTGTGACAAGTCAACCCTCATCATACAGAGCGGACGCACTCTGGAGAGAAGCCTTAT
GTGTGTGGTGTGAGTGTGGCCGAGGCTTTAGTCGAAATCACTCCTCCTTGTCCACCAGAGGACACACTCA
GGGAGAAGCATTATGTCTGCAGGGAGTGTAGGCGAGGTTTTAGCCAGAAGTCAAATCTCATCAGACAC
CAGAGGACGCACTCAAATGAGAAGCCTTATATTTGCAGGGAATGTGGGCGAGGCTTTTGTGACAAGTCA
ACCCTCATTGTACATGAGAGGACACACTCAGGAGAGAAGCCTTACGTGTGCAGTGAGTGTGGCCGAGGC
TTTAGCCGAAAATCACTCCTCCTTGTCCACCAGAGGACACACTCAGGGGAGAAGCATTATGTTTGTAGG
GAGTGTGGGCGAGGCTTTAGTCATAAGTCAAATCTCATCAGACACCAGAGGACACAC
ACGCGTACGCGGCCGCTCGAG - GFP Tag - GTTTAAAC
```

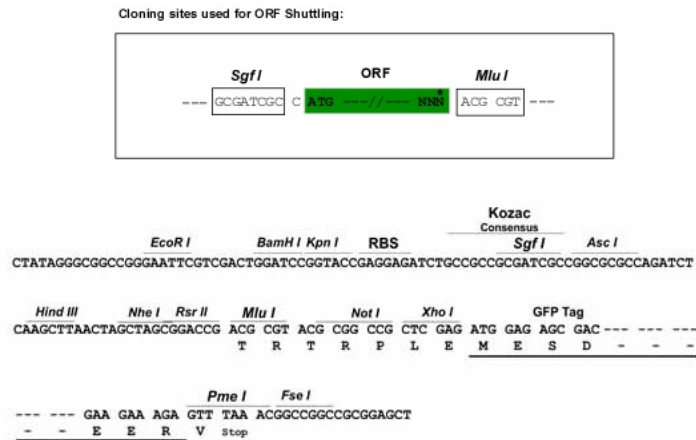
**Protein Sequence:**

>Peptide sequence encoded by RG239182  
 Blue=ORF Red=Cloning site Green=Tag(s)

```
MMLPYPSALGDQYWEIILLPKNGENVETMKKLTQNHKAKGLPSNDTDCPQKKEGKAQIVVPVTFRDVTV
IFTEAEWKRLSPEQRNLYKEVMLENYRNLLSLDGVSLLLPRLECNRAISAHNLCPLPGSSNSPATASRV
VGITAEPKPEIYTCSSCLLAFSCQQLSQHVLQIFLGLCAENHFHPGNSSPGHWKQGGQYSHVSCWFE
NAEGQERGGGSKPWSARTEERETSRAFPSPLQRQSASPRKGNMVVETEPSSAQRPNPVQLDKLKELET
LRFGAINCREYEPDHNLESNFITNPRTLLGKKPYICSDCGRSFKDRSTLIRHHRHSMKPYVCSECGR
GFSQKSNLSRHQRTHSEEKPYLCRECGQSFRRSKSILNRHQWTHSEEKPYVCSECGRGFSEKSSFIRHQR
THSGEKPYVLCGRSFCDKSTLRKHQRHISGEKPYVCRECGRGFSQNSDLIKHQRTHLDEKPYVCREC
GRGFCDKSTLIHERTHSGEKPYVCGECGRGFSRKSLLL VHQRTHSGEKHYVCRECRRGFSQKSNLIRH
QRTHSNEKPYICRECGRFCDKSTLIVHERTHSGEKPYVCECGRGFSRKSLLL VHQRTHSGEKHYVCR
ECGRGFSHKSNIHQHQRTH
TRTRPLEMESDESGLPAMEIECRITGTLNGVEFELVGGGEGTPEQGRMTNKMSTKGALTFSPYLLSHV
MGYGFYHFGTYPSGYENPFLHAINNGGYNTRIEKYEDGGVLHVSFSYRYEAGRVIGDFKVMGTGFPED
SVIFTDKIIRSNATVEHLHPMGDNDLDGSFTRTFLSLRDGGYSSVVDSSHMHFKSAIHPSILQNGGPMFA
FRRVEEDHSNTELGIVEYQHAFKTPDADAGEERV
```

Restriction Sites: Sgfl-MluI

Cloning Scheme:



ACCN: NM\_001282497

ORF Size: 1920 bp

OTI Disclaimer: The molecular sequence of this clone aligns with the gene accession number as a point of reference only. However, individual transcript sequences of the same gene can differ through naturally occurring variations (e.g. polymorphisms), each with its own valid existence. This clone is substantially in agreement with the reference, but a complete review of all prevailing variants is recommended prior to use. [More info](#)

OTI Annotation: This clone was engineered to express the complete ORF with an expression tag. Expression varies depending on the nature of the gene.

Components: The ORF clone is ion-exchange column purified and shipped in a 2D barcoded Matrix tube containing 10ug of transfection-ready, dried plasmid DNA (reconstitute with 100 ul of water).

RefSeq: [NM\\_001282497.2](#)

RefSeq Size: 3767 bp

RefSeq ORF: 1923 bp

Locus ID: 79175

UniProt ID: [Q6P1L6](#)

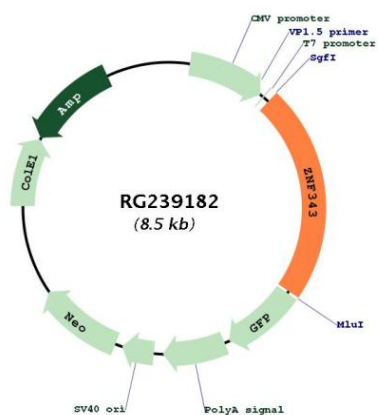
Cytogenetics: 20p13

Protein Families: Transcription Factors

MW: 73.9 kDa

Gene Summary: May be involved in transcriptional regulation.[UniProtKB/Swiss-Prot Function]

Product images:



Circular map for RG239182