

Product datasheet for **RG239180**

PIB5PA (INPP5J) (NM_001284289) Human Tagged ORF Clone

Product data:

Product Type:	Expression Plasmids
Product Name:	PIB5PA (INPP5J) (NM_001284289) Human Tagged ORF Clone
Tag:	TurboGFP
Symbol:	INPP5J
Synonyms:	INPP5; PIB5PA; PIPP
Mammalian Cell Selection:	Neomycin
Vector:	pCMV6-AC-GFP (PS100010)
E. coli Selection:	Ampicillin (100 ug/mL)



[View online »](#)

ORF Nucleotide Sequence:

>RG239180 representing NM_001284289.
 Blue=ORF Red=Cloning site Green=Tag(s)

```
GCTCGTTAGTGAACCGTCAGAATTTTGTAAACGACTCACTATAGGGCGGCCGGGAATTCGTGACTG
GATCCGGTACCGAGGAGATCTGCCGCCCGGATCGCC
ATGGCCCTCCCAAGGCTTGGCACACAGAGTACAGGGCCTGGCAGGTGCCTGAGCCCCAACCTTCAGGCC
CAAGAAGCCCCAGCCCCAGTACCACCTCTTCTACATCCACCCTGTATCCTCCCCTTGGTCAGCT
CAGCCTACCTGGAAGAGCGACCCCGCTTCCGGATCACTGTGGTACATGGAACGTGGGCACTGCCATG
CCCCAGACGATGTACATCCCTCCTCCACCTGGGCGGTGGTGACGACAGCGACGGCGCAGACATGATC
GCCATAGGGTTGCAGGAAGTGAAGTCCATGCTCAACAAGCGACTCAAGGACGCCCTTTCACGGACCAG
TGGAGTGAGCTGTTTATGGATGCGCTAGGGCCCTTCAACTTCGTGCTGGTGGTTCGGTGGATGCAG
GGTGTATCCTGCTGCTGTTTCGCAAGTACTACCACCTGCCCTTCTGCGAGACGTGCAGACCGACTGC
ACGCGCACTGGCCTGGGCGGCTACTGGGGTAACAAGGGTGGCGTGAGCGTGCCTGGCGGCTTCCGGG
CACATGCTGCTGCTTCTGAAGTCCACTTGCTGCGCATATGGACAAGGGCGGAGCAGCGCAAGACAAC
TCCAGACCATCCTCAGCTCCAGCAGTCCAAGGGCCGGGCGCACAGGGCATCCTGGATCATGACCTC
GTGTTCTGGTTCGGGGACCTGAAGTTCGCCATTGAGAGCTATGACCTGCACTTTGTCAAGTTTGCCATC
GACAGTGACCAGCTCCATCAGCTCTGGGAGAAGGACCAGCTCAACATGGCCAAGAACACCTGGCCATT
CTGAAGGGCTTTTCAAGGGGGCCCTCAACTTCGCTCCCACCTTCAAGTTTGATGTGGGTACCAACAAA
TACGATACCAGTGCCAAGAAACGGAAGCCAGCTTGACAGACCGTATCCTATGGAAGGTCAAGGCTCCA
GGTGGGGTCCCAGCCCCCAGGACGGAAGAGCCACCGACTCCAGGTGACGCAGCACAGCTACCGCAGC
CACATGGAATACACAGTCAGCGACCACAAGCCTGTGGCTGCCAGTTCCTCCTGCAGTTTGCCTTCAGG
GACGACATGCCACTGGTGGCTGGAGGTGGCAGATGAGTGGGTGCGGCCGAGCAGGCGGTGGTGGAGG
TACCGCATGGAACAGTGTTCGCCCGCAGCTCCTGGGACTGGATCGGCTTATACCGGGTGGTTCGCCG
CATTGCAAGGACTATGTGGCTTATGTCTGGGCCAAACATGAAGATGTGGATGGGAATACCTACCAGGTA
ACATTCAGTGAGGAATCACTGCCAAGGGCCATGGAGACTTCATCCTGGGCTACTATAGTACAACCAC
AGCATCCTCATCGGCATCACTGAACCTTCCAGATCTCGTGCCTTCTCGGAGTTGGCCAGCAGCAGC
ACAGACAGCTCAGGCACCAGCTCAGAGGGAGAGGATGACAGCACACTGGAGCTCCTTGCACCCAAGTCC
CGCAGCCCCAGTCTGGCAAGTCCAAGCGACACCCGAGCCGAGCCGGGACTGGCCAGGTTCCCTGGG
CTTGCCCTACGGCCCTCATCCCCTGAACGCCGTGGTGGCAGCCGTAGCCCTCACCCAGAGCCGCCG
CTGTCCCAGTGGCTCCTGACAGGAGCAGTAATGGCAGCAGCCGGGCGAGTAGTGAAGAGGGGCCCTCT
GGTTGCCTGGCCCTGGGCTTCCCACCAGCTGTGCTCGAAGCCTGGGCTGTGCCCCCTTGGCG
CTAGAGACTGTAGACCCTGGTGGTGGTGGCTCCTGGGGACCTGATCGGGAGGCCCTGGCGCCCAACAGC
CTGTCTCCTAGTCCCCAGGGCCATCGGGGGCTGGAGGAAGGGGGCCTGGGGCCC
ACGCGTACGCGGCCGCTCGAG - GFP Tag - GTTTAAAC
```

Protein Sequence:

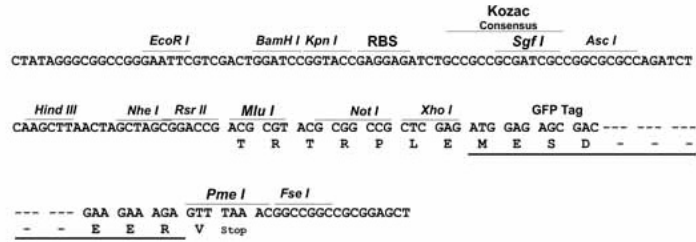
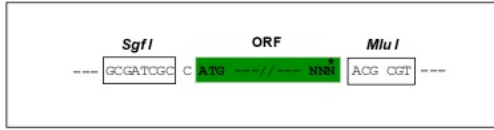
>Peptide sequence encoded by RG239180
 Blue=ORF Red=Cloning site Green=Tag(s)

```
MALPRLGTQSTGPRCLSPNLQAQEAPAPVTTSSSTLSSSPWSAQPTWKSDFRITVVTWNVGTAM
PPDDVTSLLHLGGGDDSDGADMIAGLQEVNSMLNKRKDALFTDQWSELFMDALGPFNFVLSVSRMQ
GVILLFLAKYYHLPFLRDVQDCTRTGLGGYWGNKGGVSVRLAAFHMLCFLNCHLPAHMDKAEQRKDN
FQTILSLQFQGPQAQILDHDLVFVWFDLNFRIESYDLHFVKFAIDSDQLHQLWEKDQLNMAKNTWPI
LKGFGQEGPLNFAPTFKFDVGTNKYDTSAKKRKPAWTDRILWKVKAPGGGSPSGRKSRLQVTQHSYRS
HMEYTVSDHKPVAAQFLQAFRRDMPVRLVAVDEWVRPEQAVVRYRMTVVFARSSWDWIGLYRVGFR
HCKDYVAVYVWAKHEDVDGNTYQVTFSEESLPGHGFILGYSHNHSILIGITEPFQISLPSSELAASS
TDSSGTSSEGEDDSTLELLAPKSRSPSPGKSKRHRSPGLARFPGLALRPSSRERRRGASRSPSQSRR
LSRVAPDRSSNGSSRGSSEEGSPGLPGWAFPPAVPRSLGLLPALRLETVDPPGGGSGWDPREALAPNS
LSPSPQGHRLGEEGLGP
TRTRPLEMESDESGLPAMEIECRITGTLNGVEFELVGGGEGTPEQGRMTNKMSTKGALTFSPYLLSHV
MGYGFYHFGTYPSGYENPFLHAINNGGYNTRIEKYEDGGVLHVSFSYRYEAGRVIGDFKVMGTGFPED
SVIFTDKIIRSNATVEHLHPMGDNDLDGSFTRTFLRDGGYSSVVDSSHMHFKSAIHP SILQNGGPMFA
FRRVEEDHSNTELGIVEYQHAFKTPDADAGEERV
```

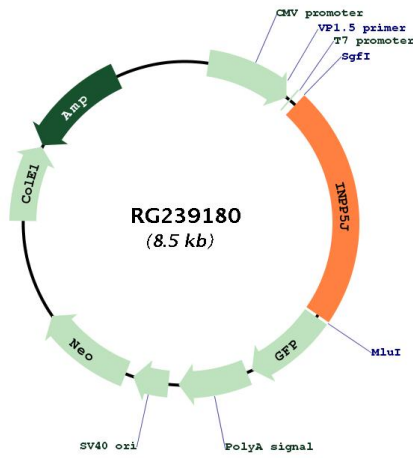
Restriction Sites: SgfI-MluI

Cloning Scheme:

Cloning sites used for ORF Shutting:



Plasmid Map:



ACCN: NM_001284289

ORF Size: 1917 bp

OTI Disclaimer:	The molecular sequence of this clone aligns with the gene accession number as a point of reference only. However, individual transcript sequences of the same gene can differ through naturally occurring variations (e.g. polymorphisms), each with its own valid existence. This clone is substantially in agreement with the reference, but a complete review of all prevailing variants is recommended prior to use. More info
OTI Annotation:	This clone was engineered to express the complete ORF with an expression tag. Expression varies depending on the nature of the gene.
Components:	The ORF clone is ion-exchange column purified and shipped in a 2D barcoded Matrix tube containing 10ug of transfection-ready, dried plasmid DNA (reconstitute with 100 ul of water).
RefSeq:	NM_001284289.1 , NP_001271218.1
RefSeq Size:	2603 bp
RefSeq ORF:	1920 bp
Locus ID:	27124
UniProt ID:	Q15735
Cytogenetics:	22q12.2
Protein Families:	Druggable Genome
Protein Pathways:	Inositol phosphate metabolism, Metabolic pathways, Phosphatidylinositol signaling system
MW:	70.9 kDa
Gene Summary:	Inositol 5-phosphatase, which converts inositol 1,4,5-trisphosphate to inositol 1,4-bisphosphate. Also converts phosphatidylinositol 4,5-bisphosphate to phosphatidylinositol 4-phosphate and inositol 1,3,4,5-tetrakisphosphate to inositol 1,3,4-trisphosphate in vitro. May be involved in modulation of the function of inositol and phosphatidylinositol polyphosphate-binding proteins that are present at membranes ruffles (By similarity).[UniProtKB/Swiss-Prot Function]