

Product datasheet for **RG239179**

PIB5PA (INPP5J) (NM_001284288) Human Tagged ORF Clone

Product data:

Product Type:	Expression Plasmids
Product Name:	PIB5PA (INPP5J) (NM_001284288) Human Tagged ORF Clone
Tag:	TurboGFP
Symbol:	PIB5PA
Synonyms:	INPP5; PIB5PA; PIPP
Mammalian Cell Selection:	Neomycin
Vector:	pCMV6-AC-GFP (PS100010)
E. coli Selection:	Ampicillin (100 ug/mL)



[View online »](#)

ORF Nucleotide Sequence:

>RG239179 representing NM_001284288.
 Blue=ORF Red=Cloning site Green=Tag(s)

```
GCTCGTTTAGTGAACCGTCAGAATTTTGTAAACGACTCACTATAGGGCGGCCGGGAATTCGTGACTG
GATCCGGTACCGAGGAGATCTGCCGCCCGGATCGCC
ATGGCCCTCCCAAGGCTTGGCACACAGAGTACAGGGCCTGGCAGGTGCCTGAGCCCCAACCTTCAGGCC
CAAGAAGCCCCAGCCCCAGTACCACCTCTTCTACATCCACCCTGTATCCTCCCCTTGGTCAGCT
CAGCCTACCTGGAAGAGCGACCCCGCTTCCGGATCACTGTGGTACATGGAACGTGGGCACTGCCATG
CCCCAGACGATGTCACATCCCTCCTCCACCTGGGCGGTGGTGACGACAGCGACGGCGCAGACATGATC
GCCATAGGGTTGCAGGAAGTGAAGTCCATGCTCAACAAGCGACTCAAGGACGCCCTTTCACGGACCAG
TGGAGTGAGCTGTTTATGGATGCGCTAGGGCCCTTCAACTTCGTGCTGGTGGTTCGGTGGAGTGCAG
GGTGTATCCTGCTGCTGTTTCGCAAGTACTACCACCTGCCCTTCTGCGAGACGTGCAGACCGACTGC
ACGCGCACTGGCCTGGGCGGCTACTGGGTAAAGGGTGGCGTGAGCGTGCCTGGCGGCTTCCGGG
CACATGCTGCTGCTTCTGAAGTCCACTTGCTGCGCATATGGACAAGGGCGAGCAGCGCAAGACAAC
TCCAGACCATCCTCAGCTCCAGCAGTCCAAGGGCCGGCGCACAGGGCATCCTGGATCATGACCTC
GTGTTCTGGTTCGGGGACCTGAAGTCCGCATTGAGAGCTATGACCTGCACTTTGTCAAGTTGGCCATC
GACAGTGACCAGCTCCATCAGCTCTGGGAGAAGGACCAGCTCAACATGGCCAAGAACACCTGGCCATT
CTGAAGGGCTTTTCAAGGGGGCCCTCAACTTCGCTCCCACCTTCAAGTTTGGTGTGGTACCAACAAA
TACGATACCAGTGCCAAGAAACGGAAGCCAGCTTGACAGACCGTATCCTATGGAAGGTCAAGGCTCCA
GGTGGGGGTCCCAGCCCCCAGGACGGAAGAGCCACCGACTCCAGGTGACGCAGCACAGCTACCGCAGC
CACATGGAATACACAGTCAGCGACCACAAGCCTGTGGCTGCCAGTTCCTCCTGCAGTTTGCCTTCAGG
GACGACATGCCACTGGTGGCTGGAGGTGGCAGATGAGTGGGTGCGGCCGAGCAGGCGGTGGTGGAGG
TACCGCATGGAACAGTGTTCGCCCGCAGCTCCTGGGACTGGATCGGCTTATACCGGGTGGTTCGCCG
CATTGCAAGGACTATGTGGCTTATGTCTGGGCCAAACATGAAGATGTGGATGGGAATACCTACCAGGTA
ACATTCAGTGAGGAATCACTGCCAAGGGCCATGGAGACTTCATCCTGGGCTACTATAGTACAACCAC
AGCATCCTCATCGGCATCACTGAACCTTCCAGATCTCGTGCCTTCTCGGAGTTGGCCAGCAGCAGC
ACAGACAGCTCAGGCACCAGCTCAGAGGGAGAGGATGACAGCACACTGGAGCTCCTTGCACCCAAGTCC
CGCAGCCCCAGTCTGGCAAGTCCAAGCGACACCCGAGCCGAGCCGGGACTGGCCAGGTTCCCTGGG
CTTGCCCTACGGCCCTCATCCCCTGAACGCCGTGGTGCAGCCGTAGCCCTCACCCAGAGCCGCCG
CTGTCCCAGTGGCTCCTGACAGGAGCAGTAATGGCAGCAGCCGGGCGAGTGTGAAGAGGGGCCCTCT
GGTTGCCTGGCCCTGGGCTTCCCACCAGCTGTGCTCGAAGCCTGGGCTGTGCCCCCTTGGCG
CTAGAGACTGTAGACCCTGGTGGTGGTGGCTCCTGGGGACCTGATCGGGAGGCCCTGGCGCCCAACAGC
CTGTCTCCTAGTCCCCAGGGCCATCGGGGGCTGGAGGAAGGGGGCCTGGGGCCC
ACGCGTACGCGGCCGCTCGAG - GFP Tag - GTTTAAAC
```

Protein Sequence:

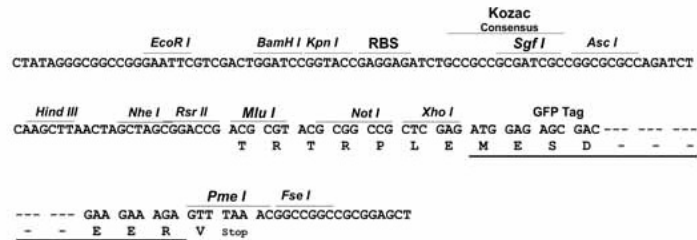
>Peptide sequence encoded by RG239179
 Blue=ORF Red=Cloning site Green=Tag(s)

```
MALPRLGTQSTGPRCLSPNLQAQEAPAPVTTSSSTLSSSPWSAQPTWKSDFRITVVTWNVGTAM
PPDDVTSLLHLGGGDDSDGADMIAGLQEVNSMLNKRKDALFTDQWSELFMDALGPFNFVLSVSRMQ
GVILLFLAKYYHLPFLRDVQDCTRGLGGYWGNKGGVSVRLAAFHMLCFLNCHLPAHMDKAEQRKDN
FQTILSLQQFQGPQAQILDHDLVFVFGDLNFRIESYDLHFVKFAIDSDQLHQLWEKDQLNMAKNTWPI
LKGFQEGPLNFAPTFKFDVGTNKYDTSAKKRKPAWTDRILWKVKAPGGGSPSGRKSRLQVTQHSYRS
HMEYTVSDHKPVAAQFLQAFRDDMPLVRLEVADEWVRPEQAVVRYRMTVVFARSSWDWIGLYRVGFR
HCKDYVAVYWAKHEDVDGNTYQVTFSEESLPGHGFILGYSHNHSILIGITEPFQISLPSELASSS
TDSSGTSSEGEDDSTLELLAPKSRSPSPGKSKRHRSPGLARFPGLALRPSSRERRRGASRSPSQSRR
LSRVAPDRSSNGSSRGSSEEGPSGLPGWAFPPAVPRSLGLLPALRLETVDPPGGGSGWDPREALAPNS
LSPSPQGHRLGEEGLGP
TRTRPLEMESDESGLPAMEIECRITGTLNGVEFELVGGGEGTPEQGRMTNKMSTKGALTFSPYLLSHV
MGYGFYHFGTYPSGYENPFLHAINNGGYNTRIEKYEDGGVLHVSFSYRYEAGRVIGDFKVMGTGFPED
SVIFTDKIIRSNATVEHLHPMGDNDLDGSFTRTFLRDGGYSSVVDSSHMHFKSAIHPSILQNGGPMFA
FRRVEEDHSNTELGIVEYQHAFKTPDADAGEERV
```

Restriction Sites: SgfI-MluI

Cloning Scheme:

Cloning sites used for ORF Shutting:


ACCN: NM_001284288

ORF Size: 1917 bp

OTI Disclaimer: The molecular sequence of this clone aligns with the gene accession number as a point of reference only. However, individual transcript sequences of the same gene can differ through naturally occurring variations (e.g. polymorphisms), each with its own valid existence. This clone is substantially in agreement with the reference, but a complete review of all prevailing variants is recommended prior to use. [More info](#)
OTI Annotation: This clone was engineered to express the complete ORF with an expression tag. Expression varies depending on the nature of the gene.

Components: The ORF clone is ion-exchange column purified and shipped in a 2D barcoded Matrix tube containing 10ug of transfection-ready, dried plasmid DNA (reconstitute with 100 ul of water).

RefSeq: [NM_001284288.1](#), [NP_001271217.1](#)
RefSeq Size: 2481 bp

RefSeq ORF: 1920 bp

Locus ID: 27124

UniProt ID: [Q15735](#)
Cytogenetics: 22q12.2

Protein Families: Druggable Genome

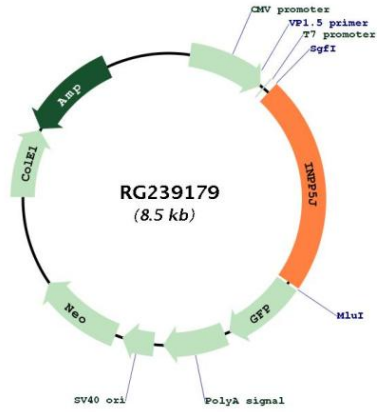
Protein Pathways: Inositol phosphate metabolism, Metabolic pathways, Phosphatidylinositol signaling system

MW: 70.9 kDa

Gene Summary:

Inositol 5-phosphatase, which converts inositol 1,4,5-trisphosphate to inositol 1,4-bisphosphate. Also converts phosphatidylinositol 4,5-bisphosphate to phosphatidylinositol 4-phosphate and inositol 1,3,4,5-tetrakisphosphate to inositol 1,3,4-trisphosphate in vitro. May be involved in modulation of the function of inositol and phosphatidylinositol polyphosphate-binding proteins that are present at membranes ruffles (By similarity).[UniProtKB/Swiss-Prot Function]

Product images:



Circular map for RG239179