

Product datasheet for **RG239174**

COL8A2 (NM_001294347) Human Tagged ORF Clone

Product data:

Product Type:	Expression Plasmids
Product Name:	COL8A2 (NM_001294347) Human Tagged ORF Clone
Tag:	TurboGFP
Symbol:	COL8A2
Synonyms:	FECD; FECD1; PPCD; PPCD2
Mammalian Cell Selection:	Neomycin
Vector:	pCMV6-AC-GFP (PS100010)
E. coli Selection:	Ampicillin (100 ug/mL)



[View online »](#)

ORF Nucleotide Sequence:

>RG239174 representing NM_001294347.
 Blue=ORF Red=Cloning site Green=Tag(s)

```
GCTCGTTAGTGAACCGTCAGAATTTTGTAAACGACTCACTATAGGGCGGCCGGGAATTCGTGCACTG
GATCCGGTACCGAGGAGATCTGCCGCCCGGATCGCC
ATGCCTTACCGCTGCTGCCGATGGACCTGAAGGGAGAGCCCGGCCCCCTGGGAAGCCCGGCCCTCGG
GGTCCCCCTGGCCCCCTGGCTTCCCAGGAAAACAGGCATGGGAAAGCCAGGACTCCATGGGCAGCCT
GGCCTGCTGGGCCCCCTGGCTTCTCCGGATGGGCAAGGCTGGTCCCCAGGGCTCCCTGGCAAGGTC
GGCCACCAAGGGCAGCCGGGGCTTCGGGGGAGCCAGGAATACGAGGGGACCAGGGCCTCCGGGGACCC
CCAGGACCCCTGGCCTCCCGGGCCCTCAGGCATTACTATCCCTGGAAAACAGGTGCCAAGGGGTG
CCAGGGCCCCAGGATCCAGGGGGAACAGGGCCCCAGGGGAGCCTGGGCCCCAGGTGATCGAGGC
CTCAAGGGGGATAATGGAGTGGCCAGCCGGGCTGCCTGGGGCCCAGGGCAGGGGGTCCCCCGGC
CCCCCGGCTCCCTGGTCCAGTGGCTTAGGCAAACCTGGTTTGGATGGGCTTCTGGGCCCCAGGA
GACAAGGGTGAAGTGGGCTCCTGGAGTTCAGGCCCCAGGGGGAGCCAGGAGCTGTGGGCCAAAA
GGACCTCTGGAGTAGACGGTGTGGGAGTCCCAGGGGCAGCAGGGTTGCCAGGACCACAGGGCCCATCA
GGGGCCAAAGGGGAGCCAGGGACCCGGGGCCCCCTGGGCTGATAGGCCCACTGGCTATGGGATGCCA
GGACTGCCAGGCCCAAGGGGGACAGGGGCCAGCTGGGGTCCCAGGACTCTGGGGGACAGGGGTGAG
CCAGGGGAGGATGGGGAGCCAGGGGAGCAGGGCCACAGGGTCTTGGGGTCCCCCTGGACTTCTGGG
TCTGCAGGGCTTCTGGCAGACGTGGGCCCCCTGGGCCTAAGGGTGAAGCAGGGCCTGGAGGACCCCA
GGAGTGCCTGGCATTGAGGTGACCAGGGGCTAGTGGCTGGCTGGGAAACAGGGTCCCAGGTGAG
AGGGGACTTCTGGGGCCATGGACCCCTGGACCAACTGGGCCAAAGGGTGAAGCCGGGTTTACGGGT
CGCCTTGAGGACCAGGGGTGGCAGGAGCCCTGGGGCAGAAAGGTGACTTGGGGCTCCCTGGGCAGCCT
GGCTTGAGGGTCCCTCAGGAATCCCAGGACTCCAGGGTCCAGCTGGCCCTATTGGGCCCAAGGCCCTG
CCGGGCCGAAGGGGAACAGGCCTGCCAGGGCCCCCTGGAGAGGGGAGAGCAGGGGAACCTGGCACG
GCTGGGCCACGGGGCCCCAGGGTCCCTGGCTCCCCTGGAATCACGGGCCCTCCGGGGCTCCGGGG
CCCCGGGACCCCTGGTCCCCCTGGGGCTTCGATGAGACTGGCATCGCAGGCTTGACCTGCCAAC
GGCGGTGTGGAGGTGCCGTGCTGGGCAAGGGGGCAAGCCACAGTTTGGGCTGGGCGAGCTGTCTGCC
CATGCCACACCGGCTTCACTGCGGTGCTCACCTCGCCCTCCCCGCTCGGGCATGCCCGTGAATTT
GACCGGACTCTACAATGGCCACAGCGGCTACAACCCAGCCACTGGCATCTTACCTGCCCTGTGGGC
GGCGTCTACTACTTTGCTTACCATGTGCACGTCAAGGGCACCAACGTGTGGTGGCCTGTACAAGAAC
AACGTGCCGGCCACTATACCTACGATGAGTACAAGAAGGGCTACCTGGACCAGGCATCTGGTGGGGCC
GTGCTCCAGCTGCGGCCAACGACCAGGTCTGGGTGCAGATGCCGTGGACCAGGCCAACGGCCTACT
TCCACGGAGTACATCCACTCCTCTTTTCAAGATTCTTGCTCTGCCCCACA
ACGCGTACGCGGCCGCTCGAG - GFP Tag - GTTTAAAC
```

Protein Sequence:

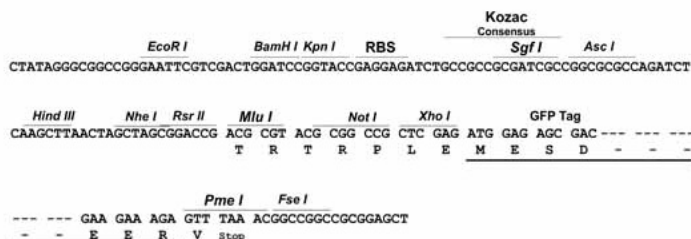
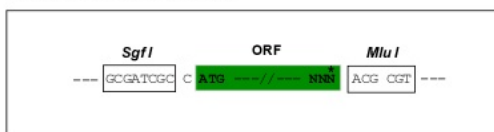
>Peptide sequence encoded by RG239174
 Blue=ORF Red=Cloning site Green=Tag(s)

```
MPLPLLMDLKGEPGPPGKPGPRGPPGPPGFPKPGMGKPLHGQPGPAGPPGFSRMGKAGPPGLPGKV
GPPGQPLRGEPIRGDQGLRPPGPPGLPGPSGITIPGKPGAQGVPPGPFQGEPPQGEPPGDRG
LKGDNGVQPLPGAPGQGGAPPPGLPGPAGLGPGLDGLPGAPGDKGESGPPGVPGRGEPGAVGPK
GPPGVDGVGVPAAAGLPGPQGPSAGKGEPTGRPPGLIGPTGYGMPGLPGPKGDRGPAVPLLDGRGE
PGEDGEPGEQGPQGLGGPPGLPGSAGLPGRRGPPGPKGEAGPGPPGVPVIRGDQGPSGLAGKPGVPE
RGLPGAHPGPPGTPGKGEPTGTRPGGPGVAGALGQKGDGLPGQPLRGPSPGIPGLQGPAGPIGPQGL
PGLKGEPLPGPPGGRAGEPTAGTPPPGVPSPGITGPPGPPGPPGPPGAPGAFDEGTIAGLHLPN
GGVEGAVLGKGGKPFGLGELSAHATPAFTAVLTSPFPASGMPVKFDRTLYNGHSGYNPATGIFTCPVG
GVYYFAYHVHVKGTNVWVALYKNNVPATYTYDEYKKGYLDAQSGGAVLQLRPNDQVWVQMPDQANGLY
STEYIHSFSGFLLCPT
TRTRPLEMESDESGLPAMEIECRITGTLNGVEFELVGGEGTPEQGRMTNKMSTKGALTFSPYLLSHV
MGYGFYHFGTYPSGYENPFLHAINNGGYNTRIEKYEDGGVLHVSFSYRYEAGRVIGDFKVMGTGFPED
SVIFTDKIIRSNATVEHLHPMGDNDLDGSFTRTFLRDGGYSSVVDSHMHFKSAIHPSILQNGGPMFA
FRRVEEDHSNTELGIVEYQHAFKTPDADAGEERV
```

Restriction Sites: Sgfl-MluI

Cloning Scheme:

Cloning sites used for ORF Shutting:



ACCN: NM_001294347

ORF Size: 1914 bp

OTI Disclaimer: The molecular sequence of this clone aligns with the gene accession number as a point of reference only. However, individual transcript sequences of the same gene can differ through naturally occurring variations (e.g. polymorphisms), each with its own valid existence. This clone is substantially in agreement with the reference, but a complete review of all prevailing variants is recommended prior to use. [More info](#)

OTI Annotation: This clone was engineered to express the complete ORF with an expression tag. Expression varies depending on the nature of the gene.

Components: The ORF clone is ion-exchange column purified and shipped in a 2D barcoded Matrix tube containing 10ug of transfection-ready, dried plasmid DNA (reconstitute with 100 ul of water).

RefSeq: [NM_001294347.2](#)

RefSeq Size: 4397 bp

RefSeq ORF: 1917 bp

Locus ID: 1296

UniProt ID: [P25067](#)

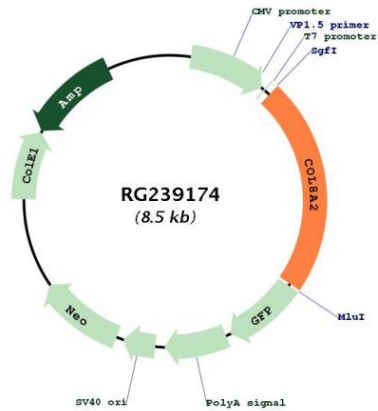
Cytogenetics: 1p34.3

Protein Families: Druggable Genome

MW: 61.2 kDa

Gene Summary:

This gene encodes the alpha 2 chain of type VIII collagen. This protein is a major component of the basement membrane of the corneal endothelium and forms homo- or heterotrimers with alpha 1 (VIII) type collagens. Defects in this gene are associated with Fuchs endothelial corneal dystrophy and posterior polymorphous corneal dystrophy type 2. Alternative splicing results in multiple transcript variants. [provided by RefSeq, Jun 2014]

Product images:


Circular map for RG239174