

Product datasheet for **RG239164**

VAP1 (AOC3) (NM_001277731) Human Tagged ORF Clone

Product data:

Product Type:	Expression Plasmids
Product Name:	VAP1 (AOC3) (NM_001277731) Human Tagged ORF Clone
Tag:	TurboGFP
Symbol:	AOC3
Synonyms:	HPAO; SSAO; VAP-1; VAP1
Mammalian Cell Selection:	Neomycin
Vector:	pCMV6-AC-GFP (PS100010)
E. coli Selection:	Ampicillin (100 ug/mL)



[View online »](#)

ORF Nucleotide Sequence:

>RG239164 representing NM_001277731.
 Blue=ORF Red=Cloning site Green=Tag(s)

```
GCTCGTTAGTGAACCGTCAGAATTTTGTAAACGACTCACTATAGGGCGGCCGGGAATTCGTGACTG
GATCCGGTACCGAGGAGATCTGCCGCCCGGATCGCC
ATGAACCAGAAGACAATCCTCGTGCTCATTCTGGCCGTCATCACCATCTTTCGCTTGGTTTGTGTC
CTGCTGGTGGGAGGGTGGAGATGGGGTGAACCCAGCCAGCTTCCCCATTGCCCTCTGTATCTCCC
AGTGCCAGCCTTGGACACACCCTGGCCAGAGCCAGCTGTTTGACAGCCTGAGCCGAGAGGAGCTGACG
GCTGTGATGCGCTTCTGACCCAGCGGCTGGGGCCAGGGCTGGTGGATGCAGCCAGGCCCGGCCCTCG
GACAACTGTGCTTCTCAGTGGAGTTGCAGCTGCCTCCCAAGGCTGCAGCCCTGGCTCACTTGGACAGG
GGGAGCCCCCACCTGCCGGGAGGCACTGGCCATCGTCTTCTTGGCAGGCAACCCAGCCCAACGTG
AGTGAGCTGGTGGTGGGGCCACTGCCTCACCCCTCTACATGCGGGACGTGACTGTGGAGCGTCATGGA
GGCCCCCTGCCCTATCACCGACGCCCGTGTGTTCCAAGGTACCTGGACATAGACCAGATGATCTTC
AACAGAGAGCTGCCCCAGGCTTCTGGGCTTCTCCACCCTGTTGCTTCTACAAGCACGGGGACGGAAC
CTGGTGACAATGACCACGGCTCCCGTGGTCTGCAATCAGGGGACCGGGCCACCTGGTTTGGCCTCTAC
TACAACATCTCGGGCGCTGGGTTCTTCCGACACAGTGGGCTTGGAGCTGCTAGTGAACCACAAGGCC
CTTGACCCCTGCCCGCTGGACTATCCAGAAGGTGTTCTATCAAGGCCGCTACTACGACAGCCTGGCCAG
CTGGAGGCCAGTTTGGAGCCGGCTGGTGAATGTGGTGTGATCCCAGACAATGGCACAGGTGGGTCC
TGGTCCCTGAAGTCCCCTGTGCCCGGGTCCAGCTCCCCTCTACAGTTCTATCCCAAGGCCCGCCG
TTCAGTGTCCAGGAAGTCGAGTGGCCTCCTCACTGTGGACTTCTCCTTGGCCTCGGAGCATTCACT
GGCCCAAGGATCTTTGACGTTTCGTTCCAAGGAGAAAGACTAGTTATGAGATAAGCCTCCAAGAGGCC
TTGGCCATCTATGGTGGAAATTTCCCAGCAGCAATGACGACCCGCTATGTGGATGGAGGCTTTGGCATG
GGCAACTACACCACGCCCTGACCCGTGGGTGGACTGCCCTACTTGGCCACCTACGTGGACTGGCAC
TTCCTTTTGGAGTCCAGGCCCCCAAGACAATAGTGTGATGCCTTTTGTGTGTTGAACAGAACAGGGC
CTCCCCCTGCGGCGACACCACTCAGATCTACTCGCACTACTTTGGGGTCTTGCAGAAACGGTGTG
GTCGTGAGATCTATGTCCACCTGCTCAACTATGACTATGTGTGGGATACGGTCTTCCACCCAGTGGG
GCCATAGAAATACGATTCTATGCCACGGCTACATCAGCTCGGCATTCTCTTGGTGTACTGGGAAG
TACGGGAACCAAGTGTGAGAGCACACCCTGGGCACGGTCCACACCACAGCGCCACTTCAAGGTGGAT
CTGGATGTAGCAGGACTGGAGAAGTGGGCTGGGCGGAGGATATGGTCTTGTCCCCATGGCTGTGCC
TGGAGCCCTGAGCACAGCTGCAGAGGCTGCAGGTGACCCGGAAGCTGCTGGAGATGGAGGAGCAGGCC
GCCTTCTCGTGGGAAGCGCCACCCTCGCTACCTGTACCTGGCCAGCAACCACAGCAACAAGTGGGGT
CACCCCGGGGCTACCGCATCCAGATGCTCAGCTTGTGGAGAGCGCTGCCCAAAACAGCTCCATG
GCGAGAGGCTTACAGTGGGAGAGGATTTGGTGGCTGGG
ACGCGTACGCGGCCGCTCGAG - GFP Tag - GTTTAAAC
```

Protein Sequence:

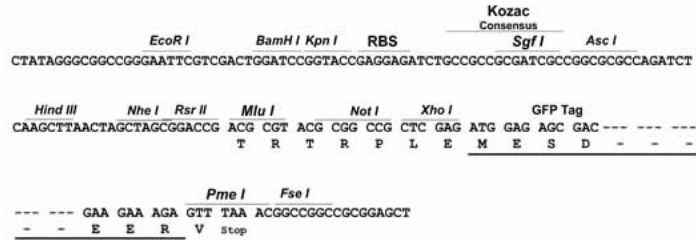
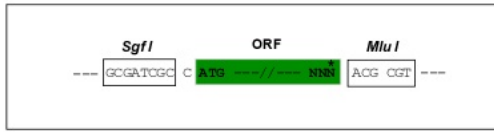
>Peptide sequence encoded by RG239164
 Blue=ORF Red=Cloning site Green=Tag(s)

```
MNQKTI L VLL I L A V I T I F A L V C V L L V G R G D G G E P S Q L P H C P S V S P S A Q P W T H P G Q S Q L F A D L S R E E L T
A V M R F L T Q R L G P L V D A A Q A R P S D N C V F S V E L Q L P P K A A L A H L D R G S P P P A R E A L A I V F F G R Q P Q P N V
S E L V V G P L P H P S Y M R D V T V E R H G G P L P Y H R R P V L F Q E Y L D I D Q M I F N R E L P Q A S G L L H H C F Y K H R G R N
L V T M T T A P R G L Q S G D R A T W F G L Y Y N I S G A G F F L H H V G L E L L V N H K A L D P A R W T I Q K V F Y Q G R Y D S L A Q
L E A Q F E A G L V N V V L I P D N G T G G S W S L K S P V P P G A P P L Q F Y P Q G P R F S V Q G S R V A S S L W T F S F G L G A F S
G P R I F D V R F Q G E R L V Y E I S L Q E A L A I Y G G N S P A M T T R Y V D G G F G M G K Y T T P L T R G V D C P Y L A T Y V D W H
F L L E S Q A P K T I R D A F C V F E Q N Q L P L R R H S D L Y S H Y F G G L A E T V L V R S M S T L L N Y D Y V W D T V F H P S G
A T E I R F Y A T G Y I S S A F L F G A T G K Y G N Q V S E H T L G T V H T S A H F K V D L D V A G L E N W W A E D M V F V P M A V P
W S P E H Q L Q R L Q V T R K L L E M E E Q A A F L V G S A T P R Y L Y L A S N H S N K W G H P R G Y R I Q M L S F A G E P L P Q N S S M
A R G F S W E R I W W P G
TRTRPLEMESDESGLPAMEIECRITGTLNGVEFELVGGEGTPEQGRMTNKMSTKGALTFSPYLLSHV
MGYGFYHFGTYPSGYENPFLHAINNGGYNTRIEKYEDGGVLHVSFSYRYEAGRVIGDFKVMGTGFPED
SVIFTDKIIRSNATVEHLHPMGDNDLDGSFTRTFSLRDGGYSSVVDSHMHFKSAIHPSILQNGGPMFA
FRRVEEDHSNTELGIVEYQHAFKTPDADAGEERV
```

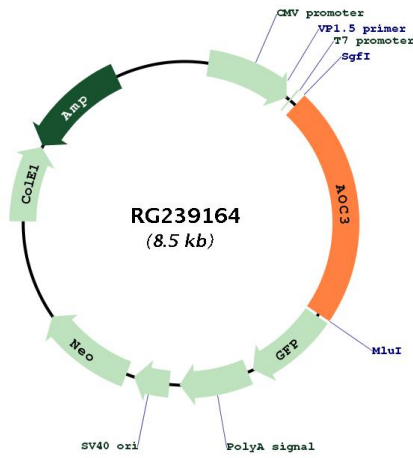
Restriction Sites: SgfI-MluI

Cloning Scheme:

Cloning sites used for ORF Shutting:



Plasmid Map:



ACCN: NM_001277731

ORF Size: 1902 bp

OTI Disclaimer:	The molecular sequence of this clone aligns with the gene accession number as a point of reference only. However, individual transcript sequences of the same gene can differ through naturally occurring variations (e.g. polymorphisms), each with its own valid existence. This clone is substantially in agreement with the reference, but a complete review of all prevailing variants is recommended prior to use. More info
OTI Annotation:	This clone was engineered to express the complete ORF with an expression tag. Expression varies depending on the nature of the gene.
Components:	The ORF clone is ion-exchange column purified and shipped in a 2D barcoded Matrix tube containing 10ug of transfection-ready, dried plasmid DNA (reconstitute with 100 ul of water).
RefSeq:	NM_001277731.1 , NP_001264660.1
RefSeq Size:	3920 bp
RefSeq ORF:	1905 bp
Locus ID:	8639
UniProt ID:	Q16853
Cytogenetics:	17q21.31
Protein Families:	Transmembrane
Protein Pathways:	beta-Alanine metabolism, Glycine, serine and threonine metabolism, Metabolic pathways, Phenylalanine metabolism, Tyrosine metabolism
MW:	71.1 kDa
Gene Summary:	This gene encodes a member of the semicarbazide-sensitive amine oxidase family. Copper amine oxidases catalyze the oxidative conversion of amines to aldehydes in the presence of copper and quinone cofactor. The encoded protein is localized to the cell surface, has adhesive properties as well as monoamine oxidase activity, and may be involved in leukocyte trafficking. Alterations in levels of the encoded protein may be associated with many diseases, including diabetes mellitus. A pseudogene of this gene has been described and is located approximately 9-kb downstream on the same chromosome. Alternative splicing results in multiple transcript variants. [provided by RefSeq, Apr 2013]