

## Product datasheet for **RG239158**

### **ANKLE1 (NM\_001278443) Human Tagged ORF Clone**

#### **Product data:**

Product Type:	Expression Plasmids
Product Name:	ANKLE1 (NM_001278443) Human Tagged ORF Clone
Tag:	TurboGFP
Symbol:	ANKLE1
Synonyms:	ANKRD41; LEM3; LEMD6
Mammalian Cell Selection:	Neomycin
Vector:	pCMV6-AC-GFP (PS100010)
E. coli Selection:	Ampicillin (100 ug/mL)



[View online »](#)

**ORF Nucleotide Sequence:**

>RG239158 representing NM\_001278443.  
 Blue=ORF Red=Cloning site Green=Tag(s)

```
GCTCGTTTAGTGAACCGTCAGAATTTTGTAAACGACTCACTATAGGGCGGCCGGGAATTCGTGCGACTG
GATCCGGTACCGAGGAGATCTGCCGCCGCGATCGCC
ATGTGGACCCCGTTCGGCGCGGGGCAGCCTGGCTGGAAACCCTGCTCGGCCCTGGAGAGGGGCCCCCC
GAGCCGAGGGGAGGAGCGCGCATGCCACAAGCCCCCGGGGAAGTAGGAAATCGACCGACCAGGCG
GTGCGCTTCGGACCCAGCCAGGGCATGTGCTCGGAGGCCCGCCTGGCTCGCAGGGCAGTAGAGGAGCTG
CTGCGCTGCGGCCGCGACCCTAATTTGGTGTAGAGGACGGCGCAGCGGCTGTGCACTTGGCGGCCGGA
GCCCGGCACCCGCGCGGCTGCGTTGCCTCGGGGCCCTACTGCGCCAAGCGGGGACCCCAACGCTCGA
TCTGTGAGGCACTGACGCCGCTGCATGTGGCCGCGCTGGGGCTGCCGCCGCGGCTGGAGCTGTG
CTGAGCCAAGGAGCGGACCCGGCGCTGCGCGACCAGGACGGACTCCGGCCGCTGGACCTGGCCCTGCAG
CAGGGACACCTGGAGTGCAGCGAGTCTGCAGGATCTCGACACGCGGACCAGGACCCGGACCCGGATC
GGGGCAGAGACTCAGGAGCCGAGCCTGCACCTGGCACCCAGGCTCTCTGGACCTACCGATGAGACG
CTGGACTCCATAGCACTCCAAAAGCAGCCATGCAGAGGTGACAACAGGGACATTGGCTTGGAGGCTGAC
CCAGGACCCCGAGCCTCCCTGTTCCCCTTGAACCTGTGGACAAACATGGGAGCTCGGCGTCCCCTCCA
GGGCACTGGGATTACAGCTCAGACGCCTCTTTCGTACAGCGGTTGAGGTCTCTGGAGCTGAGGACCCA
GCCTCGGACACTCCCCCTGGGCTGGGTCAATGCCACCGACCAGGAGGACTTCTGCATGTTGTCCAT
GCCAACAGAGGGTACCTAGGTCTCAGGGCAGGGAGGAGCAACTGAATGCCCGTCTGCAGGCCCTGACT
CTGACCCACCAATGCTGCTGGCTTCCAGTCTCCCCTTCTCCATGCCTCTCTGGACAGGAGTCCA
GCTCATAGCCCCACGGACACCAACCCCTGGAGCTTCTGACTGCCACTGCCTGTGGGAGCACCAGACA
TCCATTGATAGTACATGGCCACGCTCTGGCTGACAGAGGATGAGGCAAGCTCTACAGTGGCAGGGAA
CCTGTGCGCCCTTGGCGCACCTGCCAGTCTCCACTGTGCTGACTTGGAGTTGCTGAAGGAGCTCCGA
GCATTTGGCCAGAGTTTTTCAGGGCACAGCCTAGAACTGGCTGCAGCCCTGCGGACGGGCTGTATTCCA
GATGTCCAGGCAGATGAAGACGCGCTGGCCAGCAGTTTGGAGCAGCCAGATCCTGCCAGGAGGTGGCGG
GAGGGGTCGTGAAGTCTAGCTTACCTATCTGCTGCTGGACCCAGGGAGACTCAGGACCTGCCAGCC
CGAGCCTTCTCACTGACCCAGCTGAGCGCCTTCACTTTTATCCGTGCCATCTTCTACGTGGGCAAA
GGGACGAGGGCCCGCCATATGTCCACCTCTGGGAGGCCCTTGGTACCATGGGCGGTCAAGAAAACAG
CCCCACCAGGCCGCCCAAGGTGCGTCAGATCTGGACATCTGGGCCAGTGGTTCGGGTGTGTGCC
CTACATTGCTTCCAGCACGTGGTGTGCTGTGGAGGCTTATACACGGGAGGCGTGTATTGTGGAAGCCCTA
GGGATCCAGACGCTCACCAACCAGAAGCAAGGGCACTGCTATGGAGTGGTGGCAGGCTGGCCACCTGCT
CGTGGCCGGCGCTTGGGGTGCACCTGCTGCACCGTGCCTCCTGTCTTCTGGCTGAAGCGGAGCGA
CAGCTTATCCCCAGGACATCCAGGCCCGGGC
ACGCGTACGCGGCCGCTCGAG - GFP Tag - GTTTAAAC
```

**Protein Sequence:**

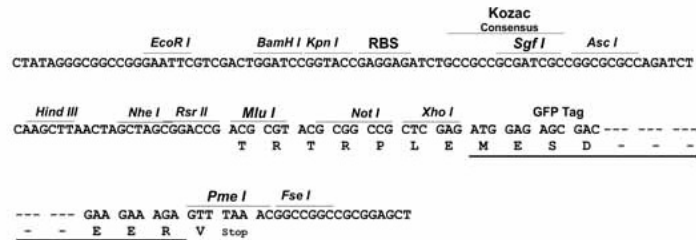
>Peptide sequence encoded by RG239158  
 Blue=ORF Red=Cloning site Green=Tag(s)

```
MWTPVRRGAAWLGTLLGPGEPPPEPRGGAHAHKPPAGSRKSTDQAVRFGPSQGMCEARLARRAVEEL
LRGADPNLVLEDGAAVHLAAGARHPRGLRCLGALLRQGGDPNARSVEALTPLHVAAAWGRRGLELL
LSQGADPALRDQDLRPLDLALQQGHLECARVLQDLDRTRTRTRIGAETQEPEPAPGTPGLSGPTDET
LDSIALQKQPCRGNRDIGLEADPGPPSLPVPLETVDKHGSSASPPGHWDYSSDSFVTAVEVSGAEDP
ASDTPPWAGSLPPTRQGLLHVHANQRVPRSQTEAELNARLQALTLTPPNAAGFQSSPSSMPLDRSP
AHSPPRTPPTGASDCHLWEHQTSIDSMATLWLTEDEASSTGGREPVGCRHLPVSTVSDLELLKGLR
ALGPEFSGHSLELAALRTGCIQVQADEDALAQQFEQDPARRWREGVVKSSFYLLLDPRETQDLPA
RAFSLTPAERLQTFIRAIFYVGKTRARPYVHLWEALGHGSRKQPHQACPQVQILDIWASGCGVVS
LHCFQHVVAVEAYTREACTIVEALGIQTLTNQKQGHYGVVAGWPPARRRRLGVHLLHRALLVFLAEGER
QLHPQDIQARG
TRTRPLEMESDESGLPAMEIECRITGTLNGVEFELVGGEGTPEQGRMTNKMSTKGALTFSPYLLSHV
MGYGFYHFGTYPSGYENPFLHAINNGGYNTRIEKYEDGGVLHVSFSYRYEAGRVIGDFKVMGTGFPED
SVIFTDKIIRSNATVEHLHPMGDNDLDGSFTRTFLRDGGYSSVVDSSHMFKSAIHPSILQNGGPMFA
FRRVEEDHSNTELGIVEYQHAFKTPDADAGEERV
```

Restriction Sites: Sgfl-MluI

Cloning Scheme:

Cloning sites used for ORF Shutting:



ACCN: NM\_001278443

ORF Size: 1896 bp

OTI Disclaimer: The molecular sequence of this clone aligns with the gene accession number as a point of reference only. However, individual transcript sequences of the same gene can differ through naturally occurring variations (e.g. polymorphisms), each with its own valid existence. This clone is substantially in agreement with the reference, but a complete review of all prevailing variants is recommended prior to use. [More info](#)

OTI Annotation: This clone was engineered to express the complete ORF with an expression tag. Expression varies depending on the nature of the gene.

Components: The ORF clone is ion-exchange column purified and shipped in a 2D barcoded Matrix tube containing 10ug of transfection-ready, dried plasmid DNA (reconstitute with 100 ul of water).

RefSeq: [NM\\_001278443.1](#), [NP\\_001265372.1](#)

RefSeq Size: 3107 bp

RefSeq ORF: 1737 bp

Locus ID: 126549

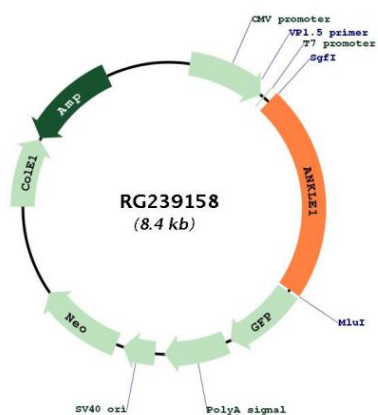
UniProt ID: [Q8NAG6](#)

Cytogenetics: 19p13.11

MW: 68.5 kDa

Gene Summary: Endonuclease that probably plays a role in the DNA damage response and DNA repair. [UniProtKB/Swiss-Prot Function]

Product images:



Circular map for RG239158