

Product datasheet for **RG239157**

ARMCX2 (NM_001282231) Human Tagged ORF Clone

Product data:

| | |
|---------------------------|--|
| Product Type: | Expression Plasmids |
| Product Name: | ARMCX2 (NM_001282231) Human Tagged ORF Clone |
| Tag: | TurboGFP |
| Symbol: | ARMCX2 |
| Synonyms: | ALEX2; GASP9 |
| Mammalian Cell Selection: | Neomycin |
| Vector: | pCMV6-AC-GFP (PS100010) |
| E. coli Selection: | Ampicillin (100 ug/mL) |



[View online »](#)

ORF Nucleotide Sequence:

>RG239157 representing NM_001282231.
 Blue=ORF Red=Cloning site Green=Tag(s)

```
GCTCGTTAGTGAACCGTCAGAATTTTGTAAACGACTCACTATAGGGCGGCCGGGAATTCGTGCGACTG
GATCCGGTACCGAGGAGATCTGCCGCCCGCATCGCC
ATGAGCCCGCTTCGGGATGCTGGCTGTGTAGCGCGGGGATAGTGATAGGGGCTGGTGCCTGGTACTGT
GTCTACAAATACACCAGGGGAGAGACCAGCAAGAAGAAGATAAGCCAAAGCCAAAAACCGGGCTGTG
GCTGGGACTGGAGCCAGGGCTAGAGCTGGGCTAAGAGCCGGATTACAATCGACCTTGGGTGAGGATTC
AGTCCCCCAACCCAGTCCGTGCTGAAGCAGAGGACAGGGCCAGGATGAAGCCTCTGCTCTGGACACA
GTTGGAGCTGAGGCAGTGGCCCCAGCTGCATCCAGCGCTGAGGCTCAGAGTGGGCGAGGCAGTCAAGCC
CAAGAGGCAGATGGAGCCGGGTTGGGCCAAGGCCGAATCAGTAGTTGGGGTGAATGGCTTCTGCA
ATAGCACCACTCCCGGGTGACAGAGGCCCTTGGGGTGCAGAAAGCCCTGCAATGGCAGGGGCTCCC
AAAGTGGCAGAAGCTCCAGAGAAGCGGAGACTCCAGGGCAGCGGTGCCTCTGGGACAGTGGTGCCT
ACCGAAGCGGCAGCACCCACTGAGGTGACCGAGGGTCTGGGGTGCAGCACCTACCAAGTAGCTGAA
GCTCCCGGGTGGCATCGCTACCGAGGCAGTGAAGCTCTGTGCCGGCAACGCCTACTGGGGTGCAG
GCACCTACTGGGGTGCAGAGTCTCTGGAATCTTGGTTCCTAGAACAGCGGTGGTTCCTGGAACA
TCAGCTGCCAAGAAAGCAACCCCTGGGGTGCAGTGGGGTATACCGAAAGCCACATCAGCGACTGGA
GCGGTACCCAAAGGTGGAGGCAAGGGTGTAAACAGTCCCGGAATGGGGCAAGGGCAAGGGCAAGAAA
AGCAAAGTTGAAGTAGACGAAGTGGGATGGGCTTCCGTCTGGAGATGGGGTGCAGCAGCTGTGCA
GCCTCTGCTAATGGCGGACAGGCTTTCCTGGCAGAGGTCCTGATTCTGAGGAAGGGGAGTCCGGGTGG
ACTGACACAGAGTCAGATTCAGACTCTGAGCCGAGCCAGCGCAGAGGGAGGGGAAGAAGACCCGTT
GCCATCCAGAAAGCGCCCTTCCCTTATGAAATGATGAGATTCTGGGTGCCGATCTCAGGAAGGTC
CTTGCCTTGCCTCAGAAATCTGATGATCTTTCATCCAACAGGTAGCTTGGTCACTCTGAGCAACAT
GCCAATTATTCAGCAATCAAGAGACAATCCGCAAAATGGGAGGCCTCCCAATTATTGCAACATGATC
AACAAAATGATCCACACATTAAGGAAAAAGCCTTAATGGCCATGAATAACCTGAGTGAGAATTATGAA
AATCAGGGCCGGCTTCAGGTGTACATGAATAAAGTATGATGATGATATCATGGCCTTAACCTGAAGTCA
GCAGTTCAAGTAGTTGGACTAAAATTTCTAACAAACATGACTATTACTAATGACTACCAACACTGCTT
GTCAATTCATTGCAACTTTTTCCGTTTGTATCTCAGGGAGGTGAAAAATCAAGTTGAGATTTTG
AAAATCCTTTGCAATTTTGTGAAAATCCAGATATGTTGAAGAACTTCTCAGTACCAAGTCCAGCA
TCATTTAGTTCCTCTATAATTCTACGTGGAATCAGAAATCCTTATTAATGCCCTTACTCTATTTGAG
ATTATCTATGACAATCTCAGAGCAGAAGTGTAACTATAGAGAATTCAATAAAGGTTCCCTTTTTTAC
TTATGCACTACATCTGGAGTGTGTGTTAAGAAAATTAGAGCCTTAGCAAATCACCATGACCTCTAGTG
AAAGTGAAGTTATAAACTAGTGAACAAATTC
ACGCGTACGCGGCCGCTCGAG - GFP Tag - GTTAAAC
```

Protein Sequence:

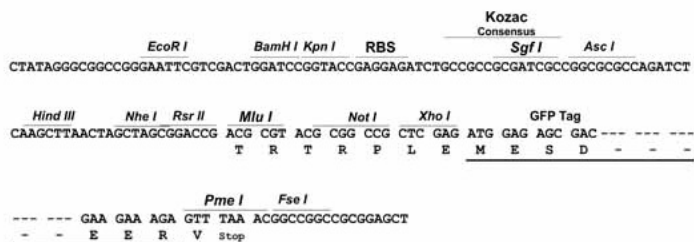
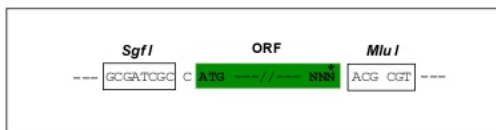
>Peptide sequence encoded by RG239157
 Blue=ORF Red=Cloning site Green=Tag(s)

```
MSRVRDAGCVAAGIVIGAGAWYCVYKYTRGRDQTKKRMKPKNRAVAGTGARARAGLRAGFTIDLGSFG
SPPTPVRAEAEDRAQDEASALDTVGAEAVAPAASSAEQSGAGSQAQADGAGVGPKAESVVGAAAMASA
IAPPPGVTEALGAAEAPAMAGAPKVAEAPREAETSRAAVPPGTVVPTAAAPTEVTEGPGVAAPTQVAE
APGVASPTAAEAPVPA TPTGAAAPTGAESPSTSGSPRTAVVPGTSAKKATPGAHTGAIPKATSATG
AVPKGGGKGVTRSRNGGKGGKSKVEVDELGMGFRPGDAAAAAASANGGQAFLEVPDSEEGESGW
TDTESDSEPETQRRGRRRPVAMQKRPFPYEIDEILGVRDLRKLALLQKSDDPFIQQVALLTLSNN
ANYSCNQETIRKLGGLPIIANMINKTDPHIKEKALMAMNNLSENYENQGRQLQVYMNKVMDDIMASNLNS
AVQVVGLKFLTNMTITNDYQHLLVNSIANFFRLLSQGGGKIKVEILKILSNFAENPDMLKKLLSTQVPA
SFSSLYNSYVESEILINALTLFEIYDNLRAEVFNRYEFNKGSLFYLCCTSGVCVKKIRALANHHDLLV
KVKVIKLVNKF
TRTRPLEMESDESGLPAMEIECRITGTLNGVEFELVGGGEGTPEQGRMTNKMSTKGALTFSPYLLSHV
MGYGFYHFGTYPSGYENPFLHAINNGGYNTRIEKYEDGGVLHVSFSYRYEAGRVIGDFKVMGTGFPED
SVIFTDKIIRSNATVEHLHPMGDNDLDGSFTRTFSLRDGGYSSVVDSSHMFKSAIHPSILQNGGPMFA
FRRVEEDHSNTELGIVEYQHAFKTPDADAGEERV
```

Restriction Sites: Sgfl-MluI

Cloning Scheme:

Cloning sites used for ORF Shuttling:



ACCN: NM_001282231

ORF Size: 1896 bp

OTI Disclaimer: The molecular sequence of this clone aligns with the gene accession number as a point of reference only. However, individual transcript sequences of the same gene can differ through naturally occurring variations (e.g. polymorphisms), each with its own valid existence. This clone is substantially in agreement with the reference, but a complete review of all prevailing variants is recommended prior to use. [More info](#)

OTI Annotation: This clone was engineered to express the complete ORF with an expression tag. Expression varies depending on the nature of the gene.

Components: The ORF clone is ion-exchange column purified and shipped in a 2D barcoded Matrix tube containing 10ug of transfection-ready, dried plasmid DNA (reconstitute with 100 ul of water).

RefSeq: [NM_001282231.2](#)

RefSeq Size: 2892 bp

RefSeq ORF: 1899 bp

Locus ID: 9823

UniProt ID: [Q7L311](#)

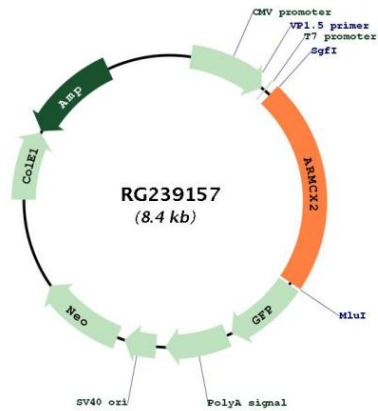
Cytogenetics: Xq22.1

Protein Families: Transmembrane

MW: 66.1 kDa

Gene Summary:

This gene encodes a protein containing a potential N-terminal transmembrane domain and multiple armadillo (arm) repeats. Proteins containing arm repeats are involved in development, maintenance of tissue integrity, and tumorigenesis. This gene is located in a cluster of related genes on chromosome X. There is a pseudogene for this gene on chromosome 7. Alternative splicing in the 5' UTR results in multiple transcript variants encoding the same protein. [provided by RefSeq, Aug 2013]

Product images:


Circular map for RG239157