

Product datasheet for **RG239151**

ZFP37 (NM_001282518) Human Tagged ORF Clone

Product data:

Product Type:	Expression Plasmids
Product Name:	ZFP37 (NM_001282518) Human Tagged ORF Clone
Tag:	TurboGFP
Symbol:	ZFP37
Synonyms:	zfp-37; ZNF906
Mammalian Cell Selection:	Neomycin
Vector:	pCMV6-AC-GFP (PS100010)
E. coli Selection:	Ampicillin (100 ug/mL)



[View online »](#)

ORF Nucleotide Sequence:

>RG239151 representing NM_001282518.
 Blue=ORF Red=Cloning site Green=Tag(s)

```
GCTCGTTAGTGAACCGTCAGAATTTTGTAAACGACTCACTATAGGGCGGCCGGGAATTCGTGCGACTG
GATCCGGTACCGAGGAGATCTGCCGCCCGGATCGCC
ATGTCGGTCTCCAGCGGGCTCCAGATTCTGACAAAAGCCAGAGACCGTGGACCGGAGGAGAAGTGC GGAA
ACGACCAAGAGGCGGGCGACCCTGGAGATGGCTGTGTCCGAGCCGAGGCCAGCGCCGCGAAGGAA
TGGAAGCAACTGGATCCTGCTCAGAGCAACCTGTATAATGATGTGATGCTGGAGAAGTACTGCAACCAA
GCCTCAATGGGGTGTCAAGCTCCCAAACAGACATGATCTCCAAGTTGGAAAAAGGAGAAGCACCATGG
TTGGGGAAGGGAAAAGACCCAGTCAAGGTTGTCCAAGTAAAATAGCAAGACCAAGCAAAAAGAACT
GATGGAAAAGTCCAGAAAGATGATGACCAGCTTAAAAATCCAGAAATCTAAAACAACTCCTCAGG
GAAGTTGCAGTCAAGAAGAAAACCAAGCTAAGAAGAATGGCAGTACTGTGGTTCACTGGGAAAAAAA
AATAATTTGCATAAAAAACATGTTCTTCAAAGAAAAGGCTTCTTAAATTTGAGTCATGTGGAAAAATT
TTGAAACAGAATTTAGATTTACCTGATCACTCAAGAACTGTGTAAAAAGGAAATCTGATGCAGCTAAA
GAACACAAGAAGTCATCAACCATAGCTTATCTGATACAAGGAAAGGCAAAAAGCAAAGTGGAAAGAAA
CATGAGAAATATCCAGCCATAGCTCATCTGATAAGTGTAAACAAAAGTGGCAAAAACATGACAAATTA
TGCTGTATAGTTTATCCATATTAACAGGACAAAATCAAAGTGGAGAGAAACATGAGAAATCACCC
AGCCTTAGCTCATCTACTAAGCATGAAAAACCTCAAGCTTGTGTGAAACCTATGAATGTAATCAATGT
GGAAAGGTTCTCAGCCATAACAAGGACTCATTGACCATCAGAGAGTTTACTACTGGGAGAAACCATAT
GAATGTAATGAATGTGGGATAGCCTTTAGCCAAAAGTACACCTTGTGTACATCAGAGAAGTACACCC
GGAGAAAACCATATGAATGTATCAGTGTGGCAAAGCCCATGGTCATAAACATGCATCACTGACCAT
CTAAGAATTCATACTGGAGAAAAGCCCTATGAATGTGCTGAATGTGGGAAAACCTCAGACAGCTCA
AACCTTATTCAACATGTGAGATCTCACACAGGTGAGAAGCCATATGAATGTAAGGAATGTGGGAGTCT
TTTAGGTAAACTCATCTTACCGAACATGTGAGAACACATACAGGTGAAATACCATATGAATGCAAT
GAATGTGGAAAAGCCTTTAAGTATAGCTCATCCCTTACTAAACACATGAGAATTCATACAGGTGAGAAA
CCCTTTGAATGTAATGAATGTGGGAAAGCTTTAGCAAGAAGTACACCTCATTATACATCAAAGAAGT
CATACTAAGGAGAAACCTTATAATGTAATGAGTGTGGAAAAGCCTTTGGACATAGCTCATCTTACT
TACCATATGAGAAGTACATACAGGTGAAAGTCCCTTTGAATGTAATCAATGTGGGAAAGGCTTTAAACAA
ATTGAAGGCTTACTCAACATCAGAGAGTTCATACTGGAGAGAAACCGTATGAGTGAATGAATGTGGG
AAAGCCTTTAGCCAAAAGTCTCACCTCATTGTACATCAGAGAAGTCACTACTGGGAGAAACCTTATGAA
TGTAACGAATGTGAAAAGCCTTTAATGCAAAAATCACAGCTTGTATACATCAGCGATCCACACTGGA
GAAAACCTATGAATGTAATGAATGTGGGAAAACCTTCAAACAAAATGCATCCCTAACCAACATGTG
AAAACCTATTCAGAAGATAAATCTCATGAG
ACGCGTACGCGGCCGCTCGAG - GFP Tag - GTTTAAAC
```

Protein Sequence:

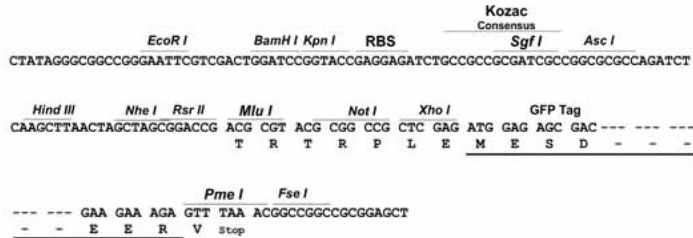
>Peptide sequence encoded by RG239151
 Blue=ORF Red=Cloning site Green=Tag(s)

```
MSVSSGVQILTKPETVDRRRSAETTKEAGRPLEMAVSEPEASAAKEWKQLDPAQSNLYNDVMLENYCNQ
ASMGCQAPKPDMSKLEKGEAPWLKGGKRPQSGCPSKIARPKQKQETDGKVKQDDDLQENIQKSNKLLR
EVAVKKKTQAKKNGSDCGSLGKKNNLHKKHVPSKKRLLKFEESCGKILKQNLDPHSRNCVKKRSDAAK
EHKKSFNHSLSDTRKGGKQTGKKHEKLSHSSSDKCNKTGKKHDKLCCSSSHIKQDKIQTGEKHEKSP
SLSSSTKHEKPQACVKPYECNQCGKVL SHKQGLIDHQRVHTGEKPYECNECGIAFSQKSHLVVHQRTH
GEKPYECIQCGKAHGKHALTDHLRIHTGEKPYECAECGKFRHSSNLIQHVSHTGEKPYECKECGKS
FRYNSL TEHVRTHTEIPYECNECGKAFKYSSSLTKHMRHTGEKPFECNECGKAFSKKSHLIIHQRT
HTKEKPYKNECGKAFGHSSSLTYHMRHTGESPFECNQCGKGFQIEGLTQHQRVHTGEKPYECNECG
KAFSQKSHLIVHQRTHTEKPYECNECEKAFNAKSQLVIHQRSHTGEKPYECNECGKTFKQNASLTKHV
KTHSEDKSHE
TRTRPLEMESDESGLPAMEIECRITGTLNGVEFELVGGGEGTPEQGRMTNKMSTKGALTFSPYLLSHV
MGYGFYHFGTYPSGYENPFLHAINNGGYNTRIEKYEDGGVLHVSFSYRYEAGRVIGDFKVMGTGFPED
SVIFTDKIIIRSNATVEHLHPMGDNDLDGSFTRTFLRDGGYSSVVDSSHMFKSAIHPSILQNGGPMFA
FRRVEEDHSNTELGIVEYQHAFKTPDADAGEERV
```

Restriction Sites: SgfI-MluI

Cloning Scheme:

Cloning sites used for ORF Shutting:



ACCN: NM_001282518

ORF Size: 1893 bp

OTI Disclaimer: The molecular sequence of this clone aligns with the gene accession number as a point of reference only. However, individual transcript sequences of the same gene can differ through naturally occurring variations (e.g. polymorphisms), each with its own valid existence. This clone is substantially in agreement with the reference, but a complete review of all prevailing variants is recommended prior to use. [More info](#)

OTI Annotation: This clone was engineered to express the complete ORF with an expression tag. Expression varies depending on the nature of the gene.

Components: The ORF clone is ion-exchange column purified and shipped in a 2D barcoded Matrix tube containing 10ug of transfection-ready, dried plasmid DNA (reconstitute with 100 ul of water).

RefSeq: [NM_001282518.2](#)

RefSeq Size: 2909 bp

RefSeq ORF: 1896 bp

Locus ID: 7539

UniProt ID: [Q9Y6Q3](#)

Cytogenetics: 9q32

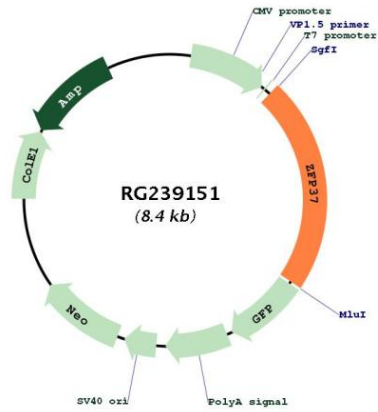
Protein Families: Transcription Factors

MW: 71.8 kDa

Gene Summary:

This gene encodes a transcription factor that belongs to a large family of zinc finger proteins. A similar protein in mouse is thought to play a role in regulating the structures of the nucleolus and centromere in neurons. Alternate splicing results in multiple transcript variants. [provided by RefSeq, Sep 2013]

Product images:



Circular map for RG239151