

## Product datasheet for **RG239141**

### LGR7 (RXFP1) (NM\_001253730) Human Tagged ORF Clone

#### Product data:

Product Type:	Expression Plasmids
Product Name:	LGR7 (RXFP1) (NM_001253730) Human Tagged ORF Clone
Tag:	TurboGFP
Symbol:	RXFP1
Synonyms:	LGR7; RXFPR1
Mammalian Cell Selection:	Neomycin
Vector:	pCMV6-AC-GFP (PS100010)
E. coli Selection:	Ampicillin (100 ug/mL)



[View online »](#)

**ORF Nucleotide Sequence:**

>RG239141 representing NM\_001253730.  
 Blue=ORF Red=Cloning site Green=Tag(s)

```
GCTCGTTAGTGAACCGTCAGAATTTTGTAAACGACTCACTATAGGGCGGCCGGGAATTCGTGCGACTG
GATCCGGTACCGAGGAGATCTGCCGCCCGGATCGCC
ATGTCAC TTCAGTGGAACTTAATAAGAAAGCTTCCTCCTGATTGCTTCAAGAATTATCATGATCTTCAG
AAGCTGTACCTGCAAAAACAATAAGATTACATCCATCCATCTATGCTTTCAGAGGACTGAATAGCCTT
ACTAAACTGTATCTCAGTCATAACAGAATAACCTTCTGAAGCCGGGTGTTTTTGAAGATCTTCACAGA
CTAGAATGGCTGATAATTGAAGATAATCACCTCAGTCGAATTTCCCCACCAACATTTTATGGACTAAAT
TCTCTTATTCTCTAGTCTGATGAATAACGCTCCTCACCCGTTTACCTGATAAACCTCTCTGTCAACAC
ATGCCAAGACTACATTGGCTGGACCTTGAAGGCAACCATATCCATAATTTAAGAAATTTGACTTTTATT
TCCTGCAGTAATTTAACTGTTTTAGTGATGAGGAAAAACAAAATTAATCACTTAAATGAAAACTTTT
GCACCTCTCCAGAACTGGATGAATTGGATTTAGGAAGTAATAAGATTGAAAATCTTCCACCCGTTATA
TTCAAGGACCTGAAGGAGCTGTACAATGAATCTTCTATAATCCAATCCAGAAAATTCAGCAAAC
CAATTTGATTATCTTGTCAAACCTCAAGTCTCCTAGAAGGGATTGAAAATTTCAAATATCCAACAAAGG
ATGTTTAGACCTCTTATGAATCTCTCACATATATTTAAGAAATTCAGTACTGTGGGTATGCACCA
CATGTTCCGAGCTGTAACCAAAACACTGATGGAATTTATCTCTAGAGAATCTCTTGCAAGCATTATT
CAGAGAGTATTTGCTGGGTTGTATCTGCGATTAACCTGCTTGGAAACATTTTGTGCTTGCATGCGA
CCTTATATCAGGTCTGAGAAACAGCTGTATGCCATGTCAATCATTTCTCTCTGCTGTGCCGACTGCTTA
ATGGGAATATATTTATTCGTGATCGGAGGCTTTGACCTAAAGTTTCGTGGAGAATACAATAAGCATGCG
CAGCTGTGGATGGAGAGTACTCATTGTGAGCTTGTAGGATCTTTGGCCATTCTGTCCACAGAAGTATCA
GTTTTACTGTTAACATTTCTGACATTGGAAAAATACATCTGCATTGTCTATCCTTTTAGATGTGTGAGA
CCTGGAAAAATGCAGAACAAATTACAGTTCTGATTCTCATTGGATTACTGGTTTTATAGTGGCTTTCATT
CCATTGAGCAATAAGGAATTTTTCAAAAACACTATGGCACCAATGGAGTATGCTTCCCTCTTCATTCA
GAAGATACAGAAAGTATTGGAGCCAGATTTATTCAGTGGCAATTTTCTTGGTATTAATTTGGCCGCA
TTTATCATCATAGTTTTTCTATGGAAGCATGTTTTATAGTGTTTCAAAAGTCCATAACAGCAACT
GAAATACGGAATCAAGTTAAAAAGAGATGATCCTTGGCAAACGTTTTTCTTTATAGTATTTACTGAT
GCATTATGCTGGATACCCATTTTGTAGTGAATTTCTTCTACTGCTCAGGTAGAAATACCAGGTACC
ATAACCTCTTGGGTAGTATTTTTATTCTGCCATTAACAGTCTTTGAACCAATTCTCTATACTCTG
ACCACAAGACCTTTAAAGAAATGATTCATCGGTTTTGGTATAACTACAGACAAAAGAAAATCTATGGAC
AGCAAAGGTCAGAAAACATATGCTCCATCATTCTGCTGGTGGAAATGTGCCACTGCAGGAGATGCCA
CCTGAGTTAATGAAGCCGACCTTTTACATACCCTGTGAAATGTCAGTATTTCTCAATCAACGAGA
CTCAATTCCTATTCA
ACGCGTACGCGGCCGCTCGAG - GFP Tag - GTTTAAAC
```

**Protein Sequence:**

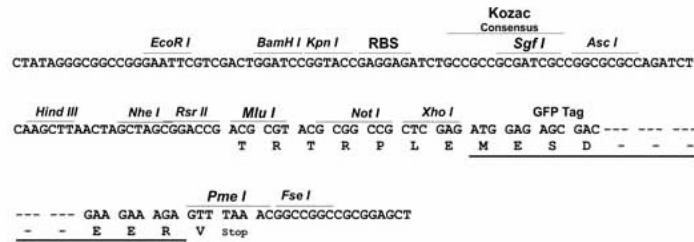
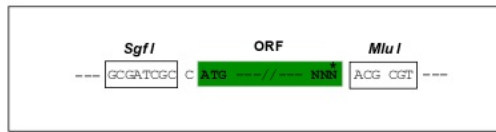
>Peptide sequence encoded by RG239141  
 Blue=ORF Red=Cloning site Green=Tag(s)

```
MSLQWNLIRKLPDFKQNYHDLQKLYLQNNKITSISYAFRGLNSLTKLYLSHNRITFLKPGVFEDLHR
LEWLIIEDNHLSRISPTFYGLNSLILLVLMNNVLRPLDKPLCQHMPRLHWDLEGNHIIHNLNLTFI
SCSNLTVLVMRKNKINHNLNENTFAPLQKLELDLGSNKIENLPLIFKDLKELSQLNLSYNIQKIQAN
QFDYLVKLSLLEGIEISNIQRMFRPLMNLSHIYFKFQYCYAPHVRSCKPNTDGISSLENLLASII
QRVFWVVSVAVTCFVNIIVICMRPYIRSENKLYAMSIISLCCADCLMGIYLFVIGGFDLFRGEYNKHA
QLWMESTHCQLVGLAILSTEVSVLLLFTLTLEKYICIVYVFRVCRPGKRTITVLILIWITGFIVAFI
PLSNKEFFKNYYGTNGVCFPLHSEDTE SIGAQIYSVAIFLGINLAAFIIIVFSYGSMFYSVHQSAITAT
EIRNQVKEMILAKRFFIVFTDALCWIPIFVVKFLLQVEIPGITSWVVFILPINSALNPILYTL
TTRPFKEMIHFRWYNYRQRKSMDSKGQKTYAPSFIVWEMWPLQEMPELMPDLFTYPCEMSLISQSTR
LNSYS
TRTRPLEME SDESGLPAMEIECRITGTLNGVEFELVGGEGTPEQGRMTNKMSTKGALTFSPYLLSHV
MGYGFYHFGTYPSGYENPFLHAINNGGYNTRIEKYEDGGVLHVSFSYRYEAGRVIGDFKVMGTGFPED
SVIFTDKIIIRSNATVEHLHPMGDNDLDGSFTRTFSLRDGGYSSVVDSDSHMHFKSAIHPSILQNGGPMFA
FRRVEEDHSNTELGIVEYQHAFKTPDADAGEERV
```

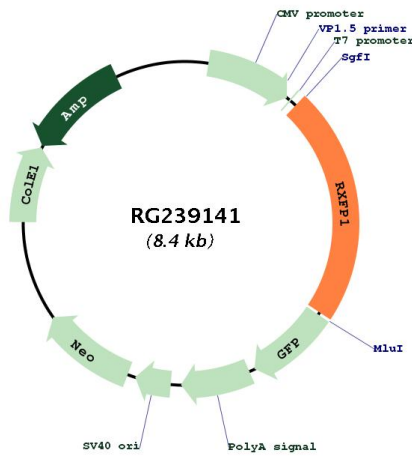
Restriction Sites: SgfI-MluI

Cloning Scheme:

Cloning sites used for ORF Shutting:



Plasmid Map:



ACCN: NM\_001253730

ORF Size: 1878 bp

<b>OTI Disclaimer:</b>	The molecular sequence of this clone aligns with the gene accession number as a point of reference only. However, individual transcript sequences of the same gene can differ through naturally occurring variations (e.g. polymorphisms), each with its own valid existence. This clone is substantially in agreement with the reference, but a complete review of all prevailing variants is recommended prior to use. <a href="#">More info</a>
<b>OTI Annotation:</b>	This clone was engineered to express the complete ORF with an expression tag. Expression varies depending on the nature of the gene.
<b>Components:</b>	The ORF clone is ion-exchange column purified and shipped in a 2D barcoded Matrix tube containing 10ug of transfection-ready, dried plasmid DNA (reconstitute with 100 ul of water).
<b>RefSeq:</b>	<a href="#">NM_001253730.1</a> , <a href="#">NP_001240659.1</a>
<b>RefSeq Size:</b>	3796 bp
<b>RefSeq ORF:</b>	1881 bp
<b>Locus ID:</b>	59350
<b>Cytogenetics:</b>	4q32.1
<b>Protein Families:</b>	Druggable Genome, GPCR, Transmembrane
<b>Protein Pathways:</b>	Neuroactive ligand-receptor interaction
<b>MW:</b>	73.1 kDa
<b>Gene Summary:</b>	This gene encodes a member of the leucine-rich repeat-containing subgroup of the G protein-coupled 7-transmembrane receptor superfamily. The encoded protein plays a critical role in sperm motility, pregnancy and parturition as a receptor for the protein hormone relaxin. Decreased expression of this gene may play a role in endometriosis. Alternatively spliced transcript variants encoding multiple isoforms have been observed for this gene. [provided by RefSeq, Dec 2011]