

Product datasheet for **RG239139**

BMAL1 (ARNTL) (NM_001297719) Human Tagged ORF Clone

Product data:

Product Type:	Expression Plasmids
Product Name:	BMAL1 (ARNTL) (NM_001297719) Human Tagged ORF Clone
Tag:	TurboGFP
Symbol:	ARNTL
Synonyms:	bHLHe5; BMAL1; BMAL1c; JAP3; MOP3; PASD3; TIC
Mammalian Cell Selection:	Neomycin
Vector:	pCMV6-AC-GFP (PS100010)
E. coli Selection:	Ampicillin (100 ug/mL)



[View online »](#)

ORF Nucleotide Sequence:

>RG239139 representing NM_001297719.
 Blue=ORF Red=Cloning site Green=Tag(s)

```
GCTCGTTAGTGAACCGTCAGAATTTTGTAAACGACTCACTATAGGGCGGCCGGGAATTCGTGACTG
GATCCGGTACCGAGGAGATCTGCCGCCCGGATCGCC
ATGGCAGACCAGAGAATGGACATTTCTCAACCATCAGTGATTTTCATGTCCCGGGCCCCACCGACCTG
CTTCCAGCTCTCTTGGTACCACTGGTGTGGATTGCAACCGCAAACGGAAAGGCAGCTCCACTGACTAC
CAAGAAAGCATGGACACAGACAAAAGATGACCCTCATGGAAGGTTAGAATATACAGAACCCAAGGAAGG
ATAAAAAATGCAAGGGAAGCTCACAGTCAGATTGAAAAGCGGCGTCGGGATAAAAATGAACAGTTTATA
GATGAATTGGCTTCTTGGTACCAACATGCAACGCAATGTCCAGGAAATTAGATAAACTTACTGTGCTA
AGGATGGCTGTTGACACATGAAAACATTAAGAGGTGCCACCAATCCATACACAGAAGCAAACACTACAAA
CCAACCTTTCTATCAGACGATGAATTGAAACACCTCATTCTCAGGGCAGCAGATGGATTTTTGTTTGTG
GTAGGATGTGACCGAGGGAAGATACTCTTGTCTCAGAGTCTGTCTTCAAGATCCTCAACTACAGCCAG
AATGATCTGATTGGTCAGAGTTTGTGACTACCTGCATCCTAAAGATATTGCCAAAGTCAAGGAGCAG
CTCTCCTCTCTGACACCGCACCCCGGGAGCGGCTCATAGATGCAAAAAGTGGACTTCCAGTTAAAAACA
GATATAACCCCTGGGCCATCTCGATTATGTTCTGGAGCAGCAGCTTCTTCTTCTGTAGGATGAAGTGT
AACAGGCCTTCAGTAAAGGTTGAAGACAAGGACTTCCCCTCTACCTGCTCAAAGAAAAAAGCAGATCGA
AAAAGCTTCTGCACAATCCACAGCACAGGCTATTTGAAAAGTGGCCACCCACAAAGATGGGGCTGGAT
GAAGACAACGAACCAGACAATGAGGGGTGAACCTCAGCTGCCTCGTCGCAATTGGACGACTGCATTCT
CATGTAGTCCACAACCAAGTGAACGGGAAATCAGGGTGAATCTATGGAATATGTTTCTCGGCACGGC
ATAGATGGAAAGTTTGTGTTTGTAGACCAGAGGGCAACAGCTATTTGGCATATTTACCACAAGAAGCTT
CTAGGCACATCGTGTATGAATATTTACCAAGATGACATAGGACATCTTGAGAATGTGATAGGCAAGT
GTTTACAGACGAGAGAAAAAATACAATAATTGCTATAAATTTAAAAATCAAAGATGCTCTTTTATC
ACACTACGGAGTCGATGGTTTCACTGATGAAACCTTGGACCAAGGAAGTAGAATATATTGTCTCAACT
AACACTGTTGTTTAGCCAACGTCCTGGAAGGCGGGACCCAACCTTCCCACAGCTCACAGCATCCCCC
CACAGCATGGACAGCATGCTGCCCTCTGGAGAAGGTGGCCCAAAGAGGACCCACCCCACTGTTCCAGGG
ATTCCAGGGGAACCCGGGCTGGGGCAGGAAAAATAGGCCGAATGATTGCTGAGGAAATCATGAAATC
CACAGGATAAGAGGGTCACTCGCCTTCTAGCTGTGGCTCCAGCCATTGAACATCACGAGTACGCCTCCC
CCTGATGCCTCTTCTCCAGGAGCAAGAAGATTTAAATGGAGGGACTCCAGACATTCTTCCAGTGGC
CTACTATCAGGCCAGGCTCAGGAGAACCAGGTTATCCATATTCTGATAGTTCTTCTATTCTTGGTGAG
AACCCCCACATAGGTATAGACATGATTGACAACGACCAAGGATCAAGTAGTCCCAGTAATGATGAGGCA
GCAATGGCTGTCATCATGAGCCTCTGGAAGCAGATGCTGGACTGGGTGGCCCTGTTGACTTTAGTGAC
TTGCCATGGCCGCTG
ACGCGTACGCGGCCGCTCGAG - GFP Tag - GTTAAAC
```

Protein Sequence:

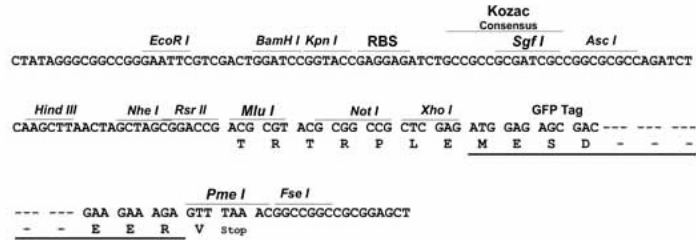
>Peptide sequence encoded by RG239139
 Blue=ORF Red=Cloning site Green=Tag(s)

```
MADQRMDISSTISDFMSPGPTDLLSSSLGTSGVDCNRKRKGSSTDYQESMDTDKDDPHGRLEYTEHQGR
IKNAREAHSQIEKRRRDKMNSFIDELASLVPTCNAMSRKLDKLTVLRMAVQHMKTLRGATNPYTEANYK
PTFLSDDELKHLILRAADGLFVVGCDRGKILFVSESVFKILNYSQNDLIGQSLFDYLHPKDIKVKKEQ
LSSSDTAPRERLIDAKTGLPVKTDITPGPSRLCSGARRSFFCRMKNRPSVKVEDKDFPSTCSKKKADR
KSFCTIHSTGYLKSPPPTKMGLEDEDNEPDNEGCNL SCLVAIGRLHSHVVPQPVNGEIRVKSMEYVSRHA
IDGKFFVVDQRATAILAYLPQELLGTSCYEYFHQDDIGHLAECHRQVLQTREKITTNCYKFKIKDGSFI
TLRSRWF S F M N P W T K E V E Y I V S T N T V V L A N V L E G G D P T F P Q L T A S P H S M D S M L P S G E G G P K R T H P T V P G
I P G G T R A G A G K I G R M I A E E I M E I H R I R G S S P S S G S S P L N I T S T P P P D A S P G G K I L N G T P D I P S S G
L L S G Q A Q E N P G Y P Y S D S S I L G E N P H I G I D M I D N D Q G S S P S N D E A A M A V I M S L L E A D A G L G P V D F S D
L P W P L
TRTRPLEMESDESGLPAMEIECRITGTLNGVEFELVGGGEGTPEQGRMTNKMSTKGALTFSPYLLSHV
MGYGFYHFGTYPSGYENPFLHAINNGGYNTRIEKYEDGGVLHVSFSYRYEAGRVIGDFKVMGTGFPED
SVIFTDKIIRSNATVEHLHPMGDNDLDGSFTRTFSLRDGGYSSVVDSSHMHFKSAIHPSILQNGGPMFA
FRRVEEDHSNTELGIVEYQHAFKTPDADAGEERV
```

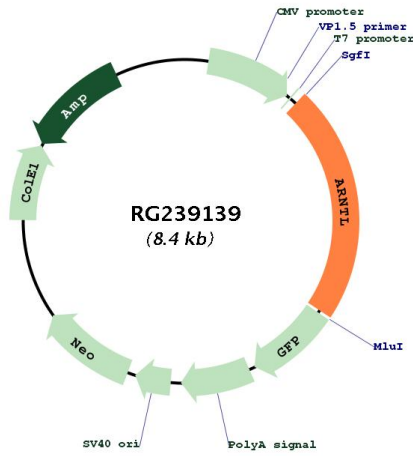
Restriction Sites: SgfI-MluI

Cloning Scheme:

Cloning sites used for ORF Shutting:



Plasmid Map:



ACCN: NM_001297719

ORF Size: 1878 bp

OTI Disclaimer:	The molecular sequence of this clone aligns with the gene accession number as a point of reference only. However, individual transcript sequences of the same gene can differ through naturally occurring variations (e.g. polymorphisms), each with its own valid existence. This clone is substantially in agreement with the reference, but a complete review of all prevailing variants is recommended prior to use. More info
OTI Annotation:	This clone was engineered to express the complete ORF with an expression tag. Expression varies depending on the nature of the gene.
Components:	The ORF clone is ion-exchange column purified and shipped in a 2D barcoded Matrix tube containing 10ug of transfection-ready, dried plasmid DNA (reconstitute with 100 ul of water).
RefSeq:	NM_001297719.2
RefSeq Size:	2866 bp
RefSeq ORF:	1881 bp
Locus ID:	406
UniProt ID:	O00327
Cytogenetics:	11p15.3
Protein Families:	Druggable Genome, Transcription Factors
Protein Pathways:	Circadian rhythm - mammal
MW:	69.2 kDa
Gene Summary:	The protein encoded by this gene is a basic helix-loop-helix protein that forms a heterodimer with CLOCK. This heterodimer binds E-box enhancer elements upstream of Period (PER1, PER2, PER3) and Cryptochrome (CRY1, CRY2) genes and activates transcription of these genes. PER and CRY proteins heterodimerize and repress their own transcription by interacting in a feedback loop with CLOCK/ARNTL complexes. Defects in this gene have been linked to infertility, problems with gluconeogenesis and lipogenesis, and altered sleep patterns. Several transcript variants encoding different isoforms have been found for this gene. [provided by RefSeq, Jul 2014]