

## Product datasheet for **RG239138**

### AXL (NM\_001278599) Human Tagged ORF Clone

#### Product data:

|                           |   |
|---------------------------|---|
| Product Type:             | Expression Plasmids                       |
| Product Name:             | AXL (NM_001278599) Human Tagged ORF Clone |
| Tag:                      | TurboGFP                                  |
| Symbol:                   | AXL                                       |
| Synonyms:                 | ARK; JTK11; Tyro7; UFO                    |
| Mammalian Cell Selection: | Neomycin                                  |
| Vector:                   | pCMV6-AC-GFP (PS100010)                   |
| E. coli Selection:        | Ampicillin (100 ug/mL)                    |



[View online »](#)

**ORF Nucleotide Sequence:**

>RG239138 representing NM\_001278599.  
 Blue=ORF Red=Cloning site Green=Tag(s)

```
GCTCGTTAGTGAACCGTCAGAATTTTGTAAACGACTCACTATAGGGCGGCCGGGAATTCGTGACTG
GATCCGGTACCGAGGAGATCTGCCGCCGCGATCGCC
ATGGGCATCCAGGCGGGAGAACCAGACCCCCAGAGAGCCCTCACCTCGCAAGCATCCGTGCCCCC
CATCAGTTCGGCTAGGCAGCTCCATCCACACCCCTTATCACATCCGCGTGGCATGCACCAGCAGC
CAGGGCCCCCTCATCTGGACCCACTGGCTTCTGTGGAGACGCCGAGGGAGTGCCCTGGGCCCCCT
GAGAACATTAGTGTACGCGGAATGGGAGCCAGGCCTTCGTGCATTGGCAAGAGCCCCGGCGCCCTG
CAGGGTACCCTGTAGGGTACCGCTGGCGTATCAAGGCCAGGACACCCAGAGGTGCTAATGGACATA
GGGCTAAGGCAAGAGGTGACCCTGGAGCTGCAGGGGGACGGGTCTGTGTCCAATCTGACAGTGTGTG
GCAGCCTACACTGCTGCTGGGATGGACCCTGGAGCTCCAGTACCCCTGGAGGCTGGCGCCAGGG
CAAGCACAGCCAGTCCACCAGCTGGTGAAGGAACCTTCAACTCTGCCTTCTCGTGGCCCTGGTGGTAT
GTACTGCTAGGAGCAGTCTGGCCGCTGCCTGTGTCTCATCTTGCTCTCTTCTTGTCCACCGCGCA
AAGAAGGAGACCCGTTATGGAGAAGTGTGTAACCAACAGTGGAAAGAGGTGAAGTGGTAGTCAGGTAC
CGCGTGGCAAGTCTACAGTCTCGGACCACTGAAGCTACCTTGAACAGCCTGGGCATCAGTGAAGAG
CTGAAGGAGAAGCTGCGGGATGTGATGGTGGACCGGCACAAGGTGGCCCTGGGGAAGACTCTGGGAGAG
GGAGAGTTGGAGCTGTGATGGAAGGCCAGCTCAACCAGGACGACTCCATCCTCAAGGTGGCTGTGAAG
ACGATGAAGATTGCCATCTGCACGAGGTGAGAGCTGGAGGATTTCTGAGTGAAGCGGTCTGCATGAAG
GAATTTGACCATCCAACGTCATGAGGCTCATCGGTGTCTGTTCCAGGGTCTGAACGAGAGAGCTTC
CCAGCACCTGTGGTCATTTACCTTTATGAAACATGGAGACCTACACAGCTTCTCCTCTATTTCCCGG
CTCGGGGACCAGCCAGTGTACCTGCCACTCAGATGCTAGTGAAGTTCATGGCAGACATGCCAGTGGC
ATGGAGTATCTGAGTACCAAGAGATTATACACCGGGACCTGGCGGCCAGGAAGTGCATGCTGAATGAG
AACATGTCCGTGTGTGGCGGACTTCCGGCTCTCCAAGAAGATCTACAATGGGGACTACTACCGCCAG
GGACGTATCGCCAAGATGCCAGTCAAGTGGATTGCCATTGAGAGTCTAGCTGACCGTGTCTACACCAGC
AAGAGCGATGTGTGGTCTTCGGGGTGACAATGTGGGAGATTGCCACAAGAGGCCAAACCCCATATCCG
GGCGTGGAGAACAGCAGATTTATGACTATCTGCGCCAGGAAATCGCCTGAAGCAGCCTGCGGACTGT
CTGGATGGACTGTATGCCTTGTGTGCGGTGCTGGGAGCTAAATCCCCAGGACCGGCCAAGTTTACA
GAGCTGCGGGAAGATTTGGAGAACACACTGAAGGCCTTGCTCCTGCCAGGAGCCTGACGAAATCCTC
TATGTCAACATGGATGAGGGTGGAGTTATCCTGAACCCCTGGAGCTGCAGGAGGAGCTGACCCCCCA
ACCCAGCCAGACCCTAAGGATTCCTGTAGCTGCCTCACTGCGGCTGAGGTCCATCCTGCTGGACGCTAT
GTCTCTGCCCTTCCACAACCCCTAGCCCCGCTCAGCCTGCTGATAGGGGCTCCCCAGCAGCCCCAGGG
CAGGAGGATGGTGCC
ACGCGTACGCGGCCGCTCGAG - GFP Tag - GTTAAAC
```

**Protein Sequence:**

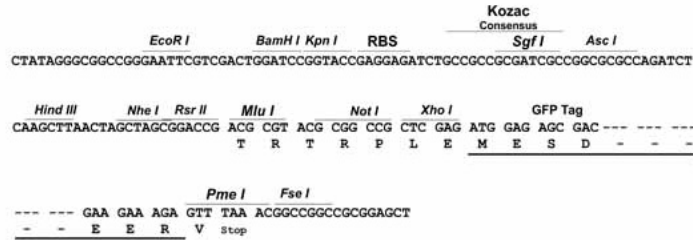
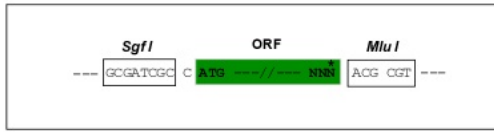
>Peptide sequence encoded by RG239138  
 Blue=ORF Red=Cloning site Green=Tag(s)

```
MGIQAGEPDPPEEPLTSQASVPPHQLRLGSLHPHTPYHIRVACTSSQGPSWTHWLPVETPEGVPLGPP
ENISATRNGSQAFVHWQEPRAPLQGTLLGYRLAYQGQDTPVLMDIGLRQEVTLELQGDGVSNLTVCV
AAYTAAGDGPWLPVPLEAWRPGQAQPVHQLVKEPSTPAFSPWVWVYLLGAVVAAACVLILALFLVHRR
KKETRYGEVFPTVERGELVVRYRVRKSYSRRTTEATLNSLGISEELKEKLRDVMVDRHKVALGKTLGE
GEFGAVMEGQLNQDSDILKVAVKTMKIAICTRSELEDFLSEAVCMKEFDHPNVMRLIGVCFQGSERESF
PAPVVILPFMKHGDLSFLLYSRLGDQPVYLPQMLVKFMADIASGMEYLSKRFIHRDLAARNMCLNE
NMSVCVADFGLSKKIYNGDYRQGRIAKMPVKWIAIESLADRVTYSKSDVWSFGVTMWEIATRGQTPYP
GVENSEIYDYLROGNRLKQPADCLDGLYALMSRCWELNPQDRPSFTELREDLENTLALPPAQEPDEIL
YVNMDEGGGYPEPPGAAGGADPPTQDPKDCSCLTAAEVHPAGRYVLCPSSTPSPAQPADRGSPAAPG
QEDGA
TRTRPLEMESDESGLPAMEIECRITGTLNGVEFELVGGEGTPEQGRMTNKMSTKGALTFSPYLLSHV
MGYGFYHFGTYPSGYENPFLHAINNGGYNTRIEKYEDGGVLHVSFSYRYEAGRVIGDFKVMGTGFPED
SVIFTDKIIRSNATVEHLHPMGDNDLDGSFTRTFSLRDGGYSSVVDSDSHMHFKSAIHPISILQNGGPMFA
FRRVEEDHSNTELGIVEYQHAFKTPDADAGEERV
```

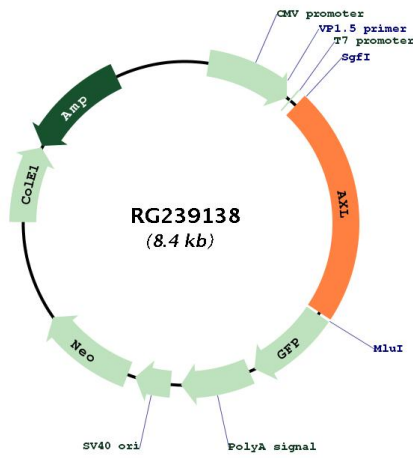
Restriction Sites: SgfI-MluI

Cloning Scheme:

Cloning sites used for ORF Shutting:



Plasmid Map:



ACCN: NM\_001278599

ORF Size: 1878 bp

|                          |  |
|--------------------------|--|
| <b>OTI Disclaimer:</b>   | The molecular sequence of this clone aligns with the gene accession number as a point of reference only. However, individual transcript sequences of the same gene can differ through naturally occurring variations (e.g. polymorphisms), each with its own valid existence. This clone is substantially in agreement with the reference, but a complete review of all prevailing variants is recommended prior to use. <a href="#">More info</a>   |
| <b>OTI Annotation:</b>   | This clone was engineered to express the complete ORF with an expression tag. Expression varies depending on the nature of the gene.   |
| <b>Components:</b>       | The ORF clone is ion-exchange column purified and shipped in a 2D barcoded Matrix tube containing 10ug of transfection-ready, dried plasmid DNA (reconstitute with 100 ul of water).   |
| <b>RefSeq:</b>           | <a href="#">NM_001278599.1</a> , <a href="#">NP_001265528.1</a>  |
| <b>RefSeq Size:</b>      | 4128 bp  |
| <b>RefSeq ORF:</b>       | 1881 bp  |
| <b>Locus ID:</b>         | 558  |
| <b>Cytogenetics:</b>     | 19q13.2  |
| <b>Protein Families:</b> | Druggable Genome, Protein Kinase, Transmembrane  |
| <b>MW:</b>               | 69.7 kDa   |
| <b>Gene Summary:</b>     | The protein encoded by this gene is a member of the Tyro3-Axl-Mer (TAM) receptor tyrosine kinase subfamily. The encoded protein possesses an extracellular domain which is composed of two immunoglobulin-like motifs at the N-terminal, followed by two fibronectin type-III motifs. It transduces signals from the extracellular matrix into the cytoplasm by binding to the vitamin K-dependent protein growth arrest-specific 6 (Gas6). This gene may be involved in several cellular functions including growth, migration, aggregation and anti-inflammation in multiple cell types. Alternative splicing results in multiple transcript variants of this gene. [provided by RefSeq, Jul 2013] |