

Product datasheet for **RG239127**

DGLUCY (NM_001286470) Human Tagged ORF Clone

Product data:

Product Type:	Expression Plasmids
Product Name:	DGLUCY (NM_001286470) Human Tagged ORF Clone
Tag:	TurboGFP
Symbol:	DGLUCY
Synonyms:	C14orf159
Mammalian Cell Selection:	Neomycin
Vector:	pCMV6-AC-GFP (PS100010)
E. coli Selection:	Ampicillin (100 ug/mL)



[View online »](#)

ORF Nucleotide Sequence:

>RG239127 representing NM_001286470.
 Blue=ORF Red=Cloning site Green=Tag(s)

```

GCTCGTTTAGTGAACCGTCAGAATTTTGTAAACGACTCACTATAGGGCGGCCGGGAATTCGTGACTG
GATCCGGTACCGAGGAGATCTGCCGCCCGGATCGCC
ATGCCCTTCACACTCCACCTGAGGTCCCGCCTCCCTCTGCCATAAAGGATTTGATTCTACAAAAGAAA
CCAAACATCAGAAATACATCCAGCATGGCTGGAGAGCTCCGACCAGCCAGCCTGGTGGCTCTGCCAGG
TCCCTTGCTCCAGCTTTTGAAGATTCTGCCAGGTCAACACTGGTCTCTACCCCTGCTGGGCCAGAGT
GAGCCAGAAAAGTGGATGCTGCCCCCTCAAGGTGCTATCTCAGAGACCAGGATGGCCATCCCCAGTTC
TGGAAATACGAGTTCGGTGCCTGCACCGGCAGCCTGGCTTCGCTGGAGCAGTACTCGGAGCAGTGAAG
GACATGGTGGCCTTCTTCTGGGCTGCAGCTTCTCCCTGGAGGAGGCCTTGGAGAAAGCGGGGCTCCCC
AGAAGAGACCCAGCAGGTACAGCCAGGCGGGTGCATACAAGACAACAGTGCCTTGTGTACCCATGCT
GGCTTCTGCTGCCCTCTGGTGGTACGATGAGGCCATTCCCAAGGACAAGCTGGAAGGGCTGGTGGC
GCCTGCTGCTCCCTCGGAGGTGAGCAGGGGCAACCTGTTACATGGGCGACCCAGAAGTGTGGGAATC
AAAGAGCTTCCAAACCTGCCTACGGGGATGCCATGGTGTGTCCCCAGGGGAGGTTCCAGTGTCTGG
CCTTCTCCGCTGACCAGTCTCGGAGCTGTGAGCAGCTGTGAGACCCCACTGGCTTTTGCCAGCATCCA
GGCTGCACAGTTATGACTGACCTGAAGGATGCAAAGGCTCCACCTGGTTGTCTCACCCAGAGAGAATT
CCAGAGGTCCATCACATTTCCAAAGATCCTCTGCACTACAGCATCGCGTCAGTCTCTGCTTCTCAGAAG
ATCAGAGAACTAGAGTCTATGATCGGCATAGACCCAGGGAACCGGGGATTGGGCACCTGCTCTGTAAA
GATGAGCTGCTGAAGGCCTCTCTCTCGCTGTCCATGCCCGCTCAGTGTCTATCACCCTGGGTTCCCC
ACACATTTCAATCATGAGCCTCCAGAAGAGACAGATGGCCACCAGGAGCTGTTGCTCTGGTTGCCTTC
CTGCAGGCCTTGGAGAAGGAGGTGCCATAATCGTTGACCAGAGGCCTGGAAGTGCACCAGAAGATT
GTTGAAGATGCTGTTGAGCAAGGTGTTCTGAAGACGCAGATCCCGATATTAACCTACCAAGGTGGATCA
GTGGAAGCTGCTCAGGCATTCTGTGCAAAAATGGGGACCCGACAGACCTAGATTTGACCACCTGGTG
GCCATAGAGCGTGCCGGAAGAGCTGCTGATGGCAATTACTACAATGCAAGGAAGTGAACATCAAGCAC
TTGGTTGACCCATTGACGATCTTTTTCTTGCTGCGAAGAAGATTCTGGAATCTCATCAACTGGAGTC
GGTATGGAGGCAACGAGCTTGGGATGGGTAAAGTCAAGGAGGCTGTGAGGAGGCACATACGGCACGGG
GATGTCATCGCCTGCGACGTGGAGGCTGACTTTGCCGTCATTGCTGGTGTCTAACTGGGAGGCTAT
GCCCTGGCCTGCGCACTTACATCTGTACTCATGTGCTGTCCACAGTCAGTACCTGAGGAAAGCAGTC
GGACCTCCAGGGCACCTGGAGATCAGGCTGGACTCAGGCCCTCCGTCGGTCATTAAGGAAGAAAAA
ATGCTGGGCATCTTGGTGCAGCACAAGTCCGGAGTGGCGTCTCGGGCATCGTGGGCATGGAGGTGGAT
GGGCTGCCCTCCACAACACCCACGCCGAGATGATCCAGAAGCTGGTGGACGTCACCACGGCACAGGTG
ACGCGTACGCGGCCGCTCGAG - GFP Tag - GTTTAAAC
  
```

Protein Sequence:

>Peptide sequence encoded by RG239127
 Blue=ORF Red=Cloning site Green=Tag(s)

```

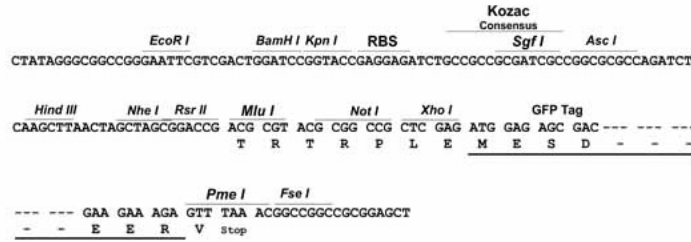
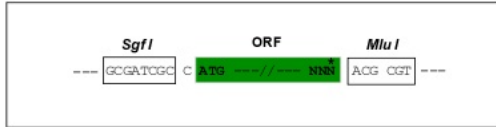
MPFTLHLRSLPSAIRSLILQKKPNIRNTSSMAGELRPASLVVLPRSLAPAFERFCQVNTGPLPLLQGS
EPEKWMLPPQGAISETRMGHPQFWKYEFGACTGSLASLEQYSEQLKDMVAFFLGCSFSLEEALAKGLP
RRDPAGHSQAGAYKTTVPCVTHAGFCCLVVTMRPIPDKLEGLVRACCSLGGEQQPVHMGDPELLGI
KELSKPAYGDAMVCPPEVVPVFWPSPLTSLGAVSSCETPLAFASIPGCTVMTDLKDAKAPPGLTPERI
PEVHHISQDPLHYSIASVSASQKIRELESMIGIDPGNRIGHLLCKDELLKASLSLSHARSVLITGFP
THFNHEPPEETDPPGVALVAFLLQALEKEVAIIVDQRAWNLHQKIVEDAVEQGVLTQIPILTYQGG
VEAAQAFLLCKNGDPQTPRFDHLVAIERAGRAADGNYYNARKMNIKHLVDPIDDLFLAAKIPGISSTGV
GDGGNELGMKVKEAVRRHIRHGDVIACDVEADFVAVIAGVSNWGGYALACALYILYSCAVHSQYLKAV
GPSRAPGDQAWTQALPSVIKEEKMLGILVQHKVRSVSGIVGMEVDGLPFHNTHAEMIQLVDVTTAQV
TRTRPLEMESDESGLPAMEIECRITGTLNGVEFELVGGGEGTPEQGRMTNKMSTKGALTFSPYLLSHV
MGYGFYHFGTYPSTYSGYENPFLHAINNGGYNTRIEKYEDGGVLHVSFSYRYEAGRVIGDFKVMGTGFPED
SVIFTDKIIIRSNATVEHLHPMGDNDLDGSFTRTFSLRDGGYSSVVDSHMHFKSAIHPSILQNGGPMFA
FRRVEEDHSNTELGIVEYQHAFKTPDADAGEERV
  
```

Restriction Sites:

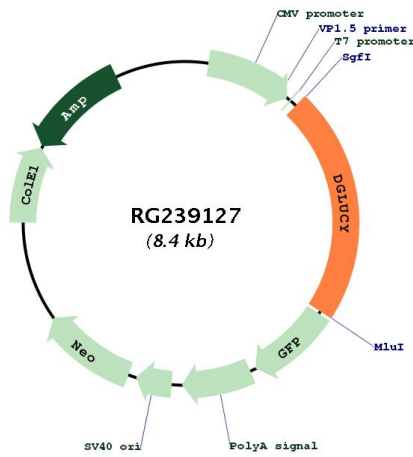
SgfI-MluI

Cloning Scheme:

Cloning sites used for ORF Shutting:



Plasmid Map:



ACCN: NM_001286470
 ORF Size: 1863 bp

OTI Disclaimer:	The molecular sequence of this clone aligns with the gene accession number as a point of reference only. However, individual transcript sequences of the same gene can differ through naturally occurring variations (e.g. polymorphisms), each with its own valid existence. This clone is substantially in agreement with the reference, but a complete review of all prevailing variants is recommended prior to use. More info
OTI Annotation:	This clone was engineered to express the complete ORF with an expression tag. Expression varies depending on the nature of the gene.
Components:	The ORF clone is ion-exchange column purified and shipped in a 2D barcoded Matrix tube containing 10ug of transfection-ready, dried plasmid DNA (reconstitute with 100 ul of water).
RefSeq:	NM_001286470.1 , NP_001273399.1
RefSeq Size:	3476 bp
RefSeq ORF:	1866 bp
Locus ID:	80017
UniProt ID:	Q7Z3D6
Cytogenetics:	14q32.11
MW:	66.9 kDa
Gene Summary:	D-glutamate cyclase that converts D-glutamate to 5-oxo-D-proline.[UniProtKB/Swiss-Prot Function]