

Product datasheet for **RG239107**

DGLUCY (NM_001286471) Human Tagged ORF Clone

Product data:

Product Type:	Expression Plasmids
Product Name:	DGLUCY (NM_001286471) Human Tagged ORF Clone
Tag:	TurboGFP
Symbol:	DGLUCY
Synonyms:	C14orf159
Mammalian Cell Selection:	Neomycin
Vector:	pCMV6-AC-GFP (PS100010)
E. coli Selection:	Ampicillin (100 ug/mL)



[View online »](#)

ORF Nucleotide Sequence:

>RG239107 representing NM_001286471.
 Blue=ORF Red=Cloning site Green=Tag(s)

```

GCTCGTTTAGTGAACCGTCAGAATTTTGTAAACGACTCACTATAGGGCGGCCGGGAATTCGTGACTG
GATCCGGTACCGAGGAGATCTGCCGCCCGGATCGCC
ATGCCCTTCACACTCCACCTGAGGTCCCGCCTCCCTCTGCCATAAAGAGTTTATTCTACAAAAGAAA
CCAAACATCAGAAATACATCCAGCATGGCTGGAGAGCTCCGACCAGCCAGCCTGGTGGCTCTGCCAGG
TCCTTGTCTCCAGCTTTTGAAGATTCTGCCAGGTCAACACTGGTCTCTACCCCTGCTGGGCCAGAGT
GAGCCAGAAAAGTGGATGCTGCCCCCTCAAGGTGCTATCTCAGAGACCAGGATGGCCATCCCCAGTTC
TGGAAATACGAGTTCGGTGCCTGCACCGGCAGCCTGGCTTCGCTGGAGCAGTACTCGGAGCAGTGAAG
GACATGGTGGCCTTCTTCTGGGCTGCAGCTTCTCCCTGGAGGAGCCTTGGAGAAAAGCGGGGCTCCCC
AGAAGAGACCCAGCAGGTACAGCCAGACAACAGTGCCTTGTGTTACCCATGCTGGCTTCTGCTGCCCT
CTGGTGGTACGATGAGGCCATTCCCAAGGACAAGCTGGAAGGGCTGGTGGGGCTGCTGCTCCCTC
GGAGTGAGCAGGGCAACCTGTTACATGGGCGACCCAGAACTGTTGGGAATCAAAGAGCTTCCAAA
CCTGCCTACGGGGATGCCATGGTGTGTCCCCAGGGGAGTTCCAGTGTCTGGCCTTCTCCGCTGACC
AGTCTCGGAGCTGTCAGCAGCTGTGAGACCCACTGGCTTTTGCCAGCATCCAGGCTGCACAGTTATG
ACTGACCTGAAGGATGCAAAGGCTCCACCTGGTTGCTCACCCAGAGAGAAATCCAGAGGTCATCAC
ATTTCCAAAGATCCTCTGCACTACAGCATCGCGTCAGTCTCTGCTTCTCAGAAGATCAGAGAAGTAGAG
TCTATGATCGGCATAGACCCAGGGAACCGGGGATTGGGCACCTGCTCTGTAAGATGAGCTGCTGAAG
GCCTCTCTCTCGTGTCCCATGCCCGCTCAGTGCATCACCACTGGGTTCCCCACACATTTCAATCAT
GAGCCTCCAGAAGAGACAGATGGCCACCAGGAGCTGTTGCTCTGGTGCCTTCTGCAGGCCTGGAG
AAGGAGGTCCGCAATAATCGTTGACCAGAGACCTGGAACCTGCACCAGAAGATTGTTGAAGATGCTGTT
GAGCAAGGTGTTCTGAAGACGCAGATCCCGATTAACCTACCAAGGTGGATCAGTGAAGCTGCTCAG
GCATTCCTGTGCAAAAATGGGGACCCGACAGACCTAGATTTGACCACCTGGTGGCCATAGAGCGTGCC
GAAGAGCTGCTGATGGCAATTACTACAATGCAAGGAAGATGAACATCAAGCACTTGGTTGACCCATT
GACGATCTTTTTCTGCTGCGAAGAAGATTCTGGAATCTCATCAACTGGAGTCGGTATGGAGGCAAC
GAGCTTGGGATGGGTAAGTCAAGGAGGCTGTGAGGAGGCACATACGGCACGGGGATGCATCGCCTGC
GACGTGGAGGCTGACTTTGCCGTATTGCTGGTGTCTAACTGGGGAGGCTATGCCCTGGCCTGCGCA
CTCTACATCCTGTACTCATGTGCTGTCCACAGTACCTGAGGAAAGCAGTCGGACCTCCAGGGCA
CCTGGAGATCAGGCTGGACTCAGGCCCTCCCGTCGGTCATTAAGGAAGAAAAAATGCTGGGCATCTTG
GTGAGCACAAGTCCGGAGTGGCGTCTCGGGCATCGTGGGCATGGAGGTGGATGGGCTGCCCTCCAC
AACACCCACGCCGAGATGATCCAGAAGCTGGTGGACGTACCACGGCACAGGTG
ACGCGTACGCGGCCGCTCGAG - GFP Tag - GTTTAAAC
  
```

Protein Sequence:

>Peptide sequence encoded by RG239107
 Blue=ORF Red=Cloning site Green=Tag(s)

```

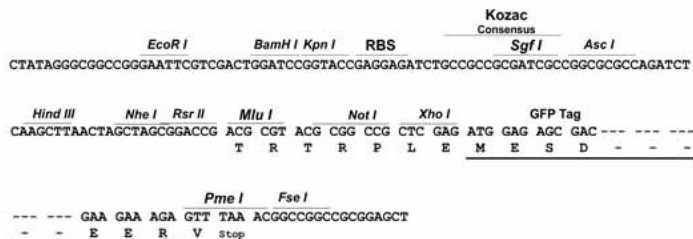
MPFTLHLRSLPSAIRSLILQKKPNIRNTSSMAGELRPASLVVLPRSLAPAFERFCQVNTGPLPLLGQS
EPEKWMLPPQGAISETRMGHPQFWKYEFGACTGSLASLEQYSEQLKDMVAFFLGCSFSLLEELEKAGLP
RRDPAGHSQTTVPCVTHAGFCCLVVTMRPIPKDKLEGLVRACCSLGGEGQPVMHGDPELLGIKELSK
PAYGDAMVCPPEVPVFWPSPLTSLGAVSSCETPLAFASIPGCTVMTDLKDAKAPPGLTPERIPVHH
ISQDPLHYSIASVSASQKIRELESMIGIDPGNRIGHLLCKDELLKASLSLSHARSVLITTFPHTFNH
EPPEETDGPFGAVALVAFLQALEKEVAIIVDQRAWNLHQKIVEDAVEQGVLTQIPILTYQGGVAAAQ
AFLCKNGDPQTPRFDHLVAIERAGRAADGNYYNARKMNIKHLVDPIDDLFLAAKIPGISSTGVGDGNN
ELGMGKVKAEVRRHIRHGDVIACDVEADFVAVIAGVSNWGGYALACALYILYSCAVHSQYLKAVGPSRA
PGDQAWTQALPSVIKEEKMLGILVQHKVRSVSGIVGMEVDGLPFHNTHAEMIQLVDVTTAQV
TRTRPLEMESDESGLPAMEIECRITGTLNGVEFELVGGGEGTPEQGRMTNKMSTKGALTFSPYLLSHV
MGYGFYHFGTYPSTYENPFLHAINNGGYNTRIEKYEDGGVLHVSFSYRYEAGRVIGDFKVMGTGFPEP
SVIFTDKIIIRSNATVEHLHPMGDNDLDGSFTRTFLSRDGGYSSVVDSHMHFKSAIHPSILQNGGPMFA
FRRVEEDHSNTELGIVEYQHAFKTPDADAGEERV
  
```

Restriction Sites:

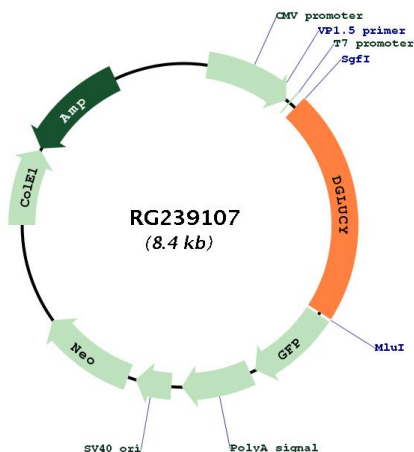
SgfI-MluI

Cloning Scheme:

Cloning sites used for ORF Shutting:



Plasmid Map:



ACCN: NM_001286471
 ORF Size: 1848 bp

OTI Disclaimer:	The molecular sequence of this clone aligns with the gene accession number as a point of reference only. However, individual transcript sequences of the same gene can differ through naturally occurring variations (e.g. polymorphisms), each with its own valid existence. This clone is substantially in agreement with the reference, but a complete review of all prevailing variants is recommended prior to use. More info
OTI Annotation:	This clone was engineered to express the complete ORF with an expression tag. Expression varies depending on the nature of the gene.
Components:	The ORF clone is ion-exchange column purified and shipped in a 2D barcoded Matrix tube containing 10ug of transfection-ready, dried plasmid DNA (reconstitute with 100 ul of water).
RefSeq:	NM_001286471.1 , NP_001273400.1
RefSeq Size:	3017 bp
RefSeq ORF:	1851 bp
Locus ID:	80017
UniProt ID:	Q7Z3D6
Cytogenetics:	14q32.11
MW:	66.4 kDa
Gene Summary:	D-glutamate cyclase that converts D-glutamate to 5-oxo-D-proline.[UniProtKB/Swiss-Prot Function]