

Product datasheet for **RG239097**

LINGO1 (NM_001301191) Human Tagged ORF Clone

Product data:

Product Type:	Expression Plasmids
Product Name:	LINGO1 (NM_001301191) Human Tagged ORF Clone
Tag:	TurboGFP
Symbol:	LINGO1
Synonyms:	LERN1; LRRN6A; MRT64; UNQ201
Mammalian Cell Selection:	Neomycin
Vector:	pCMV6-AC-GFP (PS100010)
E. coli Selection:	Ampicillin (100 ug/mL)



[View online »](#)

ORF Nucleotide Sequence:

>RG239097 representing NM_001301191.
 Blue=ORF Red=Cloning site Green=Tag(s)

```
GCTCGTTAGTGAACCGTCAGAATTTTGTAAACGACTCACTATAGGGCGGCCGGGAATTCGTGACTG
GATCCGGTACCGAGGAGATCTGCCGCCCGGATCGCC
ATGCTGGCGGGGGCGGTGAGGAGCATGCCAGCCCCCTCTGGCCTGCTGGCAGCCCATCCTCCTGCTG
GTGCTGGGCTCAGTGTCTCAGGCTCGGCCAGGGTCCCGCCCGCTGCGAGTGTCCGCCAGGAC
CGCGCTGTGCTGTGCCACCGCAAGCGCTTTGTGGCAGTCCCGAGGGCATCCCCACCGAGACGCGCTG
CTGGACCTAGGCAAGAACCGCATCAAAACGCTCAACCAGGACGAGTTCGCCAGCTTCCCGCACCTGGAG
GAGCTGGAGCTCAACGAGAACATCGTGAGCGCCGTGGAGCCCGCGCCTTCAACAACCTCTTCAACCTC
CGGACGCTGGGTCTCCGACGCAACCGCTGAAGCTCATCCCGCTAGGCGTCTTCACTGGCCTCAGCAAC
CTGACCAAGCTGGACATCAGCGAGAACAAGATCGTTATCCTACTGGACTACATGTTTCAGGACCTGTAC
AACCTCAAGTCACTGGAGTTGGCGACAATGACCTCGTCTACATCTCTCACCGCGCCTTCCAGCGCCTC
AACAGCCTGGAGCAGTACGCTGGAGAAATGCAACCTGACCTCCATCCCCACCGAGGCGCTGTCCAC
CTGCACGGCCTCATCGTCTGAGGCTCCGGCACCTCAACATCAATGCCATCCGGGACTACTCCTTCAAG
AGGCTGTACCGACTCAAGGTCTTGGAGATCTCCACTGGCCCTACTTGGACACCATGACACCCAACCTGC
CTCTACGGCCTCAACCTGACGTCCCTGTCCATCACACACTGCAATCTGACCGCTGTGCCCTACCTGGCC
GTCCGCCACCTAGTCTATCTCCGCTTCCCTAACCTCTCCTACAACCCCATCAGCACCATTGAGGGCTCC
ATGTTGCATGAGCTGCTCCGGCTGCAGGAGATCCAGCTGGTGGCGGGCAGCTGGCCGTGGTGGAGCCC
TATGCCTTCCGCGGCTCAACTACCTGCGCGTGTCAATGTCTCTGGCAACCAGCTGACCACACTGGAG
GAATCAGTCTTCCACTCGGTGGCAACCTGGAGACTCATCTGGACTCCAACCCGCTGGCCTGCGAC
TGTCCGCTCCTGTGGGTGTTCCGGCGCCGCTGGCGGCTCAACTTCAACCGGCAGCAGCCACGTCGGCC
ACGCCCGAGTTTGTCCAGGGCAAGGAGTTCAAGGACTTCCCTGATGTGCTACTGCCCAACTACTTCAAC
TGCCCGCGCGCCCGCATCCGGGACCGCAAGGCCAGCAGGTGTTGTGGACGAGGGCCACACGGTGCAG
TTTGTGTGCCGGCCGATGGCGACCCGCGCCCGCCATCCTCTGGCTCTCACCCGAAAGACCTGGTC
TCAGCCAAGAGCAATGGGCGGCTCACAGTCTTCCCTGATGGCACGCTGGAGGTGCGCTACGCCCAGGTA
CAGGACAACGGCACGTACCTGTGCATCGCGGCCAACGCGGGCGGCAACGACTCCATGCCCGCCACCTG
CATGTGCGCAGCTACTCGCCGACTGGCCCATCAGCCCAACAAGACCTTCGCTTTCATCTCAACCAG
CCGGGCGAGGGAGAGGCAACAGCACCCGCGCCACTGTGCCTTCCCTTCGACATCAAGACCCTCATC
ATCGCCACCACCTGGGTTTCATCTCTTCTGGGCGTGTCTCTTCTGCCTGGTGTGCTGTTTCTC
TGGAGCCGGGCAAGGGCAACACAAGCACAACATCGAGATCGAGTATGTCCCCGAAAGTCGGACGCA
GGCATCAGCTCCGCCGACGCGCCCGCAAGTTCACATGAAGATGATA
ACGCGTACGCGGCCGCTCGAG - GFP Tag - GTTTAAAC
```

Protein Sequence:

>Peptide sequence encoded by RG239097
 Blue=ORF Red=Cloning site Green=Tag(s)

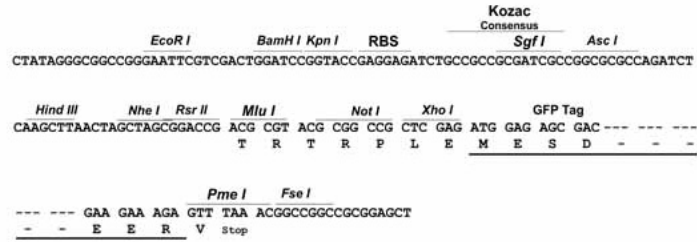
```
MLAGVRSMPSPILLACWQPILLVLSVLSGSATGCPPRCECSAQDRAVLCHRKRFVAVPEGIPTETRL
LDLGKNRIKTLNQDEFASFPHLEELNENIVSAVEPGAFNLFNLRTLGLRSNRLKLIPLGVFTGLSN
LTKLDISENKIVILLDYMFDLYNLKSLEVDNDLVYISHRAFSGLNSLEQLTLEKCNLTSIPTEALSH
LHGLIVLRLRHLNINAIRDYSFKRLYRLKVLKLEISHWPYLDTMTNCLYGLNLTSLSITHCNLTAVPYLA
VRHLVYLRFLNLSYNPISTIEGSMHELLRLQEIQLVGGQLAVVEPYAFRGLNYLRVLNVSGNQLTTLE
ESVFHSGVNLLETILDSNPLACDCRLLWVFRWRWLNFRNQPTCATPEFVQGKEFKDFPDVLLPNYFT
CRRARIRDRKAQQVFVDEGHTVQFVCRADGDPPPAILWLSPRKHLVSAKSNGRLTVFPDGTLEVRYAQQ
QDNGTYLCIAANAGGNDSPAHLHVRYSYSPDWPHPNKTFAFISNQPGEGEANSTRATVPFPFDIKTLI
IATTMGFIISFLGVVLFCLVLLFLWSRGKNTKHNIEIEYVPRKSDAGISSADAPRKFNMKMI
TRTRPLEMESDESGLPAMEIECRITGTLNGVEFELVGGGEGTPEQGRMTNKMSTKGALTFSPYLLSHV
MGYGFYHFGTYPSTYSGYENPFLHAINNGGYNTRIEKYEDGGVLHVSFSYRYEAGRVIGDFKVMGTGFPEP
SVIFTDKIIIRSNAIVEHLHPMGDNDLDGFSFTRFSLRDGGYSSVVDSHMHFKSAIHPSILQNGGPMFA
FRRVEEDHSNTELGIVEYQHAFKTPDADAGEERV
```

Restriction Sites:

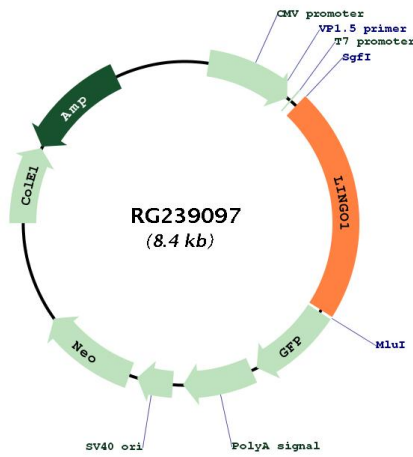
SgfI-MluI

Cloning Scheme:

Cloning sites used for ORF Shutting:



Plasmid Map:



ACCN: NM_001301191
 ORF Size: 1842 bp

OTI Disclaimer:	The molecular sequence of this clone aligns with the gene accession number as a point of reference only. However, individual transcript sequences of the same gene can differ through naturally occurring variations (e.g. polymorphisms), each with its own valid existence. This clone is substantially in agreement with the reference, but a complete review of all prevailing variants is recommended prior to use. More info
OTI Annotation:	This clone was engineered to express the complete ORF with an expression tag. Expression varies depending on the nature of the gene.
Components:	The ORF clone is ion-exchange column purified and shipped in a 2D barcoded Matrix tube containing 10ug of transfection-ready, dried plasmid DNA (reconstitute with 100 ul of water).
RefSeq:	NM_001301191.2
RefSeq Size:	3590 bp
RefSeq ORF:	1845 bp
Locus ID:	84894
UniProt ID:	Q96FE5
Cytogenetics:	15q24.3
Protein Families:	Druggable Genome, Transmembrane
MW:	69.6 kDa
Gene Summary:	Functional component of the Nogo receptor signaling complex (RTN4R/NGFR) in RhoA activation responsible for some inhibition of axonal regeneration by myelin-associated factors (PubMed:14966521, PubMed:15694321). Is also an important negative regulator of oligodendrocyte differentiation and axonal myelination (PubMed:15895088). Acts in conjunction with RTN4 and RTN4R in regulating neuronal precursor cell motility during cortical development (By similarity).[UniProtKB/Swiss-Prot Function]