

## Product datasheet for **RG239085**

### **ZNF189 (NM\_001278231) Human Tagged ORF Clone**

#### **Product data:**

Product Type:	Expression Plasmids
Product Name:	ZNF189 (NM_001278231) Human Tagged ORF Clone
Tag:	TurboGFP
Symbol:	ZNF189
Mammalian Cell Selection:	Neomycin
Vector:	pCMV6-AC-GFP (PS100010)
E. coli Selection:	Ampicillin (100 ug/mL)



[View online »](#)

**ORF Nucleotide Sequence:**

>RG239085 representing NM\_001278231.  
 Blue=ORF Red=Cloning site Green=Tag(s)

```
GCTCGTTTAGTGAACCGTCAGAATTTTGTAAACGACTCACTATAGGGCGGCCGGGAATTCGTCGACTG
GATCCGGTACCGAGGAGATCTGCCGCCGCGATCGCC
ATGGCTTCCCCGAGCCCCCGCCGGAGTCGAAGGAGGAGTGGATTATCTGGACCCAGCTCAGAGAAGC
CTGTATAAAGATGTCATGATGGAGAATTATGAAACCTGGTCTCACTGGATGTTTTGAACAGAGATAAG
GATGAGGAGCCAACTGTAAAACAAGAGATTGAAGAAATTGAGGAAGAAGTGAACCCAGGGTGTATA
GTTACAAGAATCAAAAGTGAATTTGACCAGGATCCTATGGGTAGAGAAACATTTGAACCTGTTGGTAGG
TTAGATAAAACAAAGAGGGATCTTCTATGGGAAATACCAAGGGAATCTTTGACCCAGGAACAGAGAATG
TTCAGAGAAAACACTAACATTATCCGTAAGACCAAACCTCAGAAGAGAAATGCCATAAATGTGAAGAA
TGTGAAAGGGTTTTGTCCGCAAGGCCATTTTCATTCAACATCAAAGGGTCCATACTGGTGAGAAACCT
TTTCAGTGAATGAATGTGGGAAAAGTTTTAGTCGCAGTTCATTTGTTATTGAACATCAGAGAATTCAC
ACTGGGAAAAGGCCCTATGAGTGAATTAAGTGTGAAAAACCTTTAGTGTGAGCTCAACCCTTATTAGA
CATCAGAGAATCCACACTGGAGAAAGACCTATCAGTGAATCAGTGTAAACAGAGCTTCAGCCAGAGA
AGGAGCCTTGTTAAACATCAAAGGATTCATACAGGTGAGAAACCCATAAATGTAGTGACTGTGGGAAA
GCCTTCAGTTGGAATCACACCTTATTGAGCATCAAAGAACTCACACTGGTGAGAAACCTTATCACTGT
ACCAAATGTAAGAAGAGCTTTAGTCGAAATTCATTGCTTGTGAGCATCAAAGAATTCACACTGGGGAA
AGACCCATAAATGTGGTGAATGTGGGAAAAGCCTTTCGATTAAGCACATACCTTATACAACCAAAAA
ATTCACTGGCGAGAAGCCTTTTCTTTGTATTGAGTGTGGAAAAAGTTTCAGTCGGAGCTCATTCTT
ATTGAACATCAGAGGATCCACTGGTGAAGACCTTATCAGTGCAAAGAGTGTGGGAAAAGTTTCAGT
CAGCTTTGCAACCTTACTCGTCATCAGAGAATTCACACAGGAGACAAGCCCCATAAATGTGAGGAATGT
GGAAAAGCCTTTAGTAGAAGCTCAGGTCTTATTGAGCATCAGAGAATTCACACCAGGAGAAAGCTTAT
CCATAAATGAAACTAAGGAAAAGTTTTGATCCAATTGCAGTCTTGTTATACAGCAGGAAGTCTACCTT
AAGGAGAAATCTTATAAATGTGATGAATGTGGGAAAAGCTTTTAGTGTTAGTGCTCATCTTGTACAACAT
CAAAGAATCCACACTGGTGAAGGCCCTATCTATGACTGTCTGTGGGAAAAGCTTCAGCCGGAGCTCA
TTTCTTATTGAACATCAGAGAATCCACACTGGTGAAGACCTTATCTGTGCAGACAGTGTGGAAAAAGC
TTTAGTCAGCTTTGTAATCTTATTCGACATCAGGGTGTTCACACAGGTAATAAACCCATAAATGTGAT
GAATGTGGAAAGGCCCTTAGCCGAACTCGGTCTTATTGAGCATCAGAGAATACACACAGGAGAGAAA
CCTTATAAGTGTGAGAAGTGCACAAAAGTTTCAGTCAACAGCGCAGTCTTGTCAACCATCAGAAGATC
CATGCAGAGGTGAAAACCAAGAACCATGAATGTGACGCTTGGTGAAGCCTTAAATGCCGTATT
TCTCTTATTGAGCATCAGAAATGCACACAGCATGGATGCAA
ACGCGTACGCGGCCGCTCGAG - GFP Tag - GTTTAAAC
```

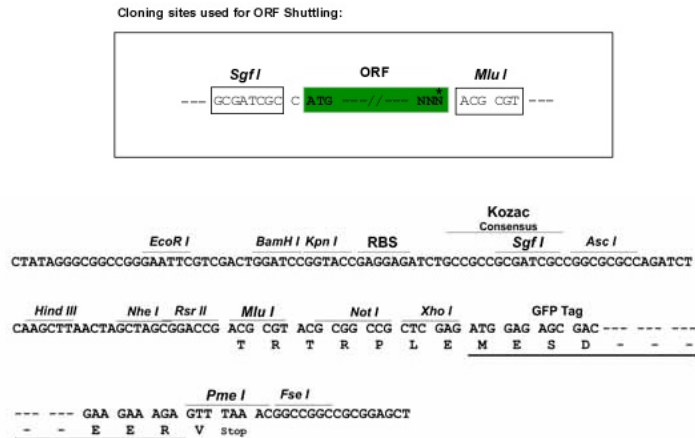
**Protein Sequence:**

>Peptide sequence encoded by RG239085  
 Blue=ORF Red=Cloning site Green=Tag(s)

```
MASPPPPESKEEWDYLDPAQRSLYKDVMMENYGNLVSLDVLNRDKDEEPTVKQIEEIEEEVEPQGVI
VTRIKSEIDQDPMGRETFFELVGRLDKQRFIFLWEIPRESLTQEQRMFRENTNIIRKRPNSEKCHKCEE
CGKGFVRKAHF IQHQRVHTGEKPFQCNCEGKFSRSSFVIEHQRIHTGERPYECNYCGKTF SVSSTLIR
HQRHTGERPYQCNQCKQSF SQRRLVKHQRHTGEKPHKCSDCGKAFSWKSHL IEHQRTHTGEKPYHC
TKCKKSF SRNSLLVEHQRIHTGERPHKCGECGKAFRLSTYLIHQHQIHTGEKPFLLCIEGKFSRSSF
IEHQRIHTGERPYQCKEKGKFSQLCNL TRHQRHTGDKPHKCECGKAFSRSSGLIQHQRIHTREKTY
PYNETKESFDPNCSLVIQQEVYPKEKSYKDECGKTF SVSAHLVQHQRHTGEKPYLCTVCGKFSRSSF
FLIEHQRIHTGERPYL CRQCGKFSQLCNLIRHQGVHTGNKPHKCECGKAFSRNSGLIQHQRIHTGEK
PYKCEKDKSFSQQRSL VNHQKIHAEVKTQETHCEDACGEAFNCRISLIHQHKLHTAWMQ
TRTRPLEMESDESGLPAMEIECRITGTLNGVEFELVGGEGTPEQGRMTNKMSTKGALTFSPYLLSHV
MGYGFYHFGTYPSGYENPFLHAINNGGYTNTRIEKYEDGGVLHVSVSYRYEAGRVIGDFKVMGTGFPE
SVIFTDKIIIRSNATVEHLHPMGDNDLDGSFTRTFSLRDGGYSSVVD SHMHFKSAIHP SILQNGGPMFA
FRRVEEDHSNTELGIVEYQHAFKTPDADAGEERV
```

**Restriction Sites:**

Sgfl-Mlul

**Cloning Scheme:**


**ACCN:** NM\_001278231

**ORF Size:** 1836 bp

**OTI Disclaimer:** The molecular sequence of this clone aligns with the gene accession number as a point of reference only. However, individual transcript sequences of the same gene can differ through naturally occurring variations (e.g. polymorphisms), each with its own valid existence. This clone is substantially in agreement with the reference, but a complete review of all prevailing variants is recommended prior to use. [More info](#)

**OTI Annotation:** This clone was engineered to express the complete ORF with an expression tag. Expression varies depending on the nature of the gene.

**Components:** The ORF clone is ion-exchange column purified and shipped in a 2D barcoded Matrix tube containing 10ug of transfection-ready, dried plasmid DNA (reconstitute with 100 ul of water).

**RefSeq:** [NM\\_001278231.2](#)

**RefSeq Size:** 3171 bp

**RefSeq ORF:** 1839 bp

**Locus ID:** 7743

**UniProt ID:** [O75820](#)

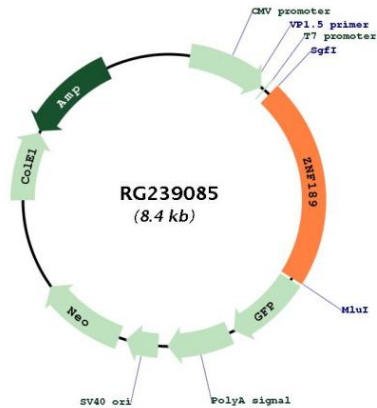
**Cytogenetics:** 9q31.1

**Protein Families:** Transcription Factors

**MW:** 71.9 kDa

**Gene Summary:**

Kruppel-like zinc finger proteins such as ZNF189 contain a conserved stretch of 7 amino acids that connects a variable number of DNA-binding zinc finger repeats of the cys(2)his(2) (C2H2) type (summarized by Odeberg et al., 1998 [PubMed 9653648]). Approximately 30% of human Kruppel-like zinc finger proteins contain an N-terminal Kruppel-associated box (KRAB) domain. The KRAB domain consists of approximately 75 amino acids that may be subdivided into an A box, which is present in every KRAB domain and is essential for transcriptional repression, and a B box, which is not always present.[supplied by OMIM, May 2010]

**Product images:**

Circular map for RG239085