

Product datasheet for **RG239082**

MCAK (KIF2C) (NM_001297657) Human Tagged ORF Clone

Product data:

Product Type:	Expression Plasmids
Product Name:	MCAK (KIF2C) (NM_001297657) Human Tagged ORF Clone
Tag:	TurboGFP
Symbol:	KIF2C
Synonyms:	CT139; KNSL6; MCAK
Mammalian Cell Selection:	Neomycin
Vector:	pCMV6-AC-GFP (PS100010)
E. coli Selection:	Ampicillin (100 ug/mL)



[View online »](#)

ORF Nucleotide Sequence:

>RG239082 representing NM_001297657.
 Blue=ORF Red=Cloning site Green=Tag(s)

```
GCTCGTTTAGTGAACCGTCAGAATTTTGTAAACGACTCACTATAGGGCGGCCGGGAATTCGTGACTG
GATCCGGTACCGAGGAGATCTGCCGCCCGCATCGCC
ATGTCCACTGTCTCAGAGCTTCGCATCACGGCTCAGGAGAATGACATGGAGTGGAGCTGCCTGCAGCT
GCAAACCTCCCGCAAGCAGTTTTTCAGTTCTCTGCCCCACTAGGCCTTCTGCCCCTGCAGTGGCTGAA
ATACCATTGAGGATGGTCAGCGAGGAGATGGAAGAGCAAGTCCATTCCATCCGAGGCAGCTCTTCTGCA
AACCTGTGAACTCAGTTCGGAGGAAATCATGTCTTGTGAAGGAAGTGGAAAAAATGAAGAACAAGCGA
GAAGAGAAGAAGGCCAGAACTCTGAAATGAGAATGAAGAGAGCTCAGGAGTATGACAGTATTTTCCA
AACTGGGAATTTGCCGAATGATTAAGAATTTGGGCTACTTTGGAATGTCATCCACTACTATGACT
GATCCTATCGAAGACACAGAATATGTGTCTGTGTAGGAAACGCCCACTGAATAAGCAAGAATTGGCC
AAGAAAGAAATGATGTGATTTCCATTCCTAGCAAGTGTCTCTTGGTACATGAACCAAGTTGAAA
GTGGACTTAACAAAGTATCTGGAGAACCAAGCATTCTGCTTTGACTTTGCATTTGATGAAACAGCTTCG
AATGAAGTTGTCTACAGTTTACAGCAAGGCCACTGGTACAGACAATCTTTGAAGTGGAAAAGCAACT
TGTTTTGCATATGGCCAGACAGGAAGTGGCAAGACACATACTATGGGCGGAGACCTCTCTGGGAAAGCC
CAGAATGCATCCAAGGGATCTATGCCATGGCCTCCCGGGACGTCTTCTCTGAAGAATCAACCCTGC
TACCGGAAGTTGGGCCTGGAAGTCTATGTGACATTCCTCGAGATCAATGGGAAGCTGTTTGACCTG
CTCAACAAGAAGGCCAAGCTGCGCGTGTGGAGGACGGCAAGCAAGGTCAGGTGCAAGTGGTGGGGCTGCAG
GAGCATCTGGTTAACTCTGCTGATGATGTCATCAAGATGATCGACATGGGCGAGCCTGCAGAACCTCT
GGGAGACATTTGCCAACTCCAATTCCTCCCGCTCCCACGCGTTCCTCAAAATATCTTCGAGCTAAA
GGGAGAATGCATGGCAAGTCTCTTTGGTAGACTGGCAGGGAATGAGCGAGGCGCGGACACTTCCAGT
GCTGACCGGACAGCCGCATGGAGGGCGCAGAAATCAACAAGAGTCTCTTAGCCCTGAAGGAGTGCATC
AGGGCCCTGGGACAGAACAAGGCTCACACCCCGTTCCGTGAGAGCAAGCTGACACAGGTGCTGAGGGAC
TCCTTCATTGGGAGAATCTAGGACTTGCATGATTGCCACGATCTCACCAGGCATAAGCTCCTGTGAA
TATACTTTAAACACCCTGAGATATGCAGACAGGGTCAAGGAGCTGAGCCCCACAGTGGGCCAGTGGGA
GAGCAGTTGATTCAAATGGAAACAGAAGAGATGGAAGCCTGCTTAACGGGGCGCTGATTCCAGGCAAT
TTATCCAAGGAAGAGGAGGAACTGTCTCCAGATGTCCAGCTTTAACGAAGCCATGACTCAGATCAGG
GAGCTGGAGGAGAAGGCTATGGAAGAGCTCAAGGAGATCATAACAGCAAGGACCAGACTGGCTTGAGCTC
TCTGAGATGACCGAGCAGCCAGACTATGACCTGGAGACCTTTGTGAACAAAGCGGAATCTGCTTGCC
CAGCAAGCAAGCATTCTCAGCCCTGCGAGATGTCATCAAGGCCTTGGCCTGGCCATGCAGCTGGAA
GAGCAGGCTAGCAGACAATAAGCAGCAAGAAACGGCCCCAG
AGCGGACCGACGCGTACGCGGCCGCTCGAG - GFP Tag - GTTTAAAC
```

Protein Sequence:

>Peptide sequence encoded by RG239082
 Blue=ORF Red=Cloning site Green=Tag(s)

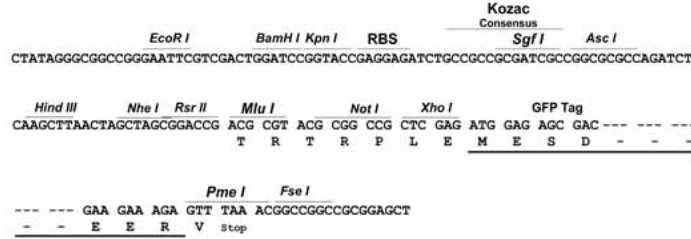
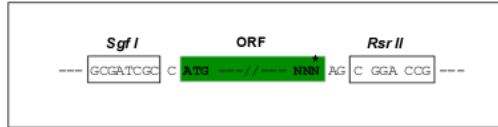
```
MSTVSELRITAQENDMEVELPAAANSRKQFSVPPAPTRPSCPAVAEIPLRMVSEEMEEQVHSIRGSSSA
NPVNSVRRKSCLVKEVEKMKNKREEKKAQNSEMRMKRAQEYDSSFNWEFARMIKEFRATLECHPLTMT
DPIEEHRCVCRKRPLNKQELAKKEIDVISIPSKCLLLVHEPKLKVDLTKYLENQAFCFDFAFDETAS
NEVVYRFARPLVQTFEGGKATCFAYGQTGSGKTHMGGDLGKAQNASKGIYAMASRDVFLKNQPC
YRKLGLEVVYTFEIFYNGKLFDLLNKKAKLRVLEDGKQQVQVVLQEHVNSADDVIKIDMGSA CRTS
GQTFANSNRRSHACFQIILRAKGRMHGKFSVLDLAGNERGADTSSADRQTRMEGAEINKSLLALKECI
RALGQNKAHTPFRESKLTQVLRDSFIGENSRTCMIAATISPGISSCEYTLNTRYADRVKELSPHSGPSG
EQLIQMTEEMEACSNALIPGNLSKEEEEELSSQMSSFNEAMTQIRELEEKAMEELKEIIQQGPDWLEL
SEMTEQPDYDLETFVNKAESALAQAKHFSALRDVIKALRLAMQLEEQASRQISSKKRPQ
SGPTRTRPLEMESDESGLPAMEIECRITGTLNGVEFELVGGGEGTPEQGRMTNMMKSTKGALTFSPYLL
SHVMGYGFYHFGTYPSTYENPFLHAINNGGYTNTRIEKYEDGGVHLVFSYRYEAGRVIGDFKVMGTGF
PEDSVIFTDKIIRSNAIVEHLHPMGDNDLDGSFTRTSLRDGGYSSVVDSHMHFKSAIHPSILQNGGP
MFAFRRVEEDHSNTELGIVEYQHAFKTPDADAGEERV
```

Restriction Sites:

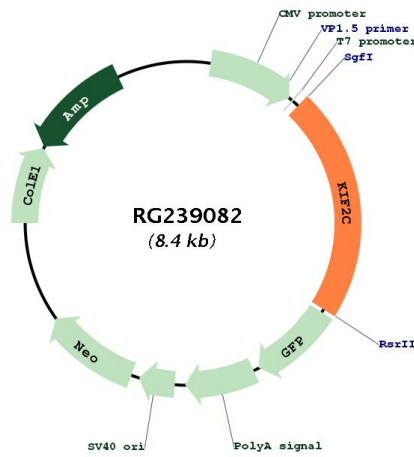
Sgfl-RsrII

Cloning Scheme:

Cloning sites used for ORF Shuttling:



Plasmid Map:



ACCN: NM_001297657
 ORF Size: 1836 bp

OTI Disclaimer:	The molecular sequence of this clone aligns with the gene accession number as a point of reference only. However, individual transcript sequences of the same gene can differ through naturally occurring variations (e.g. polymorphisms), each with its own valid existence. This clone is substantially in agreement with the reference, but a complete review of all prevailing variants is recommended prior to use. More info
OTI Annotation:	This clone was engineered to express the complete ORF with an expression tag. Expression varies depending on the nature of the gene.
Components:	The ORF clone is ion-exchange column purified and shipped in a 2D barcoded Matrix tube containing 10ug of transfection-ready, dried plasmid DNA (reconstitute with 100 ul of water).
RefSeq:	NM_001297657.2
RefSeq Size:	2701 bp
RefSeq ORF:	1839 bp
Locus ID:	11004
UniProt ID:	Q99661
Cytogenetics:	1p34.1
Protein Families:	Druggable Genome
MW:	69.3 kDa
Gene Summary:	This gene encodes a kinesin-like protein that functions as a microtubule-dependent molecular motor. The encoded protein can depolymerize microtubules at the plus end, thereby promoting mitotic chromosome segregation. Alternative splicing results in multiple transcript variants. [provided by RefSeq, Jul 2014]