

Product datasheet for **RG239050**

GGA3 (NM_001291642) Human Tagged ORF Clone

Product data:

Product Type:	Expression Plasmids
Product Name:	GGA3 (NM_001291642) Human Tagged ORF Clone
Tag:	TurboGFP
Symbol:	GGA3
Mammalian Cell Selection:	Neomycin
Vector:	pCMV6-AC-GFP (PS100010)
E. coli Selection:	Ampicillin (100 ug/mL)



[View online »](#)

ORF Nucleotide Sequence:

>RG239050 representing NM_001291642.
 Blue=ORF Red=Cloning site Green=Tag(s)

```
GCTCGTTTAGTGAACCGTCAGAATTTTGTAAACGACTCACTATAGGGCGGCCGGGAATTCGTGCGACTG
GATCCGGTACCGAGGAGATCTGCCGCCGCGATCGCC
ATGGCCCTGCCAGAAGAAGCAAAGATCAAAGACGCCTACCACATGCTGAAGAGACAGGGCATAAGTGCAG
TCTGACCCACCAATTCCGTGGATAGGACGCTGATCCCCCTCCACCACCTCGTCCAAAAACCTGTT
TTTGATGATGAGGAGAAGTCCAAGCTTTTAGCCAAGCTGCTGAAAAGCAAAAACCCAGATGACCTGCAG
GAGGCCAACAAAGCTCATCAAGTCCATGGTGAAGGAAGACGAGGCACGGATCCAGAAGGTGACCAAGCGT
CTGCACACGTTAGAGGAAGTTAACAAACAGTGAAGTCTCAGTGAAGTCTCAGTGAAGTCTCATTACAGCCAG
GAGGACTCTTCGGACGGGACAGAGAGCTGATGAAGGAGCTGTTGATCAGTGTGAGAACAAGAGGCGG
ACTTTATTTAAACTCGCCAGTGAAGTGAAGTGAAGTGAAGTGAAGTGAAGTGAAGTGAAGTGAAGTGAAGT
GACAACCTCTCCGGGTCACTCACTCTTACAAAACAATTATTGAAGGGCAGGTATCAATGGCGAGGTG
GCTACCTTAACCTGCCTGACTCGGAAGGAAACAGTCAAGTCAAGTCAAGTCAAGTCAAGTCAAGTCAAGT
GCGGAGCTGGACACGACCAACAGTTTGTCTCCGTGTTGGCCCCAGCACCTACTCCACCCTCCTCAGGC
ATCCCAATCCTCCTCCACCACCCAGGCTCAGGACCTCCACGGAGCCGCTCCTTAGCCAGGCCGAG
GCCACCCTGGGGCCAGCAGCACAAAGCAACGCCCTCCTCGGCTGGACGAGGAGCTACTCTGCTTGGGC
CTCGCCGACCCAGCCCTAATGTTCTCCCAAAGATCAGCTGGGAACAGCCAGTGGCACCTGCTCCAG
AGGGAACAGTCCGACCTGGACTTCTTACGCCCCAGGCCGGGACCGCTGCCTGTGGCGCCTCCGATGCT
CCTCTGCTCCAGCCCTCAGCCCCCTCTCAAGCAGTCCCAAGTCCACTGCCGCTCCCTTCCAGCT
CCTGTGGTCCCAGCCAGTGTCTGCCCCAGTGGGGCTCCTCCTTGTCTTCTACTGGAGTGGCCCCA
GCCTTGGCCCCAAAAGTTGAGCCCGCAGTCCCTGGCACCATTGGCTTGGCTTGGCAACAGCCGCTG
CACCACCTGGATGCCCTCGATCAGTCTTAGAAGAGGCCAAAGTGAACCTCGGGCTTGGTGAACCCACT
ACCTCCCCTCTATCCCCACCACCCAGCCAGGCCCTCCTGCCCTTCTCCACGGGGCCCGCAGC
CCGCTCTTCCAGCCACTGAGTTCCAGTCCCAGGGCAGCCCCCGAAGGGGCTGAGCTCCTCCTGGCC
AGCATCCAGTGCCTTGAATCGATCAAGCTAGCAGTGCCTTCTGTGACAGCTACGATAAAAAAC
GGCTTCCGCATCCTTCCACTTGGCAAGGAGTGTCCCCAGGACGACCTGACGTGCTGGTGGTGGTG
GTGTCCATGCTGAACACGGCTCCCTTACCTGTCAAGAGCATCGTGTGACAGGCTGCAGTCCCAAGTCA
ATGAAAGTGAAGTGCAGCCACCTTCTGGGACAGAAGTCTCTCCATTTAGCCCCACCCAGCCACCTGCA
GCCATACCCAGGTGATGTTGCTGGCAATCCACTGAAGGAGAAGGTGCGGCTTCGGTATAAGCTGACC
TTCCGCTGGGGGAGCAGCTGAGCACAGAGGTGGGCGAGGTGGACCAGTCCCTCCTGTGGAACAGTGG
GGGAACCTA
ACGCGTACGCGGCCGCTCGAG - GFP Tag - GTTTAAAC
```

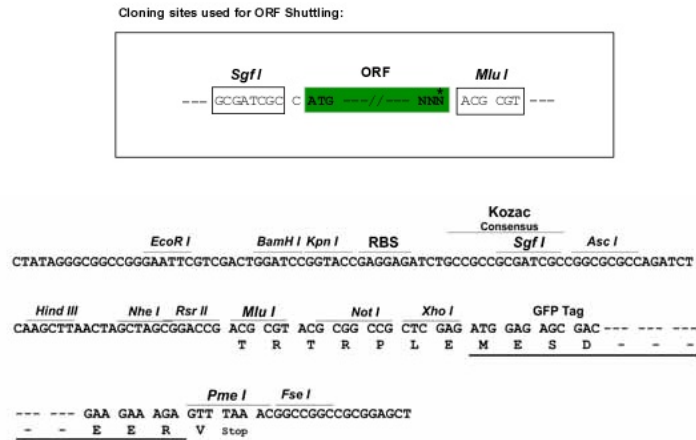
Protein Sequence:

>Peptide sequence encoded by RG239050
 Blue=ORF Red=Cloning site Green=Tag(s)

```
MALPEEAIKDAYHMLKRQIVQSDPPIPVDRTLIPSPPPRPKNPVFDEEEKSKLLAKLLKSNPDDLQ
EANKLIKSMVKEDEARIQKVTKRLHLEEVNANNVRLLEMLLHYSQEDSSDGDRELMKELFDQCENKRR
TLFKLASETEDNDNSLGDILQASDNLNRVINSYKTIIEGQVINGEVATLTPDSEGNSQCSNQGTLIDL
AELDTTNSLSSVLAPAPTPSSGIPILPPPQASGPPSRSSSQAEATLGPSSSNALSWLDEELLCLG
LADPAPNVPPKESAGNSQWHLQREQSDLDFSPRPGTACGASDAPLLQPSAPSSSSSQAPLPPFPFA
PVVPASVPAPSAGSSLFSTGVAPALAPKVEPAVPGHHGLALGNSALHHLDALDQLLEEAKVTSGLVKPT
TSPLIPTTTTPARPLLPFSTGPGSPLFQPLSFQSQGSPKGPPELSASIHVPLESIKPSALPVTAYDKN
GFRILFHFAKECPPGRPDVLLVVVSMNLNAPLPVKSIVLQAAVPKSMKVKLQPPSGTELSPFSPIQPPA
AITQVMLLANPLKEKVRRLRYKLTALGEQLSTEVEVDQFPPVEQWNL
TRTRPLEMESDESGLPAMEIECRITGTLNGVEFELVGGEGTPEQGRMTNKMSTKGALTFSPYLLSHV
MGYGFYHFGTYPSGYENPFLHAINNGGYTNRIEKYEDGGVLHVSFSYRYEAGRVIGDFKVMGTGFPE
SVIFTDKIIIRSNATVEHLHPMGDNDLDGSFTRTFSLRDGGYSSVVDSDHMHFKSAIHPSILQNGGPMFA
FRRVEEDHSNTELGIVEYQHAFKTPDADAGEERV
```

Restriction Sites:

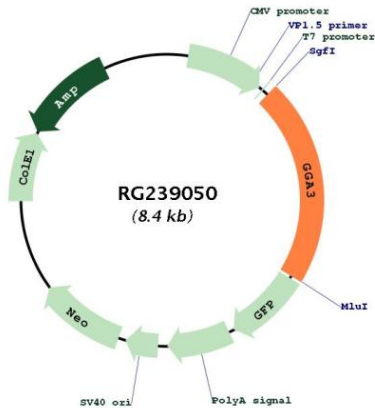
Sgfl-MluI

Cloning Scheme:


- ACCN:** NM_001291642
- ORF Size:** 1803 bp
- OTI Disclaimer:** The molecular sequence of this clone aligns with the gene accession number as a point of reference only. However, individual transcript sequences of the same gene can differ through naturally occurring variations (e.g. polymorphisms), each with its own valid existence. This clone is substantially in agreement with the reference, but a complete review of all prevailing variants is recommended prior to use. [More info](#)
- OTI Annotation:** This clone was engineered to express the complete ORF with an expression tag. Expression varies depending on the nature of the gene.
- Components:** The ORF clone is ion-exchange column purified and shipped in a 2D barcoded Matrix tube containing 10ug of transfection-ready, dried plasmid DNA (reconstitute with 100 ul of water).
- RefSeq:** [NM_001291642.2](#)
- RefSeq Size:** 3689 bp
- RefSeq ORF:** 1806 bp
- Locus ID:** 23163
- UniProt ID:** [Q9NZ52](#)
- Cytogenetics:** 17q25.1
- Protein Families:** Druggable Genome
- Protein Pathways:** Lysosome
- MW:** 64.7 kDa

Gene Summary:

This gene encodes a member of the Golgi-localized, gamma adaptin ear-containing, ARF-binding (GGA) family. This family includes ubiquitous coat proteins that regulate the trafficking of proteins between the trans-Golgi network and the lysosome. These proteins share an amino-terminal VHS domain which mediates sorting of the mannose 6-phosphate receptors at the trans-Golgi network. They also contain a carboxy-terminal region with homology to the ear domain of gamma-adaptins. Multiple alternatively spliced transcript variants have been identified in this gene. [provided by RefSeq, Feb 2010]

Product images:


Circular map for RG239050