

Product datasheet for **RG239041**

ZNF343 (NM_001282496) Human Tagged ORF Clone

Product data:

Product Type:	Expression Plasmids
Product Name:	ZNF343 (NM_001282496) Human Tagged ORF Clone
Tag:	TurboGFP
Symbol:	ZNF343
Synonyms:	dj734P14.5
Mammalian Cell Selection:	Neomycin
Vector:	pCMV6-AC-GFP (PS100010)
E. coli Selection:	Ampicillin (100 ug/mL)



[View online »](#)

ORF Nucleotide Sequence:

>RG239041 representing NM_001282496.
 Blue=ORF Red=Cloning site Green=Tag(s)

```
GCTCGTTTAGTGAACCGTCAGAATTTTGTAAACGACTCACTATAGGGCGGCCGGGAATTCGTGCGACTG
GATCCGGTACCGAGGAGATCTGCCGCCCGGATCGCC
ATGATGTTGCCTTATCCTTCAGCACTGGGAGATCAATACTGGGAAGAGATTTTGCTTCCAAGAATGGG
GAAAATGTAGAGACTATGAAGAAATGACCCAAAATCATAAAGCGAAAGGCTTGCTTCTAATGATACT
GACTGCCCCAGAAAAAGGAGGGAAAGGCCAAAATAGTGGTACCAGTTACATTCAGGGATGTGACTGTG
ATCTTCACAGAAGCAGAATGGAAGAGACTGAGTCCAGAGCAGAGGAATCTATACAAAGAAGTGATGCTG
GAGAATTACAGGAATCTTCTCTCATTGGCAGAACCAAAGCCAGAAATCTACACTTGTTCCTCCTGCCTT
CTGGCCTTCTCCTGTCAGCAGTTCCTCAGTCAACATGTACTTCAGATCTTCTGGGCTTATGTGCAGAA
AATCACTTCCATCCAGGGAATTCAGCCAGGGCATTGGAACAGCAGGGGCAGCAGTATCCCATGTA
AGCTGTTGGTTTAAAAATGCAGAAGGTGAGGAGAGAGGAGGTGGTCCAAACCCTGGTCTGCAAGGACA
GAGGAGAGAGAAACCTCAAGGGCATTCCCAGCCCACTCAAAGACAGTCAGCAAGTCTAGAAAAGGC
AACATGGTGGTAGAAACAGAGCCAGCTCAGCCCAAAGACCAAACCCTGTGCAGTAGACAAAGGCTTG
AAGGAATTAGAAACCTTGAGATTTGAGCAATCAACTGTAGAGAGTATGAACCGGACCATAACCTGGAA
TCAAACCTTATTACAAACCCGAGGACCCTCTTAGGGAAGAAGCCCTACATTTGCAGTGATTGTGGGCGA
AGCTTTAAAGATAGATCAACCCTCATCAGACACCATCGTATACACTCGATGGAGAAGCCTTATGTGTGC
AGTGAGTGCGGCGAGGTTTTAGCCAGAAGTCCAACTCAGCAGACACCAGAGAACACATTCAGAAGAG
AAGCCTTATTTGTGCAGGGAGTGTGGGCAAAGCTTTAGAAGTAAGTCCATCCTCAATAGACATCAGTGG
ACTCACTCAGAGGAGAAGCCCTATGTTTGCAGCGAGTGTGGGCGAGGCTTTAGCGAGAAGTATCCTTTC
ATCAGACACCAGAGGACACACTCCGGTGAGAAACCTATGTGTGCCTGGAGTGTGGACGAAGCTTTTGT
GATAAGTCAACCTCAGAAAACACCAGAGGATACACTCAGGGGAGAAGCCTTATGTTTGCAGGGAGTGT
GGGCGAGGCTTTAGCCAGAACTCAGATCTCATCAAACACCAGAGGACACACTTGGATGAGAAGCCTTAT
GTTTGCAGGGAGTGTGGGCGAGGCTTTTGTGACAAGTCAACCCTCATCATACACGAGCGGACGCACTCT
GGAGAGAAGCCTTATGTGTGTGGTGTGAGTGTGGCCGAGGCTTTAGTCGAAATCACTCCTCCTTGTCCAC
CAGAGGACACACTCAGGGGAGAAGCATTATGTCTGCAGGGAGTGTAGGCGAGGTTTTAGCCAGAAGTCA
AATCTCATCAGACACCAGAGGACGCACTCAAATGAGAAGCCTTATTTGCAGGGAATGTGGGCGAGGC
TTTTGTGACAAGTCAACCCTCATTGTACATGAGAGGACACACTCAGGAGAGAAGCCTTACGTGTGCAGT
GAGTGTGGCCGAGGCTTTAGCCGAAATCACTCCTCCTTGTCCACCAGAGGACACACTCAGGGGAGAAG
CATTATGTTTGTAGGGAGTGTGGGCGAGGCTTTAGTCATAAGTCAAATCTCATCAGACACCAGAGGACA
CAC
ACGCGTACGCGGCCGCTCGAG – GFP Tag – GTTTAAAC
```

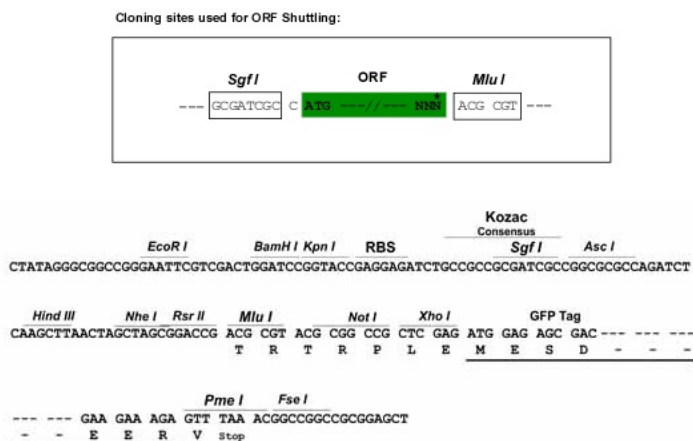
Protein Sequence:

>Peptide sequence encoded by RG239041
 Blue=ORF Red=Cloning site Green=Tag(s)

```
MMLPYPSALGDQYWEIILLPKNGENVETMKKLTQNHKAKGLPSNDTDCPQKKEGKAQIVVPVTRFDVTV
IFTEAEWKRLSPEQRNL YKEVMLENYRNLLSLAEPKPEIYTCSSCLLAFSCQQFLSQHVLQIFLGLCAE
NHFHPGNSSPGHWKQQGQQYSHVSCWFENAEGQERGGGSKPWSARTEERETSRAFPSPLQRQSASPRKG
NMVVEETEPSSAQRPNPVQLDKGLKELETLRFGA INCREYEPDHNLESNFI TNPRTLLGKKPYICSDCGR
SFKDRSTLIRHHR IHSMEKPYVCSEGRGFSQKSNLSRHQRTHSEEKPYLCRECGQSFRSKSILNRHQW
THSEEKPYVCSEGRGFSEKSSFIRHQRTHSGEKPYVCLCGRSFCDKSTLRKHQRIHSGEKPYVCREC
GRGFSQNSDLIKHQRTLDEKPYVCREGRGFCDKSTLI IHERTHSGEKPYVCGECGRGFSRKSLLL VH
QRTHSGEKHVYVCREGRGF SQKSNLIRHQRTHSNEKPYICREGRGFCDKSTLIVHERTHSGEKPYVCS
ECGRGFSRKSLLL VHQRTHSGEKHVYVCREGRGFSHKSNIIRHQRTH
TRTRPLEMESDESGLPAMEIECRITGTLNGVEFELVGGGEGTPEQGRMTNKMKSTKGALTFSPYLLSHV
MGYGFYHFGTYPSTYENPFLHAINNGGYNTRIEKYEDGGVLHVSFSYRYEAGRVIGDFKVMGTGFPEP
SVIFTDKIIIRSNATVEHLHPMGDNDLDGSFTRTFLSRDGGYSSVVDSHMHFKSAIHPSILQNGGPMFA
FRRVEEDHSNTELGIVEYQHAFKTPDADAGEERV
```

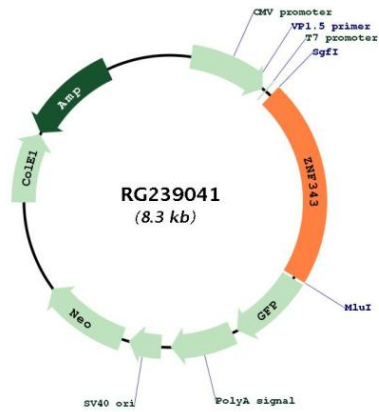
Restriction Sites:

SgfI-MluI

Cloning Scheme:


ACCN:	NM_001282496
ORF Size:	1797 bp
OTI Disclaimer:	The molecular sequence of this clone aligns with the gene accession number as a point of reference only. However, individual transcript sequences of the same gene can differ through naturally occurring variations (e.g. polymorphisms), each with its own valid existence. This clone is substantially in agreement with the reference, but a complete review of all prevailing variants is recommended prior to use. More info
OTI Annotation:	This clone was engineered to express the complete ORF with an expression tag. Expression varies depending on the nature of the gene.
Components:	The ORF clone is ion-exchange column purified and shipped in a 2D barcoded Matrix tube containing 10ug of transfection-ready, dried plasmid DNA (reconstitute with 100 ul of water).
RefSeq:	NM_001282496.2
RefSeq Size:	3602 bp
RefSeq ORF:	1800 bp
Locus ID:	79175
UniProt ID:	Q6P1L6
Cytogenetics:	20p13
Protein Families:	Transcription Factors
MW:	69.7 kDa
Gene Summary:	May be involved in transcriptional regulation.[UniProtKB/Swiss-Prot Function]

Product images:



Circular map for RG239041