

Product datasheet for **RG239024**

Estrogen Receptor 1 (ESR1) (NM_001291241) Human Tagged ORF Clone

Product data:

| | |
|---------------------------|--|
| Product Type: | Expression Plasmids |
| Product Name: | Estrogen Receptor 1 (ESR1) (NM_001291241) Human Tagged ORF Clone |
| Tag: | TurboGFP |
| Symbol: | ESR1 |
| Synonyms: | ER; Era; ESR; ESRA; ESTRR; NR3A1 |
| Mammalian Cell Selection: | Neomycin |
| Vector: | pCMV6-AC-GFP (PS100010) |
| E. coli Selection: | Ampicillin (100 ug/mL) |



[View online »](#)

ORF Nucleotide Sequence:

>RG239024 representing NM_001291241.
 Blue=ORF Red=Cloning site Green=Tag(s)

```

GCTCGTTAGTGAACCGTCAGAATTTTGTAAACGACTCACTATAGGGCGGCCGGGAATTCGTGACTG
GATCCGGTACCGAGGAGATCTGCCGCCGCGATCGCC
ATGACCATGACCCTCCACACCAAAGCATCTGGGATGGCCCTACTGCATCAGATCCAAGGGAACGAGCTG
GAGCCCCGAACCGTCCGCAGCTCAAGATCCCCCTGGAGCGGCCCTGGGCGAGGTGTACCTGGACAGC
AGCAAGCCCGCCGTGTACAACCTACCCCGAGGGCGCCGCTACGAGTTCAACGCCCGGCCCGCCCAAC
GCGCAGGTCTACGGTACAGCCGGCCTCCCTACGGCCCCGGGTCTGAGGCTGCGGCGTTCGGCTCCAAC
GGCCTGGGGGTTTCCCCCACTCAACAGCGTGTCTCCGAGCCGCTGATGCTACTGCACCCGCCCGC
CAGCTGTCGCTTTCTGCAGCCCCACGGCCAGCAGGTGCCCTACTACCTGGAGAACGAGCCAGCGGC
TACACGGTGCAGGAGGCCCGCCCGGCATTCTACAGGCCAAATTCAGATAATCGACGCCAGGGTGGC
AGAGAAAGATTGGCCAGTACCAATGACAAGGGAAGTATGGCTATGGAATCTGCCAAGGAGACTCGCTAC
TGTGCAGTGTCAATGACTATGCTTCAGGCTACCATTATGGAGTCTGGTCTGTGAGGGCTGCAAGGCC
TTCTTCAAGAGAAGTATCAAGGACATAACGACTATATGTGTCCAGCCACCAACCAGTGCACCATTGAT
AAAAACAGGAGGAAGAGCTGCCAGGCCTGCCGGCTCCGCAATGTACGAAGTGGGAATGATGAAAGGG
ATACGAAAAGACCGAAGAGGAGGAGAATGTTGAAACACAAGCGCCAGAGAGATGATGGGAGGGCAGG
GGTGAAGTGGGTCTGCTGGAGACATGAGAGCTGCCAACCTTTGGCCAAGCCCGCTCATGATCAAACGC
TCTAAGAAGAACAGCCTGGCCTTGTCCCTGACGGCCGACCAGATGGTCAGTGCCTTGTGGATGCTGAG
CCCCCATACTCTATCCGAGTATGATCCTACCAGACCCTTCACTGAAGCTTCGATGATGGGCTTACTG
ACCAACCTGGCAGACAGGGAGCTGGTTCACATGATCAACTGGCGAAGAGGGTCCAGGCTTTGTGGAT
TTGACCCTCCATGATCAGGTCCACCTTCTAGAATGTGCCTGGCTAGAGATCCTGATGATTGGTCTCGTC
TGGCCTCCATGGAGCACCCAGGGAAGCTACTGTTTGTCTCAACTTGTCTTGGACAGGAACAGGGA
AAATGTGTAGAGGCATGGTGGAGATCTTCGACATGCTGCTGGCTACATCATCTCGGTTCCGCATGATG
AATCTGCAGGAGAGGAGTTTGTGTGCCTCAAATCTATTATTTTGTCTAATTCTGGAGTGTACACATTT
CTGTCCAGCACCTGAAGTCTCTGGAAGAGAAGGACCATATCCACCGAGTCTGGACAAGATCACAGAC
ACTTTGATCCACCTGATGGCCAAGGCAGGCCTGACCCTGCAGCAGCAGCACCAGCGGCTGGCCAGCTC
CTCCTCATCTCTCCACATCAGGCACATGAGTAACAAAGGCATGGAGCATCTGTACAGCATGAAGTGC
AAGAACGTGGTCCCCTCTATGACCTGCTGCTGGAGATGCTGGACGCCACCAGCCTACATGCGCCACT
AGCCGTGGAGGGCATCCGTGGAGGAGACGGACCAAAGCCACTTGGCCACTGCGGGCTCTACTTCATCG
CATTCTTGCAAAAGTATTACATCACGGGGGAGGCAGAGGGTTTCCCTGCCACGGTC
ACGCGTACGCGGCCGCTCGAG - GFP Tag - GTTTAAAC
  
```

Protein Sequence:

>Peptide sequence encoded by RG239024
 Blue=ORF Red=Cloning site Green=Tag(s)

```

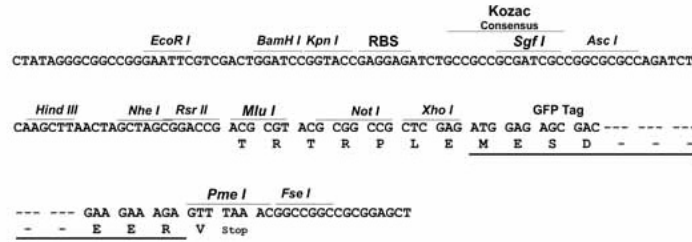
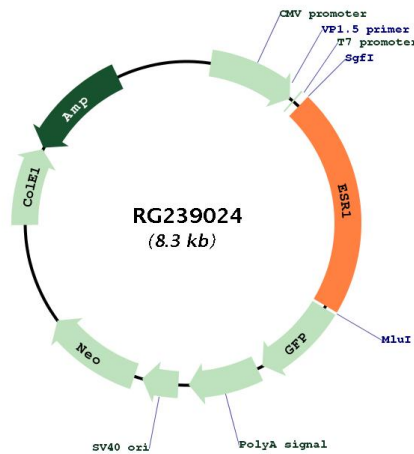
MTMTLHTKASGMALLHQIQGNELEPLNRPQLKIPLERPLGEVYLDSSKPAVYNYPEGAAYEFNAAAAAN
AQVYQGTGLPYGPGSEAAAFGSNGLGGFPPLNSVSPSPLMLLHPPPQLSPFLQPHGQQVPPYLENEPSG
YTVREAGPPAFYRPNSDNRRQGGRERLASTNDKGSMAAMESAKETRYCAVCNDYASGYHYGVWSCEGCKA
FFKRSIQGHNDYMCATNQCTIDKNRRKSCQACRLRKYEVGMMKGIKDRRGRMLKHKRQRDDGEGR
GEVGSAGDMRAANLWPSPLMIKRSKKNLALSLTADQMVSALLDAEPPILYSEYDPRPFSEASMMGLL
TNLADRELVHMINWAKRVPGFVDLTLHDQVHLLCAWLEILMIGLVWRSMHPGKLLFAPNLLDRNQG
KCVVEGMEIFDMLLATSSRFMMNLQGEFVCLKSIIILLNSGVYTFLLSSTLKSLEEKDHIHRVLDKITD
TLIHLMAKAGLTLQQHQRLAQLLLILSHIRHMSNKGMEHLYSMCKNVVPLYDLLLLLEMLDAHRLHAPT
SRGGASVEETDQSHLATAGSTSSHSLQKYYITGEAEGFPATV
TRTRPLEMESDESGLPAMEIECRITGTLNGVEFELVGGGEGTPEQGRMTNKMSTKGALTFSPYLLSHV
MGYGFYHFGTYPSTYENPFLHAINNGGYNTRIEKYEDGGVLHVSFSYRYEAGRVIGDFKVMGTGFPED
SVIFTDKIIIRSNAIVEHLHPMGDNDLDGSFTRTFSLRDGGYSSVVDSHMFKSAIHPSILQNGGPMFA
FRRVEEDHSNTELGIVEYQHAFKTPDADAGEERV
  
```

Restriction Sites:

SgfI-MluI

Cloning Scheme:

Cloning sites used for ORF Shutting:


Plasmid Map:


ACCN: NM_001291241

ORF Size: 1782 bp

| | |
|--------------------------|---|
| OTI Disclaimer: | The molecular sequence of this clone aligns with the gene accession number as a point of reference only. However, individual transcript sequences of the same gene can differ through naturally occurring variations (e.g. polymorphisms), each with its own valid existence. This clone is substantially in agreement with the reference, but a complete review of all prevailing variants is recommended prior to use. More info |
| OTI Annotation: | This clone was engineered to express the complete ORF with an expression tag. Expression varies depending on the nature of the gene. |
| Components: | The ORF clone is ion-exchange column purified and shipped in a 2D barcoded Matrix tube containing 10ug of transfection-ready, dried plasmid DNA (reconstitute with 100 ul of water). |
| RefSeq: | NM_001291241.1 , NP_001278170.1 |
| RefSeq Size: | 6311 bp |
| RefSeq ORF: | 1785 bp |
| Locus ID: | 2099 |
| UniProt ID: | P03372 |
| Cytogenetics: | 6q25.1-q25.2 |
| Protein Families: | Druggable Genome, Nuclear Hormone Receptor, Transcription Factors |
| MW: | 66.6 kDa |
| Gene Summary: | This gene encodes an estrogen receptor and ligand-activated transcription factor. The canonical protein contains an N-terminal ligand-independent transactivation domain, a central DNA binding domain, a hinge domain, and a C-terminal ligand-dependent transactivation domain. The protein localizes to the nucleus where it may form either a homodimer or a heterodimer with estrogen receptor 2. The protein encoded by this gene regulates the transcription of many estrogen-inducible genes that play a role in growth, metabolism, sexual development, gestation, and other reproductive functions and is expressed in many non-reproductive tissues. The receptor encoded by this gene plays a key role in breast cancer, endometrial cancer, and osteoporosis. This gene is reported to have dozens of transcript variants due to the use of alternate promoters and alternative splicing, however, the full-length nature of many of these variants remain uncertain. [provided by RefSeq, Jul 2020] |