

## Product datasheet for **RG239023**

### **GUCY1B1 (NM\_001291953) Human Tagged ORF Clone**

#### **Product data:**

Product Type:	Expression Plasmids
Product Name:	GUCY1B1 (NM_001291953) Human Tagged ORF Clone
Tag:	TurboGFP
Symbol:	GUCY1B1
Synonyms:	GC-S-beta-1; GC-SB3; GUC1B3; GUCB3; GUCSB3; GUCY1B3
Mammalian Cell Selection:	Neomycin
Vector:	pCMV6-AC-GFP (PS100010)
E. coli Selection:	Ampicillin (100 ug/mL)



[View online »](#)

**ORF Nucleotide Sequence:**

>RG239023 representing NM\_001291953.  
 Blue=ORF Red=Cloning site Green=Tag(s)

```
GCTCGTTAGTGAACCGTCAGAATTTTGTAAACGACTCACTATAGGGCGGCCGGGAATTCGTGACTG
GATCCGGTACCGAGGAGATCTGCCGCCGCGATCGCC
ATGTTTGGGAAGATGTTTTTCGCTTTTTGCCAAGAATCTGGTTATGATACAATCTTGCCTGTCTGGGC
TCTAATGTCAGAGAATTTCTACAGAACCCTTGATGCTCTGCACGACCACCTTGCTACCATCTACCCAGGA
ATGCGTGCACCTTCCTTTAGGTGCACTGATGCAGAAAAGGGCAAAGGACTCATTTTGCCTACTACTCA
GAGAGAGAAGGACTTCAGGATATTGTCATTGGAATCATCAAAACAGTGGCACAACAAATCCATGGCACT
GAAATAGACATGAAGTTATTACAGCAAAGAAATGAAGAATGTGATCATACTCAATTTTTAAATGAAGAA
AAAGAGTCAAAGAAGAGGATTTTTATGAAGATCTTGACAGATTTGAAGAAAATGGTACCCAGGAATCA
CGCATCAGCCATATACATTCTGCAAAGCTTTTCTTTTCATATAATATTTGACCGGGACCTAGTGGTC
ACTCAGTGTGGCAATGCTATATACAGAGTTCTCCCCAGCTCCAGCCTGGGAATTGCAGCCTTCTGTCT
GTCTTCTCGCTGGTTCGCTCATATTGATATTAGTTTCCATGGGATCCTTTCTCACATCAATACTGTT
TTTGTATTGAGAAGCAAGGAAGGATTGTTGGATGTGGAGAAATAGAATGTGAGGATGAAGTACTGACTGGG
ACTGAGATCAGCTGCTTACGTCTCAAGGTCAAATGATCTACTTACCTGAAGCAGATAGCATACTTTTT
CTATGTTACCAAGTGTATGAACCTGGACGATTTGACAAGGAGAGGGCTGTATCTAAGTACATCCCT
CTGCATGATGCCACGCGCATCTTGTCTTTTGGGAGAACAATTTAGAGAGGAATACAAACTCACCCAA
GAACTGGAAATCCTCACTGACAGGCTACAGCTCACGTTAAGAGCCCTGGAAGATGAAAAGAAAAGACA
GACACAGGATGCTCTGCTAGAATCCAGGCTTTAAAGTACAAACGACACTGATGCTGTGTGAAAAGGAC
AGCAGAAGCACTAAAGGCTTTCCAGTATTTCTTACAGTGGCTTCTGCTGATCCCACTGAACAGATTG
CTGATTTCTGCTTCTCCGCTGTTGCAATGAGCTGCGGCACAAGCGTCCAGTGCCTGCCAAAAGA
TATGACAATGTACCATCCTCTTAGTGGCAATGTGGGCTTCAATGCTTTCTGTAGCAAGCATGCATCT
GGAGAAGGAGCCATGAAGATCGTCAACCTCCTCAACGACCTCTACACCAGATTTGACACACTGACTGAT
TCCCGGAAAAACCCATTTGTTTATAAGGTGGAGACTGTTGGTGACAAGTATATGACAGTGAAGTGTGTTA
CCAGAGCCATGCATTCACCATGCACGATCCATCTGCCACCTGGCCTTGGACATGATGAAAATGCTGGC
CAGGTTCAAGTAGATGGTGAATCTGTTCCAGATAACAATAGGGATACACACTGGAGAGGTAGTTACAGGT
GTCATAGGACAGCGGATGCCTCGATACTGTCTTTTGGGAATACTGTCAACCTCACAAAGCCGAACAGAA
ACCACAGGAGAAAAGGGAAAAATAAATGTGTCTGAATATACATACAGATGCTTATGTCTCCAGAAAAT
TCAGATCCACAATCCACTTGGAGCACAGAGGCCAGTGTCCATGAAGGGCAAAAAGAACCAATGCAA
GTTTGGTTTCTATCCAGAAAAATACAGGAACAGAGGAAACAAAGCAGGATGATGAC
ACGCGTACGCGGCCGCTCGAG – GFP Tag – GTTTAAAC
```

**Protein Sequence:**

>Peptide sequence encoded by RG239023  
 Blue=ORF Red=Cloning site Green=Tag(s)

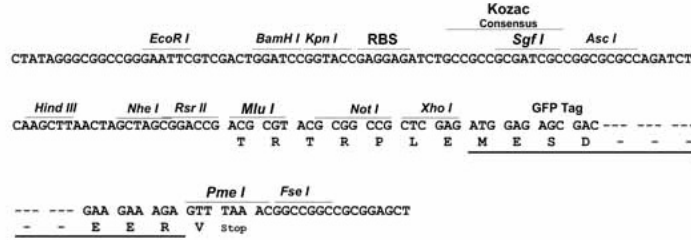
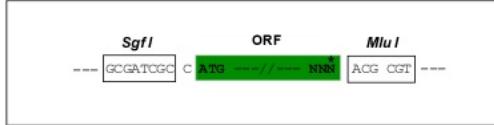
```
MFGKMFVFCQESGYDILRVLGSNVREFLQNLDALHDHLATIYPGMRAPSFRCCTDAEKGKGLILHYYS
EREGLQDIVIGI IKTVAQQIHGTEIDMKVIQQRNEECDHTQFLIEEKESKEEDFYEDLDRFEENGTOES
RISPYTFCKAFPFIHIFDRDLVVTQCGNAIYRVLPLQPGNCSLLSVFSLVRPHIDISFHGILSHINTV
FVLRKEGLLDVEKLECEDELGTETISCLRLKQMIYLPEDSILFLCSPSVMNLDDLTRRGLYLSDIP
LHDATRDLLVLLGEQFREEYKLTQLEILTDRLQLTLRALEDEKKKTDGCPARIQAFKVQTTMLCEKD
SRSTKGFPSISYSGFLLIPLNRLLYSVLPPSVANELRHKRPVPAKRYDNVTILFSGIVGFNAFCSKHAS
GEGAMKIVNLLNDLYTRFDLTDNRKPNFVYKVTVGDKYMTVSGLPEPCIHARSICHLALDMMEIAG
QVQVDGESVQITIGIHTGEVVTGVIQRMPCYCLFGNTVNLTSRTETTGEKGINVSEYTYRCLMSPEN
SDPQFHLEHRGPVSMKGGKPEMQVWFLSRKNTGTEETKQDDD
TRTRPLEMESDESGLPAMEIECRITGTLNGVEFELVGGGEGTPEQGRMTNKMSTKGALTFSPYLLSHV
MGYGFYHFGTYPSGYENPFLHAINNGGYNTRIEKYEDGGVLHVSFSYRYEAGRVIGDFKVMGTGFPED
SVIFTDKIIIRSNAIVEHLHPMGDNDLDGSFTRTFSLRDGGYSSVVDSHMFKSAIHPSILQNGGPMFA
FRRVEEDHSNTELGIVEYQHAFKTPDADAGEERV
```

**Restriction Sites:**

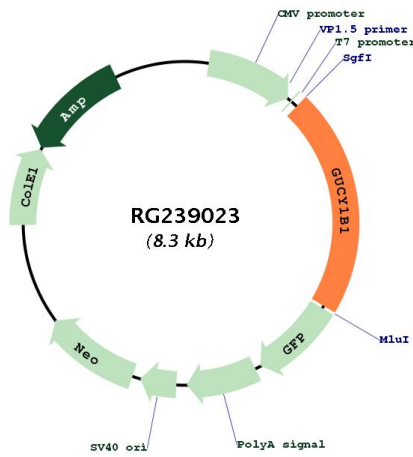
SgfI-MluI

**Cloning Scheme:**

Cloning sites used for ORF Shutting:



**Plasmid Map:**



ACCN: NM\_001291953  
 ORF Size: 1782 bp

<b>OTI Disclaimer:</b>	The molecular sequence of this clone aligns with the gene accession number as a point of reference only. However, individual transcript sequences of the same gene can differ through naturally occurring variations (e.g. polymorphisms), each with its own valid existence. This clone is substantially in agreement with the reference, but a complete review of all prevailing variants is recommended prior to use. <a href="#">More info</a>
<b>OTI Annotation:</b>	This clone was engineered to express the complete ORF with an expression tag. Expression varies depending on the nature of the gene.
<b>Components:</b>	The ORF clone is ion-exchange column purified and shipped in a 2D barcoded Matrix tube containing 10ug of transfection-ready, dried plasmid DNA (reconstitute with 100 ul of water).
<b>RefSeq:</b>	<a href="#">NM_001291953.2</a>
<b>RefSeq Size:</b>	3576 bp
<b>RefSeq ORF:</b>	1785 bp
<b>Locus ID:</b>	2983
<b>UniProt ID:</b>	<a href="#">Q02153</a>
<b>Cytogenetics:</b>	4q32.1
<b>Protein Families:</b>	Druggable Genome
<b>Protein Pathways:</b>	Gap junction, Long-term depression, Purine metabolism, Vascular smooth muscle contraction
<b>MW:</b>	68 kDa
<b>Gene Summary:</b>	This gene encodes the beta subunit of the soluble guanylate cyclase (sGC), which catalyzes the conversion of GTP (guanosine triphosphate) to cGMP (cyclic guanosine monophosphate). The encoded protein contains an HNOX domain, which serves as a receptor for ligands such as nitric oxide, oxygen and nitrovasodilator drugs. Alternative splicing results in multiple transcript variants. [provided by RefSeq, May 2014]