

Product datasheet for **RG239021**

PRMT5 (NM_001282955) Human Tagged ORF Clone

Product data:

Product Type:	Expression Plasmids
Product Name:	PRMT5 (NM_001282955) Human Tagged ORF Clone
Tag:	TurboGFP
Symbol:	PRMT5
Synonyms:	HRMT1L5; HSL7; IBP72; JBP1; SKB1; SKB1Hs
Mammalian Cell Selection:	Neomycin
Vector:	pCMV6-AC-GFP (PS100010)
E. coli Selection:	Ampicillin (100 ug/mL)



[View online »](#)

ORF Nucleotide Sequence:

>RG239021 representing NM_001282955.
 Blue=ORF Red=Cloning site Green=Tag(s)

```
GCTCGTTTAGTGAACCGTCAGAATTTTGTAAACGACTCACTATAGGGCGGCCGGGAATTCGTGCGACTG
GATCCGGTACCGAGGAGATCTGCCGCCCGGATCGCC
ATGGCGCGCATGGCGGTGGGGGTGCTGGTGGGAGCCCGGTGCCAGCGGAGGGACCTGAATTGCGTC
CCCCAAATAGCTGACACACTAGGGGCTGTGGCCAAGCAGGGGTTGATTTCCTCTGCATGCCTGTCTTC
CATCCCGTTTTCAAGAGGGAGTTCAATCAGGAACCTGCTAAGAATCGGCCGGTCCCAGACACGATCA
GACCTACTGCTGTGAGGAAGGGCTTTCTGCTGCCCTTAATCAGGAAGATAACACCAACCTGGCCAGA
GTTTTGACCAACCACATCCACACTGGCCATCACTCTTCCATGTTCTGGATGCGGGTACCCTTGGTGGCA
CCAGAGGACCTGAGAGATGATATAATTGAGAATGCACCAACTACACACACAGAGGAGTACAGTGGGGAG
GAGAAAACGTGGATGTGGTGGCACAACCTCCGGACTTTGTGTACTATAGTAAGAGGATTGCAGTGGCT
CTTGAAATTGGGGCTGACCTCCCATCTAATCATGTCTTGCATGCTGGCTGGGGAGCCCATCAAAGCA
GCCATTCTCCCCTAGCATTCTCTGACCAATAAGAAGGGATTCTGTCTTTCTAAGATGCACCAG
AGGCTCATCTCCGGCTCCTCAAGTTGGAGGTGCAGTTTATCATCACAGGCACCAACCACCTCAGAG
AAGGAGTTCTGCTCTACCTCCAATACCTGGAATACTTAAGCCAGAACCCTCCTCCACCTAATGCCTAT
GAACTCTTTGCCAAGGGCTATGAAGACTATCTGCAGTCCCGCTTCAGCCACTGATGGACAACTGGAA
TCTCAGACATATGAAGTGTGAAAAGGACCCCATCAAATACTCTCAGTACCAGCAGGCCATCTATAAA
TGTCTGTAGACCGAGTACCAGAAGAGGAGAAGGATACCAATGTCCAGGACTGATGGTGTGGGAGCA
GGACGGGGACCCCTGGTGAACGCTTCCCTGCGGGCAGCCAAGCAGGCCGACCGCGGGATAAAGCTGTAT
GCTGTGGAGAAAAACCCAAATGCCGTGGTACGCTAGAGAAGTGGCAGTTTGAAGAATGGGAAGCCAA
GTGACCGTAGTCTCATCAGACATGAGGGAATGGGTGGCTCCAGAGAAAGCAGACATCATTGTGAGTGA
CTTCTGGGCTCATTGCTGACAATGAATTTGCTCGCTGAGTGCCTGGATGGAGCCAGCATTCTAAAA
GATGATGGTGTGAGCATCCCGGGGAGTCACTTCTTTCTGGCTCCCATCTTCTCCTCAAGCTGTAC
AATGAGGTCCGAGCCTGTAGGGAGAAGGACCGTACCCTGAGGCCAGTTTGAAGTGCCTTATGTGGTA
CGGCTGCACAACCTCCACCAGCTCTCTGCACCCAGCCCTGTTTACCTTCAGCCATCCCAACAGAGAT
CCTATGATTGACAACAACCGCTATTGCACCTTGGAAATTTCTGTGGAGGTGAACACAGTACTACATGGC
TTTGCCGGCTACTTTGAGACTGTGCTTATCAGGACATCACTCTGAGTATCCGTCCAGAGACTCACTCT
CCTGGGATGTTCTCATGGTTTCCATCCTCTTCCCTATTAAGCAGCCATAACGGTACGTGAAGGCCAA
ACCATCTGTGTGCGTTTCTGGCGATGCAGCAATCCAAGAAGGTGGTATGAGTGGGCTGTGACAGCA
CCAGTCTGTTCTGCTATTATAACCCACAGGCCGCTCATATAACCATTGGCCTC
ACGCGTACGCGGCCGCTCGAG - GFP Tag - GTTTAAAC
```

Protein Sequence:

>Peptide sequence encoded by RG239021
 Blue=ORF Red=Cloning site Green=Tag(s)

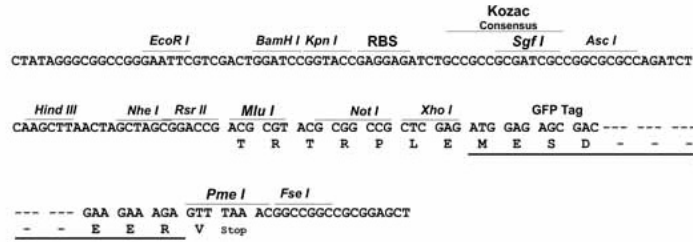
```
MAAMAVGGAGGSRVSSGRDLNCPVEIADTLGAVAKQGFDFLCMPVFHPRFKREFIQEPAKNRPQPQTRS
DLLLSGRAFLPLNQEDNTNLARVLTNHIHTGHHSSMFWMRVPLVAPEDLRDDIIENAPTHTEEYSGE
EKTWMMWHNFRTLCDYSKRIAVALEIGADLPSNHVIDRWLGEPIKAAIILPTSIFLTNKKGFPVLSKMHQ
RLIFRLLKLEVQFIITGTNHSEKEFCSYLQYLEYLSQNRPPPNAYELFAKGYEDYLQSPLQPLMDNLE
SQTVEVFEKDPKYSQYQAIYKCLLDRVPEEEKDTNVQVLMVLGAGRGPLVNASLRAAKQADRRIKLY
AVEKNPNAVVTLENWQFEWGSQVTVVSSDMREWVAPEKADIIVSELLGSAFADNELSPECLDGAQHFLK
DDGVSIPGEYTSFLAPISSKLYNEVRACREKDRDPEAQFEMPVYVRLHNFHQLSAPQPCFTFSHPNRD
PMIDNNRYCTLEFPVEVNTVLHGFAGYFETVLQDITLSIRPETHSPGMFSWFPILFPIKQPIITVREGQ
TICVRFWRCSNSKKVWYEWAVTAPVCSAIHNPTGRSYTIGL
TRTRPLEMESDESGLPAMEIECRITGTLNGVEFELVGGGEGTPEQGRMTNKMSTKGALTFSPYLLSHV
MGYGFYHFGTYPSGYENPFLHAINNGGYNTRIEKYEDGGVLHVSFSYRYEAGRVIGDFKVMGTGFPED
SVIFTDKIIIRSNAIVEHLHPMGDNDLDGSFTRTFSLRDGGYSSVVDSHMFKSAIHPSILQNGGPMFA
FRRVEEDHSNTELGIVEYQHAFKTPDADAGEERV
```

Restriction Sites:

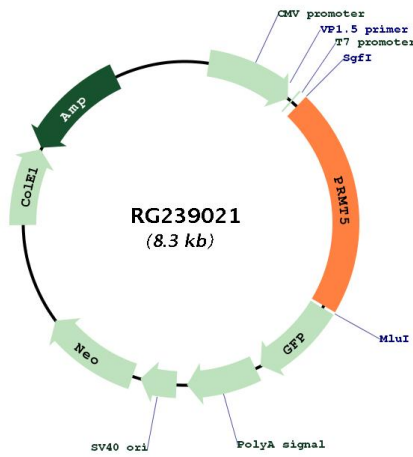
SgfI-MluI

Cloning Scheme:

Cloning sites used for ORF Shutting:



Plasmid Map:



ACCN: NM_001282955

ORF Size: 1779 bp

OTI Disclaimer:	<p>Due to the inherent nature of this plasmid, standard methods to replicate additional amounts of DNA in E. coli are highly likely to result in mutations and/or rearrangements. Therefore, OriGene does not guarantee the capability to replicate this plasmid DNA. Additional amounts of DNA can be purchased from OriGene with batch-specific, full-sequence verification at a reduced cost. Please contact our customer care team at custsupport@origene.com or by calling 301.340.3188 option 3 for pricing and delivery.</p> <p>The molecular sequence of this clone aligns with the gene accession number as a point of reference only. However, individual transcript sequences of the same gene can differ through naturally occurring variations (e.g. polymorphisms), each with its own valid existence. This clone is substantially in agreement with the reference, but a complete review of all prevailing variants is recommended prior to use. More info</p>
OTI Annotation:	This clone was engineered to express the complete ORF with an expression tag. Expression varies depending on the nature of the gene.
Components:	The ORF clone is ion-exchange column purified and shipped in a 2D barcoded Matrix tube containing 10ug of transfection-ready, dried plasmid DNA (reconstitute with 100 ul of water).
RefSeq:	NM_001282955.2
RefSeq Size:	2409 bp
RefSeq ORF:	1782 bp
Locus ID:	10419
UniProt ID:	O14744
Cytogenetics:	14q11.2
Protein Families:	Stem cell - Pluripotency
MW:	67.7 kDa
Gene Summary:	<p>This gene encodes an enzyme that belongs to the methyltransferase family. The encoded protein catalyzes the transfer of methyl groups to the amino acid arginine, in target proteins that include histones, transcriptional elongation factors and the tumor suppressor p53. This gene plays a role in several cellular processes, including transcriptional regulation, and the assembly of small nuclear ribonucleoproteins. A pseudogene of this gene has been defined on chromosome 4. Alternative splicing results in multiple transcript variants encoding different isoforms. [provided by RefSeq, Sep 2015]</p>