

Product datasheet for **RG238993**

EYA1 (NM_001288574) Human Tagged ORF Clone

Product data:

Product Type:	Expression Plasmids
Product Name:	EYA1 (NM_001288574) Human Tagged ORF Clone
Tag:	TurboGFP
Symbol:	EYA1
Synonyms:	BOP; BOR; BOS1; OFC1
Mammalian Cell Selection:	Neomycin
Vector:	pCMV6-AC-GFP (PS100010)
E. coli Selection:	Ampicillin (100 ug/mL)



[View online »](#)

ORF Nucleotide Sequence:

>RG238993 representing NM_001288574.
 Blue=ORF Red=Cloning site Green=Tag(s)

```
GCTCGTTTAGTGAACCGTCAGAATTTTGTAAACGACTCACTATAGGGCGGCCGGGAATTCGTGACTG
GATCCGGTACCGAGGAGATCTGCCGCCCGGATCGCC
ATGGAAATGCAGGATCTAACCAGCCCGCATAGCCGCTCTGAGTGGTAGTAGTGAATCCCCAGTGGCCCC
AACTCGGTAACCTCATATAAATAGTAATTCATGACTCCCAATGGCACCGAAGTTAAACAGAGCCA
ATGAGCAGCAGTAAACAGCTTCAACGACAGCCGACGGGTCTTTAAACAATTTCTCAGGTTCAAGCAATT
GGGAGCAGTAGTTTCAGCCCACGACCAACTCACCAGTTCTCTCCACCACAGATTTACCCTTCCAAACCA
TACCCACATATTCTCCCTACCCCTTCTCACAACATATGGCTGCATATGGGCAAACACAGTTTACCACA
GGAATGCAACAAGCTACAGCCTATGCCACGTACCCACAGCCAGGACAGCCGTACGGCATTTCCTCATAT
GGCATCAAGACTGAAGGTGGATTGTCACAGTCTCAGTACCTGGACAGACAGGATTTCTCAGCTATGGC
ACAAGCTTCAGTACCCCTCAACCTGGACAGGCACCATACAGCTACCAGATGCAAGGTAGCAGTTTTACA
ACATCATCAGGAATATACAGGAAATAATCACTCACAATTCCTCTGGATTTAATAGTTCACAGCAG
GACTATCCGTCTTATCCAGTTTTGGCCAGGGTCACTACGCACAGTATTATAACAGCTCACCGTATCCA
GCACATTATGACCAGCAGCAACACCAGCCCAACGACACCATCCACCAATGCCACTTACCAGCTTCAA
GAACCGCCATCTGGCATACCAGCCAAGCAGTTACAGATCCCACAGCAGAGTACAGCACAATCCACAGC
CCATCAACACCCATTAAGATTAGATTCTGATCGATTGCGTTCGAGGTTTCCAGATGGGAAATCACGTGGA
CGGGGCCGAAGAAACAATAATCCTTACCTCCCCAGATTCTGATCTTGAGAGAGTGTTCATCTGGGAC
TTGGATGAGACAATCATTGTTTTCCACTCCTTGCTTACTGGGCTCAGCCAACAGATATGGGAGGGAT
CCACCCACTTCAGTTTCCCTGGACTGCGAATGGAAGAAATGATTTCACTTGGCAGACACACATTTA
TTTTTAAATGACTTAGAAGAATGTGACCAAGTCCATATAGATGATGTTTCTTCCAGATGATAACGGACAG
GACATAAGCACATATAACTTTGGAACAGATGGCTTTCCTGCTGCAGCAACCAGTACTTATGTTTG
GCAACTGGTGTACGGGGCGGTGTGGACTGGATGAGAAAGTTGGCCTTCCGCTACAGACGGGTAAAAGAG
ATCTACAACACCTACAAAATAATGTTGGAGGTCTGCTTGGTCCAGCTAAGAGGGGAAAGCCTGGCTGAG
TTGAGGGCCGAAATTGAAGCCCTGACCGACTCCTGGTTGACACTGGCCCTGAAAGCACTCTCGTCTATT
CACTCCCGGACAAACTGTGTGAATTTTTAGTAACAACACTACTCAGCTCATCCAGCATTGGCGAAAGTC
CTGCTGTATGGGTTAGGAATTGATTTCCAATAGAAAATATTTACAGTGCAACTAAAATAGGAAAAGAA
AGCTGTTTTGAGAGAATAATTCAAAGTTTGAAGAAAAGTGGTGTATGTTGTTATAGGAGATGGTGTGTA
GAAGAAGAACAAGGAGCAAAAAAGCACGCGATGCCCTTCTGGAGGATCTCCAGCCACTCGGACCTCATG
GCCCTGCACCATGCCTTGAAGTGGAGTACCTG
ACGCGTACGCGGCCGCTCGAG – GFP Tag – GTTTAAAC
```

Protein Sequence:

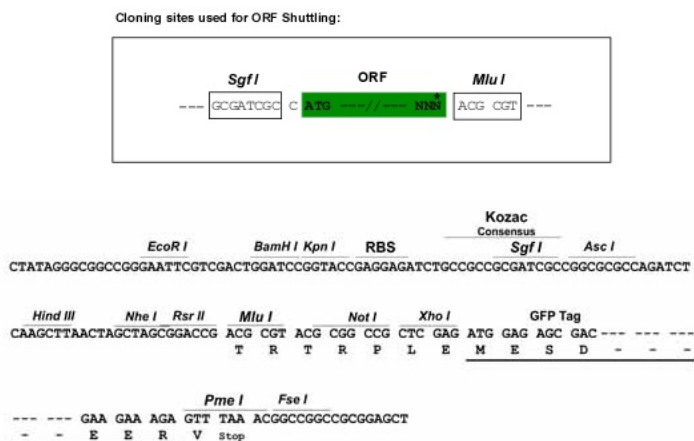
>Peptide sequence encoded by RG238993
 Blue=ORF Red=Cloning site Green=Tag(s)

```
MEMQDLTSPHSRLSGSSESPSGPKLGNSHINSNSMTPNGTEVKTEPMSSSETASTTADGSLNNSGSAI
GSSSFSPRPTHQFSPPQIYPSKYPHILPTSSQTMAAYGQTQFTTGMQATAYATYPQGPQPYGISSY
GIKTEGGLSQSQSPGQTGFLSYGTSFSTPQPGQAPYSYQMQGSSFTTSSGIYTGNNSLTNSSGFNSSQQ
DYPSYPSFGQQYAQYYNSSPYPAHYMTSSNTSPTTSTNATYQLQEPPSGITSQAVTDPTAEYSTIHS
PSTPIKSDSDRLRRGSDGKSRGRGRNNPSPPPSDLERFVWDLDETIIVFHSLLTGSYANRYGRD
PPTSVSLGLRMEEMI FNADTHLFFNDLEEDQVHIDDVSSDDNGQDLSTYNFGTDGFPAAT SANLCL
ATGVRGGVDWMRKLAFRYRRVKEIYNTYKNNVGLLGPAKREAWLQLRAEIEAL TDSWL TLALKALSLI
HSRTNCVNILVTTQLIPALAKVLLYGLGIVFPIENIYSATKIGKESCFERIIQRFGRKVVVVVIGDGV
EEEQGAKKHAMPFWRISSHSDLMALHHALELEYL
TRTRPLEMESDESGLPAMEIECRITGTLNGVEFELVGGGEGTPEQGRMTNKMSTKGALTFSPYLLSHV
MGYGFYHFGTYPSTYENPFLHAINNGGYNTRIEKYEDGGVLHVSFSYRYEAGRVIGDFKVMGTGFPED
SVIFTDKIIIRSNATVEHLHPMGDNDLDGSFTRTFSLRDGGYSSVVDSHMFKSAIHPSILQNGGPMFA
FRRVEEDHSNTELGIVEYQHAFKTPDADAGEERV
```

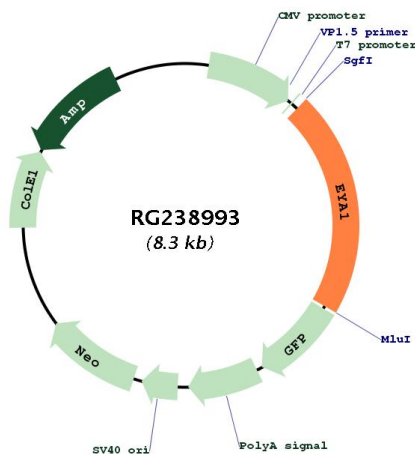
Restriction Sites:

Sgfl-Mlul

Cloning Scheme:



Plasmid Map:



ACCN: NM_001288574

ORF Size: 1758 bp

OTI Disclaimer:	The molecular sequence of this clone aligns with the gene accession number as a point of reference only. However, individual transcript sequences of the same gene can differ through naturally occurring variations (e.g. polymorphisms), each with its own valid existence. This clone is substantially in agreement with the reference, but a complete review of all prevailing variants is recommended prior to use. More info
OTI Annotation:	This clone was engineered to express the complete ORF with an expression tag. Expression varies depending on the nature of the gene.
Components:	The ORF clone is ion-exchange column purified and shipped in a 2D barcoded Matrix tube containing 10ug of transfection-ready, dried plasmid DNA (reconstitute with 100 ul of water).
RefSeq:	NM_001288574.2
RefSeq Size:	4323 bp
RefSeq ORF:	1761 bp
Locus ID:	2138
UniProt ID:	Q99502
Cytogenetics:	8q13.3
Protein Families:	Druggable Genome, Phosphatase, Transcription Factors
MW:	64.4 kDa
Gene Summary:	This gene encodes a member of the eyes absent (EYA) family of proteins. The encoded protein may play a role in the developing kidney, branchial arches, eye, and ear. Mutations of this gene have been associated with branchiootorenal dysplasia syndrome, branchiootic syndrome, and sporadic cases of congenital cataracts and ocular anterior segment anomalies. A similar protein in mice can act as a transcriptional activator. Alternatively spliced transcript variants have been identified for this gene. [provided by RefSeq, Dec 2013]