

Product datasheet for **RG238985**

CTNNA2 (NM_001282599) Human Tagged ORF Clone

Product data:

Product Type:	Expression Plasmids
Product Name:	CTNNA2 (NM_001282599) Human Tagged ORF Clone
Tag:	TurboGFP
Symbol:	CTNNA2
Synonyms:	CAP-R; CAPR; CDCBM9; CT114; CTNR
Mammalian Cell Selection:	Neomycin
Vector:	pCMV6-AC-GFP (PS100010)
E. coli Selection:	Ampicillin (100 ug/mL)



[View online »](#)

ORF Nucleotide Sequence:

>RG238985 representing NM_001282599.
 Blue=ORF Red=Cloning site Green=Tag(s)

```
GCTCGTTAGTGAACCGTCAGAATTTTGTAAACGACTCACTATAGGGCGGCCGGGAATTCGTGACTG
GATCCGGTACCGAGGAGATCTGCCGCCCGCATCGCC
ATGGATGGATGGAGAAGGCCACTCCAGTCAGTAGGCAAAGTCTGTGAAAAAATATGAAGACTTCTGAG
ATGCATACCATGTCTGGAGCACAGACTGGAAGGAAAAAGGAGATCCTCTCAACATTGCGATTGAT
AAGATGACTAAGAAAACAAGAGATCTAAGGAGACAGCTTCGAAAAGCAGTGATGGATCACATATCTGAC
TCTTCTCGTGAACCAATGTTCTTTGCTAGTTCTCATTGAGGCTGCAAAGAGCGGAAATGAAAAGGAA
GTGAAAGAATATGCCAAGTTTTCCGTGAGCATGCCAACAACTGGTAGAGGTTGCCAATTTGGCCTGT
TCCATCTCCAACAATGAAGAAGGGTGAATAGTTCCGATGGCAGCCACCCAGATTGACAGCCTGTGT
CCCCAGGTCATCAATGCCGCTCTGACACTGGCTGCCCGGCCACAGAGCAAAGTTGCTCAGGATAACATG
GACGCTTCAAAGACCAGTGGGAGAAGCAGGTCGAGTGTGACAGAGGCCGTGGATGACATCACCTCA
GTGGATGACTTCTCTGTCTCAGAAAATCACATCTTGGAGGATGTGAACAAGTGTGTGATAGCCCTC
CAAGAGGGCGATGTGGACTCTGGACCGACTGCAGGGGCCATCAGGGGCCGGCAGCTCGAGTCATA
CACATCATCAATGCTGAGATGGAGAATATGAAGCTGGGTTTATACTGAGAAGGTGTTGGAAGCTACA
AAATTGCTTTCTGAAACAGTGATGCCACGCTTCGCTGAACAAGTAGAGGTTGCCATTGAAGCCCTGAGT
GCCAACGTTCTCAACCGTTTGGAGGAGAATGAGTTCATCGATGCCTCTCGCCTGGTGTATGATGGCGTT
CGGGACATCAGAAAGGCTGTGCTGATGATCAGGACCCAGAAAGTAGAGGATGATTCTGACTTTGAG
CAGGAAGATTATGATGTGCGTAGCAGGACAAGTGTTCAGACTGAGGATGACCAGCTCATTGCAGGGCAG
AGCGCACGGGCCATCATGGCGCAACTACCGCAGGAGGAGAAGGCAAAAAAGCTGAGCAGGTGGAGATA
TTCCATCAAGAGAAAAGCAAGCTGGATGCAGAAGTGGCCAAATGGGACGACAGCGGCAATGATATCATT
GTACTGGCCAAGCAGATGTGTATGATCATGATGAAAATGACAGACTTCACAAGAGGCAAAAGCCATTG
AAAAATACATCTGATGTCAATTAATGCTGCCAAGAAAATTGCCGAAGCAGGTTCTCGAATGGACAAATTA
GCTCGTGTGTGGCTGATCAGTGTCTGATTGAGCATGTAAAGCAGGATTTATTAGCCTACCTTCAACGA
ATTGCCTTGATTTGCCATCAGCTTAATATCTGCAGCAAGGTGAAGGCAGAAGTGCAGAATCTGGGAGGA
GAGCTCATTGTGTGAGGCTGGACAGTCCACATCGCTTATCCAGGCAGCTAAAAACCTGATGAATGCT
GTTGTCTCACGGTGAAGCATCCTATGTGCCTCAACCAATACCAGAAGGTCTATGGGACAGCAGCT
GTCAACTCACCTGTTGTCTTGAAGATGAAGGCTCCAGAGAAGAAGCCCTTGTGAAGAGAGAAAAG
CCTGAAGATTCCAGACACGAGTTCGACGAGTTCAGAGGTTCTCAGAAGAAACACATTTCCGCTGTACAGGCTTAA
AGTGAATTCAAAGCAATGGATTCCTTC
ACGCGTACGCGGCCGCTCGAG – GFP Tag – GTTTAAAC
```

Protein Sequence:

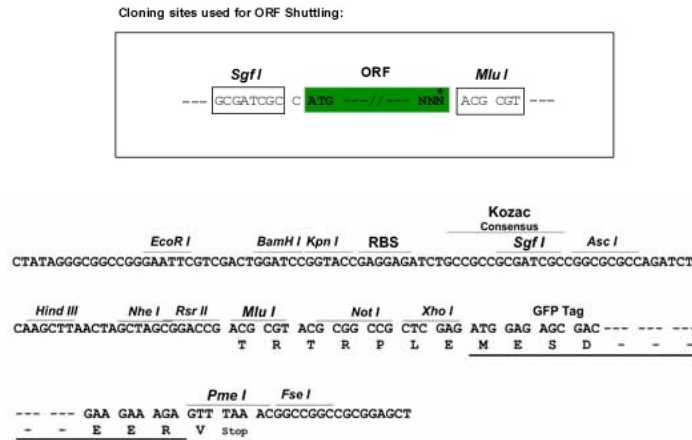
>Peptide sequence encoded by RG238985
 Blue=ORF Red=Cloning site Green=Tag(s)

```
MDGWRRPLQSVGKVEKMNKTSMTMSGAQTGRKEKGDPLNIAIDKMTKKTRDLRRQLRKAVMDHISD
SFLETNPVLLVLEAAKSGNEKEVKEYAQVFRHANKLVEVANLACSISNNEGVKLVMAATQIDSLC
PQVINAALTLAARPQSKVAQDNMDVFKDQWEKQVRVLEAVDDITSVDDFLSVSENHILEDVKNKCVIAL
QEGDVTLDRTAGAIRGRAARVIHIINAEMENYEAGVYTEKVLEATKLLSETVMPRFAEQVEVAIEALS
ANVPQPFEEDEFIDASRLVYDGVDIRKAVLMIRTPPELEDDSDFEQEDYDVRSRVSVQTEDDQLIAGQ
SARAIMAQLPQEEKAKIAEQVEIFHQEKSKLDAEVAKWDDSGNDIIVLAKQCMIMMEMTDFTRGKGPL
KNTSDVINAAKKIAEAGSRMDKLARAVADQCPDSACKQDLLAYLQRIALYCHQLNICSKVKAQVQNLGG
ELIVSGLDSATSLIQAANKLMNAVVLTKASYVASTKYQKVVYGTAAVNSPVVSWKMKAPEKKPLVKREK
PEEFQTRVRRGSQKKHISPVQALSEFKAMDSF
TRTRPLEMESDESGLPAMEIECRITGTLNGVEFELVGGGEGTPEQGRMTNKMSTKGALTFSPYLLSHV
MGYGFYHFGTYPSTYENPFLHAINNGGYNTRIEKYEDGGVLHVSFSYRYEAGRVIGDFKVMGTGFPEF
SVIFTDKIIIRSNAVEHLHPMGDNDLDGSFTRTFSLRDGGYSSVVDSHMFKSAIHPSILQNGGPMFA
FRRVEEDHSNTELGIVEYQHAFKTPDADAGEERV
```

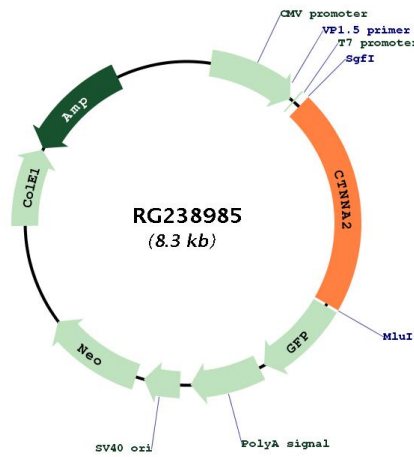
Restriction Sites:

Sgfl-MluI

Cloning Scheme:



Plasmid Map:



ACCN: NM_001282599

ORF Size: 1752 bp

OTI Disclaimer:	The molecular sequence of this clone aligns with the gene accession number as a point of reference only. However, individual transcript sequences of the same gene can differ through naturally occurring variations (e.g. polymorphisms), each with its own valid existence. This clone is substantially in agreement with the reference, but a complete review of all prevailing variants is recommended prior to use. More info
OTI Annotation:	This clone was engineered to express the complete ORF with an expression tag. Expression varies depending on the nature of the gene.
Components:	The ORF clone is ion-exchange column purified and shipped in a 2D barcoded Matrix tube containing 10ug of transfection-ready, dried plasmid DNA (reconstitute with 100 ul of water).
RefSeq:	NM_001282599.1 , NP_001269528.1
RefSeq Size:	2946 bp
RefSeq ORF:	1755 bp
Locus ID:	1496
UniProt ID:	P26232
Cytogenetics:	2p12
Protein Families:	Druggable Genome
Protein Pathways:	Adherens junction, Arrhythmogenic right ventricular cardiomyopathy (ARVC), Endometrial cancer, Leukocyte transendothelial migration, Pathways in cancer, Tight junction
MW:	65.6 kDa
Gene Summary:	May function as a linker between cadherin adhesion receptors and the cytoskeleton to regulate cell-cell adhesion and differentiation in the nervous system (By similarity). Required for proper regulation of cortical neuronal migration and neurite growth (PubMed:30013181). It acts as negative regulator of Arp2/3 complex activity and Arp2/3-mediated actin polymerization (PubMed:30013181). It thereby suppresses excessive actin branching which would impair neurite growth and stability (PubMed:30013181). Regulates morphological plasticity of synapses and cerebellar and hippocampal lamination during development. Functions in the control of startle modulation (By similarity).[UniProtKB/Swiss-Prot Function]