

Product datasheet for **RG238983**

MMP2 (NM_001302509) Human Tagged ORF Clone

Product data:

Product Type:	Expression Plasmids
Product Name:	MMP2 (NM_001302509) Human Tagged ORF Clone
Tag:	TurboGFP
Symbol:	MMP2
Synonyms:	CLG4; CLG4A; MMP-2; MMP-II; MONA; TBE-1
Mammalian Cell Selection:	Neomycin
Vector:	pCMV6-AC-GFP (PS100010)
E. coli Selection:	Ampicillin (100 ug/mL)



[View online »](#)

ORF Nucleotide Sequence:

>RG238983 representing NM_001302509.
 Blue=ORF Red=Cloning site Green=Tag(s)

```
GCTCGTTTAGTGAACCGTCAGAATTTTGTAAACGACTCACTATAGGGCGGCCGGGAATTCGTGACTG
GATCCGGTACCGAGGAGATCTGCCGCCCGGATCGCC
ATGCAGAAGTTCTTTGGACTGCCCCAGACAGGTGATCTTGACCAGAATACCATCGAGACCATGCGGAAG
CCACGCTGCGGCAACCCAGATGTGGCCAACTACAACCTTCTCCCTCGCAAGCCCAAGTGGGACAAGAAC
CAGATCACATACAGGATCATTGGCTACACACCTGATCTGGACCCAGAGACAGTGGATGATGCCTTTGCT
CGTGCCTTCCAAGTCTGGAGCGATGTGACCCCACTGCGGTTTTCTCGAATCCATGATGGAGAGGCAGAC
ATCATGATCAACTTTGGCCGCTGGGAGCATGGCGATGGATACCCCTTTGACGGTAAGGACGGACTCCTG
GCTCATGCCTTCGCCCCAGGCACTGGTGTGGGGGAGACTCCCATTTTGTGACGATGAGCTATGGACC
TTGGGAGAAGGCCAAGTGGTCCGTGTGAAGTATGGGAACGCCGATGGGGAGTACTGCAAGTCCCCTTC
TTGTTCAATGGCAAGGAGTACAACAGCTGCACTGATACCGGCCGACGCGATGGCTTCTCTGGTGTCC
ACCACCTACAACCTTTGAGAAGGATGGCAAGTACGGCTTCTGTCCCATGAAGCCCTGTTCCCATGGGC
GGCAACGCTGAAGGACAGCCCTGCAAGTTCCATTCCGCTTCCAGGGCACATCCTATGACAGCTGCACC
ACTGAGGGCCGACGGATGGCTACCGCTGGTGGCGCACCACTGAGGACTACGACCCGACAGAAGTAT
GGCTTCTGCCCTGAGACCGCCATGTCCACTGTTGGTGGGAACAGAAAGTGGCCCTGTGTCTTCCCC
TTCACTTTCTGGGCAACAAATATGAGAGCTGCACCAGCGCCGGCCGAGTGACGGAAAGATGTGGTGT
GCGACCACAGCCAACTACGATGATGACCGAAGTGGGGCTTCTGCCCTGACCAAGGGTACAGCCTGTTT
CTCGTGGCAGCCACGAGTTTGGCCACGCCATGGGGCTGGAGCACTCCCAAGACCTGGGGCCCTGATG
GCACCCATTTACCTACACCAAGAAGTCCGCTGTCCCAGGATGACATCAAGGGCATTGAGGAGCTC
TATGGGGCCTCTCTGACATTGACCTTGGCACCGGCCACCCACCCAGCTGGGCCCTGTCACTCCTGAG
ATCTGCAACAGGACATTTGATTTGATGGCATCGCTCAGATCCGTGGTGGATCTTCTTCAAGGAC
CGGTTTCAATTTGGCGGACTGTGACGCCACGTGACAAGCCATGGGGCCCTGCTGGTGGCCACATTCTGG
CCTGAGCTCCCGAAAAGATTGATGCGGTATACGAGGCCCCACAGGAGGAGAAGGCTGTGTTCTTTGCA
GGGAATGAATACTGGATCTACTCAGCCAGCACCCCTGGAGCGAGGGTACCCCAAGCCACTGACCAGCCTG
GGACTGCCCCCTGATGTCCAGCGAGTGGATGCCGCCTTTAACTGGAGCAAAAACAAGAAGACATACATC
TTTGTGGAGACAAATTCTGGAGATAAATGAGGTGAAGAAGAAAATGGATCCTGGCTTCCCAAGCTC
ATCGCAGATGCCTGGAATGCCATCCCCGATAACCTGGATGCCGCTGTGGACCTGCAGGGCGGCGGTAC
AGCTACTTCTTCAAGGGTGCCTATTACCTGAAGCTGGAGAACCAAGTCTGAAGAGCGTGAAGTTTGG
AGCATCAATCCGACTGGCTAGGCTGC
ACGCGTACGCGGCCGCTCGAG – GFP Tag – GTTTAAAC
```

Protein Sequence:

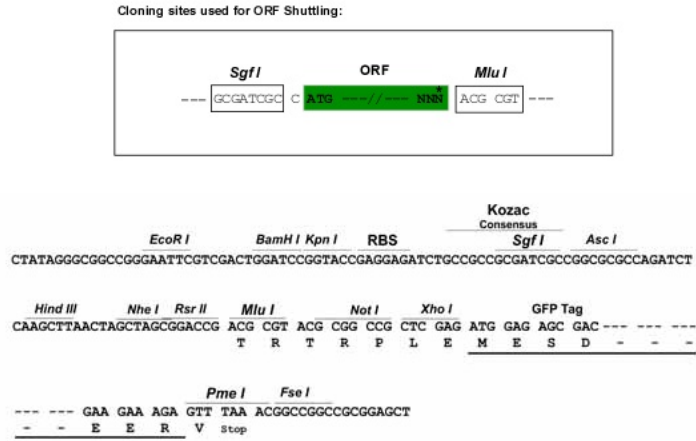
>Peptide sequence encoded by RG238983
 Blue=ORF Red=Cloning site Green=Tag(s)

```
MQKFFGLPQTGDLQNTIETMRKPRCGNPDVANYNFFPRPKPKWKNQITYRIIGYTPDLDPETVDDAFA
RAFQVWSDVTPPLRFRIHDGEADIMINFRWEHGDGYPFDGKDGLLAHAFAPGTGVGGDSHFDDDELWT
LGEGQVVRVKYGNADGEYCKFPFLFNGKEYNSCTDTGRSDGFLWCSTTYNFEKDKYGFPCHEALFTMG
GNAEGQPCKPFRFQGTSYDSCTTEGRTDGYRWCCTEDYDRDKKYGFPCPETAMSTVGGNSEGAPCVFP
FTFLGNKYESCTSAGRSDGKMWCAATANYDDDRKWGFCPDQGYSLFLVAAHEFGHAMGLEHSQDPGALM
APIYTYTKNFRLSQDDIKGIQELYGASPDIDLGTGPTPTLGPVTPEICKQDIVFDGIAQIRGEIFFFKD
RFIWRVTVRDKPMGPLLVATFWPELPEKIDAVYEAPQEEKAVFFAGNEYWIYSASTLERGYPKPLTSL
GLPPDVQRVDAAFNWSKNKTYIFAGDKFWRYNEVKKKMDPGFKLIADAWNAIPDNLDAVVDLQGGGH
SYFFKGAYYLKLENQSLKSVKFGSIKSDWLGC
TRTRPLEMESDESGLPAMEIECRITGTLNGVEFELVGGGEGTPEQGRMTNKMSTKGALTFSPYLLSHV
MGYGFYHFGTYPSTYENPFLHAINNGGYNTRIEKYEDGGVLHVSFSYRYEAGRVIGDFKVMGTGFPED
SVIFTDKIIIRSNATVEHLHPMGDNDLDGSFTRTFSLRDGGYSSVVDSHMFKSAIHPSILQNGGPMFA
FRRVEEDHSNTELGIVEYQHAFKTPDADAGEERV
```

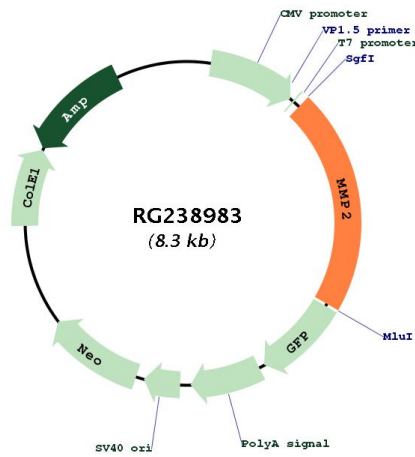
Restriction Sites:

Sgfl-Mlul

Cloning Scheme:



Plasmid Map:



ACCN: NM_001302509

ORF Size: 1752 bp

OTI Disclaimer:	The molecular sequence of this clone aligns with the gene accession number as a point of reference only. However, individual transcript sequences of the same gene can differ through naturally occurring variations (e.g. polymorphisms), each with its own valid existence. This clone is substantially in agreement with the reference, but a complete review of all prevailing variants is recommended prior to use. More info
OTI Annotation:	This clone was engineered to express the complete ORF with an expression tag. Expression varies depending on the nature of the gene.
Components:	The ORF clone is ion-exchange column purified and shipped in a 2D barcoded Matrix tube containing 10ug of transfection-ready, dried plasmid DNA (reconstitute with 100 ul of water).
RefSeq:	NM_001302509.1 , NP_001289438.1
RefSeq Size:	3159 bp
RefSeq ORF:	1755 bp
Locus ID:	4313
UniProt ID:	P08253
Cytogenetics:	16q12.2
Protein Families:	Druggable Genome, Protease
Protein Pathways:	Bladder cancer, GnRH signaling pathway, Leukocyte transendothelial migration, Pathways in cancer
MW:	66.2 kDa
Gene Summary:	This gene is a member of the matrix metalloproteinase (MMP) gene family, that are zinc-dependent enzymes capable of cleaving components of the extracellular matrix and molecules involved in signal transduction. The protein encoded by this gene is a gelatinase A, type IV collagenase, that contains three fibronectin type II repeats in its catalytic site that allow binding of denatured type IV and V collagen and elastin. Unlike most MMP family members, activation of this protein can occur on the cell membrane. This enzyme can be activated extracellularly by proteases, or, intracellularly by its S-glutathiolation with no requirement for proteolytical removal of the pro-domain. This protein is thought to be involved in multiple pathways including roles in the nervous system, endometrial menstrual breakdown, regulation of vascularization, and metastasis. Mutations in this gene have been associated with Winchester syndrome and Nodulosis-Arthropathy-Osteolysis (NAO) syndrome. Alternative splicing results in multiple transcript variants encoding different isoforms. [provided by RefSeq, Oct 2014]