

## Product datasheet for **RG238957**

### **MPP2 (NM\_001278372) Human Tagged ORF Clone**

#### **Product data:**

Product Type:	Expression Plasmids
Product Name:	MPP2 (NM_001278372) Human Tagged ORF Clone
Tag:	TurboGFP
Symbol:	MPP2
Synonyms:	DLG2
Mammalian Cell Selection:	Neomycin
Vector:	pCMV6-AC-GFP (PS100010)
E. coli Selection:	Ampicillin (100 ug/mL)



[View online »](#)

**ORF Nucleotide Sequence:**

>RG238957 representing NM\_001278372.  
 Blue=ORF Red=Cloning site Green=Tag(s)

```

GCTCGTTAGTGAACCGTCAGAATTTTGTAAACGACTCACTATAGGGCGGCCGGGAATTCGTGACTG
GATCCGGTACCGAGGAGATCTGCCGCCCGCATCGCC
ATGCCGGTTCGCCCCACCAACTTGAAACTGCCATGCAGCAAGTCTGGACAACCTGGGATCCCTCCCC
AGTCCACCGGGGCTGCAGAGCTGGACCTGATCTCCTTCGAGGCATTATGGAAAGTCCCATAGTAAGA
TCCTGGCCAAGGTGATAATGGTATTGGTTTATGCAGCAGAATGTCTTTGTTCTATGAAATACATG
CTGAAATACTTTGGGGCCATGAGAGGCTGGAGGAGACGAAGCTGGAGGCCGTGAGAGACAACAACCTG
GAGCTGGTGCAGGAGATCCTGCGGGACCTGGCGCAGCTGGCTGAGCAGAGCAGCACAGCCGCCGAGCTG
GCCACATCCTCCAGGAGCCCCACTTCCAGTCCCTCCTGGAGACGCAGACTCTGTGGCCTCAAAGACC
TATGAGACACCACCCCCAGCCCTGGCCTGGACCTACATTAGCAACCAGCCTGTACCTCCCGATGCT
GTGCGCATGGTGGGCATCCGCAAGACAGCCGGAGAACATCTGGGTGTACGTTCCGCGTGGAGGGCGGC
GAGCTGGTGCAGCGCATTCTGCATGGGGCATGGTGGCTCAACAAGGCCCTGTCATGTGGGTGAC
ATCATCAAGGAGGTGAACGGGCAGCCAGTGGGCAGTGACCCCGCGCACTGCAGGAGCTCCTGCGCAAT
GCCAGTGGCAGTGCATCCTCAAGATCCTGCCAGCTACCAGGAGCCCACTGCCCCGCCAGGTATTT
GTGAAATGTCACTTTGACTATGACCCGGCCCGAGACAGCCTCATCCCCTGCAAGGAAGCAGGCCTGCGC
TTCAACGCCGGGGACTTGCTCCAGATCGTAAACCAGGATGATGCCAACTGGTGGCAGGCATGCCATGTC
GAAGGGGGCAGTCTGGGCTCATTCCCAGCCAGCTGCTGGAGGAGAAGCGGAAAGCATTTGTCAAGAGG
GACCTGGAGCTGACACCAAACCTCAGGGACCCTATGCGGCAGCCTTTCAGGAAAGAAAAAGAGCGAATG
ATGATTTGACCACCAAGAATGCAGAGTTTGACCGTATGAGCTGCTCATTTATGAGGAGGTGGCCCCG
ATGCCCCCGTTCCGCCGAAAACCTGGTACTGATTGGGGCTCAGGGCGTGGGACGGCGCAGCCTGAAG
AACAAAGTCAATGTGGGATCCAGATCGCTATGGCACCACGGTCCCTACACCTCCCGCGGCCGAA
GACTCAGAGCGGGAAGGTCAAGGTTACAGCTTTGTGTCCCGTGGGAGATGGAGGCTGACGTCCGTGCT
GGGCGCTACCTGGAGCATGGCGAATACGAGGGCAACCTGTATGGCACACGTATTGACTCCATCCGGGGC
GTGGTCTGCTGGGAAGGTGTGCGTGTGGATGTCAACCCCGAGGCGTGAAGGTGCTACGAACGGCC
GAGTTTGTCCCTTACGTGGTGTTCATCGAGGCCCCAGACTTCGAGACCCTGCGGGCCATGAACAGGGCT
GCGCTGGAGAGTGAATATCCACCAAGCAGCTCACGGAGGCGGACCTGAGACGGACAGTGGAGGAGAGC
AGCCGCATCCAGCGGGCTACGGGCACTACTTTGACCTCTGCCTGGTCAATAGCAACCTGGAGAGGACC
TTCCGCGAGCTCCAGACGCCATGGAGAAGCTACGGACAGAGCCCACTGGGTGCCTGTCAGCTGGGTG
TAC
ACGCGTACGCGGCCGCTCGAG - GFP Tag - GTTTAAAC
  
```

**Protein Sequence:**

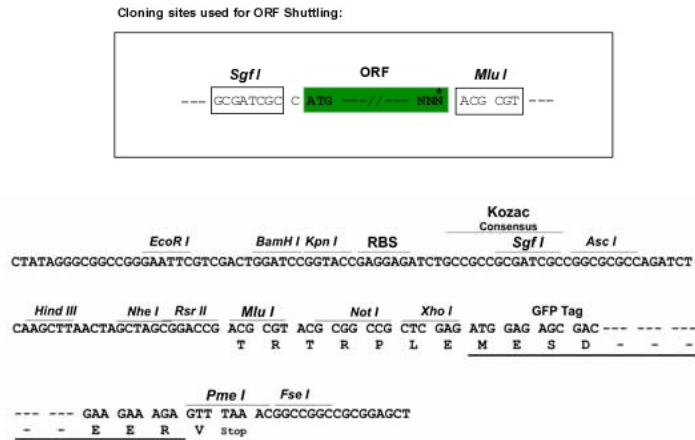
>Peptide sequence encoded by RG238957  
 Blue=ORF Red=Cloning site Green=Tag(s)

```

MPVAATNSETAMQQVLDNLGSLPSATGAAELDLIFLRGIMESPIVRSLAKVIMVLWFMQQNVFVPMKYM
LKYFGAHERLEETKLEAVRDNNLELVQEILRDLAQLAEQSSTAELAHLIQEPHFQSLLETHDSVSKT
YETPPPSPLDPTFSNQPVPPDAVRMVGIRKTAGEHLGVTFRVEGGELVIARILHGMVAQQGLLHVGD
IIEKVNQPVGSDPRALQELLRNASGSVILKILPSYQEPHLPRQVFKCHFVDYDPARDSLIPCKEAGLR
FNAGDLLQIVNQDDANWWQACHVEGGSAGLIPSQLEEKRAFKVRDLELTPNSGTLCGSLSGKKKRM
MYLTTKNAEFDRHELLIYEEVARMPPFRKTLVLIGAQGVGRRSLKNKLIMWDPDRYGTTPYTSRRPK
DSEREGQGYSFVSRGEMEADVRAGRYLEHGEYEGNLYGTRIDSIIRGVVAAAGKVCVLDVNPQAVKVLRTA
EFVPYVVFIEAPDFETLRAMNRAALESISTKQLTEADLRRTVEESSRIQRGYGHYFDLCLVNSLERT
FRELQTAMEKLRTPEQWVPVSWVY
TRTRPLEMESDESGLPAMEIECRITGTLNGVEFELVGGGEGTPEQGRMTNKMSTKGALTFSPYLLSHV
MGYGFYHFGTYPSTYENPFLHAINNGGYNTRIEKYEDGGVLHVSFSYRYEAGRVIGDFKVMGTGFPED
SVIFTDKIIIRSNAIVEHLHPMGDNDLDGSFTRTFSLRDGGYSSVVDSHMFKSAIHPSILQNGGPMFA
FRRVEEDHSNTELGIVEYQHAFKTPDADAGEERV
  
```

**Restriction Sites:**

SgfI-MluI

**Cloning Scheme:**


**ACCN:** NM\_001278372

**ORF Size:** 1728 bp

**OTI Disclaimer:** The molecular sequence of this clone aligns with the gene accession number as a point of reference only. However, individual transcript sequences of the same gene can differ through naturally occurring variations (e.g. polymorphisms), each with its own valid existence. This clone is substantially in agreement with the reference, but a complete review of all prevailing variants is recommended prior to use. [More info](#)

**OTI Annotation:** This clone was engineered to express the complete ORF with an expression tag. Expression varies depending on the nature of the gene.

**Components:** The ORF clone is ion-exchange column purified and shipped in a 2D barcoded Matrix tube containing 10ug of transfection-ready, dried plasmid DNA (reconstitute with 100 ul of water).

**RefSeq:** [NM\\_001278372.2](#)

**RefSeq Size:** 4717 bp

**RefSeq ORF:** 1731 bp

**Locus ID:** 4355

**UniProt ID:** [Q14168](#)

**Cytogenetics:** 17q21.31

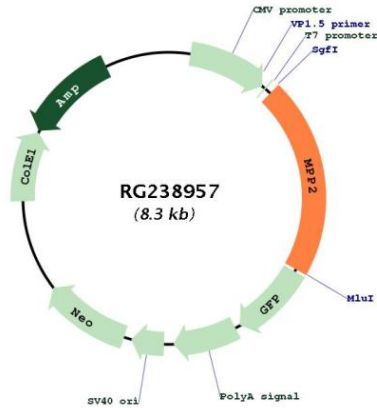
**Protein Families:** Druggable Genome

**MW:** 65 kDa

**Gene Summary:**

Palmitoylated membrane protein 2 is a member of a family of membrane-associated proteins termed MAGUKs (membrane-associated guanylate kinase homologs). MAGUKs interact with the cytoskeleton and regulate cell proliferation, signaling pathways, and intracellular junctions. Palmitoylated membrane protein 2 contains a conserved sequence, called the SH3 (src homology 3) motif, found in several other proteins that associate with the cytoskeleton and are suspected to play important roles in signal transduction. [provided by RefSeq, Jul 2008]

**Product images:**



Circular map for RG238957