

## Product datasheet for **RG238928**

### **Ku70 (XRCC6) (NM\_001288977) Human Tagged ORF Clone**

#### **Product data:**

Product Type:	Expression Plasmids
Product Name:	Ku70 (XRCC6) (NM_001288977) Human Tagged ORF Clone
Tag:	TurboGFP
Symbol:	XRCC6
Synonyms:	CTC75; CTCBF; G22P1; KU70; ML8; TLA
Mammalian Cell Selection:	Neomycin
Vector:	pCMV6-AC-GFP (PS100010)
E. coli Selection:	Ampicillin (100 ug/mL)



[View online »](#)

**ORF Nucleotide Sequence:**

>RG238928 representing NM\_001288977.  
 Blue=ORF Red=Cloning site Green=Tag(s)

```
GCTCGTTTAGTGAACCGTCAGAATTTTGTAAACGACTCACTATAGGGCGGCCGGGAATTCGTGACTG
GATCCGGTACCGAGGAGATCTGCCGCCCGGATCGCC
ATGTCAGGGTGGGAGTCATATTACAAAACCGAGGGCGATGAAGAAGCAGAGGAAGAACAAGAAGAGAAC
CTTGAAGCAAGTGGAGACTATAAATATTCAGGAAGAGATAGTTTGATTTTTTTGGTTGATGCCTCCAAG
GCTATGTTTGAATCTCAGAGTGAAGATGAGTTGACACCTTTTGACATGAGCATCCAGGAGCTGGATAAT
CCAGGTGCAAAAACGAATTCTAGAGCTTGACCAGTTTAAGGGGCAGCAGGGACAAAACGTTTCCAAGAC
ATGATGGGCCACGGATCTGACTACTCACTCAGTGAAGTGTGTGGGTCTGTGCCAACCTCTTTAGTGAT
GTCCAATCAAGATGAGTCATAAGAGGATCATGCTGTTACCAATGAAGACAACCCCATGGCAATGAC
AGTGCCAAAGCCAGCCGGGCCAGGACCAAAGCCGGTGTCTCCGAGATACAGGCATCTTCCCTGACTTG
ATGCACCTGAAGAAACCTGGGGCTTTGACATATCCTTGTCTACAGAGATATCATCAGCATAGCAGAG
GATGAGGACCTCAGGGTCACTTTGAGGAATCCAGCAAGCTAGAAGACCTGTTGCCGAAGGTTCCGCC
AAGGAGACCAGGAAGCGAGCACTCAGCAGTTAAAGCTGAAGCTCAACAAAGATATAGTGATCTCTGTG
GGCATTATAATCTGGTCCAGAAGGCTCTCAAGCCTCCTCAATAAAGCTCTATCGGGAACAAATGAA
CCAGTGA AAAACGAACCCGGACCTTAATACAAGTACAGGCGGTTTGTCTTGCCTAGCGATACCAAG
AGGTCTCAGATCTATGGGAGTCGTGAGATTATACTGGAGAAAAGAGAAAACAGAAGAGCTAAAACGGTTT
GATGATCCAGGTTTATGCTCATGGGTTTCAAGCCGTTGGTACTGCTGAAGAAAACACCATACCTGAGG
CCCTCCCTGTTTCGTGTACCCAGAGGAGTCGCTGGTATTGGGAGCTCAACCCTGTTCAAGTCTGCTC
ATCAAGTGTCTGGAGAAGGAGTTGCAGCATTGTGCAGATACACACCCCGCAGGAACATCCCTCCTTAT
TTTGTGGCTTTGGTGCCACAGGAAGAAGAGTTGGATGACCAGAAAATTCAGGTGACTCCTCCAGGCTTC
CAGCTGGTCTTTTACCCTTTGCTGATGATAAAAAGGAAGATGCCCTTTACTGAAAAAATCATGGCAACT
CCAGAGCAGGTGGCAAGATGAAGGCTATCGTTGAGAAGCTTCGCTTACACATACAGAAGTGACAGCTTT
GAGAACCCCGTGTGCAGCAGCACTTCAGGAACCTGGAGGCTTGGCCTTGGATTGATGGAGCCGGAA
CAAGCAGTGGACCTGACATTGCCAAGGTTGAAGCAATGAATAAAAGACTGGGCTCCTTGGTGGATGAG
TTTAAGGAGCTTGTTTACCCACCAGATTACAATCCTGAAGGAAAAGTTACCAAGAGAAAACAGATAAT
GAAGGTTCTGGAAGCAAAAAGGCCAAGTGGAGTATTGAGAAGAGGAGCTGAAGACCCACATCAGCAAG
GGTACGCTGGCAAGTTCCTGTGCCATGCTGAAAGAGGCTGCCGGGCTTACGGGCTGAAGAGTGGG
CTGAAGAAGCAGGAGCTGCTGGAAGCCCTACCAAGCACTTCCAGGAC
ACGCGTACGCGGCCGCTCGAG – GFP Tag – GTTTAAAC
```

**Protein Sequence:**

>Peptide sequence encoded by RG238928  
 Blue=ORF Red=Cloning site Green=Tag(s)

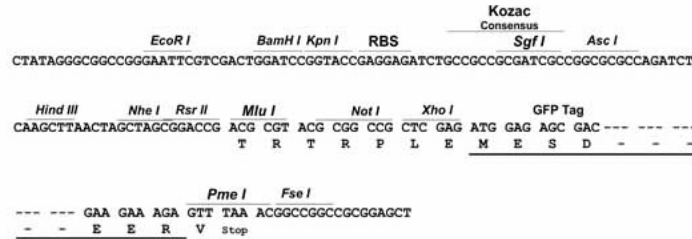
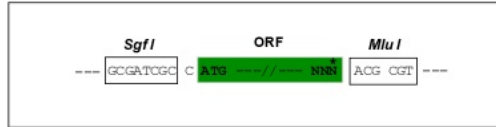
```
MSGWESYYKTEGDEEAEEEEQEENLEASGDYKYSGRDSLIFLVDASKAMFESQSEDELTPFDMSIQELDN
PGAKRIELEDQFKGQGGKRFQDMMGHGSDYSLSEVLWVCANLFSVQFKMSHKRIMLFTNEDNPHGND
SAKASRARTKAGDLRDTGIFLDMHLKPKGGFDISLFYRDIISIAEDEDLRVHFEESKLEDLLRKVRA
KETRKRALSRLKLNKDIVISVGIYNLVQKALKPPPIKLYRETNEPVKTKTRTFNTSTGGLLLPSDTK
RSQIYGSRQIILEKEETEELKRFDDPGLMLMGFKPLVLLKHHYLRPSLFVYPEESLVIGSSTLFSALL
IKCLEKEVAALCRYTPRRNIPPYFVALVPQEEELDDQKIQTTPPGFQLVFLPFADDKRKMPFTEKIMAT
PEQVGMKAIVEKLRFTYRSDSFENPVLQHFRLALALDLMEPEQAVDLTPKVEAMNKRGLSLVDE
FKELVYPPDYNPEGKVKRKHDFNEGSGSRPKVEYSEEELKTHISKGLTKFTVPMLKEACRAYGLKSG
LKKQELLEALTKHFQD
TRTRPLEMESDESGLPAMEIECRITGTLNGVEFELVGGGEGTPEQGRMTNKMSTKGALTFSPYLLSHV
MGYGFYHFGTYPSTYENPFLHAINNGGYNTRIEKYEDGGVLHVSFSYRYEAGRVIGDFKVMGTGFPE
SVIFTDKIIRSNAIVEHLHPMGDNDLDGSFTRTFLRDGGYSSVVDSHMHFKSAIHPSILQNGGPMFA
FRRVEEDHSNTELGIVEYQHAFKTPDADAGEERV
```

**Restriction Sites:**

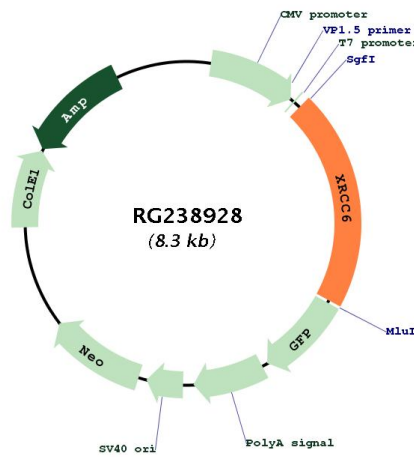
SgfI-MluI

Cloning Scheme:

Cloning sites used for ORF Shutting:



Plasmid Map:



ACCN: NM\_001288977  
 ORF Size: 1704 bp

<b>OTI Disclaimer:</b>	The molecular sequence of this clone aligns with the gene accession number as a point of reference only. However, individual transcript sequences of the same gene can differ through naturally occurring variations (e.g. polymorphisms), each with its own valid existence. This clone is substantially in agreement with the reference, but a complete review of all prevailing variants is recommended prior to use. <a href="#">More info</a>
<b>OTI Annotation:</b>	This clone was engineered to express the complete ORF with an expression tag. Expression varies depending on the nature of the gene.
<b>Components:</b>	The ORF clone is ion-exchange column purified and shipped in a 2D barcoded Matrix tube containing 10ug of transfection-ready, dried plasmid DNA (reconstitute with 100 ul of water).
<b>RefSeq:</b>	<a href="#">NM_001288977.2</a>
<b>RefSeq Size:</b>	2155 bp
<b>RefSeq ORF:</b>	1707 bp
<b>Locus ID:</b>	2547
<b>UniProt ID:</b>	<a href="#">P12956</a>
<b>Cytogenetics:</b>	22q13.2
<b>Protein Families:</b>	Druggable Genome, Transcription Factors
<b>Protein Pathways:</b>	Non-homologous end-joining
<b>MW:</b>	65.6 kDa
<b>Gene Summary:</b>	The p70/p80 autoantigen is a nuclear complex consisting of two subunits with molecular masses of approximately 70 and 80 kDa. The complex functions as a single-stranded DNA-dependent ATP-dependent helicase. The complex may be involved in the repair of nonhomologous DNA ends such as that required for double-strand break repair, transposition, and V(D)J recombination. High levels of autoantibodies to p70 and p80 have been found in some patients with systemic lupus erythematosus. [provided by RefSeq, Jul 2008]