

Product datasheet for **RG238922**

MSF (SEPT9) (NM_001293695) Human Tagged ORF Clone

Product data:

Product Type:	Expression Plasmids
Product Name:	MSF (SEPT9) (NM_001293695) Human Tagged ORF Clone
Tag:	TurboGFP
Symbol:	MSF
Synonyms:	AF17q25; MSF; MSF1; NAPB; PNUTL4; SEPT9; SeptD1; SINT1
Mammalian Cell Selection:	Neomycin
Vector:	pCMV6-AC-GFP (PS100010)
E. coli Selection:	Ampicillin (100 ug/mL)



[View online »](#)

ORF Nucleotide Sequence:

>RG238922 representing NM_001293695.
 Blue=ORF Red=Cloning site Green=Tag(s)

```
GCTCGTTAGTGAACCGTCAGAATTTTGTAAACGACTCACTATAGGGCGGCCGGGAATTCGTGACTG
GATCCGGTACCGAGGAGATCTGCCGCCCGCATCGCC
ATGAAGAAGTCTTACTCAGCCTTGAAGAAGATCTTTGAGGTGCGAGAGGTCGAGACACCCAACCTCCACC
CCACCCCGGAGGTCAGACTCCCTACTCCGAGCCACTGTGCCAGCTCCACCCAGAAATTCAGGAC
CTGGGCGTGAAGAACTCAGAACCCTCGGCCGCCATGTGGACTCCCTAAGCCAACGCTCCCCAAGGCG
TCCTGCGGAGGGTGGAGCTCTCGGGCCCAAGCGCGCCGAGCCGGTGTCCCGGCGCACTGAGCTGTCC
ATTGACATCTCGTCCAAGCAGGTGGAGAACCGGGGCCATCGGCCCGTCCCGGTTGGGCTCAAGAGG
GCCGAGGTGTTGGGCCACAAGACGCCAGAACCAGCCCTCGGAGGACGGAGATCACCATCGTCAAACCC
CAGGAGTCAGCCACCGGAGGATGGAGCCCTGCCTCCAAGGTCCCGAGGTGCCACTGCCCTGCC
ACCGACGACGCCCAAGAGGGTGGAGATCCAGATGCCCAAGCCTGCTGAGGCGCCACCGCCCCAGC
CCAGCCAGACCTTGAGAATTCAGAGCCTGCCCTGTGTCTCAGCTGCAGAGCAGGCTGGAGCCCAAG
CCCCAGCCCCCTGTGGCTGAGGCTACACCCCGGAGCCAGGAGCCACTGAGGCGGCTCCAGCTGCGTT
GGCGACATGGCCGACACCCAGAGATGCCGGGCTCAAGCAGGCCCTGCATCACGGAACGAGAAGGCC
CCGGTGGACTTCGGCTACGTGGGATTGACTCCATCCTGGAGCAGATGCCCGGAAGGCCATGAAGCAG
GGCTTCGAGTTCAACATCATGGTGGTCCGGCAGAGCGGCTTGGGTAATCCACCTTAATCAACACCTC
TTCAAATCCAAAATCAGCCGGAAGTCGGTGCAGCCACCTCAGAGGAGCGCATCCCAAGACCATCGAG
ATCAAGTCCATCACGCACGATATTGAGGAGAAAGGCGTCCGGATGAAGCTGACAGTGATTGACACACCA
GGGTTCCGGGACCATCAACAACGAGAAGTCTGGCAGCCATCATGAAGTTCATCAATGACCAGTAC
GAGAAATACCTGCAGGAGGAGTCAACATCAACCGCAAGAAGCGCATCCCGGACACCCGCGTCCACTGC
TGCTCTACTTCATCCCGCCACCGCCACTCCCTCAGGCCCTGGACATCGATTTATGAAACCGCCTG
AGCAAGGTGGTCAACATCGTCCCTGTCTCGCCAAGCGGACACACTACCCTGGAGGAGAGGGTCCAC
TTCAAACAGCGGATCACCGCAGACCTGCTCCAACGGCATCGACGTGTACCCCAAGAAGGAATTTGAT
GAGGACTCGGAGGACCGGCTGGTGAACGAGAAGTCCGGGAGATGATCCATTTGCTGTGGTGGGAGT
GACCACGAGTACCAGGTCAACGGCAAGAGGATCCTTGGGAGGAAGACCAAGTGGGGTACCATCGAAGT
GAAAACACCACACTGTGAGTTTGCTACCTGCGGGACCTTCTCATCAGGACGCACATGCAGAATC
AAGGACATCACCAGCAGCATCCACTCGAGGCGTACCGTGTGAAGCGCTCAACGAGGCGCAGCAGCGCC
ATGGCCAAAGGATGGAGGAGAAGGAGCCAGAAGCCCGGAGATG
ACCGGTACGCGGCCGCTCGAG - GFP Tag - GTTTAAAC
```

Protein Sequence:

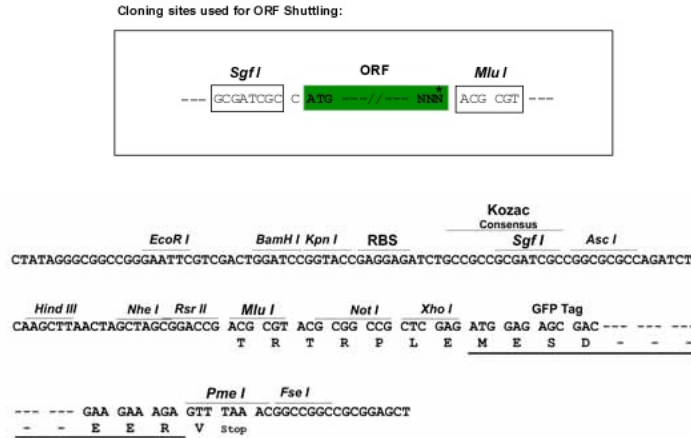
>Peptide sequence encoded by RG238922
 Blue=ORF Red=Cloning site Green=Tag(s)

```
MKKSYSALKRSFEVEEETPNSTPPRRVQTPLLRAVASSTQKFQDLGVKNSEPSARHVDLSQRSFPA
SLRRVELSGPKAAEPVSRRELSIDISSKQVENAGAIGPSRFLKRAEVLGHKTPEPAPRREITIVKP
QESAHRMEPPASKVPEVPTAPATDAAPKRVEIQMPKPAEAPTAPSPAQTLNENEPAPVSQLQSRLEPK
PQPPVAEATPRSQEATEAAPSCVGMADTPRDAGLKQAPASRNEKAPVDFGYVIGDSILEQMRRKAMKQ
GFENIMVVGQSLGKSTLINTLFSKISRKSVQPTSEERIPKTIIEIKSITHDIEEKGVRMKLTVIDTP
FGFDHINNENCWQPIMKFINDQYKYLQEEVNIINRKRIPDTRVHCLYFIPATGHSLRPLDIEFMKRL
SKVVNIIVPIAKADTLLEERVHFKQRITADLLSNGIDVYPQKEFDESEDRLVNEKFRMIPFAVVG
DHEYQVNGKRILGRKTKWGTIEVENTHCFAYLRDLLIRTHMQNIKDITSSIHFEAYRVKRLNEGSSA
MANGMEEKEPEPEM
TRTRPLEMESDESGLPAMEIECRITGTLNGVEFELVGGEGTPEQGRMTNKMSTKGALTFSPYLLSHV
MGYGFYHFGTYPSTYENPFLHAINNGGYNTRIEKYEDGGVLHVSFSYRYEAGRVIGDFKVMGTGFPED
SVIFTDKIIRSNATVEHLHPMGDNDLDGSFTRTFSLRDGGYSSVVDSHMHFKSAIHPISILQNGGPMFA
FRRVEEDHSNTELGIVEYQHAFKTPDADAGEERV
```

Restriction Sites:

SgfI-MluI

Cloning Scheme:



ACCN: NM_001293695

ORF Size: 1701 bp

OTI Disclaimer: The molecular sequence of this clone aligns with the gene accession number as a point of reference only. However, individual transcript sequences of the same gene can differ through naturally occurring variations (e.g. polymorphisms), each with its own valid existence. This clone is substantially in agreement with the reference, but a complete review of all prevailing variants is recommended prior to use. [More info](#)

OTI Annotation: This clone was engineered to express the complete ORF with an expression tag. Expression varies depending on the nature of the gene.

Components: The ORF clone is ion-exchange column purified and shipped in a 2D barcoded Matrix tube containing 10ug of transfection-ready, dried plasmid DNA (reconstitute with 100 ul of water).

RefSeq: [NM_001293695.2](#)

RefSeq Size: 3780 bp

RefSeq ORF: 1704 bp

Locus ID: 10801

UniProt ID: [Q9UHD8](#)

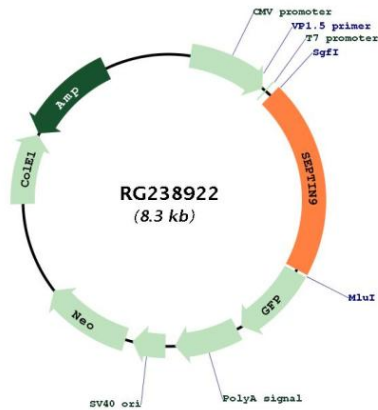
Cytogenetics: 17q25.3

Protein Families: Druggable Genome

MW: 64 kDa

Gene Summary:

This gene is a member of the septin family involved in cytokinesis and cell cycle control. This gene is a candidate for the ovarian tumor suppressor gene. Mutations in this gene cause hereditary neuralgic amyotrophy, also known as neuritis with brachial predilection. A chromosomal translocation involving this gene on chromosome 17 and the MLL gene on chromosome 11 results in acute myelomonocytic leukemia. Multiple alternatively spliced transcript variants encoding different isoforms have been described.[provided by RefSeq, Mar 2009]

Product images:


Circular map for RG238922