

Product datasheet for **RG238921**

CLPTM1 (NM_001282176) Human Tagged ORF Clone

Product data:

Product Type:	Expression Plasmids
Product Name:	CLPTM1 (NM_001282176) Human Tagged ORF Clone
Tag:	TurboGFP
Symbol:	CLPTM1
Mammalian Cell Selection:	Neomycin
Vector:	pCMV6-AC-GFP (PS100010)
E. coli Selection:	Ampicillin (100 ug/mL)



[View online »](#)

ORF Nucleotide Sequence:

>RG238921 representing NM_001282176.
 Blue=ORF Red=Cloning site Green=Tag(s)

```
GCTCGTTTAGTGAACCGTCAGAATTTTGTAAACGACTCACTATAGGGCGGCCGGGAATTCGTGCGACTG
GATCCGGTACCGAGGAGATCTGCCGCCCGGATCGCC
ATGAACCTGCATGTGTACATCTCAGAGCAGCAGCACTTTACAGACTTCAACGCCACGTGGCACTCTTC
TGGGAACAGCAGCATCTTGTGTATGGCGACTGGACTAGCGGCAGAACTCAGACGGCTGCTACGAGCAC
TTTGCTGAGCTCGATATCCACAGAGCGTCCAGCAGAACGGCTCCATCTACATCCACGTTTACTTCACC
AAGAGTGGCTTCCACCCAGACCCCGGCAGAAAGCCCTGTACCGCCGGCTTGCCACAGTCCACATGTCC
CGGATGATCAACAAATACAAGCGCAGACGATTTAGAAAAACAAGAACCCTGCTGACAGGAGAGACAGAA
GCGGACCCAGAAATGATCAAGAGGGCTGAGGACTATGGGCCTGTGGAGGTGATCTCCATTGGCACCC
AACATCACCATCAACATCGTGGACGACCACAGCCGTGGTGAAGGGCAGTGTGCCCCCTCCCTGGAT
CAATATGTGAAGTTCGACGCCGTGAGCGGTGACTACTATCCCATCATCTACTTCAATGACTACTGGAAC
CTGCAGAAGGACTACTACCCATCAACGAGAGCCTGGCCAGCCTGCCGCTCCGCGTCTCCTTCTGCCCA
CTCTCGCTTTGGCGCTGCAGCTCTATGCTGCCAGAGCACAAGTCGCCCTGGAACCTCCTGGGTGAT
GAGTTGTACGAGCAGTACAGATGAGGAGCAGGACTCGGTGAAGGTGGCCCTGCTGGAGACCAACCCCTAC
CTGCTGGCGCTCACCATCATCGTGTCTATCGTTACAGTGTCTTCGAGTTCCTGGCCTTCAAGAATGAT
ATCCAGTTCGGAACAGCCGGCAGTCCCTGGAGGGCCTGTCCGTGCGCTCCGTCTTCTCGCGTCTTTC
CAGTCAATTCGTGGTCTCCTCTACATCCTGGACAACGAGACCAACTTCGTGGTCCAGGTCAGCGTCTTC
ATTGGGTCTCCTCGACCTCTGGAAGATCACCAAGGTGATGGACGTCCGGCTGGACCGAGAGCAGAGG
GTGGCAGGAATCTTCCCCGCTATCCTTCAAGGACAAGTCCACGTATATCGAGTCTCGACCAAGTG
TATGATGATATGGCATTCCGGTACCTGTCTGGATCCTCTTCCCGCTCCTGGGCTGCTATGCCGTCTAC
AGTCTTCTGTACCTGGAGCACAAGGGCTGGTACTCCTGGGTGCTCAGCATGCTCTACGGCTCCTGCTG
ACCTTCGGCTTACACCATGACGCCCCAGCTCTTCACTCAACTACAAGCTCAAGTCTGTGGCCACCTT
CCCTGGCGCATGCTCACCTACAAGGCCCTCAACACATTATCGAGCAGCTGTTCCGCTTTGTATCAAG
ATGCCCGTTATGTACCGGATCGGCTGCCTGCGGGACGATGTGGTTTTCTCATCTACCTCTACCAACGG
TGGATCTACCGCGTCGACCCACCCGAGTCAACGAGTTTGGCATGAGTGGAGAAGACCCACAGCTGCC
GCCCCCGTGGCCGAGGTTCCACAGCAGCAGGGGCCCTCACGCCACACCTGCACCCACCACGACCACC
GCCACCAGGGAGGAGGCTCCACGTCCCTGCCACCAAGCCACCCAGGGGGCCAGCTCTGCCAGCGAG
CCCCAGGAAGCCCTCCAAGCCAGCAGAGGACAAGAAAAGGAT
ACGCGTACGCGGCCGCTCGAG – GFP Tag – GTTTAAAC
```

Protein Sequence:

>Peptide sequence encoded by RG238921
 Blue=ORF Red=Cloning site Green=Tag(s)

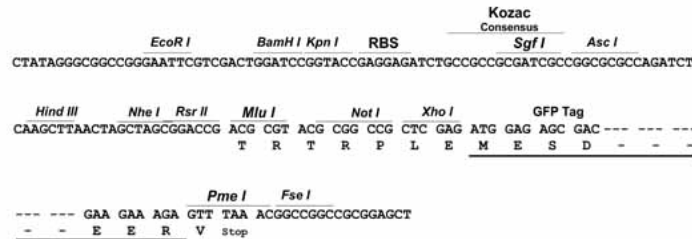
```
MNLHVYISEHEHFTDFNATSALFWEQHDLVYGDWTSGENSDGCEHFAELDIPQSVQQNGSIYIHVYFT
KSGFHPDPRQKALYRRLATVHMSRMINKYKRRRFQKTKNLLTGETADPEMIKRAEDYGPVEVISHWHP
NITINIVDDHTPWVKGSPVPLDQYVKFDAVSGDYPIIYFNDYWNLQKDYYPINESLASLPLRVSFCL
LSLWRWQLYAAQSTKSPWNFLGDELYEQSDEEQSVKVALLETNPYLLALTIIVSVHVSVEFLAFKND
IQFWNSRQSLLEGLSVRSVFFGVFQSFVLLYILDNETNFVYVQVSFIGVLIDLWKITKVMVRLDREHR
VAGIFPRLSFKDKSTYIESSTKYVYDDMAFRYLSWILFPLLGCYAVYSLLYLEHKGWYSWLSMLYGFLL
TFGFITMTPQLFINYKLSVAHLPWRMLTYKALNTFIDDLFAFVIKMPVMYRIGCLRDDVVFFIYLYQR
WIYRVDPTRVNEFGMSGEDPTAAAPVAEVPTAAGALTPAPTATATREEASTSLPTKPTQGASSASE
PQEAPPKPAEDKKK
TRTRPLEMESDESGLPAMEIECRITGTLNGVEFELVGGEGTPEQGRMTNKMSTKGALTFSPYLLSHV
MGYGFYHFGTYPSGYENPFLHAINNGGYNTRIEKYEDGGVLHVSFSYRYEAGRVIGDFKVMGTGFPED
SVIFTDKIIRSNATVEHLHPMGDNDLDGSFTRTFLSLRDGGYSSVVDSHMHFKSAIHPISILQNGGPMFA
FRRVEEDHSNTELGIVEYQHAFKTPDADAGEERV
```

Restriction Sites:

Sgfl-RsrII

Cloning Scheme:

Cloning sites used for ORF Shuttling:


ACCN: NM_001282176

ORF Size: 1701 bp

OTI Disclaimer: The molecular sequence of this clone aligns with the gene accession number as a point of reference only. However, individual transcript sequences of the same gene can differ through naturally occurring variations (e.g. polymorphisms), each with its own valid existence. This clone is substantially in agreement with the reference, but a complete review of all prevailing variants is recommended prior to use. [More info](#)

OTI Annotation: This clone was engineered to express the complete ORF with an expression tag. Expression varies depending on the nature of the gene.

Components: The ORF clone is ion-exchange column purified and shipped in a 2D barcoded Matrix tube containing 10ug of transfection-ready, dried plasmid DNA (reconstitute with 100 ul of water).

RefSeq: [NM_001282176.1](#), [NP_001269105.1](#)
RefSeq Size: 2522 bp

RefSeq ORF: 1704 bp

Locus ID: 1209

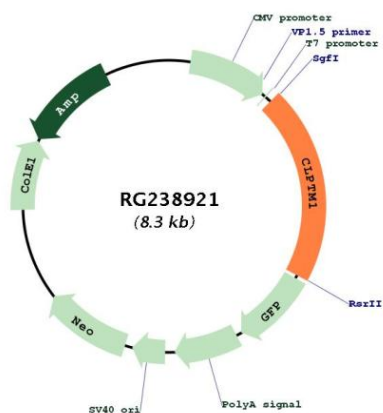
UniProt ID: [O96005](#)
Cytogenetics: 19q13.32

Protein Families: Transmembrane

MW: 66 kDa

Gene Summary: May play a role in T-cell development.[UniProtKB/Swiss-Prot Function]

Product images:



Circular map for RG238921