

Product datasheet for **RG238912**

FAM222B (NM_001288631) Human Tagged ORF Clone

Product data:

Product Type:	Expression Plasmids
Product Name:	FAM222B (NM_001288631) Human Tagged ORF Clone
Tag:	TurboGFP
Symbol:	FAM222B
Synonyms:	C17orf63
Mammalian Cell Selection:	Neomycin
Vector:	pCMV6-AC-GFP (PS100010)
E. coli Selection:	Ampicillin (100 ug/mL)



[View online »](#)

ORF Nucleotide Sequence:

>RG238912 representing NM_001288631.
 Blue=ORF Red=Cloning site Green=Tag(s)

```

GCTCGTTAGTGAACCGTCAGAATTTTGTAAACGACTCACTATAGGGCGGCCGGGAATTCGTGACTG
GATCCGGTACCGAGGAGATCTGCCGCCCGCATCGCC
ATGAGGTCCAAGTTCCCCCTGCCTCTGCTAAAAAACCTCAGAGTTGGTACTAACTTGAACAAAGG
GACTCTTCTACTCATCAAGGGGACACTACACAGAAAATGAGAACTGCTCACTATCCTACCCAGCCGAA
TTGGATGCGTATGCTAAGAAGGTCGAAACAACCCACTGACTATAAAAAATCTTCCCAACAGTGTGAAG
GTTCCCCAGCGAAACACGTTTCGTCTGACTGTGAACGGCCTCGACACATCAGCCAGCGCTACAGCCCC
TACCCGACACAGGCTGCCACCAAGGCAGGCCTGCTTGCCATTGTCAAAGTGCCAGCCAAAAGCATACTC
AAGGACTTTGACGGCACCCGAGCCCGTTGCTCCCTGAGGCCATCATGAACCCCCAGTGGCACCCTAT
GCTACTGTGGCACCCAGCACTTTAGCCACCCAGGCCAGGCTCTGGCCCGCCAGCAGGCCCTGCAG
CATGCACAGACCTGGCCATGCCCTCCCGAGACGCTGCAGCACCTCAGGGTATCCCGCCACCCAG
GCACTGTCCACCCTCAGAGCCTCCAGCAGCCTCAGGGCCTGGGCCACCCTCAGCCCATGGCCAAAACC
CAGGGCTTGGTCCACCCTCAGGCCTGGCTCACCAGGGTCTCCAGCACCCCAATCCCTTGCTGCAT
GGAGGCCGAAGATGCCAGACTCAGATGCCCCCCGAATGTGACCGTGTCTACCTCAACTATCCCCCTT
TCAATGGCGGCCACTCTGCAGCACAGCCAGCCTCCGGACCTGAGTAGCATCGTGACCCAGATCAACCAG
TTTTGCCAGACGAGGGCAGGCATCAGCACTACCTCAGTGTGTGAGGGCCAGATCGCAACCCAGCCCC
ATTAGTCGCAGTCTGCTCATCAATGCAAGCACCCGGGTGTGACCCACAGCGTCCCCACACCAATGCCT
TCATGTGTGGTCAATCCCATGGAGCACACCCACGCGGCCACCGCCGCTTGCCCTGCTGCAGGTCTGTG
AACCTGCCACAGGCATCTCTCGGTCCCCTGGCTACCCTAGCGACCTCAAGCCAGTCACTGGAAC
CAGCACCAAGTGGCCACCTACAGCAGATGTGCAGCGAGGCTAGTGGGACGCCAGCCCTGGCCTGACA
GGCAAGCATGCGCAGGACGCGAGTTGGCAGGGCCTGGCTTTGTGGCAAGGCCCTGCCATACCCGCGAG
GAACTCTGCCTGGCGCAGTCTTCCATCTGAAGCCACCCCTGGAAAAGCCGACCCATCCCCACCGTCA
AACGGCATGGCAGCCCCATTGGCCTACCCCAATGGTCACTACTTCCAACCCTGTGGAACAACATTCTG
CCCCTCCCAATAGCGACAGCTCGGGTCTCAGGACCTTGCCATGCCGTTCCACGGTGGGAGCCACACA
GGTGCACCCCTCGACTGTGCGGCAGCTCCCGGGGCCACTACCGAGCAGGGACCGGGGGCGGTCCAGTG
GCAAGCCAGAACAGCTTGATGCAACAGTGGATTACCTAAGTGGGGATTCCAACAGGCCTGCTCCGA
GAACAGAGCCTGGCCATGCTGAGCAAGGCCACCAGCCCTGGCAACCGAGCCCCGATCCACAGAG
AGTCGAAGTCTTCATATTCAGCACCCAGGGTATAGA
ACGCGTACGCGGCCGCTCGAG – GFP Tag – GTTTAAAC
  
```

Protein Sequence:

>Peptide sequence encoded by RG238912
 Blue=ORF Red=Cloning site Green=Tag(s)

```

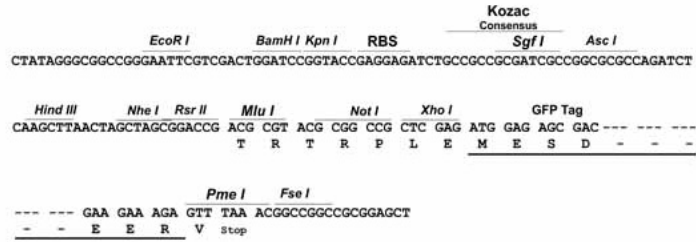
MRSSFPLASAKNLRVGTNLEQRDSSTHQGDTTQKMRTAHYPTPAELDAYAKKVANNPLTIKIFPNSVK
VPQRKHVRRRTVNGLDTSARQYSPYPTQAATKAGLLAIVKVPKSLKDFDGTARLLPEAIMNPPVAPY
ATVAPSTLAHPQAQALARQQALQHAQTLAHAPPQTLQHPQGIPPPQALSHPQSLQPPQGLGHPQMAQT
QGLVHPQALAHQGLQHPHNPLLHGGRKMPDSDAPPNVTVSTSTIPLSMAATLQHSQPPDLSSIVHQINQ
FCQTRAGISTTSVCEQGIANPSPISRSLLINASTRVSTHSVPTPMPSCVVPMEHTHAATAALPAAGPV
NLPTGISRVPTGYPSDLKPVWQHQHLAHLQQMCSEASGTPAPGLTGKHAAGRELAPGFVKGAPAYPQ
ELCLAQSFHLKPPLEKPTSPPPVNGMAAPLAYPNGHYFQPLWNNILPTPNSDSSGSQDLAMPFHGGQPT
GAPLDCAAAPGAHYRAGTGGGPVAVSNLMTQVDYLSGDFQQACFREQLAMLKAHRAPGNRAPDPT
SRSLHIQHPGYR
TRTRPLEMESDESGLPAMEIECRITGTLNGVEFELVGGEGTPEQGRMTNKMSTKGALTFSPYLLSHV
MGYGFYHFGTYPSGYENPFLHAINNGGYNTRIEKYEDGGVLHVSFSYRYEAGRVIGDFKVMGTGFPE
SVIFTDKIIIRSNATVEHLHPMGDNDLDGSFTRTFSLRDGGYSSVVDSDSHMHFKSAIHPSILQNGGPMFA
FRRVEEDHSNTELGIVEYQHAFKTPDADAGEERV
  
```

Restriction Sites:

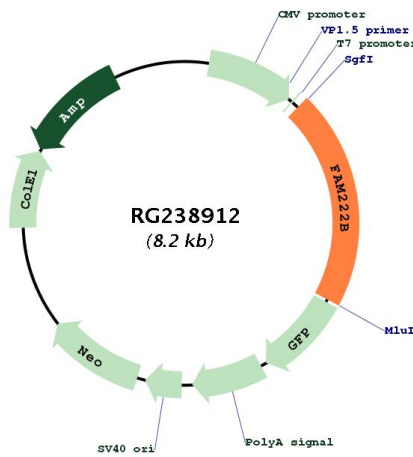
SgfI-MluI

Cloning Scheme:

Cloning sites used for ORF Shutting:



Plasmid Map:



ACCN: NM_001288631
 ORF Size: 1692 bp

OTI Disclaimer:	The molecular sequence of this clone aligns with the gene accession number as a point of reference only. However, individual transcript sequences of the same gene can differ through naturally occurring variations (e.g. polymorphisms), each with its own valid existence. This clone is substantially in agreement with the reference, but a complete review of all prevailing variants is recommended prior to use. More info
OTI Annotation:	This clone was engineered to express the complete ORF with an expression tag. Expression varies depending on the nature of the gene.
Components:	The ORF clone is ion-exchange column purified and shipped in a 2D barcoded Matrix tube containing 10ug of transfection-ready, dried plasmid DNA (reconstitute with 100 ul of water).
RefSeq:	NM_001288631.2
RefSeq Size:	4350 bp
RefSeq ORF:	1695 bp
Locus ID:	55731
UniProt ID:	Q8WU58
Cytogenetics:	17q11.2
MW:	60.3 kDa