

Product datasheet for **RG238905**

FAM222B (NM_001288634) Human Tagged ORF Clone

Product data:

Product Type:	Expression Plasmids
Product Name:	FAM222B (NM_001288634) Human Tagged ORF Clone
Tag:	TurboGFP
Symbol:	FAM222B
Synonyms:	C17orf63
Mammalian Cell Selection:	Neomycin
Vector:	pCMV6-AC-GFP (PS100010)
E. coli Selection:	Ampicillin (100 ug/mL)



[View online »](#)

ORF Nucleotide Sequence:

>RG238905 representing NM_001288634.
 Blue=ORF Red=Cloning site Green=Tag(s)

```

GCTCGTTTAGTGAACCGTCAGAATTTTGTAAACGACTCACTATAGGGCGGCCGGGAATTCGTGACTG
GATCCGGTACCGAGGAGATCTGCCGCCCGGATCGCC
ATGCTAGCCTGTCTACCAGGGCCAGGTGACCTGTCTTTTCTCACACGCAGATGAACACT
GGACTTCAGAAATGGGACACTACACAGAAAATGAGAAGTCTCACTATCCTACCCAGCCGAATTGGAT
GGGTATGCTAAGAAGGTCGAAACAACCCACTGACTATAAAAATCTTCCCAACAGTGTGAAGTTCCC
CAGCGGAAACACGTTTCGTCTACTGTGAACGGCCTCGACACATCAGCCCAGCGCTACAGCCCTACCCG
ACACAGGCTGCCACCAAGGCAGGCTGCTTGCATTGTCAAAGTGCCAGCCAAAAGCATACTCAAGGAC
TTTGACGGCACCCGAGCCGGTTGCTCCCTGAGGCCATCATGAACCCCCAGTGGCACCCTATGCTACT
GTGGCACCCAGCACTTTAGCCCACCCAGGCCAGGCTCTGGCCCGCCAGCAGGCCCTGCAGCATGCA
CAGACCTGGCCATGCCCTCCCAGACGCTGCAGCACCCCTCAGGGTATCCCGCCACCCAGGCACTG
TCCCACCTCAGAGCCTCCAGCAGCCTCAGGGCCTGGGCCACCCCTCAGCCATGGCCAAACCCAGGGC
TTGGTCCACCTCAGGCCCTGGCTCACCAGGGTCTCCAGCACCCCAATCCCTTGCTGCATGGAGGC
CGGAAGATGCCAGACTCAGATGCCCCCCGAATGTGACCGTGTCTACCTCAACTATCCCCCTTTCATG
GCGGCCACTCTGCAGCACAGCCAGCCTCCGGACCTGAGTAGCATCGTGCACCAGATCAACCAGTTTTGC
CAGACGAGGGCAGGCATCAGCACTACCTCAGTGTGTGAGGGCCAGATCGCCAACCCAGCCCATAGT
CGCAGTCTGCTCATCAATGCAAGCACCCGGGTGTCGACCCACAGCGTCCCACACCAATGCCTTCATGT
GTGGTCAATCCCATGGAGCACACCCACGCGGCCACCGCCGCTTGCTGCTGCAGTCTGTCAACCTG
CCCACAGGCATCTCTCGGTCCCCTAGGCTACCTAGCGACCTCAAGCCAGTCACTGGAACAGCAC
CAGCTGGCCACCTACAGCAGATGTGCAGCGAGGCTAGTGGGACGCCAGCCCTGGCCTGACAGGCAAG
CATGCGGCAGGACGCGAGTTGGCAGGGCTGGCTTTGTGGGCAAGGCCCTGCCTACCCGACAGAACTC
TGCTGGCGCAGTCTTCCATCTGAAGCCACCCCTGGAAAAGCCGACCCATCCCACAGTCAACGGC
ATGGCAGCCCATTTGGCTACCCCAATGGTCACTACTTCCAACCCTGTGGAACAACATTCTGCCACT
CCCAATAGCGACAGCTCGGGTCTCAGGACCTTGCATGCCGTTCCACGGTGGGAGCCACAGGTGCA
CCCCTCGACTGTGCGGACGCTCCCGGGGCCACTACCGAGCAGGGACCGGGGGCGGTCCAGTGGCAAGC
CAGAACAGCTTGATGCAAACAGTGGATTACCTAAGTGGGATTTCCAACAGGCCTGCTTCCGAGAACAG
AGCCTGGCCATGCTGAGCAAGGCCACCGAGCCCTGGCAACCGAGCCCCGATCCCACAGAGAGTCGA
AGTCTTCATATTCAGCACCCAGGTATAGA
ACGCGTACGCGGCCGCTCGAG – GFP Tag – GTTAAAC
  
```

Protein Sequence:

>Peptide sequence encoded by RG238905
 Blue=ORF Red=Cloning site Green=Tag(s)

```

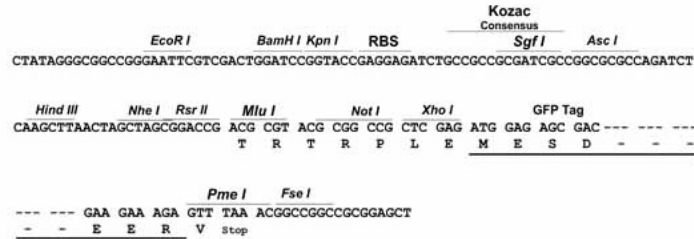
MLACLPGPGLSFQLLSHTQMNTGLQKWDTTQKMRTAHYPTPAELDAYAKKVANNPLTIKIFPNSVKVP
QRKHVRRTVNGLDTSAQRYSPYPTQAATKAGLLAIVKVPKAKSILKDFDGTARLLPEAIMNPPVAPYAT
VAPSTLAHPQAQALARQALQHAQTLAHAPPQTLQHPQGIPPPQALSHPQSLQPPQGLGHPQPMATQGL
LVHPQALAHQGLQHPHNPLLHGGRKMPDSDAPPNVTVSTIPLSMAATLQHSQPPDLSSIVHQINQFC
QTRAGISTTSVCEGQIANPSPISRSLLINASTRVSTHSVPTPMPSCVVPMEHTHAATAALPAAGPVNL
PTGISRVPTGYPSDLKPVTWNQHLAHLQMCSEASGTPAPGLTGKHAAGRELAGPFGVGPAPYQEL
CLAQSFHLKPPLEKPTSPVNGMAAPLAYPNHYFQPLWNNILPTNSDSSGSQDLAMPFHGGQPTGA
PLDCAAAPGAHYRAGTGGGPVAVSNLMTVDYLSGDFQQACFREQSLAMLKAHRAPGNRAPDPTESR
SLHIQHPGYR
TRTRPLEMESDESGLPAMEIECRITGTLNGVEFELVGGEGTPEQGRMTNKMSTKGALTFSPYLLSHV
MGYGFYHFGTYPSTYSGYENPFLHAINNGGYNTRIEKYEDGGVLHVSFSYRYEAGRVIGDFKVMGTGFPED
SVIFTDKIIIRSNAVEHLHPMGDNDLDGSFTRTFSLRDGGYSSVVDSDSHMHFKSAIHPHILQNGGPMFA
FRRVEEDHSNTELGIVEYQHAFKTPDADAGEERV
  
```

Restriction Sites:

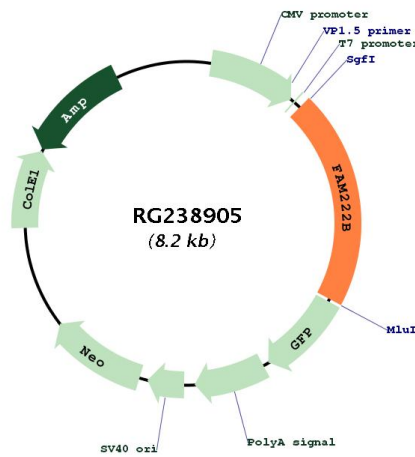
SgfI-MluI

Cloning Scheme:

Cloning sites used for ORF Shutting:



Plasmid Map:



ACCN: NM_001288634
 ORF Size: 1686 bp

OTI Disclaimer:	The molecular sequence of this clone aligns with the gene accession number as a point of reference only. However, individual transcript sequences of the same gene can differ through naturally occurring variations (e.g. polymorphisms), each with its own valid existence. This clone is substantially in agreement with the reference, but a complete review of all prevailing variants is recommended prior to use. More info
OTI Annotation:	This clone was engineered to express the complete ORF with an expression tag. Expression varies depending on the nature of the gene.
Components:	The ORF clone is ion-exchange column purified and shipped in a 2D barcoded Matrix tube containing 10ug of transfection-ready, dried plasmid DNA (reconstitute with 100 ul of water).
RefSeq:	NM_001288634.2
RefSeq Size:	4248 bp
RefSeq ORF:	1689 bp
Locus ID:	55731
UniProt ID:	Q8WU58
Cytogenetics:	17q11.2
MW:	59.7 kDa