

Product datasheet for **RG238897**

CDK5RAP1 (NM_001278169) Human Tagged ORF Clone

Product data:

| | |
|---------------------------|--|
| Product Type: | Expression Plasmids |
| Product Name: | CDK5RAP1 (NM_001278169) Human Tagged ORF Clone |
| Tag: | TurboGFP |
| Symbol: | CDK5RAP1 |
| Synonyms: | C20orf34; C42; CGI-05; HSPC167 |
| Mammalian Cell Selection: | Neomycin |
| Vector: | pCMV6-AC-GFP (PS100010) |
| E. coli Selection: | Ampicillin (100 ug/mL) |



[View online »](#)

ORF Nucleotide Sequence:

>RG238897 representing NM_001278169.
 Blue=ORF Red=Cloning site Green=Tag(s)

```
GCTCGTTTAGTGAACCGTCAGAATTTTGTAAACGACTCACTATAGGGCGGCCGGGAATTCGTGACTG
GATCCGGTACCGAGGAGATCTGCCGCCCGCATCGCC
ATGACCCGGCCTGAAGTAGCGCGGAACGGAAGTCGTTGTATGAACGCAGCGCGGACCTGTGAGG
GGATCCGACTTCCCGCAGAACTTACGCTGCGGGACCCCGGCACTGTTGCTGCTGCGGGAGTGCCTCA
GCTCCTCAGGAGAAGCTGTCTTCAGAAGTGGAAGACCCACCTCCCTATCTCATGATGGATGAACTTCTT
GGAAGGCAGAGAAAAGTCTACCTCGAGACCTATGGCTGCCAGATGAATGTGAATGACACAGAGATAGCC
TGGTCCATCTTACAGAAGAGTGGCTACCTGCGGACCAGTAACCTCCAAGAGGCAGATGTGATTCTCCTT
GTCACATGCTCTATCAGGGAGAAGGCTGAGCAGACCATCTGGAACCGTTTACATCAGCTTAAAGCCTTG
AAGACAAGGCGGCCCGCTCCCGGGTCTCTGAGGATTGGAATTCTAGGCTGCATGGCTGAGAGGTTG
AAGGAGGAGATTCTAACAGAGAGAAAATGGTAGATATTTGGCTGGTCTGATGCCTACCGGGACCTT
CCCCGGCTGCTGGCTGTTGCTGAGTCGGCCAGCAAGCTGCCAACGTGCTGCTCTCTGGACGAGACC
TATGCTGATGTCATGCCAGTCCAGACAAGCGCCAGTGCCACGTGCTGCCTTTGTGCAATCATGCGAGGC
TGTGACAACATGTGTAGCTACTGCATTGTTCTTTACCCGGGGCAGGGAGAGGAGTCCGGCTATTGCC
TCCATTCTAGAGGAAGTGAAGAAGCTTTCTGAGCAGGGGCTGAAAGAAGTGACACTTCTTGGTCAGAAT
GTTAATAGTTTTCCGGACAATTCGGAGGTCAGTTCAACAGTGCAGTGCCTACCAATCTCAGTCGTGGC
TTTACCACCAACTATAAAACCAAGCAAGGAGGACTTCGTTTTGCTCATCTTCTGGATCAGGTTCTCCAGA
GTAGATCCTGAAATGAGGATCCGTTTTACCTCTCCCCACCCCAAGGATTTTCTGATGAGGTTCTGCAG
CTGATTCATGAGAGAGATAACATCTGTAACAGATCCACCTGCCAGCCCAGAGTGAAGCAGCCGTGTG
TTGGAGGCCATGCGGAGGGGATATTCAAGAGAAGCTTATGTGGAGTTAGTTCACCATATTAGAGAATCT
ATTCCAGGTGTGAGCCTCAGCAGCGATTTCAATTGCTGGCTTTTGTGGTGAGACGGAGGAAGATCACGTC
CAGACAGTCTCTTTGCTCCGGGAAGTTACAGTACAACATGGGCTTCTCTTTGCCTACAGCATGAGACAG
AAGACACGGGCATATCATAGGCTGAAGGATGATGTCCCGAAGAGGTAATAAAGGCGTTTGGAGGAA
CTCATCACTATCTCCGAGAAGAAGCAACAAAAGCCAATCAGACCTCTGTGGGCTGTACCCAGTTGGTG
CTAGTGAAGGGCTCAGTAAACGCTCTGCCACTGACCTGTGTGGCAGGAATGATGGAAACCTTAAGGTG
ATCTTCCCTGATGCAGAGATGGAGGATGTCAATAACCCTGGGCTCAGGGTCAGAGCCCAGCCTGGGGAC
TATGTGCTGGTGAAGATCACCTCAGCCAGTTCTCAGACACTTAGGGGACATGTTCTCTGCAGGACCACT
CTGAGGGACTCTTCTGCATATTGC
ACGCGTACGCGGCCGCTCGAG - GFP Tag - GTTAAAC
```

Protein Sequence:

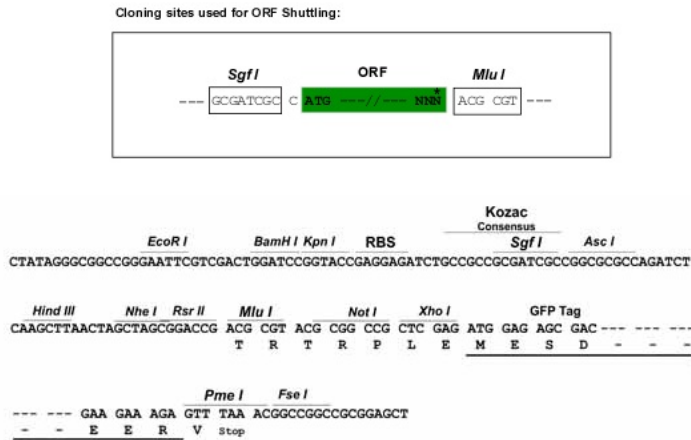
>Peptide sequence encoded by RG238897
 Blue=ORF Red=Cloning site Green=Tag(s)

```
MTRPEVAERKSLVYERSGGPVRGSDLPAELTLRDPGHCCCCGSASAPQEKLSEVEDPPPYLMMDELL
GRQRKVYLETYGCMNVNDTEIAWSILQKSGYLRTSNLQEADVILLVTCISIREKAEQTIWNRLHQLKAL
KTRRRSRVPLRIGILGCMAERLKEEILNREKMVDILAGPDAYRDLPRLLAVAESGQQAANVLLSLDET
YADVMPVQTSASATSAFVSI MRGCDNMCSYCI VPFTRGRERSRPIASILEEVKKLSEQGLKEVTLGQN
VNSFRDNSEVQFN SAVPTNLSRGFTTNYKTKQGGLRFAHLLDQVSRVDP EMRIRFTSPHPKDFPDEVLQ
LIHERDNICKQIHLPAQSGSSRVLEAMRRGYSREAYVELVHHIRESIPGVSLSSDFIAGFCGETEEDHV
QTVSLLREVQYNMGFLFAYSMRQKTRAYHRLKDDVPEEVKLRRLEELITIFREEATKANQTSVGTQLV
LVEGLSKRSATDL CGRNDGNLKVIFPDAEMEDVNNPGLRVRAQPGDYVLVKITSASSQTLRGHVL CRTT
LRDSSAYC
TRTRPLEMESDESGLPAMEIECRITGTLNGVEFELVGGGEGTPEQGRMTNKMKSTKGALTFSPYLLSHV
MGYGFYHFGTYPSGYENPFLHAINNGGYNTRIEKYEDGGVLHVFSYRYEAGRVIGDFKVMGTGFPEDE
SVIFTDKIIRSNAIVEHLHPMGDNDLDGSFTRTFSLRDGGYSSVVD SHMHFKSAIHPSILQNGGPMFA
FRRVEEDHSNTELGIVEYQHAFKTPDADAGEERV
```

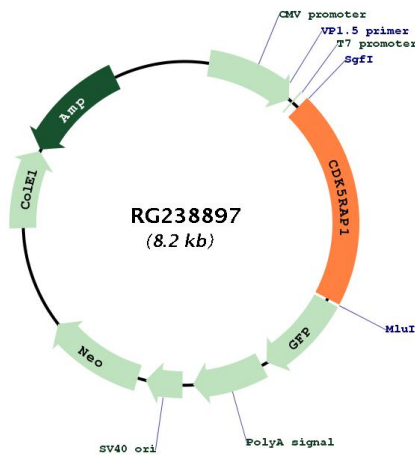
Restriction Sites:

SgfI-MluI

Cloning Scheme:



Plasmid Map:



ACCN: NM_001278169

ORF Size: 1680 bp

| | |
|------------------------|--|
| OTI Disclaimer: | The molecular sequence of this clone aligns with the gene accession number as a point of reference only. However, individual transcript sequences of the same gene can differ through naturally occurring variations (e.g. polymorphisms), each with its own valid existence. This clone is substantially in agreement with the reference, but a complete review of all prevailing variants is recommended prior to use. More info |
| OTI Annotation: | This clone was engineered to express the complete ORF with an expression tag. Expression varies depending on the nature of the gene. |
| Components: | The ORF clone is ion-exchange column purified and shipped in a 2D barcoded Matrix tube containing 10ug of transfection-ready, dried plasmid DNA (reconstitute with 100 ul of water). |
| RefSeq: | NM_001278169.1 , NP_001265098.1 |
| RefSeq Size: | 1911 bp |
| RefSeq ORF: | 1683 bp |
| Locus ID: | 51654 |
| UniProt ID: | Q96SZ6 |
| Cytogenetics: | 20q11.21 |
| MW: | 63.4 kDa |
| Gene Summary: | This gene encodes a regulator of cyclin-dependent kinase 5 activity. This protein has also been reported to modify RNA by adding a methylthio-group and may thus have a dual function as an RNA methylthiotransferase and as an inhibitor of cyclin-dependent kinase 5 activity. Alternative splicing results in multiple transcript variants that encode different isoforms. [provided by RefSeq, May 2013] |