

Product datasheet for **RG238881**

Dynamin 3 (DNM3) (NM_001278252) Human Tagged ORF Clone

Product data:

Product Type:	Expression Plasmids
Product Name:	Dynamin 3 (DNM3) (NM_001278252) Human Tagged ORF Clone
Tag:	TurboGFP
Symbol:	DNM3
Synonyms:	Dyna III
Mammalian Cell Selection:	Neomycin
Vector:	pCMV6-AC-GFP (PS100010)
E. coli Selection:	Ampicillin (100 ug/mL)



[View online »](#)

ORF Nucleotide Sequence:

>RG238881 representing NM_001278252.
 Blue=ORF Red=Cloning site Green=Tag(s)

```

GCTCGTTTAGTGAACCGTCAGAATTTTGAATACGACTCACTATAGGGCGGCCGGGAATTCGTGACTG
GATCCGGTACCGAGGAGATCTGCCGCCCGCATCGCC
ATGGGGAACCGGGAGATGGAGGAGCTGATCCCGCTGGTGAACCGTCTGCAGGACGCGTTTTTCGGCGCTG
GGACAGAGCTGCCTGCTGGAGCTGCCGAGATCGCCGTTGGGCGGCCAGAGCGCCGGCAAGAGCTCG
GTGCTCGAGAACTTCGTGGGCAGGGACTTCTCCCTCGAGGGTCGGGCATTGTAACAAGACGACCTCTT
GTGCTGCAGCTTGTACTTCTAAAGCAGAATATGCCGAGTTTCTACATTGCAAAGGAAAGAAATTTACA
GATTTTGTGAAGTTCGCCTTGAGATTGAAGCAGAAACAGATCGCGTGACTGGAATGAATAAAGGCATT
TCCTCCATACCCATTAATTTACGAGTCTATCCACACAGTGTTAAATCTAACCTTATTGATCTACCT
GGAATAACTAAAGTGCCTGTGGGAGATCAGCCACCAGATATCGAGTATCAGATCAGAGAAATGATTATG
CAGTTCATCACGAGGGGAGAACTGTCTGATTTTAGCTGTTACTCCAGCCAACTGATCTTGCAAACCTCA
GATGCGCTGAAGTAGCTAAAGAAGTTGATCCTCAAGGTCTGAGAACCATTGGAGTTATACCAAACCTG
GACCTTATGGATGAAGGAACGGATGCCAGGGATGTTCTAGAGAACAACCTGTTGCCTCTTCGAGGGGT
TACGTGGGGTGGTAAACAGAAGCCAGAAGGACATAGATGGGAAGAAGGACATAAAGGCAGCCATGCTG
GCAGAGAGGAAGTTTTCTTTCCACCCGGCTTACAGACATATCGCTGACCGAATGGGAACCCACAC
CTGCAGAAGTCTTAATCAGCAACTTACCAACCACATTCGGGATACCCTACCAAACCTCAGGAACAAA
CTACAGGGACAGTTGCTCTCCATAGAACATGAAGTAGAAGCCTACAAAAATTTCAAACGAGAAGACCCA
ACAAGGAAGACCAAAGCATTGCTGCAGATGGTTCAGCAATTTGCTGTGGACTTTGAGAAGAGAATTGAA
GGGTACAGGGATCAAGTAGATACCCTGGAACCTCAGGTGGTGTAAAATCAATCGTATTTTTCATGAA
CGCTTTCTTTTGGATAGTAAAGATGGAGTTCAATGAGAAAGAATTGCGAAGAGAATAAGCTATGCA
ATCAAAAACATACATGGTATCAGGACAGGGTTGTTACTCCAGACATGGCATTGGAAGCGATAGTCAAG
AAACAGATTGTAAGTTGAAAGGCCTTCCCTTGAAGAGTGTGGATCTGGTAATACAAGAATTAATCAAC
ACTGTGAAGAAGTGTACCAAAAACTGGCAAACTTCCCCAGACTCTGCGAGGAAACGAAAAGGATTGTT
GCTAACCCACATTCGTGAGCGAGAAGGGAAGACAAAGGACCAGGTATTGCTATTGATTGACATTCAAGTC
TCTTACATCAACACCAACCATGAAGACTTCATTGGCTTCGCAATGCTCAGCAGAGGAGCAGTCAGGTT
CACAAGAAAACACAGTTGAAAATCAGGTGATTCGCAAGGGTGGCTCACCATCAGCAACATTGGCATC
ATGAAAGCGGCTCGAAGGGATACTGGTTCGTCTTACTGCGGAAAGCTGTCCTGGTATAAAGATGAT
GAGAACATT
AGCGGACCGACGCGTACGCGGCCGCTCGAG - GFP Tag - GTTAAAC
  
```

Protein Sequence:

>Peptide sequence encoded by RG238881
 Blue=ORF Red=Cloning site Green=Tag(s)

```

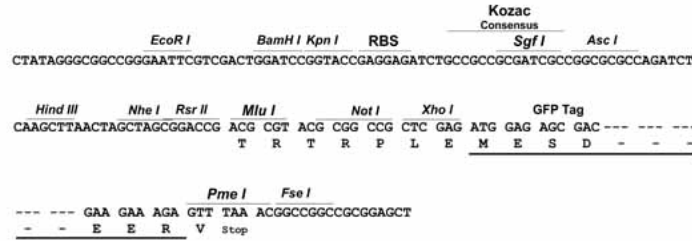
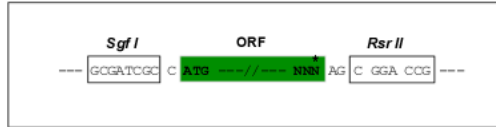
MGNREMEELIPLVNRLQDAFSALGQSCLELPLQIAVVGQSAGKSSVLENFVGRDFLPRGSGIVTRRPL
VLQLVTSKAEYAEFLHCKGKKFTDFDEVRLIEAETDRVTGMNKGISSIPINLRVYSPHVLNLTIDLPL
GITKVPVGDQPPDIEYQIREMIMQFITRENCLILAVTPANTDLANSALKLAKEVDPQGLRTIGVITKL
DLMDEGTDARDVLENKLLPLRRGYVGVNRSQKIDGKKDIKAAMLAERKFFLSHPAYRHIADRMGTPH
LQKVLNQQLTNHIRDTPNFRNKLQGLLSIEHEVEAYKNFKPEDPTRKTKALLQMVQFVDFEKRIE
GSGDQVDTLELSSGAKINRIFHERFPFIVKMEFNEKLRREISYAIKNIHGIRTLFTPDMAFEAIVK
KQIVKLGPSLKSVDLVIQELINTVKKCTKKLANFPRLCEETERIVANHIREGKTKDQVLLLDIQV
SYINTNHEDFIGFANAQRSSQVHKKTTVGNQVIRKQWLTISNIGIMKGGSKGYWFLTAESLSWKDD
ENI
SGPTRTRPLEMESDESGLPAMEIECRITGTLNGVEFELVGGEGTPEQGRMTNKMSTKGALTFSPYLL
SHVMGYGFYHFGTYPSTYENPFLHAINNGGYTNTRIEKYEDGGVLHVSFSYRYEAGRVIQDFKVMGTGF
PEDSVIFTDKIIRSNATVEHLHPMGDNDLDGSFTRTFLRDGGYSSVVDSHMHFKSAIHPSILQNGGP
MFAFRVEEDHSNTELGIVEYQHAFKTPDADAGEERV
  
```

Restriction Sites:

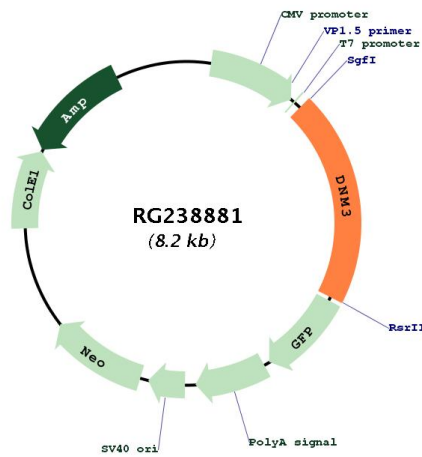
SgfI-RsrII

Cloning Scheme:

Cloning sites used for ORF Shuttling:



Plasmid Map:



ACCN: NM_001278252

ORF Size: 1665 bp

OTI Disclaimer:	The molecular sequence of this clone aligns with the gene accession number as a point of reference only. However, individual transcript sequences of the same gene can differ through naturally occurring variations (e.g. polymorphisms), each with its own valid existence. This clone is substantially in agreement with the reference, but a complete review of all prevailing variants is recommended prior to use. More info
OTI Annotation:	This clone was engineered to express the complete ORF with an expression tag. Expression varies depending on the nature of the gene.
Components:	The ORF clone is ion-exchange column purified and shipped in a 2D barcoded Matrix tube containing 10ug of transfection-ready, dried plasmid DNA (reconstitute with 100 ul of water).
RefSeq:	NM_001278252.2
RefSeq Size:	2354 bp
RefSeq ORF:	1668 bp
Locus ID:	26052
UniProt ID:	Q9UQ16
Cytogenetics:	1q24.3
Protein Pathways:	Endocytosis, Fc gamma R-mediated phagocytosis
MW:	63.3 kDa
Gene Summary:	This gene encodes a member of a family of guanosine triphosphate (GTP)-binding proteins that associate with microtubules and are involved in vesicular transport. The encoded protein functions in the development of megakaryocytes. Alternative splicing results in multiple transcript variants. [provided by RefSeq, May 2013]