

## Product datasheet for **RG238875**

### ZNF92 (NM\_001287532) Human Tagged ORF Clone

#### Product data:

Product Type:	Expression Plasmids
Product Name:	ZNF92 (NM_001287532) Human Tagged ORF Clone
Tag:	TurboGFP
Symbol:	ZNF92
Synonyms:	HEL-203; HPF12; HTF12; TF12
Mammalian Cell Selection:	Neomycin
Vector:	pCMV6-AC-GFP (PS100010)
E. coli Selection:	Ampicillin (100 ug/mL)



[View online »](#)

**ORF Nucleotide Sequence:**

>RG238875 representing NM\_001287532.  
 Blue=ORF Red=Cloning site Green=Tag(s)

```
GCTCGTTTAGTGAACCGTCAGAATTTTGTAAACGACTCACTATAGGGCGGCCGGGAATTCGTGACTG
GATCCGGTACCGAGGAGATCTGCCGCCCGGATCGCC
ATGGGACCCTGACATTTAGGGATGTGAAAATAGAATTCTCTCTAGAGGAATGGCAATGCCTGGACACT
CGCAGCGGAATTTATATAGAGATGTGATTTAGAGAACTACAGAAACCTGGTCTTCCTTGTATGTGT
TCTCATTTTGCCCAAGATGTTTGGCCAGAGCACAGCATAAAAGATTCTTTCCAAAAGTGATACTGAGA
ACATATGGAAAATATGGACATGAGAATTTACAGCTAAGAAAAGACCATAAAAAGTGTGGATGCATGTAAG
GTGTACAAAGGAGGTTATAATGGACTTAACCAAGTGTGGACAACACTGACAGCAAGATATTTCAAGTGT
GATAAATATGTGAAAGTCTTTCATAAATTTCCAAATGTAATAGAAAAGATAAGACATACTGGAAAG
AAACCTTTCAAATGTAAAACCGTGGCAAATCATTTTGCATGCTTTCACAATTAACCAACATAAGAAA
ATTCATACTAGAGAGTATTCTTACAATGTGAAGAATGTGGTAAAGCCTTTAACTGGTCTCAACCCCTT
ACTAAACATAAGATAATTCATACTGGAGAAAAACCTACAATGTGAAGAATGTGGCAAAGCTTTTAAAC
CGGTCTCAAATCTTACTAAACATAAAAATAATTCATACTGGAGAGAAACCTACAATGTGAAGAATGT
GGCAAAGCTTTTAAACCGTCTCAACCCCTTACTAAACATAAAAAGAAATTCATACAGAAAGAGAAACCC
AAATGTGAAGAATGTGGCAAGGCCTTTAACCAAGTCTCGATTCTTAATAACATAAGAGAATTCATATG
GAAGATAAACCCCTACAAATGTGAAGAATGTGGCAAAGCCTTTAGAGTATTCTCAATTCTTAAAAACAT
AAGATAATCCATACTGGGAAAAACCATACAAATGTGAAGAATGTGGCAAAGCCTTTAACCAAGTCTCA
AACCTTACTAAACATAAGATAATTCATACTGGAGAGAAACCCCTACAAATGTGATGAATGTGGCAAAGCC
TTTAAACAGTCTCAACCCCTTACTAAACATAAAAAGAAATTCATACGGGAGAAAAACCCCTACAAATGTGAA
GAATGTGGCAAAGCTTTTAAACAGTCTCAACCCCTTACTGAACATAAGATAATTCATACTGGAGAGAAA
CCCTACAATGTGAAAAATGTGGCAAGGCCTTTAGTGGTCTCAGCTTTTACTAAACATAAGAGAAAT
CATATGGAAAGATAAACCCCTACAAATGTGAAGAATGTGGCAAAGCCTTTAGTGTATTCTCAACCCCTTACT
AAACATAAAAATAATTCATACTAGAGAAAAACCCCTACAAATGTGAAGAATGTGGCAAAGCCTTTAACCCAG
TCCTCAATTTTTACTAAACATAAGATAATTCACACTGAAGGGAAATCCTACAAATGTGAAAAATGTGGC
AATGCTTTTAAACAGTCTCAACCCCTTACTGCACGTAAGATAATTTATACTGGAGAGAAACCCCTACAAA
TATGAAGAATGTGACAAAGCCTTTAACCAAGTCTCAACCCCTTATTACACATCAGATAATTTATACTGGA
GAGAAACCCCTGCAACATGAATGTGGCAGAGCCTTTAACCAATCCTCAAATTATACTAAAGAGAAACTA
CAAACC
ACGCGTACGCGGCCGCTCGAG – GFP Tag – GTTTAAAC
```

**Protein Sequence:**

>Peptide sequence encoded by RG238875  
 Blue=ORF Red=Cloning site Green=Tag(s)

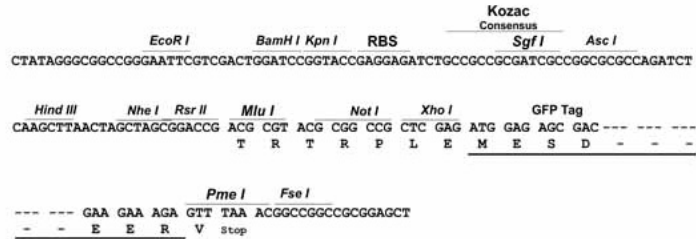
```
MGPLTRFDVKIEFSLLEWQCLDTAQRNL YRDVMLENYRNLVFLVMCSHF AQDVWPEHSIKDSFQKVILR
TYGKYGHENLQLRKDHKSVDACKVYKGGYNGLNQCLTTTDSKIFQCDKYVKVFHKFPNVNRNKIRHTGK
KPFKCKNRGKSF CMLSQLTQHKKIHTREYSYKCEECGKAFNWSSTLTKHKKIHTGEKPYKCEECGKAFN
RSSNLTKHKIHTGEKPYKCEECGKAFNRSSTLTKHKKRIHTEEKPYKCEECGKAFNQFSILNKHKRIMH
EDKPYKCEECGKAFRVFSILKHKIHTGEKPYKCEECGKAFNQFSNLTKHKIHTGEKPYKCEECGKA
FNQSSTLTKHKKRIHTGEKPYKCEECGKAFKQSSTLTKHKIHTGEKPYKCEKCGKAFSWSSAFTKHKR
HMEKPYKCEECGKAFSVFSTLTKHKIHTREKPYKCEECGKAFNQSSIFTKHKKIHTEGKSYKCEKCG
NAFNQSSNL TARKIIYTGKPYKYECDKAFNKFSTLITHQIIYTGKPKHECGRAFKNSSNYTKEKL
QT
TRTRPLEMESDESGLPAMEIECRITGTLNGVEFELVGGEGTPEQGRMTNKMKSTKGALTFSPYLLSHV
MGYGFYHFGTYPSGYENPFLHAINNGGYNTRIEKYEDGGVLHVSFSYRYEAGRVIGDFKVMGTGFPE
SVIFTDKIIIRSNAIVEHLHPMGDNDLDGSTRFSLRDGGYSSVVD SHMHFKSAIHPSILQNGGPMFA
FRRVEEDHSNTELGIVEYQHAFKTPDADAGEERV
```

**Restriction Sites:**

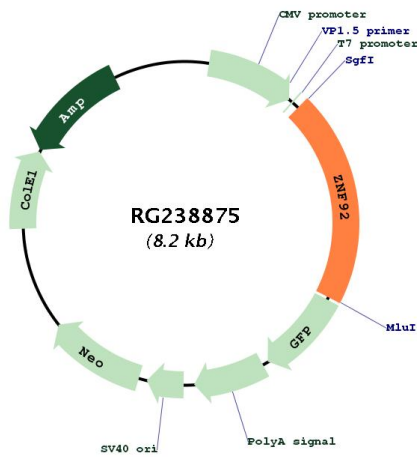
Sgfl-MluI

Cloning Scheme:

Cloning sites used for ORF Shutting:



Plasmid Map:



ACCN: NM\_001287532  
 ORF Size: 1662 bp

<b>OTI Disclaimer:</b>	The molecular sequence of this clone aligns with the gene accession number as a point of reference only. However, individual transcript sequences of the same gene can differ through naturally occurring variations (e.g. polymorphisms), each with its own valid existence. This clone is substantially in agreement with the reference, but a complete review of all prevailing variants is recommended prior to use. <a href="#">More info</a>
<b>OTI Annotation:</b>	This clone was engineered to express the complete ORF with an expression tag. Expression varies depending on the nature of the gene.
<b>Components:</b>	The ORF clone is ion-exchange column purified and shipped in a 2D barcoded Matrix tube containing 10ug of transfection-ready, dried plasmid DNA (reconstitute with 100 ul of water).
<b>RefSeq:</b>	<a href="#">NM_001287532.1</a> , <a href="#">NP_001274461.1</a>
<b>RefSeq Size:</b>	3124 bp
<b>RefSeq ORF:</b>	1665 bp
<b>Locus ID:</b>	168374
<b>UniProt ID:</b>	<a href="#">Q03936</a>
<b>Cytogenetics:</b>	7q11.21
<b>Protein Families:</b>	Transcription Factors
<b>MW:</b>	65.2 kDa
<b>Gene Summary:</b>	May be involved in transcriptional regulation.[UniProtKB/Swiss-Prot Function]