

Product datasheet for **RG238847**

EHD1 (NM_001282445) Human Tagged ORF Clone

Product data:

Product Type:	Expression Plasmids
Product Name:	EHD1 (NM_001282445) Human Tagged ORF Clone
Tag:	TurboGFP
Symbol:	EHD1
Synonyms:	H-PAST; HPAST1; PAST; PAST1
Mammalian Cell Selection:	Neomycin
Vector:	pCMV6-AC-GFP (PS100010)
E. coli Selection:	Ampicillin (100 ug/mL)



[View online »](#)

ORF Nucleotide Sequence:

>RG238847 representing NM_001282445.
 Blue=ORF Red=Cloning site Green=Tag(s)

```
GCTCGTTTAGTGAACCGTCAGAATTTTGTAAACGACTCACTATAGGGCGGCCGGGAATTCGTGACTG
GATCCGGTACCGAGGAGATCTGCCGCCGCGATCGCC
ATGGAACAGCCAGGAACTGCAGCCAGCCCGTGTCCGGCAGTATGTTCAGCTGGGTCAGCAAGGATGCC
CGCCGCAAGAAGGAGCCGGAGCTCTTCCAGACGGTGGCCGAGGGGCTGCGGCAGCTGTACGCGCAGAAG
CTGCTACCCCTGGAGGAGCACTACCGCTTCCACGAGTTCCACTCGCCCGCTGGAGGACGCTGACTTC
GACAACAAGCCTATGGTCTCCTCGTGGGGCAGTACAGCACGGGCAAGACCCTTCATCCGACACCTG
ATCGAGCAGGACTTCCGGGGATGCGCATCGGGCCGAGCCACCACCGACTCCTTCATCGCCGTATG
CACGGCCCACTGAGGGCGTGGTCCGGGCAACGCGCTCGTGGTGGACCCGCGGCCCCCTTCCGCAAG
CTCAACCGCTTTGGCAACGCTTCTCAACAGGTTCATGTGTGCCAGCTGCCAACCCCGTCTGGAC
AGCATCAGCATCATCGACACCCCGGGATCCTGTCTGGAGAGAAGCAGCGGATCAGCAGAGGCTATGAC
TTTGCAGCGTCTCGAGTGGTTCGCGGAGCGTGTGGACCGCATCATCCTGCTTTCGACGCCACAAG
CTGGACATCTCCGATGAGTTCTCGGAAGTGATCAAGGCTCTGAAGAACCATGAGGACAAGATCCGCGTG
GTGCTGAACAAGGAGACCAGATCGAGACGCAGAGCTGATGCGGGTGTACGGGGCCCTCATGTGGTCC
CTGGGCAAGATCATCAACACCCCGAGGTGGTCAGGGTCTACATCGGCTCCTTCGTCCACCCGCTC
CTCATCCCGACAACCGCAAGCTCTTTGAGGCCGAGGAGCAGGACCTCTTCAAGGACATCCAGTCACTG
CCCCGAAACGCCGCCCTCAGGAAGCTCAATGACCTGATCAAGCGGGCACGGCTGGCCAAGGTTACAGCC
TACATCATCAGCTCCCTCAAGAAAGAGATGCCCAATGTCTTTGGTAAAGAGAGCAAAAAGAAAGAGCTG
GTGAACAACCTGGGAGAGATCTACCAGAAGATTGAGCGCGAGCACCAGATCTCCCTGGGACTTCCCG
AGCCTCCGCAAGATGCAGGAACTCCTGCAGACCCAGGACTTCAGCAAGTCCAGGCGCTGAAGCCCAAG
CTGCTGGACACGGTGGATGACATGCTGGCAACGACATCGCGCGGCTGATGGTGATGGTGCCGGAG
GAGTCCCTGATGCCTTCCAGGTGGTCAAGGGCGGCGCCTTTGACGGCACCATGAACGGGCGCTTGGG
CACGGCTACGGCAGGGGGCCGGCGAGGCATCGACGACGTGGAGTGGTGGTGGCAAGGACAAGCCC
ACCTACGACGAGATCTTCTACACGCTGTCCCTGTCAACGGCAAGATCACGGGCGCAACGCCAAGAAG
GAGATGGTGAAGTCAAGCTCCCAACACCGTGTAGGGAAGATCTGGAAGCTGGCCGACGTGGACAAG
GACGGGCTGTGGACGACGAGGAGTTCGCGCTGGCCAACCACCTCATCAAGGTCAAGCTGGAGGGCCAC
GAGCTGCCCGCGACCTGCCCCGACCTGGTGGCCGCTTCAAGCGCAGACATGAG
AGCGGACCGACGCGTACGCGGCCGCTCGAG - GFP Tag - GTTTAAAC
```

Protein Sequence:

>Peptide sequence encoded by RG238847
 Blue=ORF Red=Cloning site Green=Tag(s)

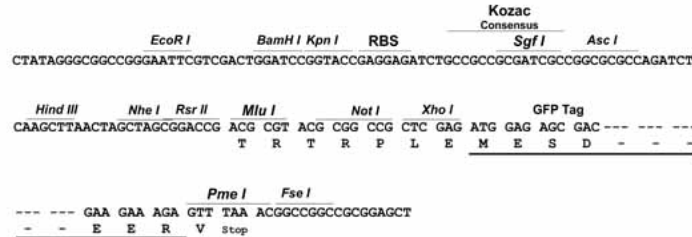
```
MEQPGTAASPVSGSMFSWVSKDARRKKEPELFQTVAEGLRQLYAQKLLPLEEHYRFHEFHSPALEDADF
DNKPMVLLVGQYSTGKTFIRHLIEQDFPGMRIGPEPTDSFIAVMHGPTGVVPGNALVVDPRRPFK
LNAFGNAFLNRFMCAQLPNPVLDSISIIDTPGILSGEKQRISRGYDFAAVLEWFAERVDRIILLFDAHK
LDISDEFSEVIKALKNHEDKIRVVLNKADQIETQQLMRVYGALMWSLGKIINTPEVVRVYIGSFWSHPL
LIPDNRKLFEEEQDLFKDIQSLPRNAALRKLNDLIKRRARLAKVHAYIISLKKEMPVNFVKESKKKEL
VNNLGEIYQKIEREHQISPGDFPSLRMQELLQTQDFSKFQALKPKLLDTVDDMLANDIARLMVMVRQE
ESLMPSQVVKGGAFDGTMNGPFHGHYGEGAGEGIDDVVWVVKDKPTYDEIFYTLSPVNGKITGANAKK
EMVSKLPNTVLGKIWKLADVDKDGLLDDEEFALANHLIKVKLEGHELPADLPPHLVPPSKRRHE
SGPTRTRPLEMESDESGLPAMEIECRITGTLNGVEFELVGGGEGTPEQGRMTNKMSTKGALTFSPYLL
SHVMGYGFYHFGTYPSTYENPFLHAINNGGYTNTRIEKYEDGGVLHVSFSYRYEAGRVIGDFKVMGTGF
PEDSVIFTDKIIRSNATVEHLHPMGDNDLDGSFTRTFSLRDGGYSSVVDSHMHFKSAIHPSILQNGGP
MFAFRRVEEDHSNTELGIVEYQHAFKTPDADAGEERV
```

Restriction Sites:

Sgfl-RsrII

Cloning Scheme:

Cloning sites used for ORF Shuttling:


ACCN: NM_001282445

ORF Size: 1644 bp

OTI Disclaimer: The molecular sequence of this clone aligns with the gene accession number as a point of reference only. However, individual transcript sequences of the same gene can differ through naturally occurring variations (e.g. polymorphisms), each with its own valid existence. This clone is substantially in agreement with the reference, but a complete review of all prevailing variants is recommended prior to use. [More info](#)
OTI Annotation: This clone was engineered to express the complete ORF with an expression tag. Expression varies depending on the nature of the gene.

Components: The ORF clone is ion-exchange column purified and shipped in a 2D barcoded Matrix tube containing 10ug of transfection-ready, dried plasmid DNA (reconstitute with 100 ul of water).

RefSeq: [NM_001282445.1](#), [NP_001269374.1](#)
RefSeq Size: 3354 bp

RefSeq ORF: 1647 bp

Locus ID: 10938

UniProt ID: [Q9H4M9](#)
Cytogenetics: 11q13.1

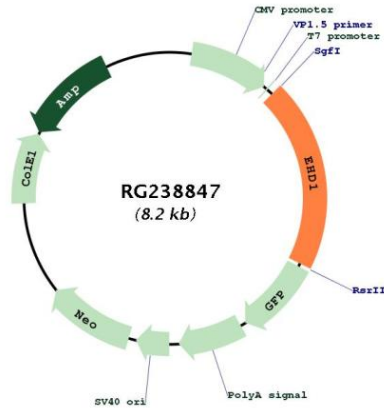
Protein Families: Druggable Genome

Protein Pathways: Endocytosis

MW: 62.4 kDa

Gene Summary:

This gene belongs to a highly conserved gene family encoding EPS15 homology (EH) domain-containing proteins. The protein-binding EH domain was first noted in EPS15, a substrate for the epidermal growth factor receptor. The EH domain has been shown to be an important motif in proteins involved in protein-protein interactions and in intracellular sorting. The protein encoded by this gene is thought to play a role in the endocytosis of IGF1 receptors. Alternatively spliced transcript variants have been found for this gene. [provided by RefSeq, Sep 2013]

Product images:


Circular map for RG238847