

## Product datasheet for **RG238837**

### **IRX4 (NM\_001278635) Human Tagged ORF Clone**

#### **Product data:**

Product Type:	Expression Plasmids
Product Name:	IRX4 (NM_001278635) Human Tagged ORF Clone
Tag:	TurboGFP
Symbol:	IRX4
Synonyms:	IRXA3
Mammalian Cell Selection:	Neomycin
Vector:	pCMV6-AC-GFP (PS100010)
E. coli Selection:	Ampicillin (100 ug/mL)



[View online »](#)

**ORF Nucleotide Sequence:**

>RG238837 representing NM\_001278635.  
 Blue=ORF Red=Cloning site Green=Tag(s)

```

GCTCGTTAGTGAACCGTCAGAATTTTGTAAACGACTCACTATAGGGCGGCCGGGAATTCGTGACTG
GATCCGGTACCGAGGAGATCTGCCGCCCGCATCGCC
ATGTCTACCCGCAGTTTGGATACCCCTACTCCTCGGCTCCCCAGTTCTTATGATGGCCACCAACTCCCTG
AGCACGTGCTGCGAGTCCGGAGCCGCACGCTGGCGGACTCCGGGCCCGCCGCTCGGCCAGGCGCCG
GTCTACTGCCCGGTCTACGAGAGCCGGCTGCTGGCCACCGCGCGCCACGAGCTCAACTCGGCCGCGCG
CTGGGCGTCTATGGGGTCCCTATGGCGGATCGCAGGGCTATGGCAACTACGTGACCTACGGCTCGGAG
GCGTCCGCTTCTACTCGCTGAACAGCTTTGATTCCAAGGATGGTTCGGGATCTGCGCATGGGGGCTG
GCACCAGCCGCTGCCCTACTACCTTACGAGCCAGCTCTGGCCAGTACCCCTATGACAGGATCAAA
CGGCTAGGCGGTATCCCATAAAGGAATTGGCTGGACCTCTCTGGCTTGGGAAGGAGCCAGGCTCC
CTGTATGGAACCATGGACAGCGGCACGCGCGCAAGAACGCCACGCGGAGACCACCAGCAGCTCAAG
GCCTGGCTGCAGGAGCACCGCAAGAACCCTACCCACCAAGGGGAGAAGATCATGCTGGCCATCATC
ACCAAGATGACCCTCACACAGGTCTCCACTGGTTCGCCAACGCGCGCCGCGCCTCAAGAAGGAGAAC
AAGATGACGTGGCCGCCGGAACAAGTGCAGACGAGAAGCGCCCTACGCGGAGGGCGAGGAGGAG
GAGGGGGCGAGGAGGAGGCGCGGGAGGAGCCCTCAAGAGCTCCAAGAACGCAGAGCCCGTGGGAAA
GAGGAGAAGGAGCTGGAGCTTAGTGACTTGGACGACTTCGACCCGCTGGAAGCAGAGCCCGCGGCTG
GAGCTGAAGCCGCCCTTCCACTCCCTGGACGGCGGTCTGGAGCGGCTCCCGCCGCGCCGACGCCCCG
GTCAAGGAGGCCCTCAGGCGCGTCCGGATGTCTCTGGCCGCGGTGGCGGAGTGTCTGGACGAGGAC
CTGGAGAGGGCCCGAGCTGTCTCCGACGCGCGCGCGGGCCGGAGCCACTGCCGGCGCAGAGGGC
GGCCCTCAGTCTGCGAGGCCAAGCTGGGTTTGTGCCGGCGGGGCGTGGCAGGCTGGAGGCTAAG
CCGCGCATCTGGTCCCTGGCCACACAGCCACCGCCCGCCGCGCCGCGCCACCTCCCTGAGCCAGAT
GAGTTTCCGTCGTGCATGCTCAAGCGCAAGTCCCGCGGCCCTGCGGCTGTGTCTCCGCGCCCGCC
ACGTCCCGTCTGTGGCCCTTCCCACTCTGGCGCCCTGGACAGGACACAGGACTCCCGGTAACCACT
CTCAGAACTGGGTGGACGGGTCTTCCACGACCCATCCTCAGGCACAGCACTTGAACCAGGCTGG
GCCACCGCAAGGGCGCCCTCCTGGACCCCGGCTCTGGGACGCTCGTGGGGCGGGCGCAACGTG
CTGACTGCACCCCTGGCCCGCCTTCCGCTGCCGTGCCCCAGGACGCCCCAGCTGCAGGCGCCGCC
AGGAGCTGCTCGCCCTGCCAAGGCCGGCGCAAAACCCTTCTGCGCC
ACCGGTACGCGGCCGCTCGAG – GFP Tag – GTTTAAAC
  
```

**Protein Sequence:**

>Peptide sequence encoded by RG238837  
 Blue=ORF Red=Cloning site Green=Tag(s)

```

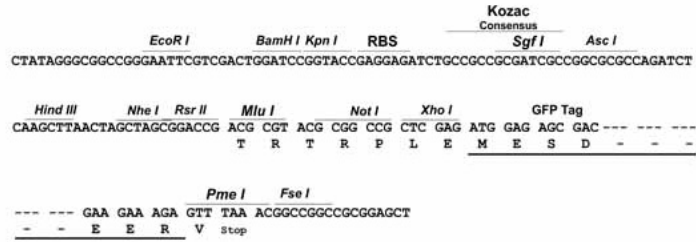
MSYPQFGYPYSSAPQFLMATNSLSTCCESGRTLADSGPAASAQAPVYCPVYESRLLATARHELNSAAA
LGVYGGPYGGSQYGNVYTYGSEASAFYSLNSFDSKDGSGSAHGLAPAAAAAYPYEPALGQYPYDRIK
RLGGHPHKGIGLDL SGLGRSPGSLYGTMDSGTRRKNATRETTSTLKAWLQEHKKNPYPTKGEKIMLAI
TKMTLTQVSTWFANARRRLKKNKMTWPPRNKCADEKRPYAEGEEEEGGEEEEAREEPLKSSKNAEPVKG
EEKELELSDLDDFDPLEAEPACELKPPFHSLDGLERVPAAPDGPVKEASGALRMSLAAGGGAALDED
LERARSCLRSAAAGPEPLPGAEGGPQVCEAKLGFVPAGASAGLEAKPRIWLAHTATAAAAAATSLSQT
EFPSCMLKRQGAAPAAYSSAPATSPSVALPHSGALDRHQDSPVTLRNWVDGVFHDPILRHSTLNQAW
ATAKALLDPGPLGRSLGAGANVLTAPLARAFAVPAVQDAPAAGAARELLALPKAGGKPFCA
TRTRPLEMESDESGLPAMEIECRITGTLNGVEFELVGGEGTPEQGRMTNKMSTKGALTFSPYLLSHV
MGYGFYHFGTYPSGYENPFLHAINNGGYNTRIEKYEDGGVLHVSFSYRYEAGRVIGDFKVMGTGFPED
SVIFTDKIIRSNATVEHLHPMGDNDLDGSFTRTFLRDGGYSSVVD SHMHFKSAIHPSILQNGGPMFA
FRRVEEDHSNTELGIVEYQHAFKTPDADAGEERV
  
```

**Restriction Sites:**

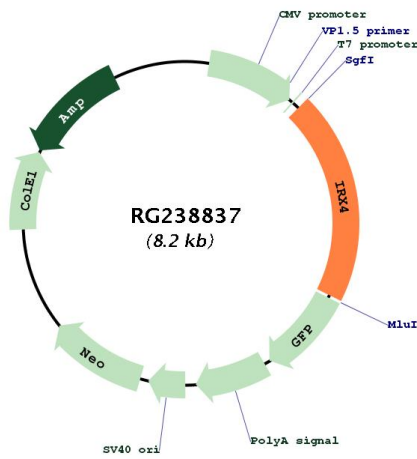
Sgfl-MluI

Cloning Scheme:

Cloning sites used for ORF Shutting:



Plasmid Map:



<b>ACCN:</b>	NM_001278635
<b>ORF Size:</b>	1635 bp
<b>OTI Disclaimer:</b>	The molecular sequence of this clone aligns with the gene accession number as a point of reference only. However, individual transcript sequences of the same gene can differ through naturally occurring variations (e.g. polymorphisms), each with its own valid existence. This clone is substantially in agreement with the reference, but a complete review of all prevailing variants is recommended prior to use. <a href="#">More info</a>
<b>OTI Annotation:</b>	This clone was engineered to express the complete ORF with an expression tag. Expression varies depending on the nature of the gene.
<b>Components:</b>	The ORF clone is ion-exchange column purified and shipped in a 2D barcoded Matrix tube containing 10ug of transfection-ready, dried plasmid DNA (reconstitute with 100 ul of water).
<b>RefSeq:</b>	<a href="#">NM_001278635.1</a> , <a href="#">NP_001265564.1</a>
<b>RefSeq Size:</b>	2411 bp
<b>RefSeq ORF:</b>	1638 bp
<b>Locus ID:</b>	50805
<b>UniProt ID:</b>	<a href="#">P78413</a>
<b>Cytogenetics:</b>	5p15.33
<b>MW:</b>	57.5 kDa
<b>Gene Summary:</b>	Likely to be an important mediator of ventricular differentiation during cardiac development. [UniProtKB/Swiss-Prot Function]